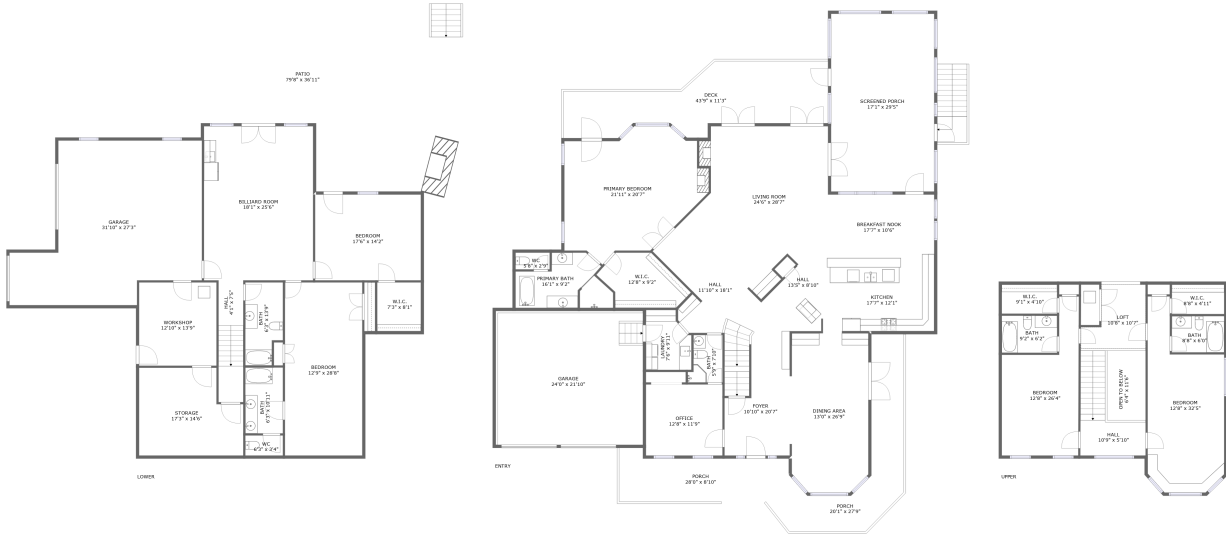


318 Egret Drive, Union Hall, Franklin County, Virginia, United States, 24176



Property Summary

2 garages

5 bedrooms

6 bathrooms

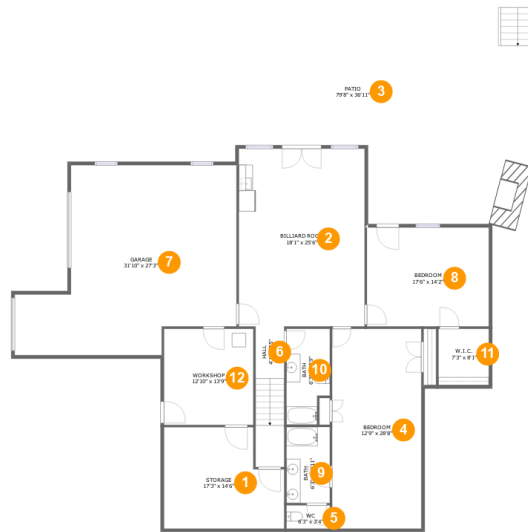
0 half baths

3 floors

5,674 Gross Living Area sqft

10,221 total sqft

318 Egret Drive, Union Hall, Franklin County, Virginia, United States, 24176



Room Dimensions

Floor 1

Total sqft: 4311

Living area: 1769

#	Room name	Dimensions	Area (sqft)	Counted as Living Area
1	Storage	17'3" x 14'6"	224 sq. ft	Yes
2	Billiard Room	18'1" x 25'6"	460 sq. ft	Yes
3	Patio	79'8" x 36'11"	1643 sq. ft	No
4	Bedroom	12'9" x 28'8"	366 sq. ft	Yes
5	Wc	6'3" x 3'4"	21 sq. ft	Yes
6	Hall	4'1" x 7'5"	83 sq. ft	Yes
7	Garage	31'10" x 27'3"	673 sq. ft	No
8	Bedroom	17'6" x 14'2"	248 sq. ft	Yes
9	Bath	6'3" x 10'11"	68 sq. ft	Yes
10	Bath	6'3" x 13'9"	78 sq. ft	Yes
11	W.i.c.	7'3" x 8'1"	58 sq. ft	Yes

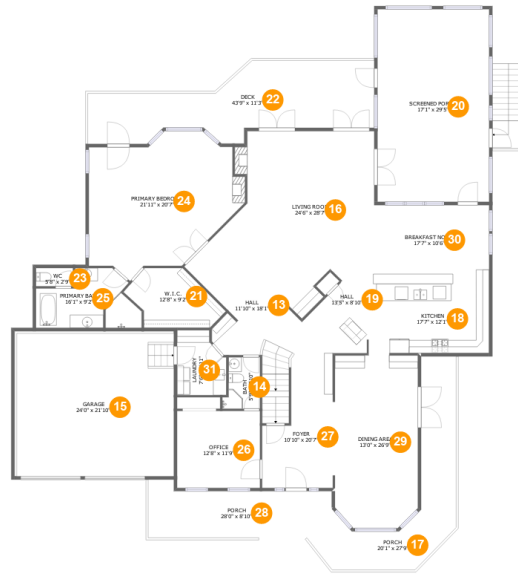
Scan captured on Wed, 28 Aug 2024 20:45:42 GMT

Information is calculated by CubiCasa technology; deemed highly reliable but not guaranteed.

**318 Egret Drive, Union Hall, Franklin County,
Virginia, United States, 24176**

#	Room name	Dimensions	Area (sqft)	Counted as Living Area
12	Workshop	12'10" x 13'9"	176 sq. ft	No

318 Egret Drive, Union Hall, Franklin County, Virginia, United States, 24176



Room Dimensions

Floor 2

Total sqft: 4744

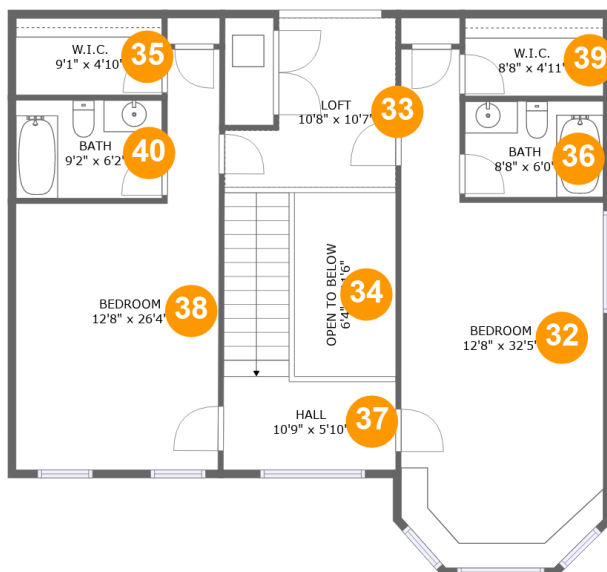
Living area: 2812

#	Room name	Dimensions	Area (sqft)	Counted as Living Area
13	Hall	11'10" x 18'1"	151 sq. ft	Yes
14	Bath	5'9" x 7'10"	39 sq. ft	Yes
15	Garage	24'0" x 21'10"	539 sq. ft	No
16	Living Room	24'6" x 28'7"	515 sq. ft	Yes
17	Porch	20'1" x 27'9"	266 sq. ft	No
18	Kitchen	17'7" x 12'1"	212 sq. ft	Yes
19	Hall	13'5" x 8'10"	163 sq. ft	Yes
20	Screened Porch	17'1" x 29'5"	501 sq. ft	No
21	W.i.c.	12'8" x 9'2"	100 sq. ft	Yes
22	Deck	43'9" x 11'3"	374 sq. ft	No
23	Wc	5'8" x 2'9"	16 sq. ft	Yes

**318 Egret Drive, Union Hall, Franklin County,
Virginia, United States, 24176**

#	Room name	Dimensions	Area (sqft)	Counted as Living Area
24	Primary Bedroom	21'11" x 20'7"	403 sq. ft	Yes
25	Primary Bath	16'1" x 9'2"	112 sq. ft	Yes
26	Office	12'8" x 11'9"	149 sq. ft	Yes
27	Foyer	10'10" x 20'7"	173 sq. ft	Yes
28	Porch	28'0" x 8'10"	198 sq. ft	No
29	Dining Area	13'0" x 26'9"	334 sq. ft	Yes
30	Breakfast Nook	17'7" x 10'6"	185 sq. ft	Yes
31	Laundry	7'6" x 9'11"	66 sq. ft	Yes

318 Egret Drive, Union Hall, Franklin County, Virginia, United States, 24176



Room Dimensions

Floor 3

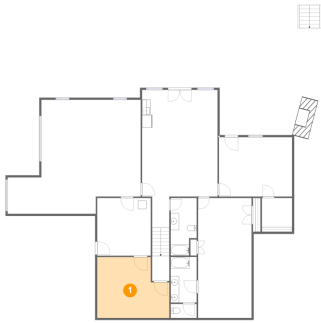
Total sqft: 1166

Living area: 1093

#	Room name	Dimensions	Area (sqft)	Counted as Living Area
32	Bedroom	12'8" x 32'5"	316 sq. ft	Yes
33	Loft	10'8" x 10'7"	90 sq. ft	Yes
34	Open To Below	6'4" x 11'6"	73 sq. ft	No
35	W.i.c.	9'1" x 4'10"	44 sq. ft	Yes
36	Bath	8'8" x 6'0"	52 sq. ft	Yes
37	Hall	10'9" x 5'10"	108 sq. ft	Yes
38	Bedroom	12'8" x 26'4"	243 sq. ft	Yes
39	W.i.c.	8'8" x 4'11"	42 sq. ft	Yes
40	Bath	9'2" x 6'2"	56 sq. ft	Yes

318 Egret Drive, Union Hall, Franklin County, Virginia, United States, 24176

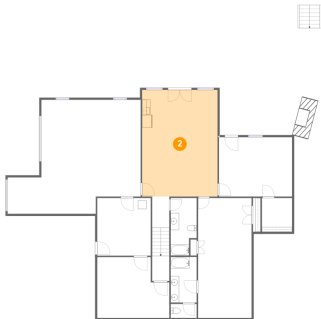
1 Floor 1 - Storage



Dimensions: 17'3" x 14'6"
Area: 224 sq. ft
Counted as Living Area:
Yes

Heated: Yes
Finished: Yes
Enclosed: Yes
Contiguous:
Yes
Permitted: Yes
Wet Space: No
Addition: No
Conversion: No

2 Floor 1 - Billiard Room

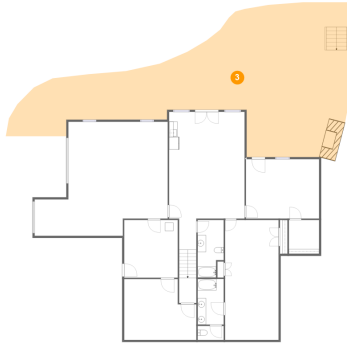


Dimensions: 18'1" x 25'6"
Area: 460 sq. ft
Counted as Living Area:
Yes

Heated: Yes
Finished: Yes
Enclosed: Yes
Contiguous:
Yes
Permitted: Yes
Wet Space: No
Addition: No
Conversion: No

318 Egret Drive, Union Hall, Franklin County, Virginia, United States, 24176

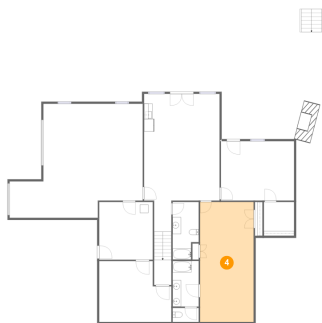
3 Floor 1 - Patio



Dimensions: 79'8" x 36'11"
Area: 1643 sq. ft
Counted as Living Area: No

Heated: No
Finished: Yes
Enclosed: No
Contiguous: Yes
Permitted: Yes
Wet Space: No
Addition: No
Conversion: No

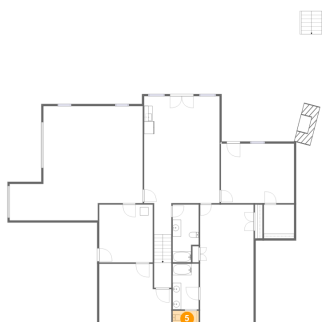
4 Floor 1 - Bedroom



Dimensions: 12'9" x 28'8"
Area: 366 sq. ft
Counted as Living Area:
Yes

Heated: Yes
Finished: Yes
Enclosed: Yes
Contiguous:
Yes
Permitted: Yes
Wet Space: No
Addition: No
Conversion: No

5 Floor 1 - Wc

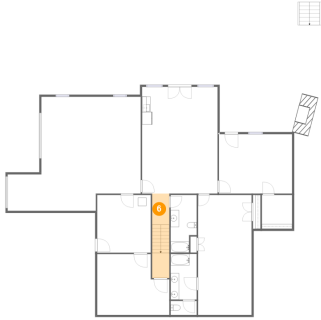


Dimensions: 6'3" x 3'4"
Area: 21 sq. ft
Counted as Living Area:
Yes

Heated: Yes
Finished: Yes
Enclosed: Yes
Contiguous:
Yes
Permitted: Yes
Wet Space: Yes
Addition: No
Conversion: No

318 Egret Drive, Union Hall, Franklin County, Virginia, United States, 24176

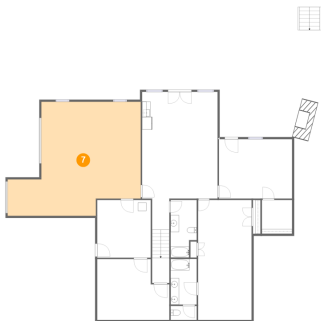
6 Floor 1 - Hall



Dimensions: 4'1" x 7'5"
Area: 83 sq. ft
Counted as Living Area:
Yes

Heated: Yes
Finished: Yes
Enclosed: Yes
Contiguous:
Yes
Permitted: Yes
Wet Space: No
Addition: No
Conversion: No

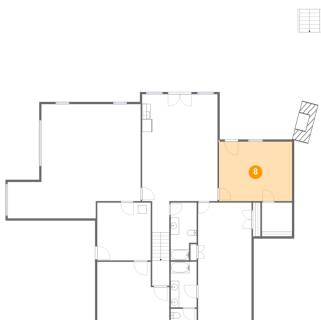
7 Floor 1 - Garage



Dimensions: 31'10" x 27'3"
Area: 673 sq. ft
Counted as Living Area: No

Heated: No
Finished: No
Enclosed: Yes
Contiguous: Yes
Permitted: Yes
Wet Space: No
Addition: No
Conversion: No

8 Floor 1 - Bedroom

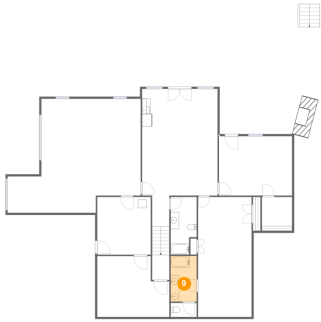


Dimensions: 17'6" x 14'2"
Area: 248 sq. ft
Counted as Living Area:
Yes

Heated: Yes
Finished: Yes
Enclosed: Yes
Contiguous:
Yes
Permitted: Yes
Wet Space: No
Addition: No
Conversion: No

318 Egret Drive, Union Hall, Franklin County, Virginia, United States, 24176

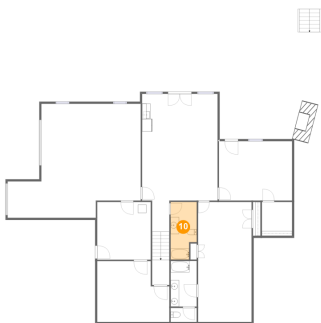
9 Floor 1 - Bath



Dimensions: 6'3" x 10'11"
Area: 68 sq. ft
Counted as Living Area:
Yes

Heated: Yes
Finished: Yes
Enclosed: Yes
Contiguous:
Yes
Permitted: Yes
Wet Space: Yes
Addition: No
Conversion: No

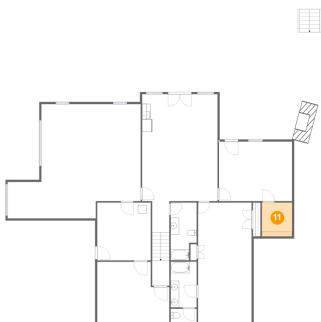
10 Floor 1 - Bath



Dimensions: 6'3" x 13'9"
Area: 78 sq. ft
Counted as Living Area:
Yes

Heated: Yes
Finished: Yes
Enclosed: Yes
Contiguous:
Yes
Permitted: Yes
Wet Space: Yes
Addition: No
Conversion: No

11 Floor 1 - W.i.c.

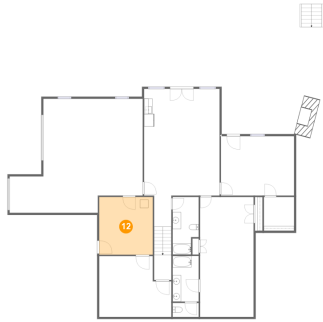


Dimensions: 7'3" x 8'1"
Area: 58 sq. ft
Counted as Living Area:
Yes

Heated: Yes
Finished: Yes
Enclosed: Yes
Contiguous:
Yes
Permitted: Yes
Wet Space: No
Addition: No
Conversion: No

318 Egret Drive, Union Hall, Franklin County, Virginia, United States, 24176

12 Floor 1 - Workshop



Dimensions: 12'10" x 13'9"
Area: 176 sq. ft
Counted as Living Area: No

Heated: Yes
Finished: Yes
Enclosed: Yes
Contiguous: No
Permitted: Yes
Wet Space: No
Addition: No
Conversion: No

13 Floor 2 - Hall



Dimensions: 11'10" x 18'1"
Area: 151 sq. ft
Counted as Living Area:
Yes

Heated: Yes
Finished: Yes
Enclosed: Yes
Contiguous:
Yes
Permitted: Yes
Wet Space: No
Addition: No
Conversion: No

14 Floor 2 - Bath



Dimensions: 5'9" x 7'10"
Area: 39 sq. ft
Counted as Living Area:
Yes

Heated: Yes
Finished: Yes
Enclosed: Yes
Contiguous:
Yes
Permitted: Yes
Wet Space: Yes
Addition: No
Conversion: No

318 Egret Drive, Union Hall, Franklin County, Virginia, United States, 24176

15 Floor 2 - Garage



Dimensions: 24'0" x 21'10"
Area: 539 sq. ft
Counted as Living Area: No

Heated: No
Finished: No
Enclosed: Yes
Contiguous: Yes
Permitted: Yes
Wet Space: No
Addition: No
Conversion: No

16 Floor 2 - Living Room



Dimensions: 24'6" x 28'7"
Area: 515 sq. ft
Counted as Living Area:
Yes

Heated: Yes
Finished: Yes
Enclosed: Yes
Contiguous:
Yes
Permitted: Yes
Wet Space: No
Addition: No
Conversion: No

17 Floor 2 - Porch



Dimensions: 20'1" x 27'9"
Area: 266 sq. ft
Counted as Living Area: No

Heated: No
Finished: Yes
Enclosed: No
Contiguous: No
Permitted: Yes
Wet Space: No
Addition: No
Conversion: No

318 Egret Drive, Union Hall, Franklin County, Virginia, United States, 24176

18 Floor 2 - Kitchen



Dimensions: 17'7" x 12'1"
Area: 212 sq. ft
Counted as Living Area:
Yes

Heated: Yes
Finished: Yes
Enclosed: Yes
Contiguous:
Yes
Permitted: Yes
Wet Space: No
Addition: No
Conversion: No

19 Floor 2 - Hall



Dimensions: 13'5" x 8'10"
Area: 163 sq. ft
Counted as Living Area:
Yes

Heated: Yes
Finished: Yes
Enclosed: Yes
Contiguous:
Yes
Permitted: Yes
Wet Space: No
Addition: No
Conversion: No

20 Floor 2 - Screened Porch



Dimensions: 17'1" x 29'5"
Area: 501 sq. ft
Counted as Living Area: No

Heated: No
Finished: Yes
Enclosed: No
Contiguous: Yes
Permitted: Yes
Wet Space: No
Addition: No
Conversion: No

318 Egret Drive, Union Hall, Franklin County, Virginia, United States, 24176

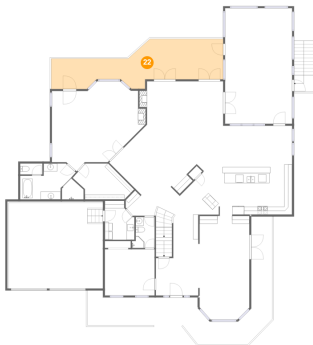
21 Floor 2 - W.i.c.



Dimensions: 12'8" x 9'2"
Area: 100 sq. ft
Counted as Living Area:
Yes

Heated: Yes
Finished: Yes
Enclosed: Yes
Contiguous:
Yes
Permitted: Yes
Wet Space: No
Addition: No
Conversion: No

22 Floor 2 - Deck



Dimensions: 43'9" x 11'3"
Area: 374 sq. ft
Counted as Living Area: No

Heated: No
Finished: Yes
Enclosed: No
Contiguous: No
Permitted: Yes
Wet Space: No
Addition: No
Conversion: No

23 Floor 2 - Wc

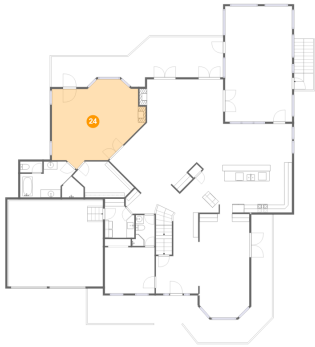


Dimensions: 5'8" x 2'9"
Area: 16 sq. ft
Counted as Living Area:
Yes

Heated: Yes
Finished: Yes
Enclosed: Yes
Contiguous:
Yes
Permitted: Yes
Wet Space: Yes
Addition: No
Conversion: No

318 Egret Drive, Union Hall, Franklin County, Virginia, United States, 24176

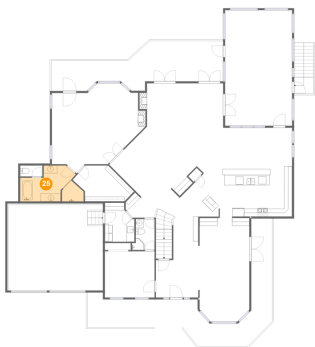
24 Floor 2 - Primary Bedroom



Dimensions: 21'11" x 20'7"
Area: 403 sq. ft
Counted as Living Area:
Yes

Heated: Yes
Finished: Yes
Enclosed: Yes
Contiguous:
Yes
Permitted: Yes
Wet Space: No
Addition: No
Conversion: No

25 Floor 2 - Primary Bath



Dimensions: 16'1" x 9'2"
Area: 112 sq. ft
Counted as Living Area:
Yes

Heated: Yes
Finished: Yes
Enclosed: Yes
Contiguous:
Yes
Permitted: Yes
Wet Space: Yes
Addition: No
Conversion: No

26 Floor 2 - Office



Dimensions: 12'8" x 11'9"
Area: 149 sq. ft
Counted as Living Area:
Yes

Heated: Yes
Finished: Yes
Enclosed: Yes
Contiguous:
Yes
Permitted: Yes
Wet Space: No
Addition: No
Conversion: No

318 Egret Drive, Union Hall, Franklin County, Virginia, United States, 24176

27 Floor 2 - Foyer



Dimensions: 10'10" x 20'7"
Area: 173 sq. ft
Counted as Living Area:
Yes

Heated: Yes
Finished: Yes
Enclosed: Yes
Contiguous:
Yes
Permitted: Yes
Wet Space: No
Addition: No
Conversion: No

28 Floor 2 - Porch



Dimensions: 28'0" x 8'10"
Area: 198 sq. ft
Counted as Living Area: No

Heated: No
Finished: Yes
Enclosed: No
Contiguous: Yes
Permitted: Yes
Wet Space: No
Addition: No
Conversion: No

29 Floor 2 - Dining Area



Dimensions: 13'0" x 26'9"
Area: 334 sq. ft
Counted as Living Area:
Yes

Heated: Yes
Finished: Yes
Enclosed: Yes
Contiguous:
Yes
Permitted: Yes
Wet Space: No
Addition: No
Conversion: No

318 Egret Drive, Union Hall, Franklin County, Virginia, United States, 24176

30 Floor 2 - Breakfast Nook



Dimensions: 17'7" x 10'6"
Area: 185 sq. ft
Counted as Living Area:
Yes

Heated: Yes
Finished: Yes
Enclosed: Yes
Contiguous:
Yes
Permitted: Yes
Wet Space: No
Addition: No
Conversion: No

31 Floor 2 - Laundry



Dimensions: 7'6" x 9'11"
Area: 66 sq. ft
Counted as Living Area:
Yes

Heated: Yes
Finished: Yes
Enclosed: Yes
Contiguous:
Yes
Permitted: Yes
Wet Space: No
Addition: No
Conversion: No

32 Floor 3 - Bedroom

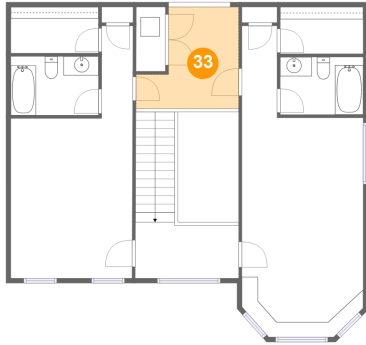


Dimensions: 12'8" x 32'5"
Area: 316 sq. ft
Counted as Living Area:
Yes

Heated: Yes
Finished: Yes
Enclosed: Yes
Contiguous:
Yes
Permitted: Yes
Wet Space: No
Addition: No
Conversion: No

318 Egret Drive, Union Hall, Franklin County, Virginia, United States, 24176

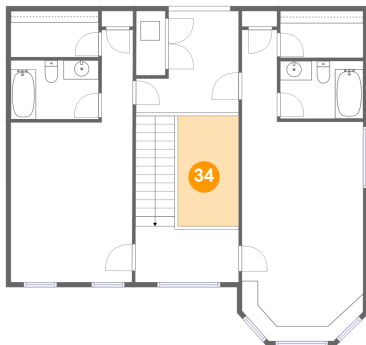
33 Floor 3 - Loft



Dimensions: 10'8" x 10'7"
Area: 90 sq. ft
Counted as Living Area:
Yes

Heated: Yes
Finished: Yes
Enclosed: Yes
Contiguous:
Yes
Permitted: Yes
Wet Space: No
Addition: No
Conversion: No

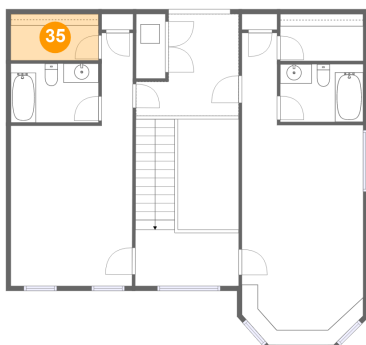
34 Floor 3 - Open To Below



Dimensions: 6'4" x 11'6"
Area: 73 sq. ft
Counted as Living Area: No

Heated: No
Finished: No
Enclosed: No
Contiguous: Yes
Permitted: No
Wet Space: No
Addition: No
Conversion: No

35 Floor 3 - W.i.c.

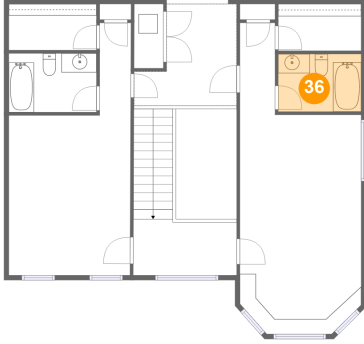


Dimensions: 9'1" x 4'10"
Area: 44 sq. ft
Counted as Living Area:
Yes

Heated: Yes
Finished: Yes
Enclosed: Yes
Contiguous:
Yes
Permitted: Yes
Wet Space: No
Addition: No
Conversion: No

**318 Egret Drive, Union Hall, Franklin County,
Virginia, United States, 24176**

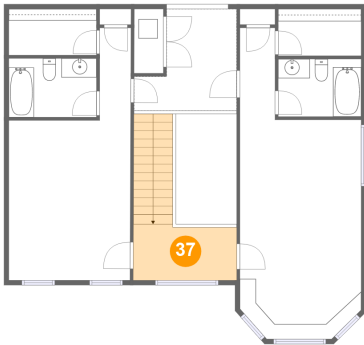
36 Floor 3 - Bath



Dimensions: 8'8" x 6'0"
Area: 52 sq. ft
Counted as Living Area:
Yes

Heated: Yes
Finished: Yes
Enclosed: Yes
Contiguous:
Yes
Permitted: Yes
Wet Space: Yes
Addition: No
Conversion: No

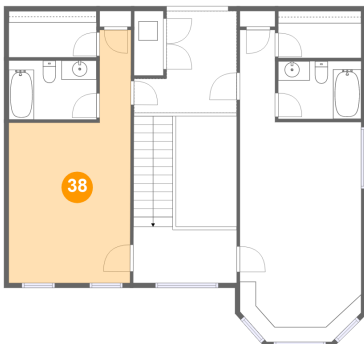
37 Floor 3 - Hall



Dimensions: 10'9" x 5'10"
Area: 108 sq. ft
Counted as Living Area:
Yes

Heated: Yes
Finished: Yes
Enclosed: Yes
Contiguous:
Yes
Permitted: Yes
Wet Space: No
Addition: No
Conversion: No

38 Floor 3 - Bedroom

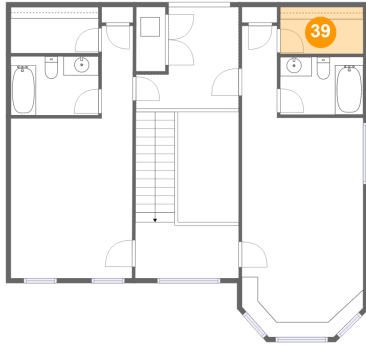


Dimensions: 12'8" x 26'4"
Area: 243 sq. ft
Counted as Living Area:
Yes

Heated: Yes
Finished: Yes
Enclosed: Yes
Contiguous:
Yes
Permitted: Yes
Wet Space: No
Addition: No
Conversion: No

**318 Egret Drive, Union Hall, Franklin County,
Virginia, United States, 24176**

39 Floor 3 - W.i.c.



Dimensions: 8'8" x 4'11"
Area: 42 sq. ft
Counted as Living Area:
Yes

Heated: Yes
Finished: Yes
Enclosed: Yes
Contiguous:
Yes
Permitted: Yes
Wet Space: No
Addition: No
Conversion: No

40 Floor 3 - Bath



Dimensions: 9'2" x 6'2"
Area: 56 sq. ft
Counted as Living Area:
Yes

Heated: Yes
Finished: Yes
Enclosed: Yes
Contiguous:
Yes
Permitted: Yes
Wet Space: Yes
Addition: No
Conversion: No