

BASEMENT
24'7" x 27'9"

ELECTRICAL ROOM
3'5" x 8'10"

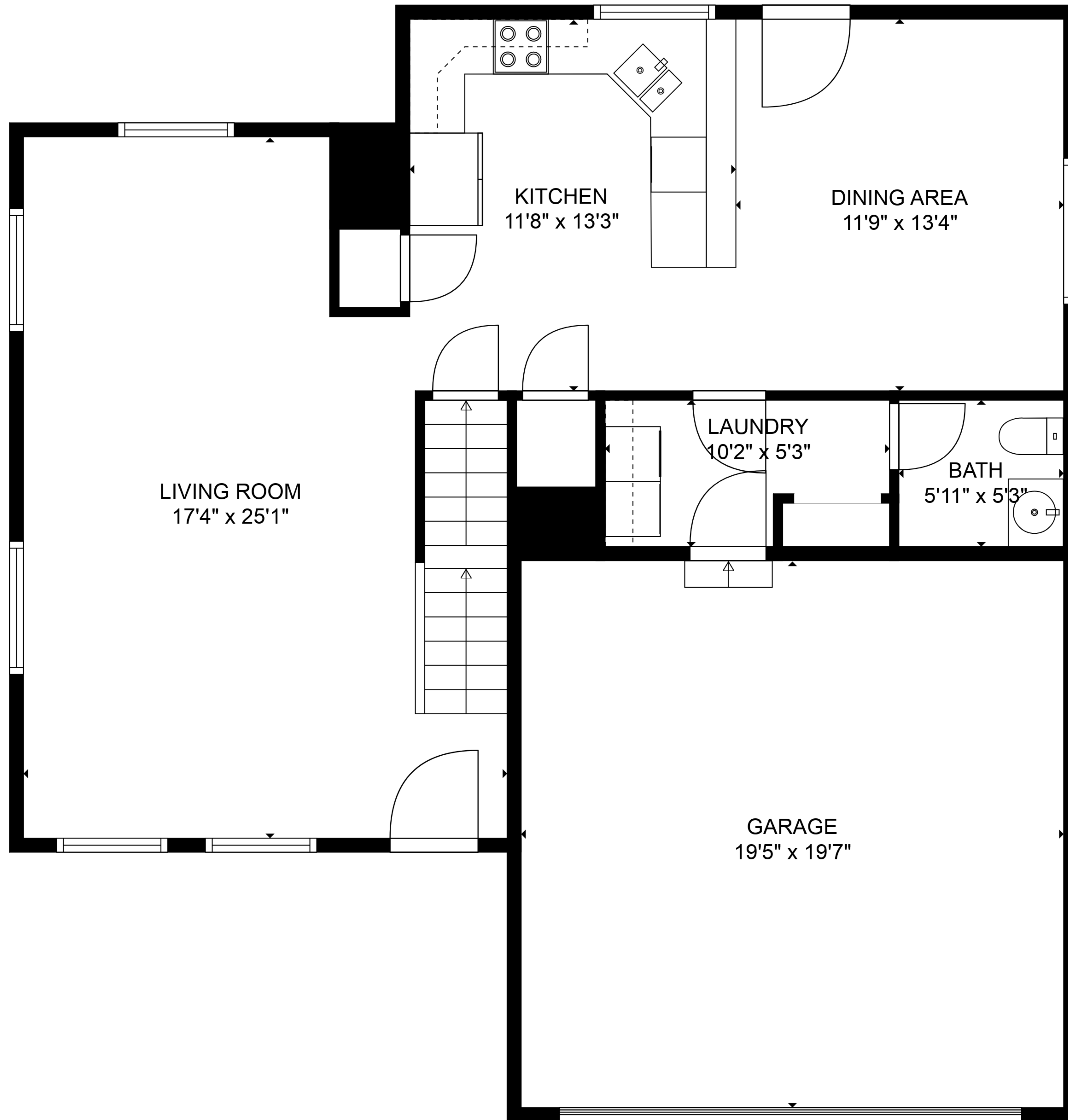
BEDROOM
10'9" x 12'7"

BATH
10'9" x 4'10"

TOTAL: 2224 sq. ft

BELOW GROUND: 714 sq. ft, FLOOR 2: 827 sq. ft, FLOOR 3: 683 sq. ft
EXCLUDED AREAS: ELECTRICAL ROOM: 31 sq. ft, GARAGE: 380 sq. ft, OPEN TO BELOW: 233 sq. ft

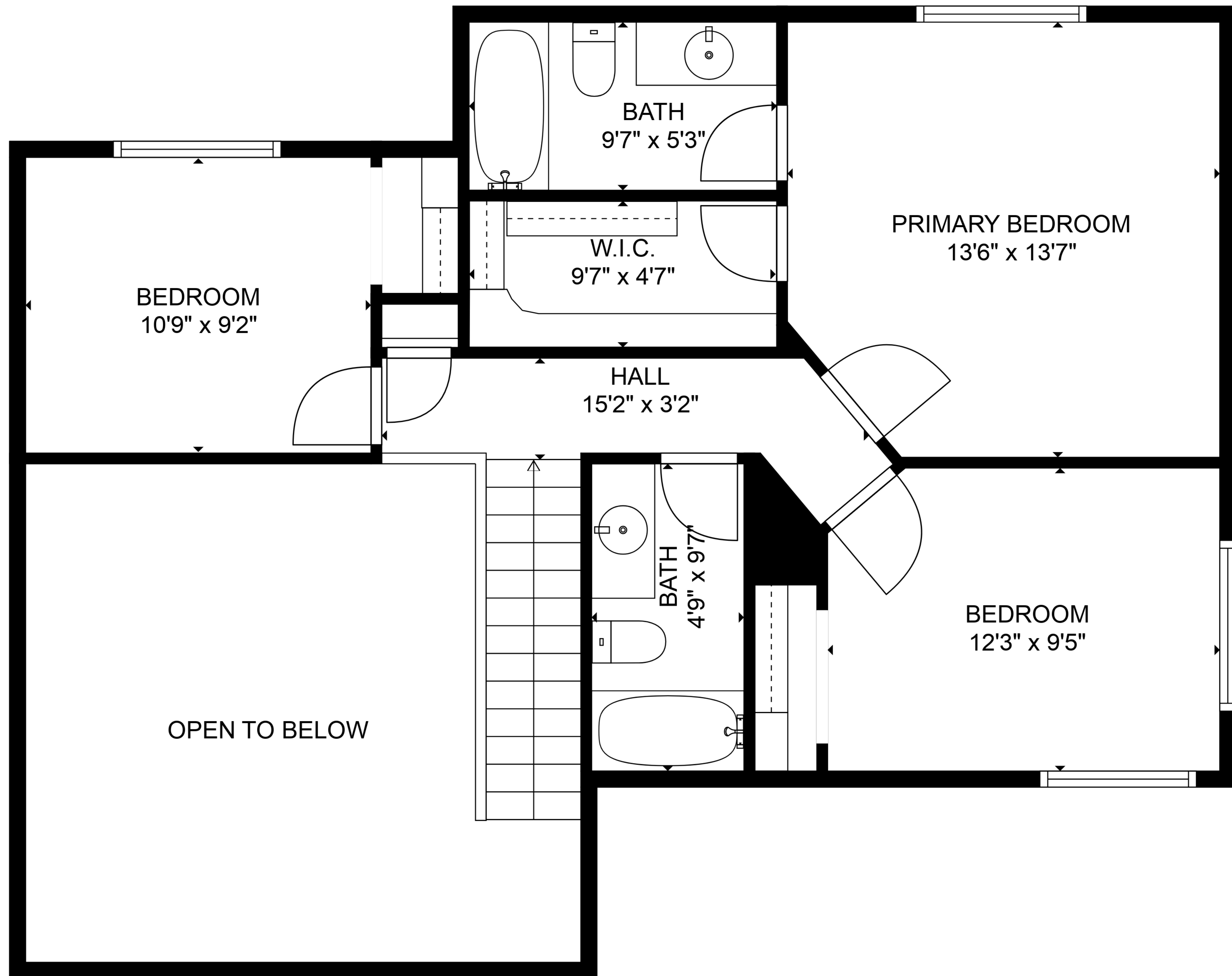
SIZES AND DIMENSIONS ARE APPROXIMATE, ACTUAL MAY VARY.



TOTAL: 2224 sq. ft

BELOW GROUND: 714 sq. ft, FLOOR 2: 827 sq. ft, FLOOR 3: 683 sq. ft
EXCLUDED AREAS: ELECTRICAL ROOM: 31 sq. ft, GARAGE: 380 sq. ft, OPEN TO BELOW: 233 sq. ft

SIZES AND DIMENSIONS ARE APPROXIMATE, ACTUAL MAY VARY.

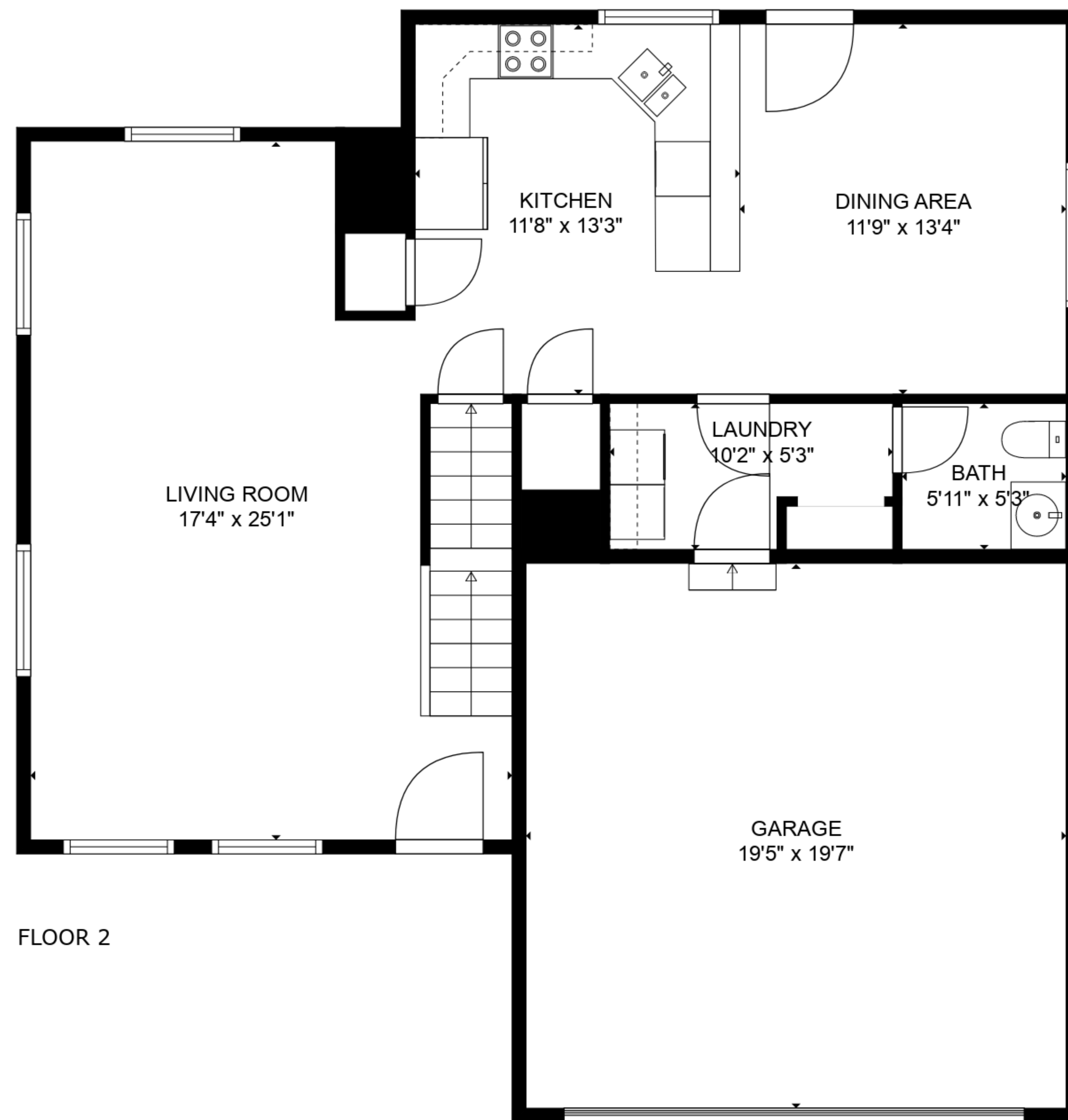


TOTAL: 2224 sq. ft

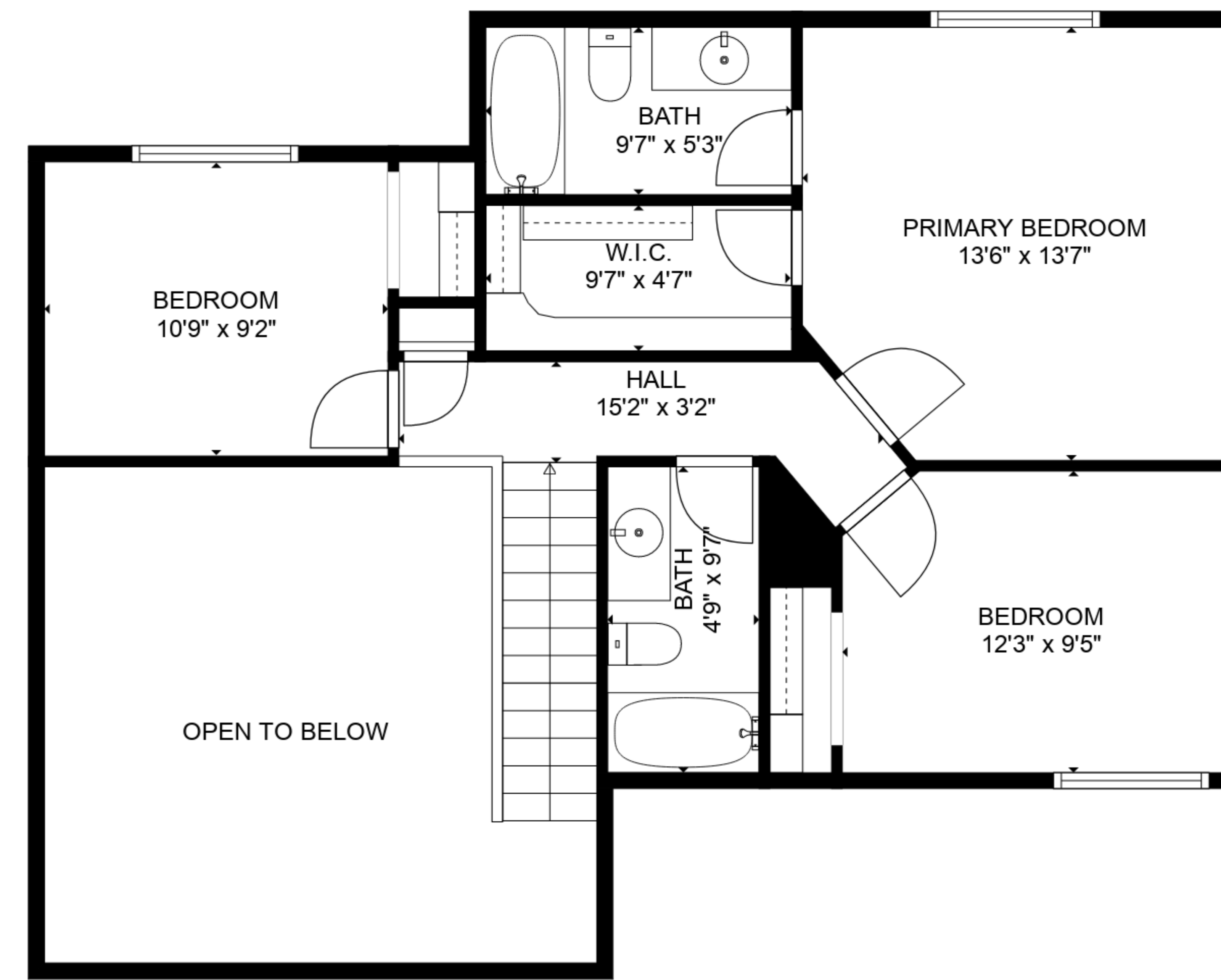
BELOW GROUND: 714 sq. ft, FLOOR 2: 827 sq. ft, FLOOR 3: 683 sq. ft

EXCLUDED AREAS: ELECTRICAL ROOM: 31 sq. ft, GARAGE: 380 sq. ft, OPEN TO BELOW: 233 sq. ft

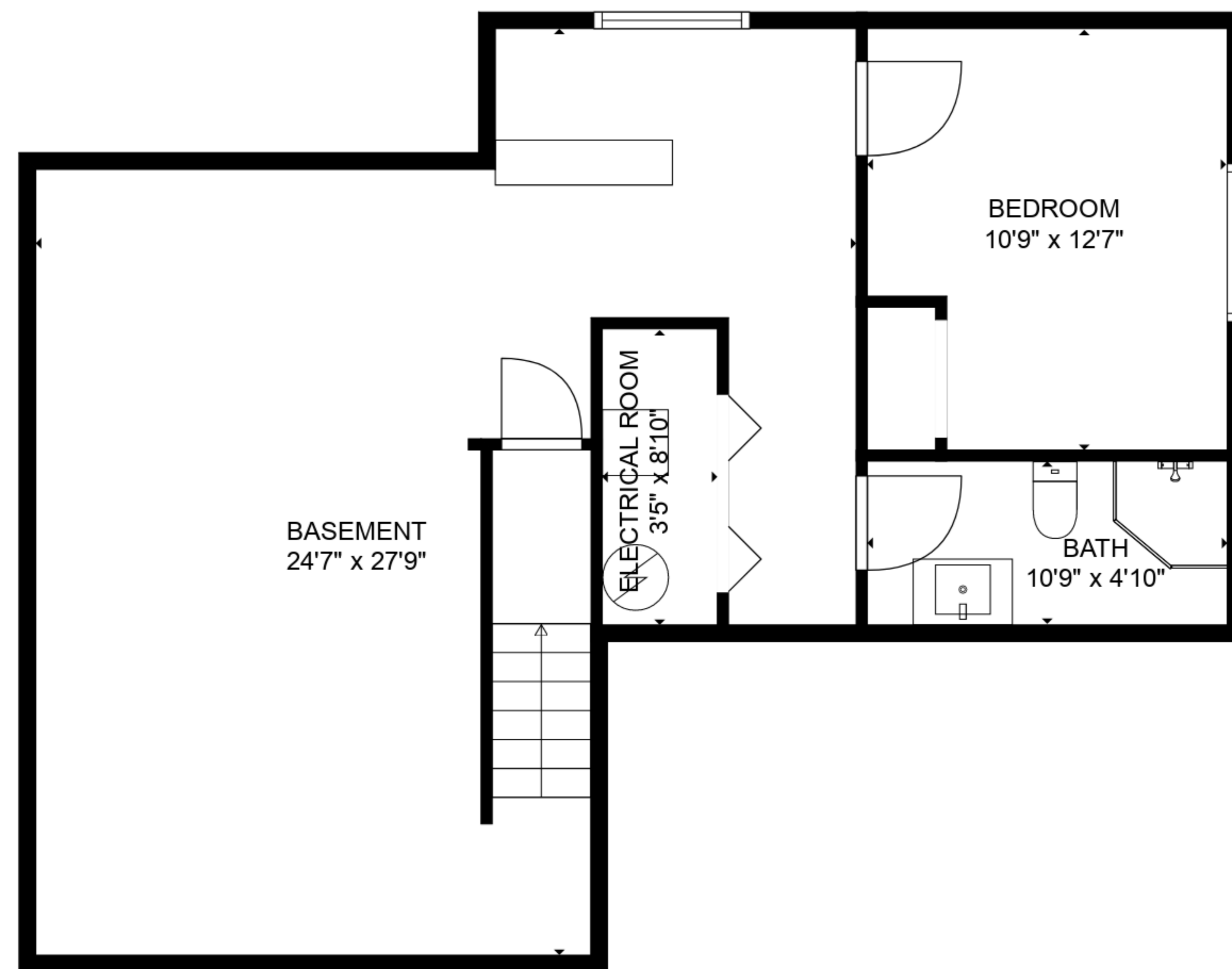
SIZES AND DIMENSIONS ARE APPROXIMATE, ACTUAL MAY VARY.



FLOOR 2



FLOOR 3



FLOOR 1

TOTAL: 2224 sq. ft
 BELOW GROUND: 714 sq. ft, FLOOR 2: 827 sq. ft, FLOOR 3: 683 sq. ft
 EXCLUDED AREAS: ELECTRICAL ROOM: 31 sq. ft, GARAGE: 380 sq. ft, OPEN TO BELOW: 233 sq. ft

SIZES AND DIMENSIONS ARE APPROXIMATE, ACTUAL MAY VARY.