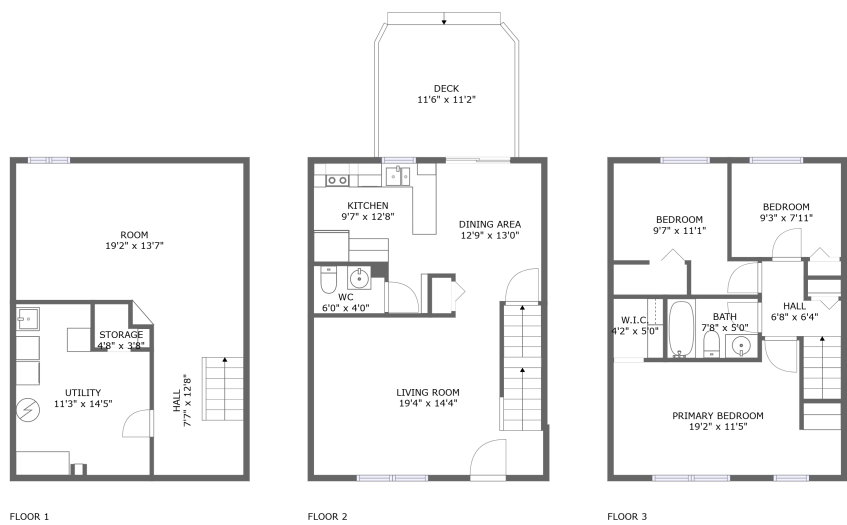




Home report


18015 Queen Elizabeth Drive, Olney Oaks, Olney, Montgomery County, Maryland, United States, 20832




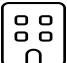
Property summary


 **0**
Garages


 **3**
Bedrooms

 **1**
Bathrooms

 **1**
Half baths

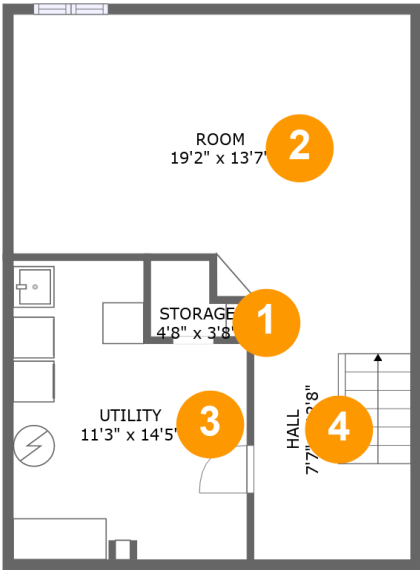
 **3**
Floors

 **1,606**
Gross living area sqft

 **1,746**
Total sqft

Home report

18015 Queen Elizabeth Drive, Olney Oaks, Olney, Montgomery County, Maryland, United States, 20832



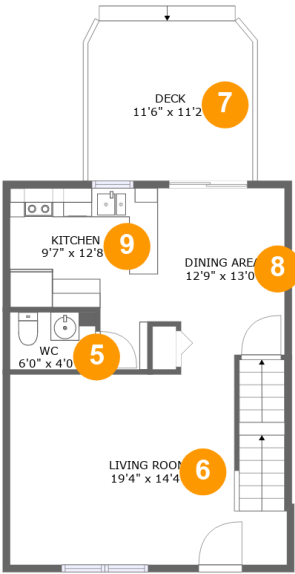
Room dimensions

Floor 1 Total sqft: 537 Living area: 524

#		Max Dimensions	sqft	Included
1	Storage	4'8" x 3'8"	13 sq. ft	No
2	Room	19'2" x 13'7"	241 sq. ft	Yes
3	Utility	11'3" x 14'5"	143 sq. ft	Yes
4	Hall	7'7" x 12'8"	96 sq. ft	Yes

Home report

18015 Queen Elizabeth Drive, Olney Oaks, Olney, Montgomery County, Maryland, United States, 20832



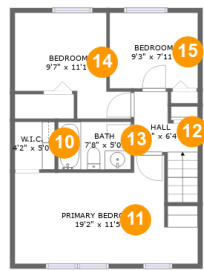
Room dimensions

Floor 2 Total sqft: 671 Living area: 544

#		Max Dimensions	sqft	Included
5	WC	6'0" x 4'0"	24 sq. ft	Yes
6	Living Room	19'4" x 14'4"	257 sq. ft	Yes
7	Deck	11'6" x 11'2"	127 sq. ft	No
8	Dining Area	12'9" x 13'0"	111 sq. ft	Yes
9	Kitchen	9'7" x 12'8"	95 sq. ft	Yes

Home report

18015 Queen Elizabeth Drive, Olney Oaks, Olney, Montgomery County, Maryland, United States, 20832



Room dimensions

Floor 3

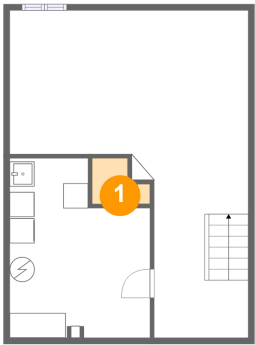
Total sqft: 538

Living area: 538

#		Max Dimensions	sqft	Included
10	W.I.C.	4'2" x 5'0"	21 sq. ft	Yes
11	Primary Bedroom	19'2" x 11'5"	176 sq. ft	Yes
12	Hall	6'8" x 6'4"	49 sq. ft	Yes
13	Bath	7'8" x 5'0"	38 sq. ft	Yes
14	Bedroom	9'7" x 11'1"	95 sq. ft	Yes
15	Bedroom	9'3" x 7'11"	73 sq. ft	Yes

18015 Queen Elizabeth Drive, Olney Oaks, Olney, Montgomery County, Maryland, United States, 20832

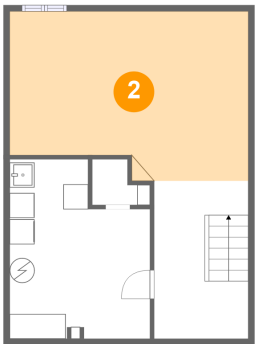
1 Floor 1 - Storage



Max Dimensions: 4'8" x 3'8"
Calculated Area: 13 sq. ft
Included: No

Heated: No
Finished: No
Enclosed: No
Contiguous: Yes
Permitted: Yes
Wet space: No
Addition: No
Conversion: No

2 Floor 1 - Room

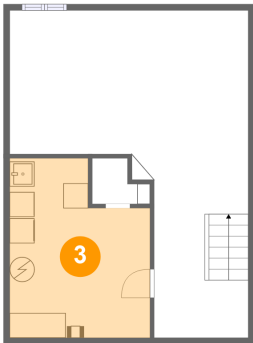


Max Dimensions: 19'2" x 13'7"
Calculated Area: 241 sq. ft
Included: Yes

Heated: Yes
Finished: Yes
Enclosed: Yes
Contiguous: Yes
Permitted: Yes
Wet space: No
Addition: No
Conversion: No

18015 Queen Elizabeth Drive, Olney Oaks, Olney, Montgomery County, Maryland, United States, 20832

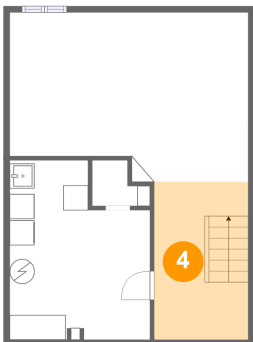
3 Floor 1 - Utility



Max Dimensions: 11'3" x 14'5"
Calculated Area: 143 sq. ft
Included: Yes

Heated: Yes
Finished: Yes
Enclosed: Yes
Contiguous: Yes
Permitted: Yes
Wet space: No
Addition: No
Conversion: No

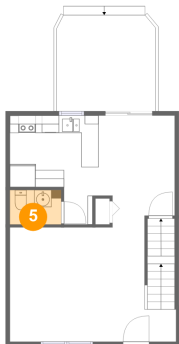
4 Floor 1 - Hall



Max Dimensions: 7'7" x 12'8"
Calculated Area: 96 sq. ft
Included: Yes

Heated: Yes
Finished: Yes
Enclosed: Yes
Contiguous: Yes
Permitted: Yes
Wet space: No
Addition: No
Conversion: No

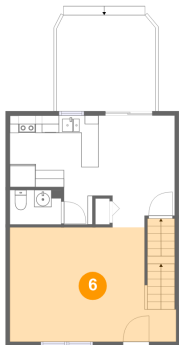
5 Floor 2 - WC



Max Dimensions: 6'0" x 4'0"
Calculated Area: 24 sq. ft
Included: Yes

Heated: Yes
Finished: Yes
Enclosed: Yes
Contiguous: Yes
Permitted: Yes
Wet space: Yes
Addition: No
Conversion: No

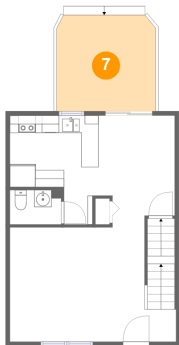
6 Floor 2 - Living Room



Max Dimensions: 19'4" x 14'4"
Calculated Area: 257 sq. ft
Included: Yes

Heated: Yes
Finished: Yes
Enclosed: Yes
Contiguous: Yes
Permitted: Yes
Wet space: No
Addition: No
Conversion: No

7 Floor 2 - Deck



Max Dimensions: 11'6" x 11'2"
Calculated Area: 127 sq. ft
Included: No

Heated: No
Finished: Yes
Enclosed: No
Contiguous: Yes
Permitted: Yes
Wet space: No
Addition: No
Conversion: No

8 Floor 2 - Dining Area



Max Dimensions: 12'9" x 13'0"
Calculated Area: 111 sq. ft
Included: Yes

Heated: Yes
Finished: Yes
Enclosed: Yes
Contiguous: Yes
Permitted: Yes
Wet space: No
Addition: No
Conversion: No

18015 Queen Elizabeth Drive, Olney Oaks, Olney, Montgomery County, Maryland, United States, 20832

9 Floor 2 - Kitchen



Max Dimensions: 9'7" x 12'8"
Calculated Area: 95 sq. ft
Included: Yes

Heated: Yes
Finished: Yes
Enclosed: Yes
Contiguous: Yes
Permitted: Yes
Wet space: No
Addition: No
Conversion: No

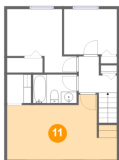
10 Floor 3 - W.I.C.



Max Dimensions: 4'2" x 5'0"
Calculated Area: 21 sq. ft
Included: Yes

Heated: Yes
Finished: Yes
Enclosed: Yes
Contiguous: Yes
Permitted: Yes
Wet space: No
Addition: No
Conversion: No

11 Floor 3 - Primary Bedroom



Max Dimensions: 19'2" x 11'5"
Calculated Area: 176 sq. ft
Included: Yes

Heated: Yes
Finished: Yes
Enclosed: Yes
Contiguous: Yes
Permitted: Yes
Wet space: No
Addition: No
Conversion: No

12 Floor 3 - Hall



Max Dimensions: 6'8" x 6'4"
Calculated Area: 49 sq. ft
Included: Yes

Heated: Yes
Finished: Yes
Enclosed: Yes
Contiguous: Yes
Permitted: Yes
Wet space: No
Addition: No
Conversion: No



13 Floor 3 - Bath



Max Dimensions: 7'8" x 5'0"
Calculated Area: 38 sq. ft
Included: Yes

Heated: Yes
Finished: Yes
Enclosed: Yes
Contiguous: Yes
Permitted: Yes
Wet space: Yes
Addition: No
Conversion: No



14 Floor 3 - Bedroom



Max Dimensions: 9'7" x 11'1"
Calculated Area: 95 sq. ft
Included: Yes

Heated: Yes
Finished: Yes
Enclosed: Yes
Contiguous: Yes
Permitted: Yes
Wet space: No
Addition: No
Conversion: No



18015 Queen Elizabeth Drive, Olney Oaks, Olney, Montgomery
County, Maryland, United States, 20832

15 Floor 3 - Bedroom



Max Dimensions: 9'3" x 7'11"
Calculated Area: 73 sq. ft
Included: Yes

Heated: Yes
Finished: Yes
Enclosed: Yes
Contiguous: Yes
Permitted: Yes
Wet space: No
Addition: No
Conversion: No