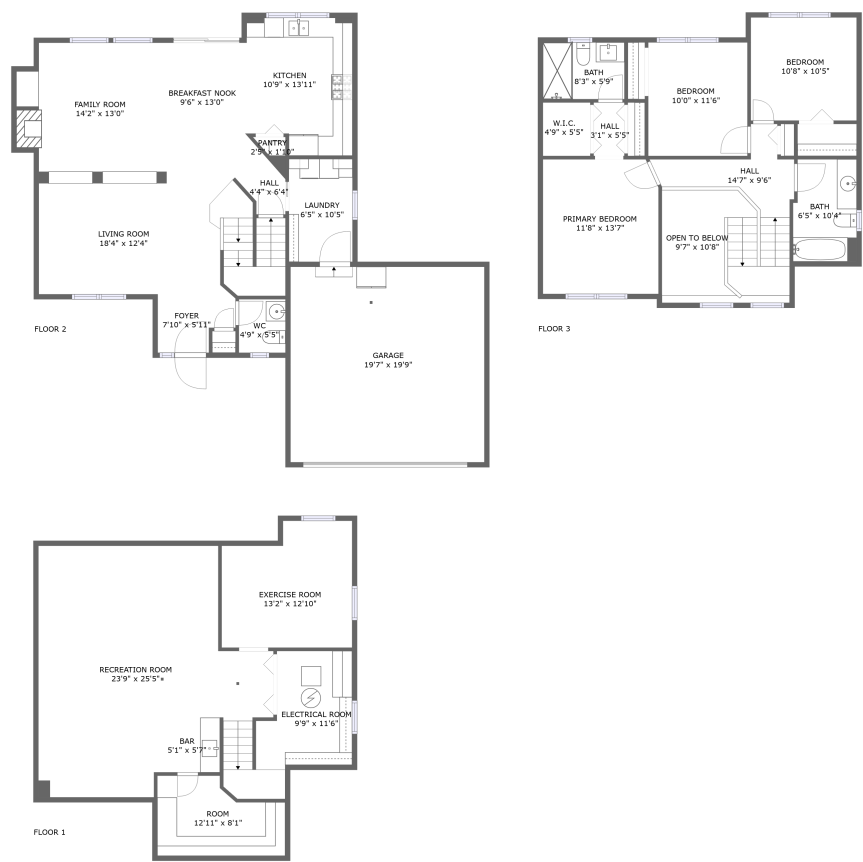


Home report

6910 Zachary Drive, Carpentersville, Kane County, Illinois,
United States, 60110



Total Area: 2032 sq. ft

Below Ground: 779 sq. ft, Floor 2: 1291 sq. ft, Floor 3: 741 sq. ft

Excluded: Electrical room 98 sq. ft, Open to below 81 sq. ft, Walls: 229 sq. ft

Property summary

 **3** Floors

 **3** Bedrooms

 **2** Bathrooms

Home report

**6910 Zachary Drive, Carpentersville, Kane County, Illinois,
United States, 60110**



1
Half baths



1
Garages

6910 Zachary Drive, Carpentersville, Kane County, Illinois,
United States, 60110

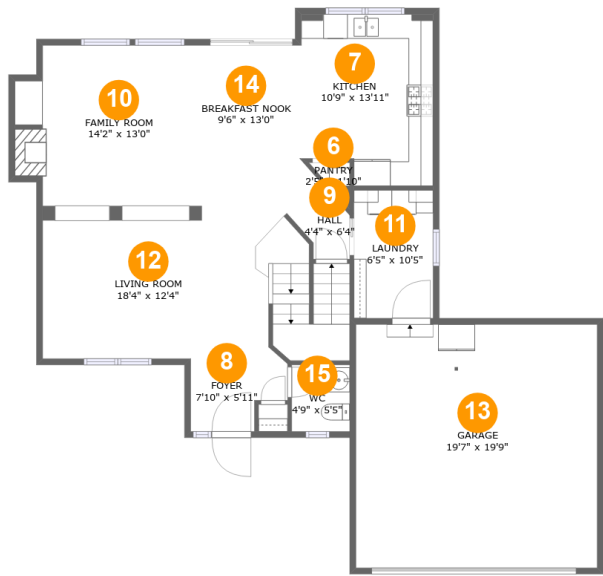


Room dimensions

Floor 1 Below ground Total:779sqft Excluded: 98sqft

#		Max Dimensions	sqft	Included
1	Electrical Room	9'9" x 11'6"	98 sq. ft	No
2	Room	12'11" x 8'1"	88 sq. ft	Yes
3	Recreation Room	23'9" x 25'5"	489 sq. ft	Yes
4	Exercise Room	13'2" x 12'10"	153 sq. ft	Yes
5	Bar	5'1" x 5'7"	28 sq. ft	Yes

6910 Zachary Drive, Carpentersville, Kane County, Illinois,
United States, 60110

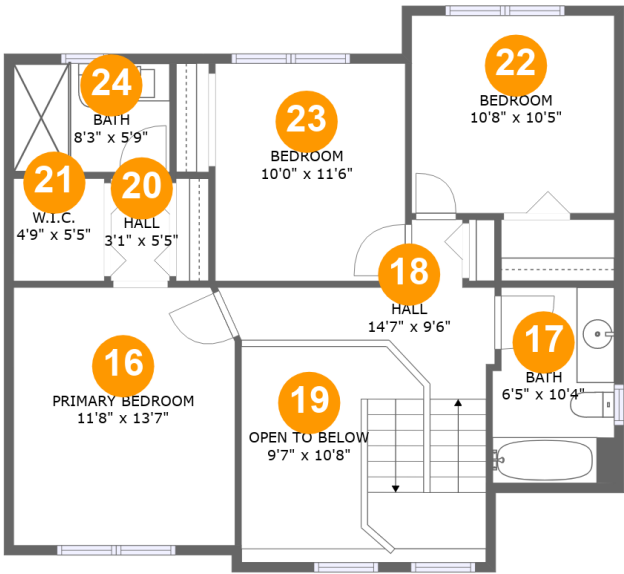


Room dimensions

Floor 2 Total:1291sqft Excluded: 0sqft

#		Max Dimensions	sqft	Included
6	Pantry	2'5" x 1'10"	6 sq. ft	Yes
7	Kitchen	10'9" x 13'11"	140 sq. ft	Yes
8	Foyer	7'10" x 5'11"	40 sq. ft	Yes
9	Hall	4'4" x 6'4"	21 sq. ft	Yes
10	Family Room	14'2" x 13'0"	172 sq. ft	Yes
11	Laundry	6'5" x 10'5"	67 sq. ft	Yes
12	Living Room	18'4" x 12'4"	287 sq. ft	Yes
13	Garage	19'7" x 19'9"	387 sq. ft	Yes
14	Breakfast Nook	9'6" x 13'0"	119 sq. ft	Yes
15	WC	4'9" x 5'5"	25 sq. ft	Yes

6910 Zachary Drive, Carpentersville, Kane County, Illinois,
United States, 60110



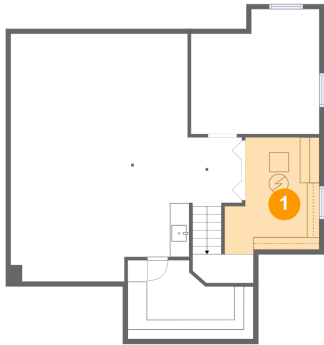
Room dimensions

Floor 3 Total:741sqft Excluded: 81sqft

#		Max Dimensions	sqft	Included
16	Primary Bedroom	11'8" x 13'7"	157 sq. ft	Yes
17	Bath	6'5" x 10'4"	64 sq. ft	Yes
18	Hall	14'7" x 9'6"	120 sq. ft	Yes
19	Open To Below	9'7" x 10'8"	81 sq. ft	No
20	Hall	3'1" x 5'5"	17 sq. ft	Yes
21	W.I.C.	4'9" x 5'5"	26 sq. ft	Yes
22	Bedroom	10'8" x 10'5"	112 sq. ft	Yes
23	Bedroom	10'0" x 11'6"	115 sq. ft	Yes
24	Bath	8'3" x 5'9"	47 sq. ft	Yes

6910 Zachary Drive, Carpentersville, Kane County, Illinois,
United States, 60110

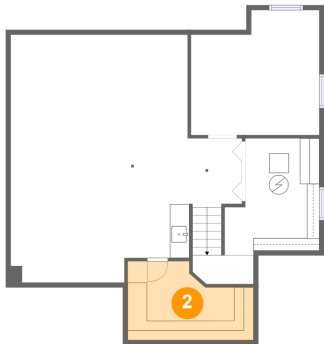
1 Floor 1 - Electrical Room



Max Dimensions: 9'9" x 11'6"
Calculated Area: 98 sq. ft
Included: No

Heated: No
Finished: No
Enclosed: Yes
Contiguous: Yes
Permitted: Yes
Wet space: No
Addition: No
Conversion: No

2 Floor 1 - Room



Max Dimensions: 12'11" x 8'1"
Calculated Area: 88 sq. ft
Included: Yes

Heated: Yes
Finished: Yes
Enclosed: Yes
Contiguous: Yes
Permitted: Yes
Wet space: No
Addition: No
Conversion: No

6910 Zachary Drive, Carpentersville, Kane County, Illinois,
United States, 60110

3 Floor 1 - Recreation Room



Max Dimensions: 23'9" x 25'5"
Calculated Area: 489 sq. ft
Included: Yes

Heated: Yes
Finished: Yes
Enclosed: Yes
Contiguous: Yes
Permitted: Yes
Wet space: No
Addition: No
Conversion: No

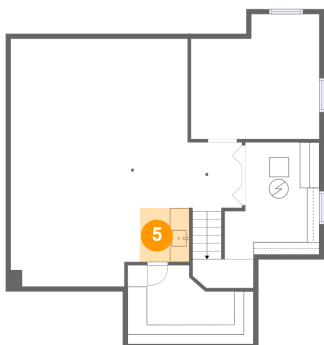
4 Floor 1 - Exercise Room



Max Dimensions: 13'2" x 12'10"
Calculated Area: 153 sq. ft
Included: Yes

Heated: Yes
Finished: Yes
Enclosed: Yes
Contiguous: Yes
Permitted: Yes
Wet space: No
Addition: No
Conversion: No

5 Floor 1 - Bar



Max Dimensions: 5'1" x 5'7"
Calculated Area: 28 sq. ft
Included: Yes

Heated: Yes
Finished: Yes
Enclosed: Yes
Contiguous: Yes
Permitted: Yes
Wet space: No
Addition: No
Conversion: No

6910 Zachary Drive, Carpentersville, Kane County, Illinois,
United States, 60110

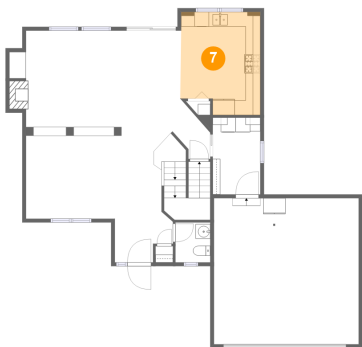
6 Floor 2 - Pantry



Max Dimensions: 2'5" x 1'10"
Calculated Area: 6 sq. ft
Included: Yes

Heated: Yes
Finished: Yes
Enclosed: Yes
Contiguous: Yes
Permitted: Yes
Wet space: No
Addition: No
Conversion: No

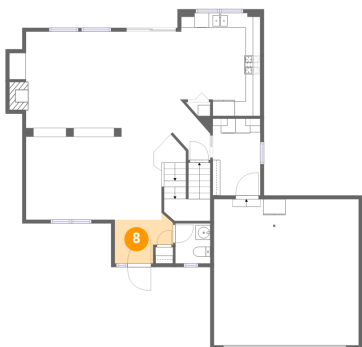
7 Floor 2 - Kitchen



Max Dimensions: 10'9" x 13'11"
Calculated Area: 140 sq. ft
Included: Yes

Heated: Yes
Finished: Yes
Enclosed: Yes
Contiguous: Yes
Permitted: Yes
Wet space: No
Addition: No
Conversion: No

8 Floor 2 - Foyer



Max Dimensions: 7'10" x 5'11"
Calculated Area: 40 sq. ft
Included: Yes

Heated: Yes
Finished: Yes
Enclosed: Yes
Contiguous: Yes
Permitted: Yes
Wet space: No
Addition: No
Conversion: No

6910 Zachary Drive, Carpentersville, Kane County, Illinois,
United States, 60110

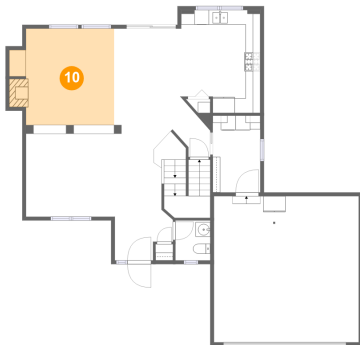
9 Floor 2 - Hall



Max Dimensions: 4'4" x 6'4"
Calculated Area: 21 sq. ft
Included: Yes

Heated: Yes
Finished: Yes
Enclosed: Yes
Contiguous: Yes
Permitted: Yes
Wet space: No
Addition: No
Conversion: No

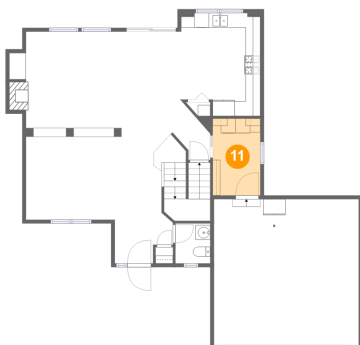
10 Floor 2 - Family Room



Max Dimensions: 14'2" x 13'0"
Calculated Area: 172 sq. ft
Included: Yes

Heated: Yes
Finished: Yes
Enclosed: Yes
Contiguous: Yes
Permitted: Yes
Wet space: No
Addition: No
Conversion: No

11 Floor 2 - Laundry

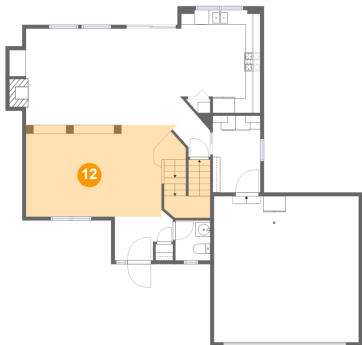


Max Dimensions: 6'5" x 10'5"
Calculated Area: 67 sq. ft
Included: Yes

Heated: Yes
Finished: Yes
Enclosed: Yes
Contiguous: Yes
Permitted: Yes
Wet space: No
Addition: No
Conversion: No

6910 Zachary Drive, Carpentersville, Kane County, Illinois,
United States, 60110

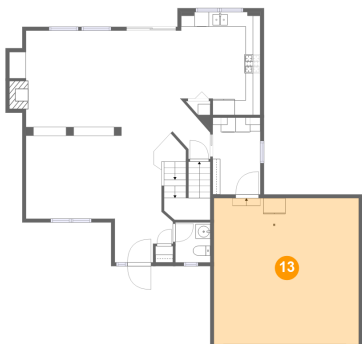
12 Floor 2 - Living Room



Max Dimensions: 18'4" x 12'4"
Calculated Area: 287 sq. ft
Included: Yes

Heated: Yes
Finished: Yes
Enclosed: Yes
Contiguous: Yes
Permitted: Yes
Wet space: No
Addition: No
Conversion: No

13 Floor 2 - Garage



Max Dimensions: 19'7" x 19'9"
Calculated Area: 387 sq. ft
Included: No

Heated: No
Finished: Yes
Enclosed: Yes
Contiguous: Yes
Permitted: Yes
Wet space: No
Addition: No
Conversion: No

14 Floor 2 - Breakfast Nook

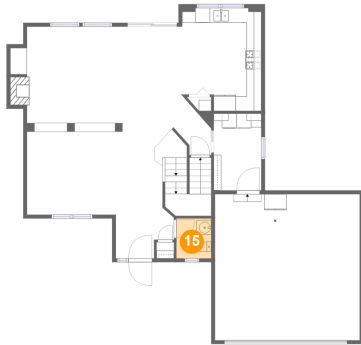


Max Dimensions: 9'6" x 13'0"
Calculated Area: 119 sq. ft
Included: Yes

Heated: Yes
Finished: Yes
Enclosed: Yes
Contiguous: Yes
Permitted: Yes
Wet space: No
Addition: No
Conversion: No

6910 Zachary Drive, Carpentersville, Kane County, Illinois,
United States, 60110

15 Floor 2 - WC



Max Dimensions: 4'9" x 5'5"
Calculated Area: 25 sq. ft
Included: Yes

Heated: Yes
Finished: Yes
Enclosed: Yes
Contiguous: Yes
Permitted: Yes
Wet space: Yes
Addition: No
Conversion: No

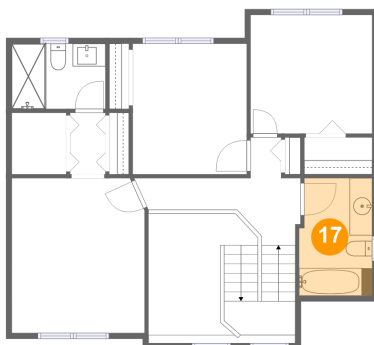
16 Floor 3 - Primary Bedroom



Max Dimensions: 11'8" x 13'7"
Calculated Area: 157 sq. ft
Included: Yes

Heated: Yes
Finished: Yes
Enclosed: Yes
Contiguous: Yes
Permitted: Yes
Wet space: No
Addition: No
Conversion: No

17 Floor 3 - Bath

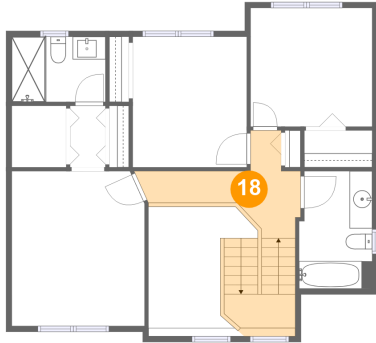


Max Dimensions: 6'5" x 10'4"
Calculated Area: 64 sq. ft
Included: Yes

Heated: Yes
Finished: Yes
Enclosed: Yes
Contiguous: Yes
Permitted: Yes
Wet space: Yes
Addition: No
Conversion: No

6910 Zachary Drive, Carpentersville, Kane County, Illinois,
United States, 60110

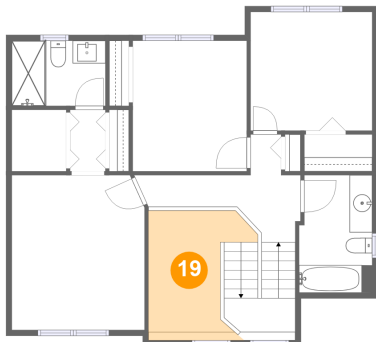
18 Floor 3 - Hall



Max Dimensions: 14'7" x 9'6"
Calculated Area: 120 sq. ft
Included: Yes

Heated: Yes
Finished: Yes
Enclosed: Yes
Contiguous: Yes
Permitted: Yes
Wet space: No
Addition: No
Conversion: No

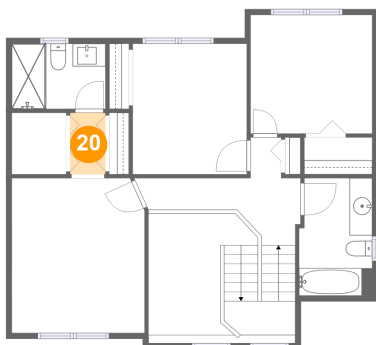
19 Floor 3 - Open To Below



Max Dimensions: 9'7" x 10'8"
Calculated Area: 81 sq. ft
Included: No

Heated: No
Finished: No
Enclosed: No
Contiguous: Yes
Permitted: No
Wet space: No
Addition: No
Conversion: No

20 Floor 3 - Hall

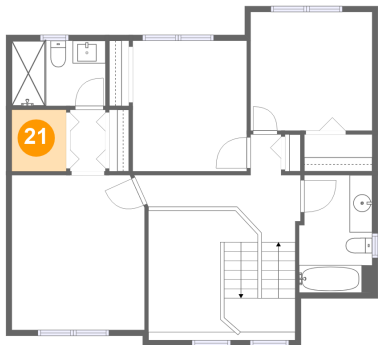


Max Dimensions: 3'1" x 5'5"
Calculated Area: 17 sq. ft
Included: Yes

Heated: Yes
Finished: Yes
Enclosed: Yes
Contiguous: Yes
Permitted: Yes
Wet space: No
Addition: No
Conversion: No

6910 Zachary Drive, Carpentersville, Kane County, Illinois,
United States, 60110

21 Floor 3 - W.I.C.



Max Dimensions: 4'9" x 5'5"
Calculated Area: 26 sq. ft
Included: Yes

Heated: Yes
Finished: Yes
Enclosed: Yes
Contiguous: Yes
Permitted: Yes
Wet space: No
Addition: No
Conversion: No

22 Floor 3 - Bedroom



Max Dimensions: 10'8" x 10'5"
Calculated Area: 112 sq. ft
Included: Yes

Heated: Yes
Finished: Yes
Enclosed: Yes
Contiguous: Yes
Permitted: Yes
Wet space: No
Addition: No
Conversion: No

23 Floor 3 - Bedroom

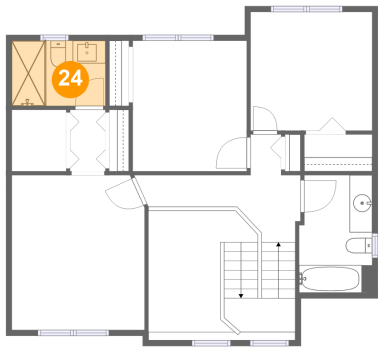


Max Dimensions: 10'0" x 11'6"
Calculated Area: 115 sq. ft
Included: Yes

Heated: Yes
Finished: Yes
Enclosed: Yes
Contiguous: Yes
Permitted: Yes
Wet space: No
Addition: No
Conversion: No

6910 Zachary Drive, Carpentersville, Kane County, Illinois,
United States, 60110

24 Floor 3 - Bath



Max Dimensions: 8'3" x 5'9"
Calculated Area: 47 sq. ft
Included: Yes

Heated: Yes
Finished: Yes
Enclosed: Yes
Contiguous: Yes
Permitted: Yes
Wet space: Yes
Addition: No
Conversion: No