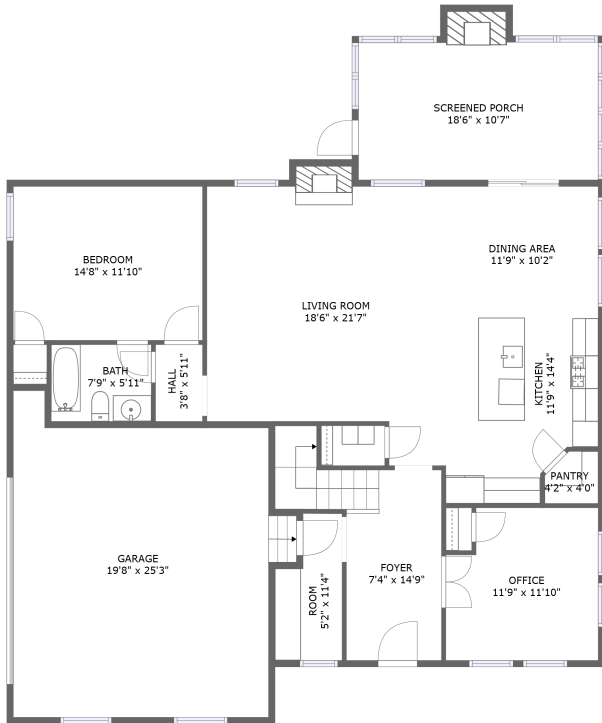
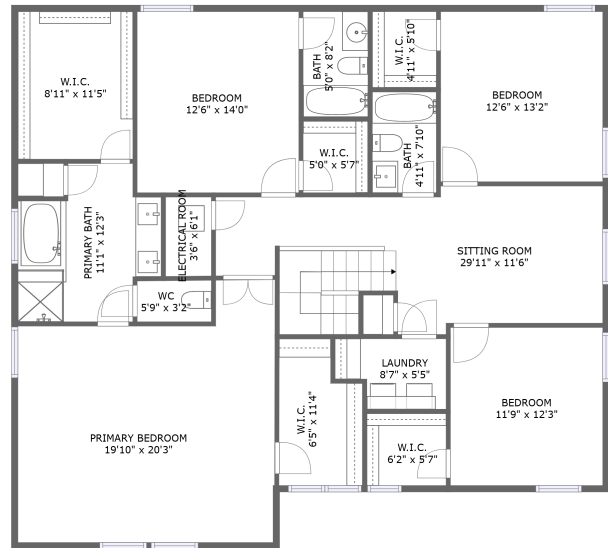


4807 Hidden Falls Ct, Moseley, VA, US




FLOOR 1



FLOOR 2

Property summary


 **1** Garages


 **5** Bedrooms

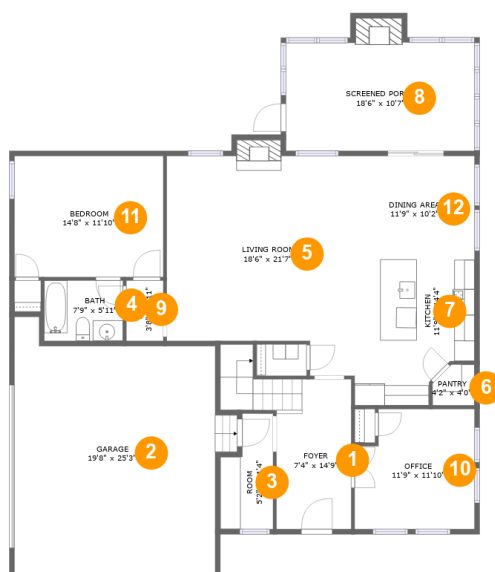
 **4** Bathrooms

 **0** Half baths

 **2** Floors

 **3,143** Gross living area sqft

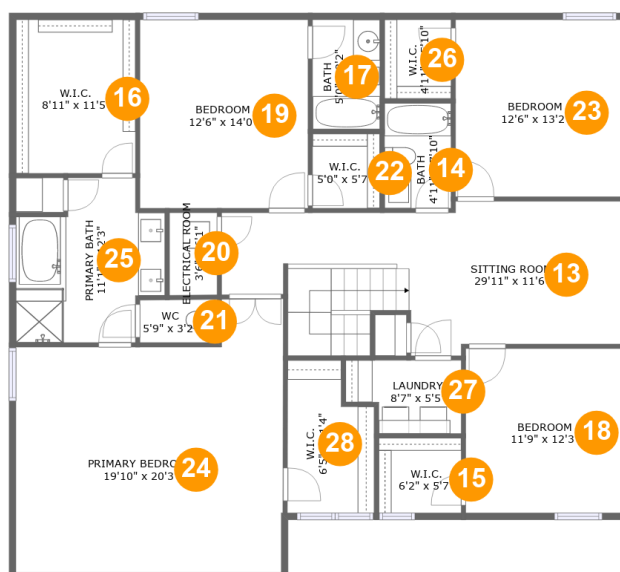
 **3,899** Total sqft

4807 Hidden Falls Ct, Moseley, VA, US**Room dimensions****Floor 1****Total sqft: 2068 Living area: 1334**

| # | | Dimensions | sqft | Counted as living area |
|----|----------------|----------------|------------|------------------------|
| 1 | Foyer | 7'4" x 14'9" | 136 sq. ft | Yes |
| 2 | Garage | 19'8" x 25'3" | 456 sq. ft | No |
| 3 | Room | 5'2" x 11'4" | 50 sq. ft | Yes |
| 4 | Bath | 7'9" x 5'11" | 46 sq. ft | Yes |
| 5 | Living Room | 18'6" x 21'7" | 357 sq. ft | Yes |
| 6 | Pantry | 4'2" x 4'0" | 15 sq. ft | Yes |
| 7 | Kitchen | 11'9" x 14'4" | 152 sq. ft | Yes |
| 8 | Screened Porch | 18'6" x 10'7" | 208 sq. ft | No |
| 9 | Hall | 3'8" x 5'11" | 22 sq. ft | Yes |
| 10 | Office | 11'9" x 11'10" | 131 sq. ft | Yes |
| 11 | Bedroom | 14'8" x 11'10" | 174 sq. ft | Yes |

4807 Hidden Falls Ct, Moseley, VA, US

| # | | Dimensions | sqft | Counted as living area |
|----|-------------|---------------|------------|------------------------|
| 12 | Dining Area | 11'9" x 10'2" | 120 sq. ft | Yes |

4807 Hidden Falls Ct, Moseley, VA, US**Room dimensions**

Floor 2

Total sqft: 1831 Living area: 1809

| # | | Dimensions | sqft | Counted as living area |
|----|-----------------|----------------|------------|------------------------|
| 13 | Sitting Room | 29'11" x 11'6" | 285 sq. ft | Yes |
| 14 | Bath | 4'11" x 7'10" | 39 sq. ft | Yes |
| 15 | W.I.C. | 6'2" x 5'7" | 34 sq. ft | Yes |
| 16 | W.I.C. | 8'11" x 11'5" | 101 sq. ft | Yes |
| 17 | Bath | 5'0" x 8'2" | 41 sq. ft | Yes |
| 18 | Bedroom | 11'9" x 12'3" | 144 sq. ft | Yes |
| 19 | Bedroom | 12'6" x 14'0" | 175 sq. ft | Yes |
| 20 | Electrical Room | 3'6" x 6'1" | 22 sq. ft | No |
| 21 | WC | 5'9" x 3'2" | 18 sq. ft | Yes |
| 22 | W.I.C. | 5'0" x 5'7" | 28 sq. ft | Yes |
| 23 | Bedroom | 12'6" x 13'2" | 165 sq. ft | Yes |

Scan captured on Wed, 12 Mar 2025 17:24:28 GMT

Information is calculated by Cubicasa technology deemed highly reliable but not guaranteed.

4807 Hidden Falls Ct, Moseley, VA, US

| # | | Dimensions | sqft | Counted as living area |
|----|-----------------|----------------|------------|------------------------|
| 24 | Primary Bedroom | 19'10" x 20'3" | 348 sq. ft | Yes |
| 25 | Primary Bath | 11'1" x 12'3" | 111 sq. ft | Yes |
| 26 | W.I.C. | 4'11" x 5'10" | 29 sq. ft | Yes |
| 27 | Laundry | 8'7" x 5'5" | 41 sq. ft | Yes |
| 28 | W.I.C. | 6'5" x 11'4" | 65 sq. ft | Yes |

4807 Hidden Falls Ct, Moseley, VA, US

1 Floor 1 - Foyer



Dimensions: 7'4" x 14'9"
Area: 136 sq. ft
Counted as living area: Yes

Heated: Yes
Finished: Yes
Enclosed: Yes
Contiguous: Yes
Permitted: Yes
Wet space: No
Addition: No
Conversion: No

2 Floor 1 - Garage

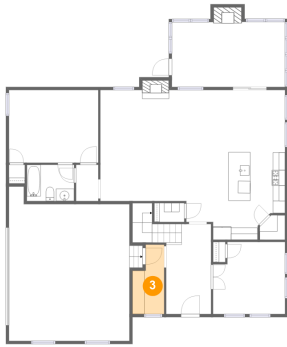


Dimensions: 19'8" x 25'3"
Area: 456 sq. ft
Counted as living area: No

Heated: No
Finished: No
Enclosed: Yes
Contiguous: Yes
Permitted: Yes
Wet space: No
Addition: No
Conversion: No

4807 Hidden Falls Ct, Moseley, VA, US

3 Floor 1 - Room



Dimensions: 5'2" x 11'4"
Area: 50 sq. ft
Counted as living area: Yes

Heated: Yes
Finished: Yes
Enclosed: Yes
Contiguous: Yes
Permitted: Yes
Wet space: No
Addition: No
Conversion: No

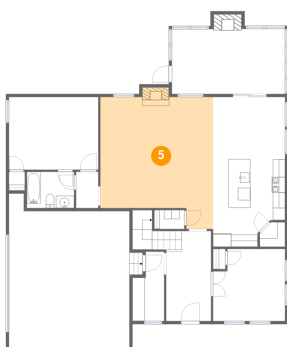
4 Floor 1 - Bath



Dimensions: 7'9" x 5'11"
Area: 46 sq. ft
Counted as living area: Yes

Heated: Yes
Finished: Yes
Enclosed: Yes
Contiguous: Yes
Permitted: Yes
Wet space: Yes
Addition: No
Conversion: No

5 Floor 1 - Living Room



Dimensions: 18'6" x 21'7"
Area: 357 sq. ft
Counted as living area: Yes

Heated: Yes
Finished: Yes
Enclosed: Yes
Contiguous: Yes
Permitted: Yes
Wet space: No
Addition: No
Conversion: No

4807 Hidden Falls Ct, Moseley, VA, US

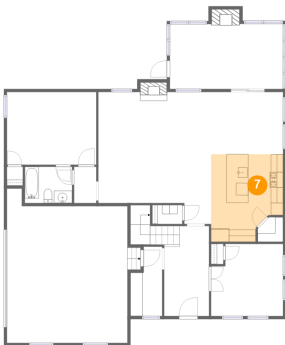
6 Floor 1 - Pantry



Dimensions: 4'2" x 4'0"
Area: 15 sq. ft
Counted as living area: Yes

Heated: Yes
Finished: Yes
Enclosed: Yes
Contiguous: Yes
Permitted: Yes
Wet space: No
Addition: No
Conversion: No

7 Floor 1 - Kitchen



Dimensions: 11'9" x 14'4"
Area: 152 sq. ft
Counted as living area: Yes

Heated: Yes
Finished: Yes
Enclosed: Yes
Contiguous: Yes
Permitted: Yes
Wet space: No
Addition: No
Conversion: No

8 Floor 1 - Screened Porch



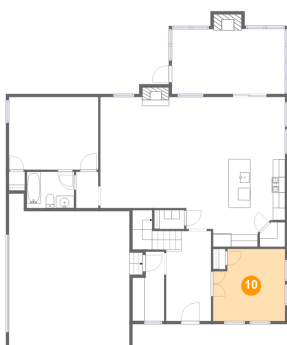
Dimensions: 18'6" x 10'7"
Area: 208 sq. ft
Counted as living area: No

Heated: No
Finished: Yes
Enclosed: No
Contiguous: Yes
Permitted: Yes
Wet space: No
Addition: No
Conversion: No

4807 Hidden Falls Ct, Moseley, VA, US**9 Floor 1 - Hall**

Dimensions: 3'8" x 5'11"
Area: 22 sq. ft
Counted as living area: Yes

Heated: Yes
Finished: Yes
Enclosed: Yes
Contiguous: Yes
Permitted: Yes
Wet space: No
Addition: No
Conversion: No

10 Floor 1 - Office

Dimensions: 11'9" x 11'10"
Area: 131 sq. ft
Counted as living area: Yes

Heated: Yes
Finished: Yes
Enclosed: Yes
Contiguous: Yes
Permitted: Yes
Wet space: No
Addition: No
Conversion: No

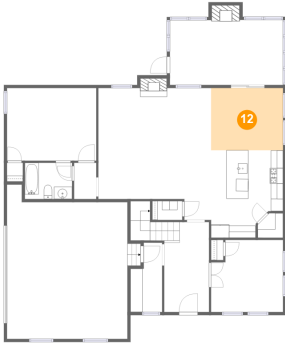
11 Floor 1 - Bedroom

Dimensions: 14'8" x 11'10"
Area: 174 sq. ft
Counted as living area: Yes

Heated: Yes
Finished: Yes
Enclosed: Yes
Contiguous: Yes
Permitted: Yes
Wet space: No
Addition: No
Conversion: No

4807 Hidden Falls Ct, Moseley, VA, US

12 Floor 1 - Dining Area



Dimensions: 11'9" x 10'2"
Area: 120 sq. ft
Counted as living area: Yes

Heated: Yes
Finished: Yes
Enclosed: Yes
Contiguous: Yes
Permitted: Yes
Wet space: No
Addition: No
Conversion: No

13 Floor 2 - Sitting Room



Dimensions: 29'11" x 11'6"
Area: 285 sq. ft
Counted as living area: Yes

Heated: Yes
Finished: Yes
Enclosed: Yes
Contiguous: Yes
Permitted: Yes
Wet space: No
Addition: No
Conversion: No

14 Floor 2 - Bath



Dimensions: 4'11" x 7'10"
Area: 39 sq. ft
Counted as living area: Yes

Heated: Yes
Finished: Yes
Enclosed: Yes
Contiguous: Yes
Permitted: Yes
Wet space: Yes
Addition: No
Conversion: No

4807 Hidden Falls Ct, Moseley, VA, US**15 Floor 2 - W.I.C.**

Dimensions: 6'2" x 5'7"
Area: 34 sq. ft
Counted as living area: Yes

Heated: Yes
Finished: Yes
Enclosed: Yes
Contiguous: Yes
Permitted: Yes
Wet space: No
Addition: No
Conversion: No

16 Floor 2 - W.I.C.

Dimensions: 8'11" x 11'5"
Area: 101 sq. ft
Counted as living area: Yes

Heated: Yes
Finished: Yes
Enclosed: Yes
Contiguous: Yes
Permitted: Yes
Wet space: No
Addition: No
Conversion: No

17 Floor 2 - Bath

Dimensions: 5'0" x 8'2"
Area: 41 sq. ft
Counted as living area: Yes

Heated: Yes
Finished: Yes
Enclosed: Yes
Contiguous: Yes
Permitted: Yes
Wet space: Yes
Addition: No
Conversion: No

4807 Hidden Falls Ct, Moseley, VA, US

18 Floor 2 - Bedroom



Dimensions: 11'9" x 12'3"
Area: 144 sq. ft
Counted as living area: Yes

Heated: Yes
Finished: Yes
Enclosed: Yes
Contiguous: Yes
Permitted: Yes
Wet space: No
Addition: No
Conversion: No

19 Floor 2 - Bedroom



Dimensions: 12'6" x 14'0"
Area: 175 sq. ft
Counted as living area: Yes

Heated: Yes
Finished: Yes
Enclosed: Yes
Contiguous: Yes
Permitted: Yes
Wet space: No
Addition: No
Conversion: No

20 Floor 2 - Electrical Room



Dimensions: 3'6" x 6'1"
Area: 22 sq. ft
Counted as living area: No

Heated: No
Finished: No
Enclosed: Yes
Contiguous: Yes
Permitted: Yes
Wet space: No
Addition: No
Conversion: No

4807 Hidden Falls Ct, Moseley, VA, US

21 Floor 2 - WC



Dimensions: 5'9" x 3'2"
Area: 18 sq. ft
Counted as living area: Yes

Heated: Yes
Finished: Yes
Enclosed: Yes
Contiguous: Yes
Permitted: Yes
Wet space: Yes
Addition: No
Conversion: No

22 Floor 2 - W.I.C.



Dimensions: 5'0" x 5'7"
Area: 28 sq. ft
Counted as living area: Yes

Heated: Yes
Finished: Yes
Enclosed: Yes
Contiguous: Yes
Permitted: Yes
Wet space: No
Addition: No
Conversion: No

23 Floor 2 - Bedroom



Dimensions: 12'6" x 13'2"
Area: 165 sq. ft
Counted as living area: Yes

Heated: Yes
Finished: Yes
Enclosed: Yes
Contiguous: Yes
Permitted: Yes
Wet space: No
Addition: No
Conversion: No

4807 Hidden Falls Ct, Moseley, VA, US

24 Floor 2 - Primary Bedroom



Dimensions: 19'10" x 20'3"
Area: 348 sq. ft
Counted as living area: Yes

Heated: Yes
Finished: Yes
Enclosed: Yes
Contiguous: Yes
Permitted: Yes
Wet space: No
Addition: No
Conversion: No

25 Floor 2 - Primary Bath



Dimensions: 11'1" x 12'3"
Area: 111 sq. ft
Counted as living area: Yes

Heated: Yes
Finished: Yes
Enclosed: Yes
Contiguous: Yes
Permitted: Yes
Wet space: Yes
Addition: No
Conversion: No

26 Floor 2 - W.I.C.



Dimensions: 4'11" x 5'10"
Area: 29 sq. ft
Counted as living area: Yes

Heated: Yes
Finished: Yes
Enclosed: Yes
Contiguous: Yes
Permitted: Yes
Wet space: No
Addition: No
Conversion: No

4807 Hidden Falls Ct, Moseley, VA, US

27 Floor 2 - Laundry



Dimensions: 8'7" x 5'5"
Area: 41 sq. ft
Counted as living area: Yes

Heated: Yes
Finished: Yes
Enclosed: Yes
Contiguous: Yes
Permitted: Yes
Wet space: No
Addition: No
Conversion: No

28 Floor 2 - W.I.C.



Dimensions: 6'5" x 11'4"
Area: 65 sq. ft
Counted as living area: Yes

Heated: Yes
Finished: Yes
Enclosed: Yes
Contiguous: Yes
Permitted: Yes
Wet space: No
Addition: No
Conversion: No