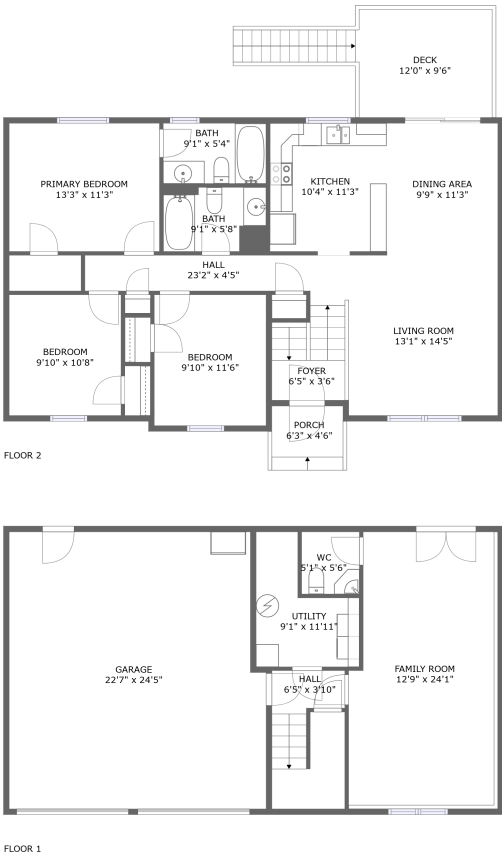


Home report

916 Slusser Lane, Old Manor, Hollins, Roanoke, Roanoke County, Virginia, United States, 24019




Total Area: 1530 sq. ft

Below Ground: 424 sq. ft, Floor 2: 1106 sq. ft

Excluded: Garage 535 sq. ft, Utility 76 sq. ft, Deck 143 sq. ft, Porch 35 sq. ft, Walls: 151 sq. ft

Property summary

 2 Floors

 3 Bedrooms

 2 Bathrooms

Home report

**916 Slusser Lane, Old Manor, Hollins, Roanoke, Roanoke
County, Virginia, United States, 24019**



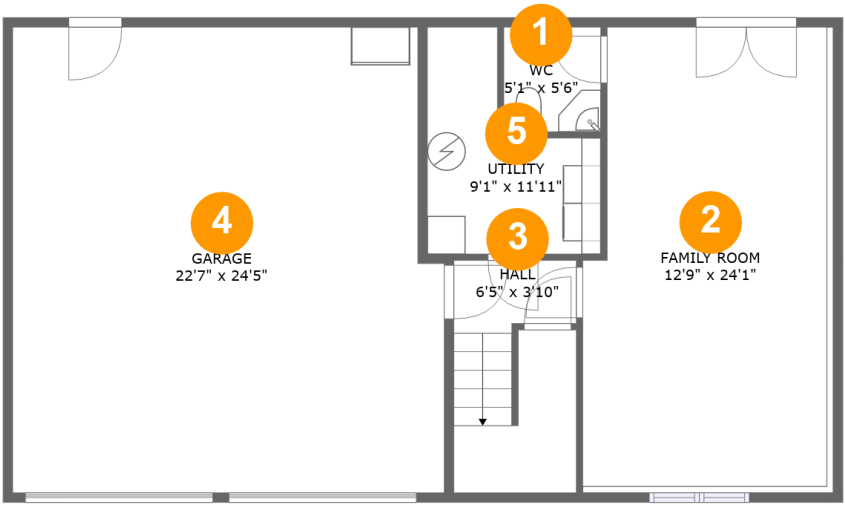
1
Half baths



1
Garages

Home report

916 Slusser Lane, Old Manor, Hollins, Roanoke, Roanoke County, Virginia, United States, 24019



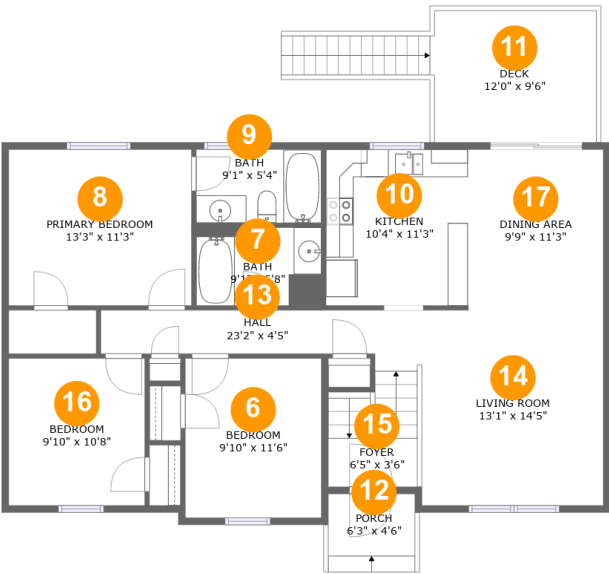
Room dimensions

Floor 1 Below ground Total:424sqft Excluded: 611sqft

#		Max Dimensions	sqft	Included
1	WC	5'1" x 5'6"	28 sq. ft	Yes
2	Family Room	12'9" x 24'1"	304 sq. ft	Yes
3	Hall	6'5" x 3'10"	75 sq. ft	Yes
4	Garage	22'7" x 24'5"	534 sq. ft	No
5	Utility	9'1" x 11'11"	76 sq. ft	No

Home report

916 Slusser Lane, Old Manor, Hollins, Roanoke, Roanoke County, Virginia, United States, 24019



Room dimensions

Floor 2 Total:1106sqft Excluded: 178sqft

#		Max Dimensions	sqft	Included
6	Bedroom	9'10" x 11'6"	113 sq. ft	Yes
7	Bath	9'1" x 5'8"	51 sq. ft	Yes
8	Primary Bedroom	13'3" x 11'3"	149 sq. ft	Yes
9	Bath	9'1" x 5'4"	48 sq. ft	Yes
10	Kitchen	10'4" x 11'3"	116 sq. ft	Yes
11	Deck	12'0" x 9'6"	143 sq. ft	No
12	Porch	6'3" x 4'6"	35 sq. ft	No
13	Hall	23'2" x 4'5"	77 sq. ft	Yes
14	Living Room	13'1" x 14'5"	188 sq. ft	Yes
15	Foyer	6'5" x 3'6"	51 sq. ft	Yes
16	Bedroom	9'10" x 10'8"	105 sq. ft	Yes

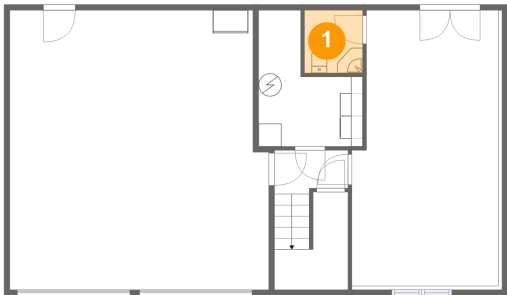
Home report

916 Slusser Lane, Old Manor, Hollins, Roanoke, Roanoke
County, Virginia, United States, 24019

#		Max Dimensions	sqft	Included
17	Dining Area	9'9" x 11'3"	110 sq. ft	Yes

916 Slusser Lane, Old Manor, Hollins, Roanoke, Roanoke
County, Virginia, United States, 24019

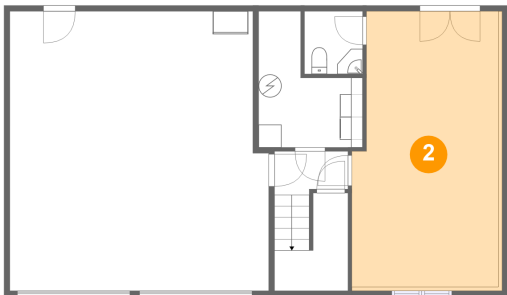
1 Floor 1 - WC



Max Dimensions: 5'1" x 5'6"
Calculated Area: 28 sq. ft
Included: Yes

Heated: Yes
Finished: Yes
Enclosed: Yes
Contiguous: Yes
Permitted: Yes
Wet space: Yes
Addition: No
Conversion: No

2 Floor 1 - Family Room

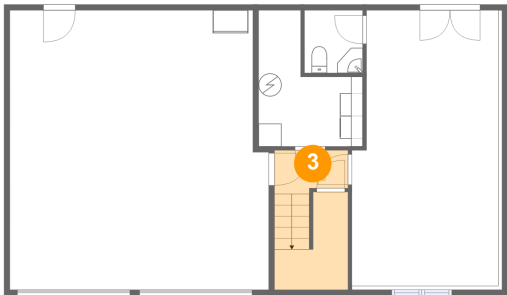


Max Dimensions: 12'9" x 24'1"
Calculated Area: 304 sq. ft
Included: Yes

Heated: Yes
Finished: Yes
Enclosed: Yes
Contiguous: Yes
Permitted: Yes
Wet space: No
Addition: No
Conversion: No

916 Slusser Lane, Old Manor, Hollins, Roanoke, Roanoke
County, Virginia, United States, 24019

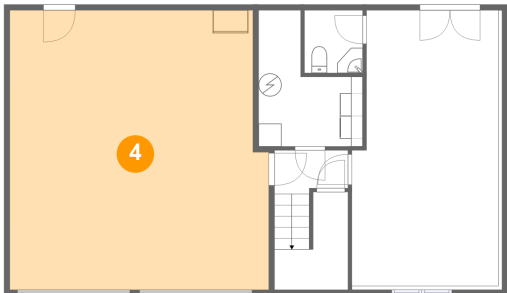
3 Floor 1 - Hall



Max Dimensions: 6'5" x 3'10"
Calculated Area: 75 sq. ft
Included: Yes

Heated: Yes
Finished: Yes
Enclosed: Yes
Contiguous: Yes
Permitted: Yes
Wet space: No
Addition: No
Conversion: No

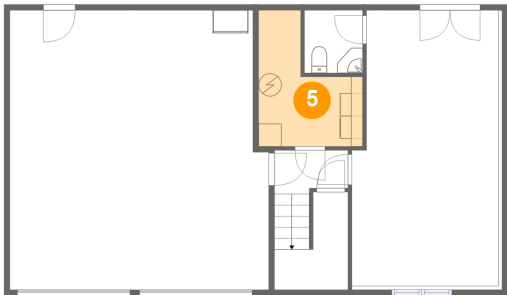
4 Floor 1 - Garage



Max Dimensions: 22'7" x 24'5"
Calculated Area: 534 sq. ft
Included: No

Heated: No
Finished: No
Enclosed: Yes
Contiguous: Yes
Permitted: Yes
Wet space: No
Addition: No
Conversion: No

5 Floor 1 - Utility

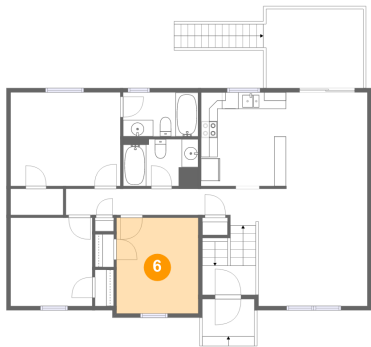


Max Dimensions: 9'1" x 11'11"
Calculated Area: 76 sq. ft
Included: No

Heated: Yes
Finished: No
Enclosed: Yes
Contiguous: Yes
Permitted: Yes
Wet space: No
Addition: No
Conversion: No

916 Slusser Lane, Old Manor, Hollins, Roanoke, Roanoke
County, Virginia, United States, 24019

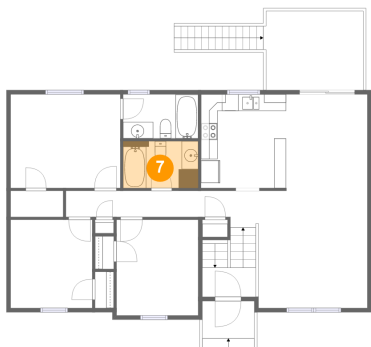
6 Floor 2 - Bedroom



Max Dimensions: 9'10" x 11'6"
Calculated Area: 113 sq. ft
Included: Yes

Heated: Yes
Finished: Yes
Enclosed: Yes
Contiguous: Yes
Permitted: Yes
Wet space: No
Addition: No
Conversion: No

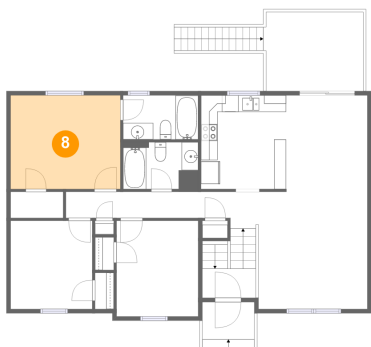
7 Floor 2 - Bath



Max Dimensions: 9'1" x 5'8"
Calculated Area: 51 sq. ft
Included: Yes

Heated: Yes
Finished: Yes
Enclosed: Yes
Contiguous: Yes
Permitted: Yes
Wet space: Yes
Addition: No
Conversion: No

8 Floor 2 - Primary Bedroom

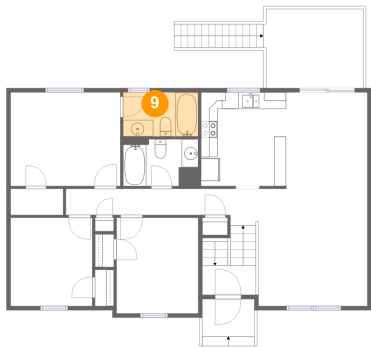


Max Dimensions: 13'3" x 11'3"
Calculated Area: 149 sq. ft
Included: Yes

Heated: Yes
Finished: Yes
Enclosed: Yes
Contiguous: Yes
Permitted: Yes
Wet space: No
Addition: No
Conversion: No

916 Slusser Lane, Old Manor, Hollins, Roanoke, Roanoke
County, Virginia, United States, 24019

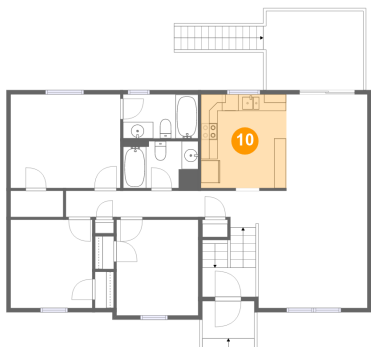
9 Floor 2 - Bath



Max Dimensions: 9'1" x 5'4"
Calculated Area: 48 sq. ft
Included: Yes

Heated: Yes
Finished: Yes
Enclosed: Yes
Contiguous: Yes
Permitted: Yes
Wet space: Yes
Addition: No
Conversion: No

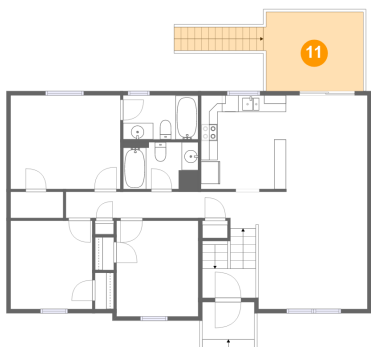
10 Floor 2 - Kitchen



Max Dimensions: 10'4" x 11'3"
Calculated Area: 116 sq. ft
Included: Yes

Heated: Yes
Finished: Yes
Enclosed: Yes
Contiguous: Yes
Permitted: Yes
Wet space: No
Addition: No
Conversion: No

11 Floor 2 - Deck

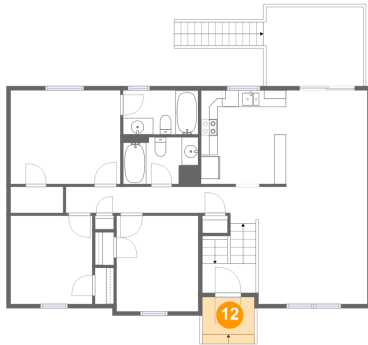


Max Dimensions: 12'0" x 9'6"
Calculated Area: 143 sq. ft
Included: No

Heated: No
Finished: Yes
Enclosed: No
Contiguous: Yes
Permitted: Yes
Wet space: No
Addition: No
Conversion: No

916 Slusser Lane, Old Manor, Hollins, Roanoke, Roanoke
County, Virginia, United States, 24019

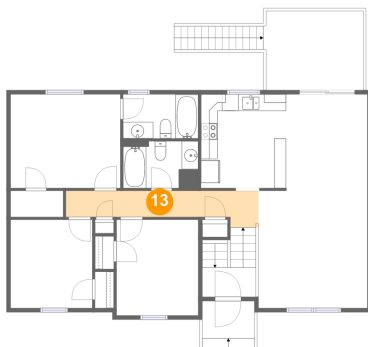
12 Floor 2 - Porch



Max Dimensions: 6'3" x 4'6"
Calculated Area: 35 sq. ft
Included: No

Heated: No
Finished: Yes
Enclosed: No
Contiguous: Yes
Permitted: Yes
Wet space: No
Addition: No
Conversion: No

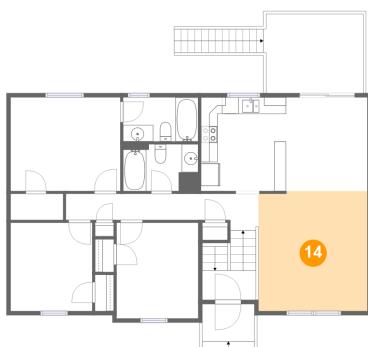
13 Floor 2 - Hall



Max Dimensions: 23'2" x 4'5"
Calculated Area: 77 sq. ft
Included: Yes

Heated: Yes
Finished: Yes
Enclosed: Yes
Contiguous: Yes
Permitted: Yes
Wet space: No
Addition: No
Conversion: No

14 Floor 2 - Living Room

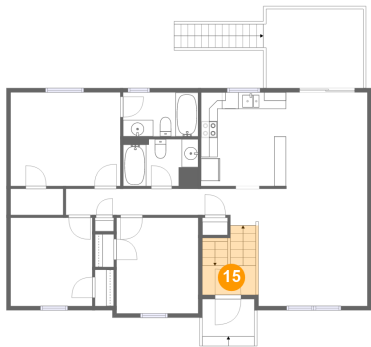


Max Dimensions: 13'1" x 14'5"
Calculated Area: 188 sq. ft
Included: Yes

Heated: Yes
Finished: Yes
Enclosed: Yes
Contiguous: Yes
Permitted: Yes
Wet space: No
Addition: No
Conversion: No

916 Slusser Lane, Old Manor, Hollins, Roanoke, Roanoke
County, Virginia, United States, 24019

15 Floor 2 - Foyer



Max Dimensions: 6'5" x 3'6"
Calculated Area: 51 sq. ft
Included: Yes

Heated: Yes
Finished: Yes
Enclosed: Yes
Contiguous: Yes
Permitted: Yes
Wet space: No
Addition: No
Conversion: No

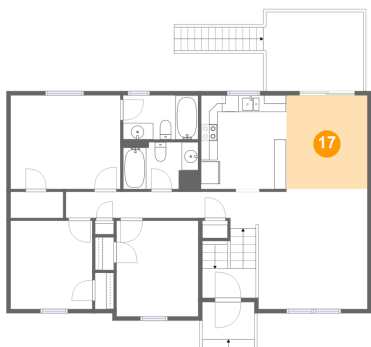
16 Floor 2 - Bedroom



Max Dimensions: 9'10" x 10'8"
Calculated Area: 105 sq. ft
Included: Yes

Heated: Yes
Finished: Yes
Enclosed: Yes
Contiguous: Yes
Permitted: Yes
Wet space: No
Addition: No
Conversion: No

17 Floor 2 - Dining Area



Max Dimensions: 9'9" x 11'3"
Calculated Area: 110 sq. ft
Included: Yes

Heated: Yes
Finished: Yes
Enclosed: Yes
Contiguous: Yes
Permitted: Yes
Wet space: No
Addition: No
Conversion: No