

3731 Bracewell Crt

Port Coquitlam, BC V3B 7B6

Main Level Area: 1,125 SQ.FT.

Upper Level Area: 665 SQ.FT.

Total Area 1,790 SQ.FT.

Garage Area: 355 SQ.FT.

4



BEDROOMS

3

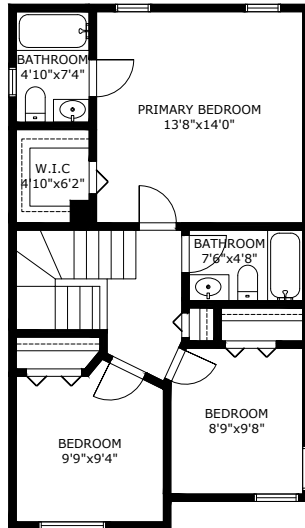


BATHROOMS

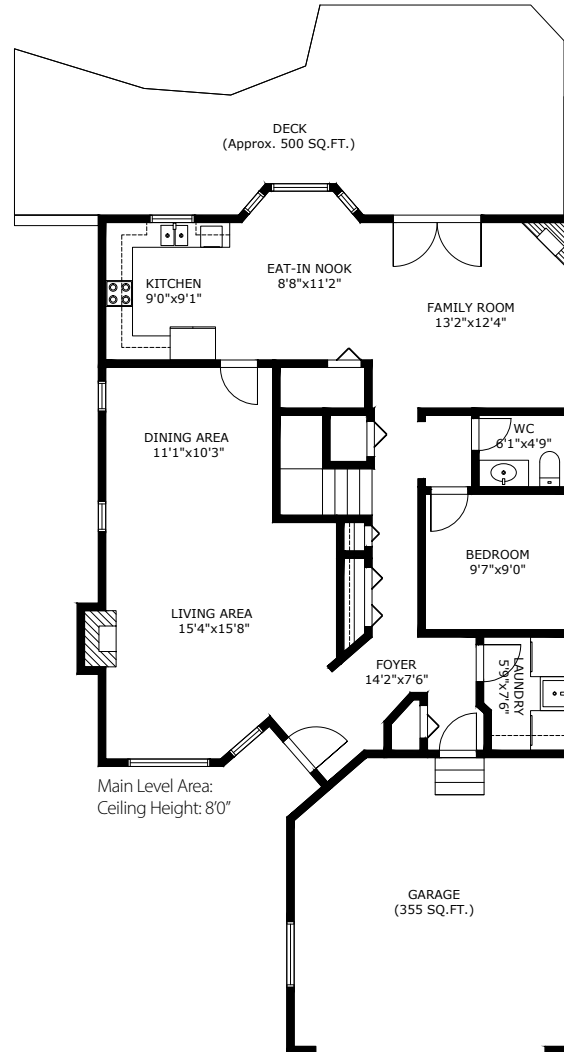
1,790



TOTAL SQ.FT.



Upper Level Area:
Ceiling Height: 8'0"



Main Level Area:
Ceiling Height: 8'0"

3731 BRACEWELL CRT, PORT COQUITLAM BC V3B 7B6

Measurements are approximate and may not be to scale. Gross measurements provided by agent.
The floor plan illustration is not suitable for construction/architectural purposes.
This communication is not intended to cause or induce breach of an existing agency agreement

3D IMMERSIVE
Tours Photos Floor Plans

Professionally measured by 3D Immersive Marketing Ltd.
Lead Floor Planner: *Simon Alexander*
Quality Assurance: *Dianne Graham*