



Home report


10 S Pond St, Newburyport, MA, US




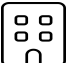
Property summary


 **1** Garages


 **4** Bedrooms

 **2** Bathrooms

 **1** Half baths

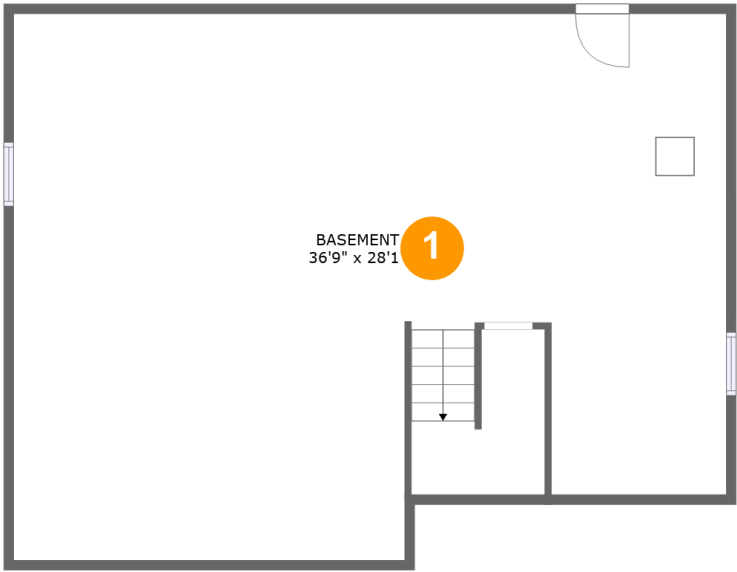
 **3** Floors

 **2,346** Gross living area sqft

 **4,059** Total sqft

Home report

10 S Pond St,Newburyport,MA,US



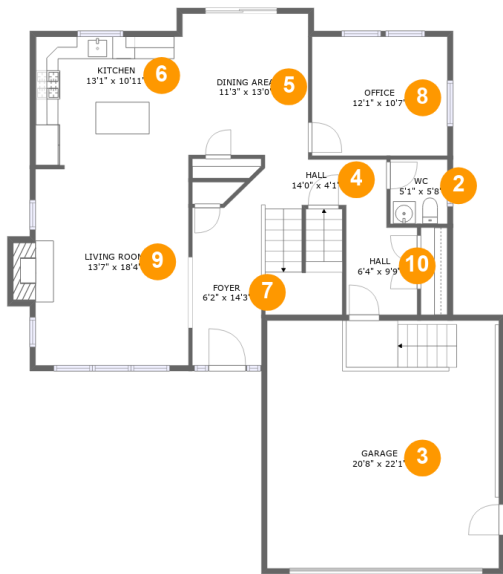
Room dimensions

Floor 1 Total sqft: 1043 Living area: 0

#		Dimensions	sqft	Counted as living area
1	Basement	36'9" x 28'1"	968 sq. ft	No

Home report

10 S Pond St,Newburyport,MA,US



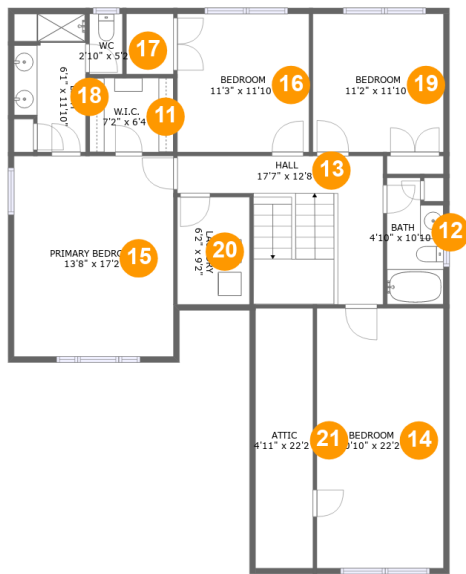
Room dimensions

Floor 2 Total sqft: 1593 Living area: 1092

#		Dimensions	sqft	Counted as living area
2	WC	5'1" x 5'8"	29 sq. ft	Yes
3	Garage	20'8" x 22'1"	456 sq. ft	No
4	Hall	14'0" x 4'1"	50 sq. ft	Yes
5	Dining Area	11'3" x 13'0"	143 sq. ft	Yes
6	Kitchen	13'1" x 10'11"	143 sq. ft	Yes
7	Foyer	6'2" x 14'3"	154 sq. ft	Yes
8	Office	12'1" x 10'7"	128 sq. ft	Yes
9	Living Room	13'7" x 18'4"	260 sq. ft	Yes
10	Hall	6'4" x 9'9"	56 sq. ft	Yes

Home report

10 S Pond St,Newburyport,MA,US

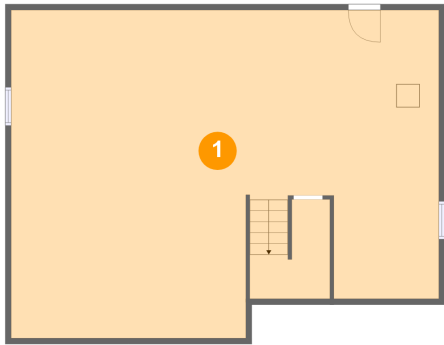


Room dimensions

Floor 3Total sqft: 1423 Living area: 1254

#		Dimensions	sqft	Counted as living area
11	W.I.C.	7'2" x 6'4"	45 sq. ft	Yes
12	Bath	4'10" x 10'10"	48 sq. ft	Yes
13	Hall	17'7" x 12'8"	161 sq. ft	Yes
14	Bedroom	10'10" x 22'2"	206 sq. ft	Yes
15	Primary Bedroom	13'8" x 17'2"	233 sq. ft	Yes
16	Bedroom	11'3" x 11'10"	133 sq. ft	Yes
17	WC	2'10" x 5'2"	14 sq. ft	Yes
18	Bath	6'1" x 11'10"	65 sq. ft	Yes
19	Bedroom	11'2" x 11'10"	132 sq. ft	Yes
20	Laundry	6'2" x 9'2"	57 sq. ft	Yes
21	Attic	4'11" x 22'2"	109 sq. ft	No

1 Floor 1 - Basement



Dimensions: 36'9" x 28'1"
Area: 968 sq. ft
Counted as living area: No

Heated: Yes
Finished: No
Enclosed: Yes
Contiguous: Yes
Permitted: Yes
Wet space: No
Addition: No
Conversion: No

2 Floor 2 - WC



Dimensions: 5'1" x 5'8"
Area: 29 sq. ft
Counted as living area: Yes

Heated: Yes
Finished: Yes
Enclosed: Yes
Contiguous: Yes
Permitted: Yes
Wet space: Yes
Addition: No
Conversion: No

3 Floor 2 - Garage



Dimensions: 20'8" x 22'1"
Area: 456 sq. ft
Counted as living area: No

Heated: No
Finished: No
Enclosed: Yes
Contiguous: Yes
Permitted: Yes
Wet space: No
Addition: No
Conversion: No

4 Floor 2 - Hall



Dimensions: 14'0" x 4'1"
Area: 50 sq. ft
Counted as living area: Yes

Heated: Yes
Finished: Yes
Enclosed: Yes
Contiguous: Yes
Permitted: Yes
Wet space: No
Addition: No
Conversion: No

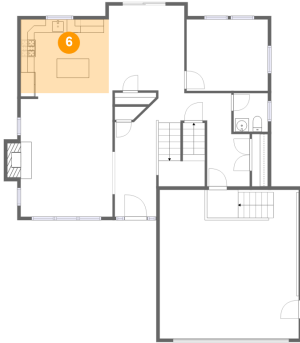
5 Floor 2 - Dining Area



Dimensions: 11'3" x 13'0"
Area: 143 sq. ft
Counted as living area: Yes

Heated: Yes
Finished: Yes
Enclosed: Yes
Contiguous: Yes
Permitted: Yes
Wet space: No
Addition: No
Conversion: No

6 Floor 2 - Kitchen



Dimensions: 13'1" x 10'11"
Area: 143 sq. ft
Counted as living area: Yes

Heated: Yes
Finished: Yes
Enclosed: Yes
Contiguous: Yes
Permitted: Yes
Wet space: No
Addition: No
Conversion: No

7 Floor 2 - Foyer



Dimensions: 6'2" x 14'3"
Area: 154 sq. ft
Counted as living area: Yes

Heated: Yes
Finished: Yes
Enclosed: Yes
Contiguous: Yes
Permitted: Yes
Wet space: No
Addition: No
Conversion: No

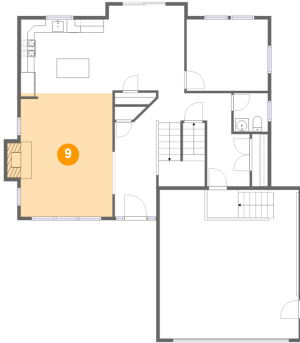
8 Floor 2 - Office



Dimensions: 12'1" x 10'7"
Area: 128 sq. ft
Counted as living area: Yes

Heated: Yes
Finished: Yes
Enclosed: Yes
Contiguous: Yes
Permitted: Yes
Wet space: No
Addition: No
Conversion: No

9 Floor 2 - Living Room



Dimensions: 13'7" x 18'4"
Area: 260 sq. ft
Counted as living area: Yes

Heated: Yes
Finished: Yes
Enclosed: Yes
Contiguous: Yes
Permitted: Yes
Wet space: No
Addition: No
Conversion: No

10 Floor 2 - Hall



Dimensions: 6'4" x 9'9"
Area: 56 sq. ft
Counted as living area: Yes

Heated: Yes
Finished: Yes
Enclosed: Yes
Contiguous: Yes
Permitted: Yes
Wet space: No
Addition: No
Conversion: No

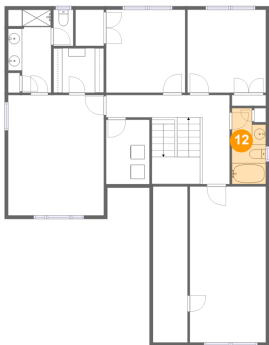
11 Floor 3 - W.I.C.



Dimensions: 7'2" x 6'4"
Area: 45 sq. ft
Counted as living area: Yes

Heated: Yes
Finished: Yes
Enclosed: Yes
Contiguous: Yes
Permitted: Yes
Wet space: No
Addition: No
Conversion: No

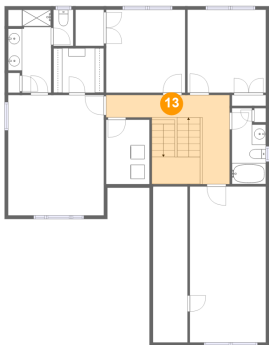
12 Floor 3 - Bath



Dimensions: 4'10" x 10'10"
Area: 48 sq. ft
Counted as living area: Yes

Heated: Yes
Finished: Yes
Enclosed: Yes
Contiguous: Yes
Permitted: Yes
Wet space: Yes
Addition: No
Conversion: No

13 Floor 3 - Hall



Dimensions: 17'7" x 12'8"
Area: 161 sq. ft
Counted as living area: Yes

Heated: Yes
Finished: Yes
Enclosed: Yes
Contiguous: Yes
Permitted: Yes
Wet space: No
Addition: No
Conversion: No

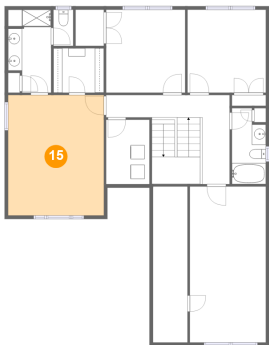
14 Floor 3 - Bedroom



Dimensions: 10'10" x 22'2"
Area: 206 sq. ft
Counted as living area: Yes

Heated: Yes
Finished: Yes
Enclosed: Yes
Contiguous: Yes
Permitted: Yes
Wet space: No
Addition: No
Conversion: No

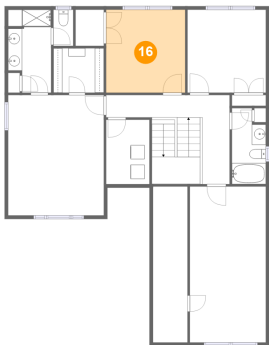
15 Floor 3 - Primary Bedroom



Dimensions: 13'8" x 17'2"
Area: 233 sq. ft
Counted as living area: Yes

Heated: Yes
Finished: Yes
Enclosed: Yes
Contiguous: Yes
Permitted: Yes
Wet space: No
Addition: No
Conversion: No

16 Floor 3 - Bedroom



Dimensions: 11'3" x 11'10"
Area: 133 sq. ft
Counted as living area: Yes

Heated: Yes
Finished: Yes
Enclosed: Yes
Contiguous: Yes
Permitted: Yes
Wet space: No
Addition: No
Conversion: No

17 Floor 3 - WC



Dimensions: 2'10" x 5'2"
Area: 14 sq. ft
Counted as living area: Yes

Heated: Yes
Finished: Yes
Enclosed: Yes
Contiguous: Yes
Permitted: Yes
Wet space: Yes
Addition: No
Conversion: No

18 Floor 3 - Bath



Dimensions: 6'1" x 11'10"
Area: 65 sq. ft
Counted as living area: Yes

Heated: Yes
Finished: Yes
Enclosed: Yes
Contiguous: Yes
Permitted: Yes
Wet space: Yes
Addition: No
Conversion: No

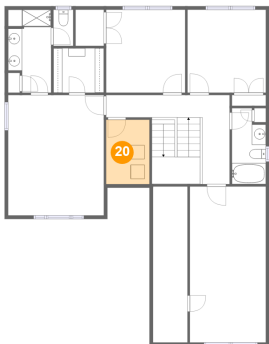
19 Floor 3 - Bedroom



Dimensions: 11'2" x 11'10"
Area: 132 sq. ft
Counted as living area: Yes

Heated: Yes
Finished: Yes
Enclosed: Yes
Contiguous: Yes
Permitted: Yes
Wet space: No
Addition: No
Conversion: No

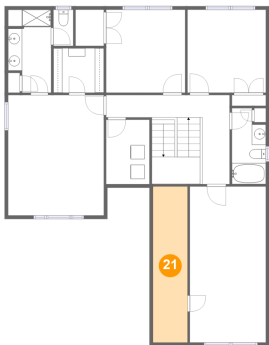
20 Floor 3 - Laundry



Dimensions: 6'2" x 9'2"
Area: 57 sq. ft
Counted as living area: Yes

Heated: Yes
Finished: Yes
Enclosed: Yes
Contiguous: Yes
Permitted: Yes
Wet space: No
Addition: No
Conversion: No

21 Floor 3 - Attic



Dimensions: 4'11" x 22'2"
Area: 109 sq. ft
Counted as living area: No

Heated: No
Finished: No
Enclosed: Yes
Contiguous: Yes
Permitted: Yes
Wet space: No
Addition: No
Conversion: No