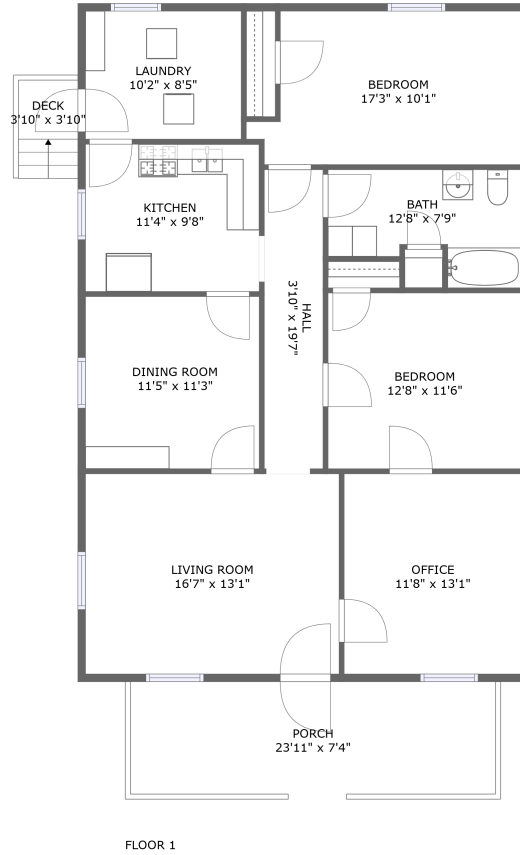



1305 Summit Lane Northwest, Edgewood, Roanoke, Roanoke, Virginia, United States,




Property Summary

 **0** garages

 **2** bedrooms

 **1** bathrooms

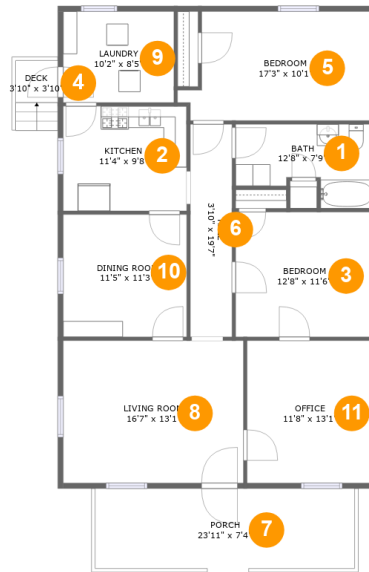
 **0** half baths

 **1** floors

 **1,314** Gross Living Area sqft

 **1,505** total sqft

1305 Summit Lane Northwest, Edgewood, Roanoke, Roanoke, Virginia, United States,



Room Dimensions

Floor 1

Total sqft: 1505

Living area: 1314

#	Room name	Dimensions	Area (sqft)	Counted as Living Area
1	Bath	12'8" x 7'9"	80 sq. ft	Yes
2	Kitchen	11'4" x 9'8"	110 sq. ft	Yes
3	Bedroom	12'8" x 11'6"	146 sq. ft	Yes
4	Deck	3'10" x 3'10"	15 sq. ft	No
5	Bedroom	17'3" x 10'1"	163 sq. ft	Yes
6	Hall	3'10" x 19'7"	75 sq. ft	Yes
7	Porch	23'11" x 7'4"	176 sq. ft	No
8	Living Room	16'7" x 13'1"	218 sq. ft	Yes
9	Laundry	10'2" x 8'5"	86 sq. ft	Yes
10	Dining Room	11'5" x 11'3"	128 sq. ft	Yes
11	Office	11'8" x 13'1"	153 sq. ft	Yes

Scan captured on Fri, 20 Sep 2024 16:19:04 GMT

Information is calculated by CubiCasa technology; deemed highly reliable but not guaranteed.

1305 Summit Lane Northwest, Edgewood, Roanoke, Roanoke, Virginia, United States,

1 Floor 1 - Bath



Dimensions: 12'8" x 7'9"
Area: 80 sq. ft
Counted as Living Area:
Yes

Heated: Yes
Finished: Yes
Enclosed: Yes
Contiguous:
Yes
Permitted: Yes
Wet Space: Yes
Addition: No
Conversion: No

2 Floor 1 - Kitchen



Dimensions: 11'4" x 9'8"
Area: 110 sq. ft
Counted as Living Area:
Yes

Heated: Yes
Finished: Yes
Enclosed: Yes
Contiguous:
Yes
Permitted: Yes
Wet Space: No
Addition: No
Conversion: No

1305 Summit Lane Northwest, Edgewood, Roanoke, Roanoke, Virginia, United States,

3 Floor 1 - Bedroom



Dimensions: 12'8" x 11'6"
Area: 146 sq. ft
Counted as Living Area:
Yes

Heated: Yes
Finished: Yes
Enclosed: Yes
Contiguous:
Yes
Permitted: Yes
Wet Space: No
Addition: No
Conversion: No

4 Floor 1 - Deck



Dimensions: 3'10" x 3'10"
Area: 15 sq. ft
Counted as Living Area: No

Heated: No
Finished: Yes
Enclosed: No
Contiguous: Yes
Permitted: Yes
Wet Space: No
Addition: No
Conversion: No

5 Floor 1 - Bedroom



Dimensions: 17'3" x 10'1"
Area: 163 sq. ft
Counted as Living Area:
Yes

Heated: Yes
Finished: Yes
Enclosed: Yes
Contiguous:
Yes
Permitted: Yes
Wet Space: No
Addition: No
Conversion: No

1305 Summit Lane Northwest, Edgewood, Roanoke, Roanoke, Virginia, United States,

6 Floor 1 - Hall



Dimensions: 3'10" x 19'7"
Area: 75 sq. ft
Counted as Living Area:
Yes

Heated: Yes
Finished: Yes
Enclosed: Yes
Contiguous:
Yes
Permitted: Yes
Wet Space: No
Addition: No
Conversion: No

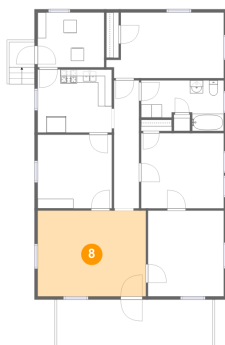
7 Floor 1 - Porch



Dimensions: 23'11" x 7'4"
Area: 176 sq. ft
Counted as Living Area: No

Heated: No
Finished: Yes
Enclosed: No
Contiguous: Yes
Permitted: Yes
Wet Space: No
Addition: No
Conversion: No

8 Floor 1 - Living Room



Dimensions: 16'7" x 13'1"
Area: 218 sq. ft
Counted as Living Area:
Yes

Heated: Yes
Finished: Yes
Enclosed: Yes
Contiguous:
Yes
Permitted: Yes
Wet Space: No
Addition: No
Conversion: No

1305 Summit Lane Northwest, Edgewood, Roanoke, Roanoke, Virginia, United States,

9 Floor 1 - Laundry



Dimensions: 10'2" x 8'5"
Area: 86 sq. ft
Counted as Living Area:
Yes

Heated: Yes
Finished: Yes
Enclosed: Yes
Contiguous:
Yes
Permitted: Yes
Wet Space: No
Addition: No
Conversion: No

10 Floor 1 - Dining Room



Dimensions: 11'5" x 11'3"
Area: 128 sq. ft
Counted as Living Area:
Yes

Heated: Yes
Finished: Yes
Enclosed: Yes
Contiguous:
Yes
Permitted: Yes
Wet Space: No
Addition: No
Conversion: No

11 Floor 1 - Office



Dimensions: 11'8" x 13'1"
Area: 153 sq. ft
Counted as Living Area:
Yes

Heated: Yes
Finished: Yes
Enclosed: Yes
Contiguous:
Yes
Permitted: Yes
Wet Space: No
Addition: No
Conversion: No