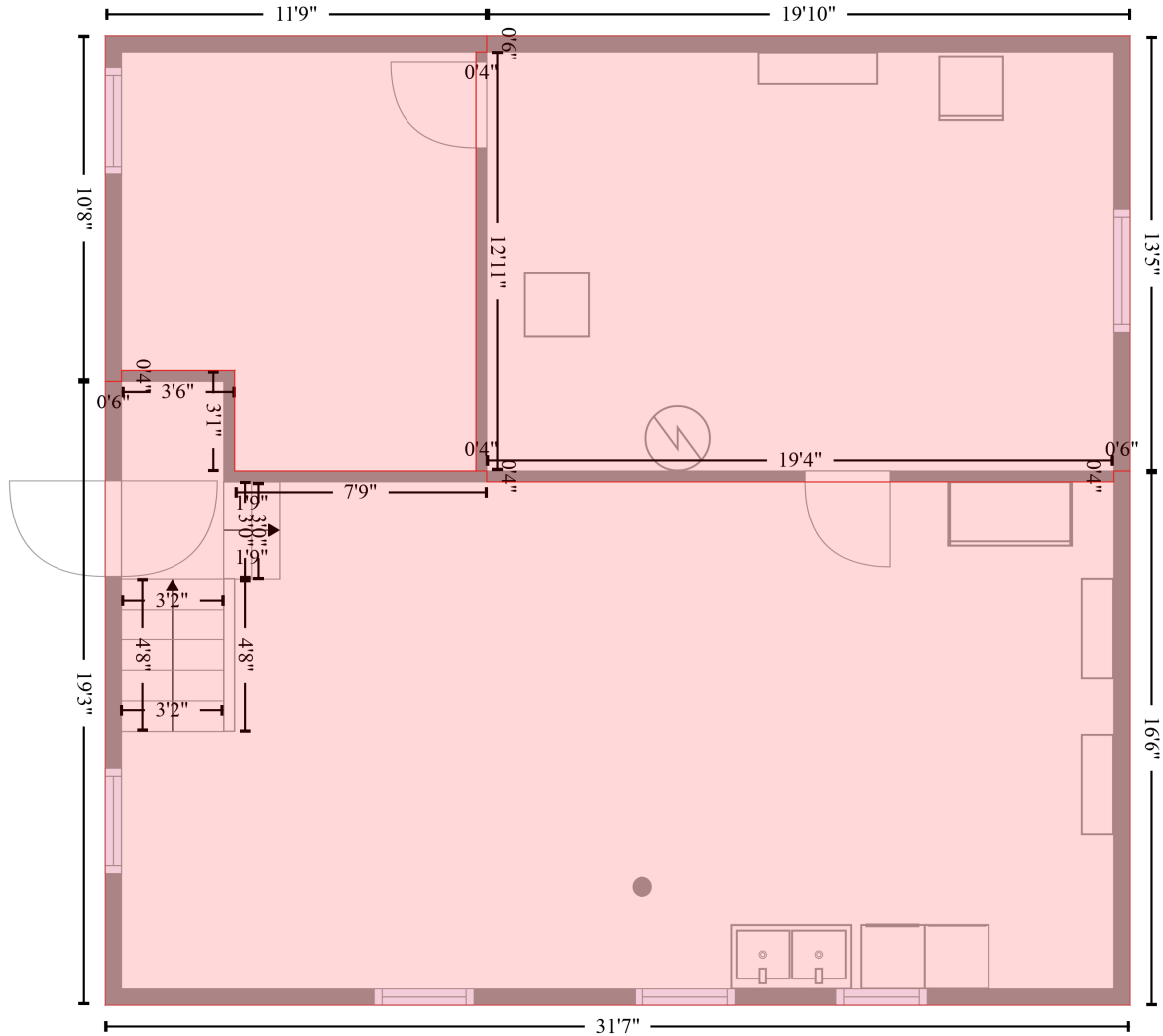


712 West Michigan Avenue, Urbana, Champaign County, Illinois, United States, 61801

Gross Living Area: 2045 sq. ft

STORAGE (3)
[AREA: 141]

UTILITY ROOM (1)
[AREA: 277]



BASEMENT (2)
[AREA: 526]

Space	Area (sq. ft)	Calculation <small>Coordinate Polygon Area Algorithm using inches</small>
UTILITY ROOM (Non-living area)	277	$-\left((381.6 + 381.6) * (106.6 - 267.5) + (381.6 + 375.6) * (267.5 - 267.5) + (375.6 + 375.6) * (267.5 - 271.5) + (375.6 + 143.7) * (271.5 - 271.5) + (143.7 + 143.7) * (271.5 - 267.5) + (143.7 + 139.7) * (267.5 - 267.5) + (139.7 + 139.7) * (267.5 - 112.6) + (139.7 + 143.7) * (112.6 - 112.6) + (143.7 + 143.7) * (112.6 - 106.6) + (143.7 + 381.6) * (106.6 - 106.6)\right) * 0.5 * 0.00694$
BASEMENT (Non-living area)	526	$-\left((50.5 + 50.5) * (230.3 - 267.5) + (50.5 + 143.7) * (267.5 - 267.5) + (143.7 + 143.7) * (267.5 - 271.5) + (143.7 + 375.6) * (271.5 - 271.5) + (375.6 + 375.6) * (271.5 - 267.5) + (375.6 + 381.6) * (267.5 - 267.5)\right) * 0.5 * 0.00694$

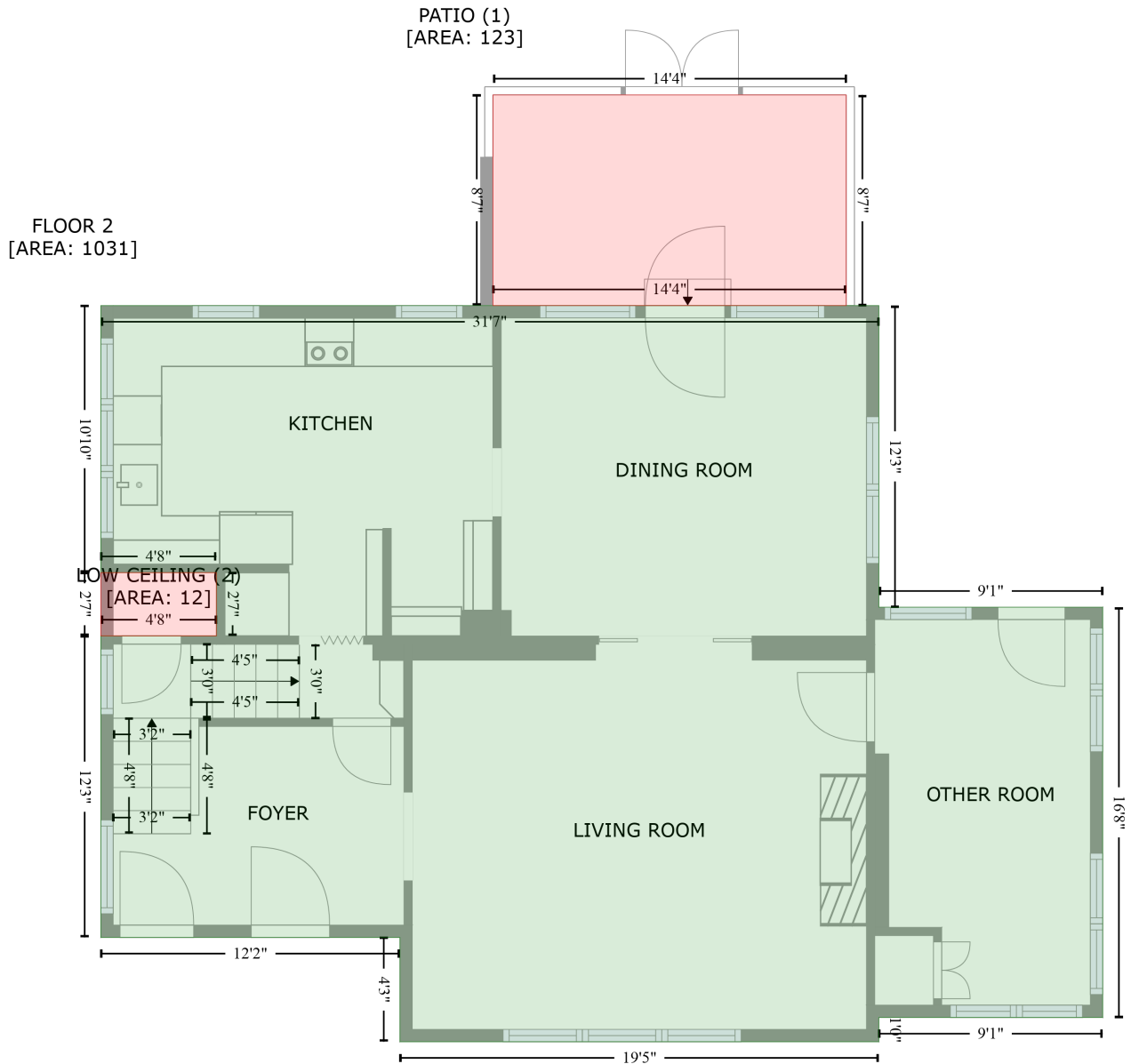
712 West Michigan Avenue, Urbana, Champaign County, Illinois, United States, 61801

Gross Living Area: 2045 sq. ft

Space	Area (sq. ft)	Calculation <small>Coordinate Polygon Area Algorithm using inches</small>
		$(267.5 - 267.5) + (381.6 + 381.6) * (267.5 - 465.1) + (381.6 + 2.7) * (465.1 - 465.1) + (2.7 + 2.7) * (465.1 - 234.3) + (2.7 + 8.7) * (234.3 - 234.3) + (8.7 + 8.7) * (234.3 - 230.3) + (8.7 + 50.5) * (230.3 - 230.3) * 0.5 * 0.00694$
STORAGE (Non-living area)	141	$-((143.7 + 143.7) * (106.6 - 112.6) + (143.7 + 139.7) * (112.6 - 112.6) + (139.7 + 139.7) * (112.6 - 267.5) + (139.7 + 50.5) * (267.5 - 267.5) + (50.5 + 50.5) * (267.5 - 230.3) + (50.5 + 8.7) * (230.3 - 230.3) + (8.7 + 8.7) * (230.3 - 234.3) + (8.7 + 2.7) * (234.3 - 234.3) + (2.7 + 2.7) * (234.3 - 106.6) + (2.7 + 143.7) * (106.6 - 106.6)) * 0.5 * 0.00694$

712 West Michigan Avenue, Urbana, Champaign County, Illinois, United States, 61801

Gross Living Area: 2045 sq. ft



Space	Area (sq. ft)	Calculation <small>Coordinate Polygon Area Algorithm using inches</small>
FLOOR 2 (Living area)	1031	$-\left((381.6 + 381.6) * (106.6 - 253.4) + (381.6 + 490.6) * (253.4 - 253.4) + (490.6 + 490.6) * (253.4 - 453.3) + (490.6 + 381.6) * (453.3 - 453.3) + (381.6 + 381.6) * (453.3 - 465.1) + (381.6 + 148.3) * (465.1 - 465.1) + (148.3 + 148.3) * (465.1 - 414.3) + (148.3 + 2.7) * (414.3 - 414.3) + (2.7 + 2.7) * (414.3 - 267.4) + (2.7 + 59) * (267.4 - 267.4) + (59 + 59) * (267.4 - 236.6) + (59 + 2.7) * (236.6 - 236.6) + (2.7 + 2.7) * (236.6 - 106.6) + (2.7 + 381.6) * (106.6 - 106.6)\right) * 0.5 * 0.00694$
PATIO	123	$-\left((365.7 + 365.7) * (4 - 106.6) + (365.7 + 193.6) * (106.6 - 106.6) + (193.6 + 193.6) * (106.6 - 4) + \right)$

712 West Michigan Avenue, Urbana, Champaign County, Illinois, United States, 61801

Gross Living Area: 2045 sq. ft

Space	Area (sq. ft)	Calculation <small>Coordinate Polygon Area Algorithm using inches</small>
(Non-living area)		$(193.6 + 365.7) * (4 - 4) * 0.5 * 0.00694$
LOW CEILING (Non-living area)	12	$-((59 + 59) * (236.6 - 267.4) + (59 + 2.7) * (267.4 - 267.4) + (2.7 + 2.7) * (267.4 - 236.6) + (2.7 + 59) * (236.6 - 236.6)) * 0.5 * 0.00694$

712 West Michigan Avenue, Urbana, Champaign County, Illinois, United States, 61801

Gross Living Area: 2045 sq. ft

FLOOR 3
[AREA: 1014]



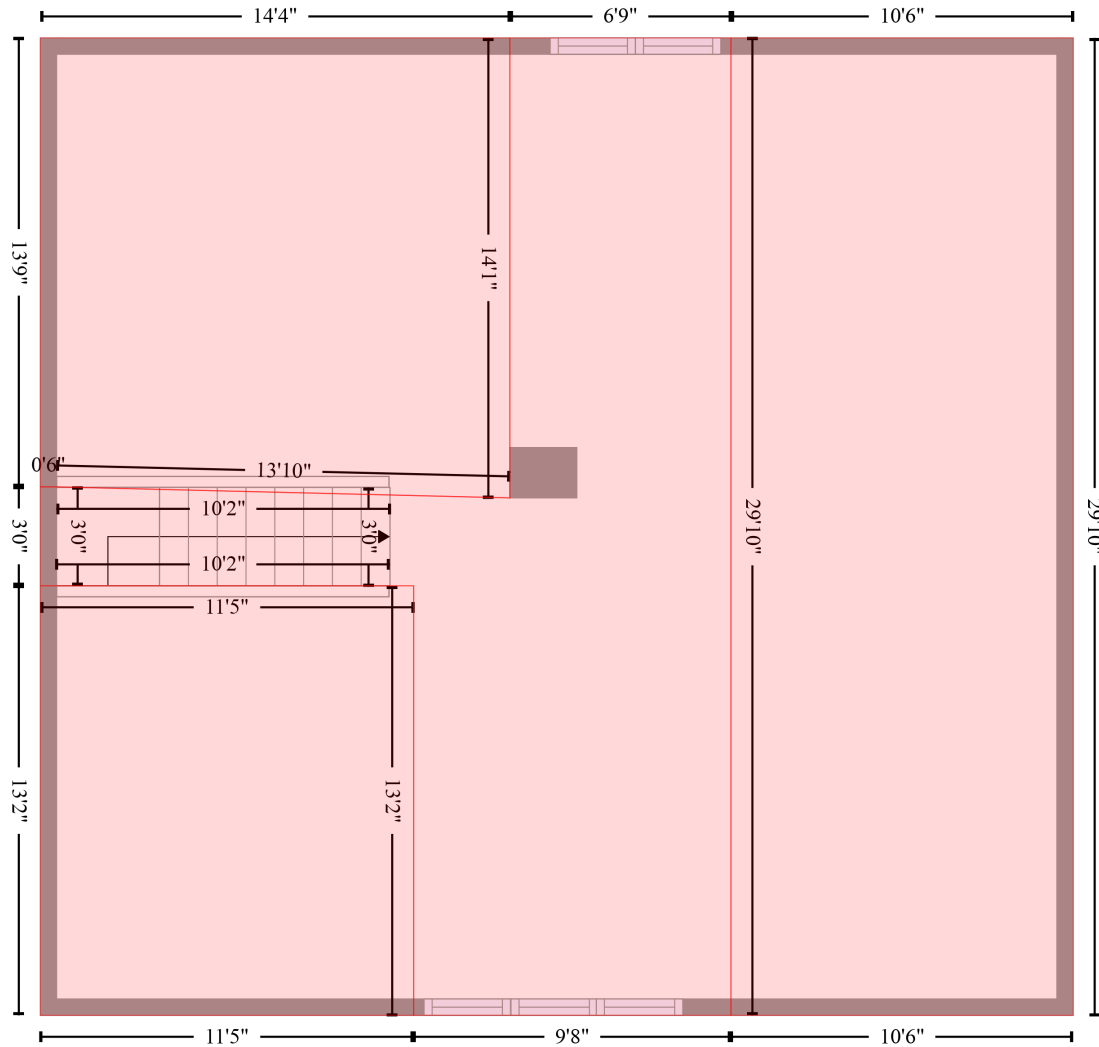
Space	Area (sq. ft)	Calculation <small>Coordinate Polygon Area Algorithm using inches</small>
FLOOR 3 (Living area)	1014	$-\left((188.7 + 188.7) * (51.9 - 106.6) + (188.7 + 381.6) * (106.6 - 106.6) + (381.6 + 381.6) * (106.6 - 465.1) + (381.6 + 2.7) * (465.1 - 465.1) + (2.7 + 2.7) * (465.1 - 51.9) + (2.7 + 188.7) * (51.9 - 51.9)\right) * 0.5 * 0.00694$

712 West Michigan Avenue, Urbana, Champaign County, Illinois, United States, 61801

Gross Living Area: 2045 sq. ft

LOW CEILING (3)
[AREA: 199]

LOW CEILING (1)
[AREA: 313]



LOW CEILING (2)
[AREA: 150]

ATTIC (4)
[AREA: 282]

Space	Area (sq. ft)	Calculation <small>Coordinate Polygon Area Algorithm using inches</small>
LOW CEILING (Non-living area)	313	$-((381.6 + 381.6) * (106.6 - 465.1) + (381.6 + 256) * (465.1 - 465.1) + (256 + 256) * (465.1 - 106.6) + (256 + 381.6) * (106.6 - 106.6)) * 0.5 * 0.00694$
LOW CEILING (Non-living area)	150	$-((139.6 + 139.6) * (307.5 - 465.1) + (139.6 + 2.7) * (465.1 - 465.1) + (2.7 + 2.7) * (465.1 - 307.5) + (2.7 + 139.6) * (307.5 - 307.5)) * 0.5 * 0.00694$
LOW CEILING (Non-living area)	199	$-((174.9 + 174.9) * (106.6 - 275.3) + (174.9 + 8.7) * (275.3 - 271.3) + (8.7 + 2.7) * (271.3 - 271.3) + (2.7 + 2.7) * (271.3 - 106.6) + (2.7 + 174.9) * (106.6 - 106.6)) * 0.5 * 0.00694$

712 West Michigan Avenue, Urbana, Champaign County, Illinois, United States, 61801

Gross Living Area: 2045 sq. ft

Space	Area (sq. ft)	Calculation <small>Coordinate Polygon Area Algorithm using inches</small>
ATTIC (Non-living area)	282	$-\left((256 + 256) * (106.6 - 465.1) + (256 + 139.6) * (465.1 - 465.1) + (139.6 + 139.6) * (465.1 - 307.5) + (139.6 + 2.7) * (307.5 - 307.5) + (2.7 + 2.7) * (307.5 - 271.3) + (2.7 + 8.7) * (271.3 - 271.3) + (8.7 + 174.9) * (271.3 - 275.3) + (174.9 + 174.9) * (275.3 - 106.6) + (174.9 + 256) * (106.6 - 106.6)\right) * 0.5 * 0.00694$