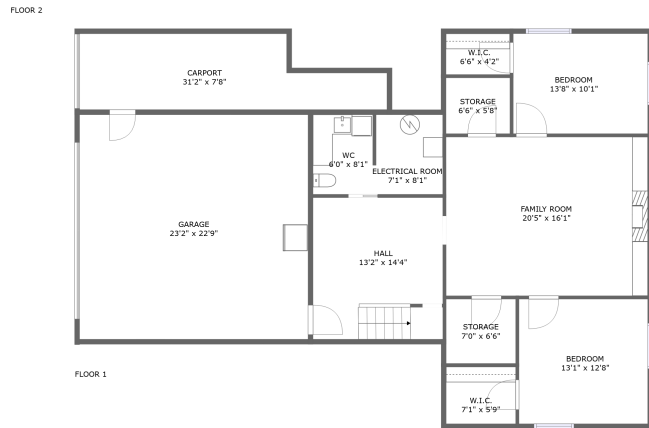
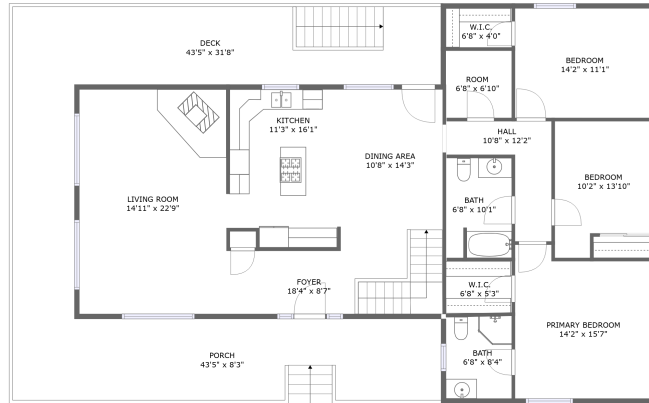
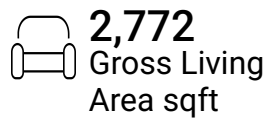
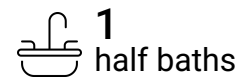


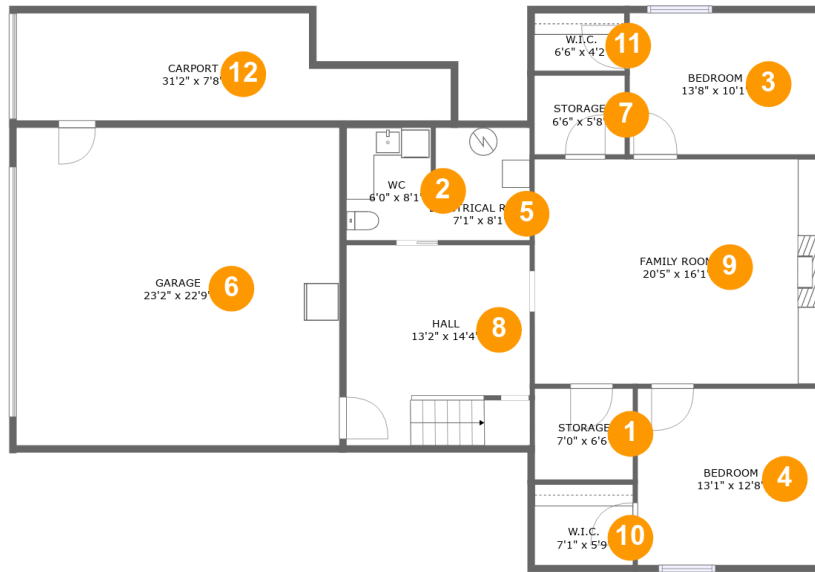
# 1493 West Hoot Owl Road, Inkom, Bannock County, Idaho, United States, 83245



## Property Summary



# 1493 West Hoot Owl Road, Inkom, Bannock County, Idaho, United States, 83245



## Room Dimensions

Floor 1

Total sqft: 1981

Living area: 988

#	Room name	Dimensions	Area (sqft)	Counted as Living Area
1	Storage	7'0" x 6'6"	46 sq. ft	No
2	Wc	6'0" x 8'1"	49 sq. ft	No
3	Bedroom	13'8" x 10'1"	138 sq. ft	Yes
4	Bedroom	13'1" x 12'8"	165 sq. ft	Yes
5	Electrical Room	7'1" x 8'1"	56 sq. ft	No
6	Garage	23'2" x 22'9"	528 sq. ft	No
7	Storage	6'6" x 5'8"	37 sq. ft	No
8	Hall	13'2" x 14'4"	188 sq. ft	Yes
9	Family Room	20'5" x 16'1"	330 sq. ft	Yes
10	W.i.c.	7'1" x 5'9"	41 sq. ft	Yes
11	W.i.c.	6'6" x 4'2"	27 sq. ft	Yes

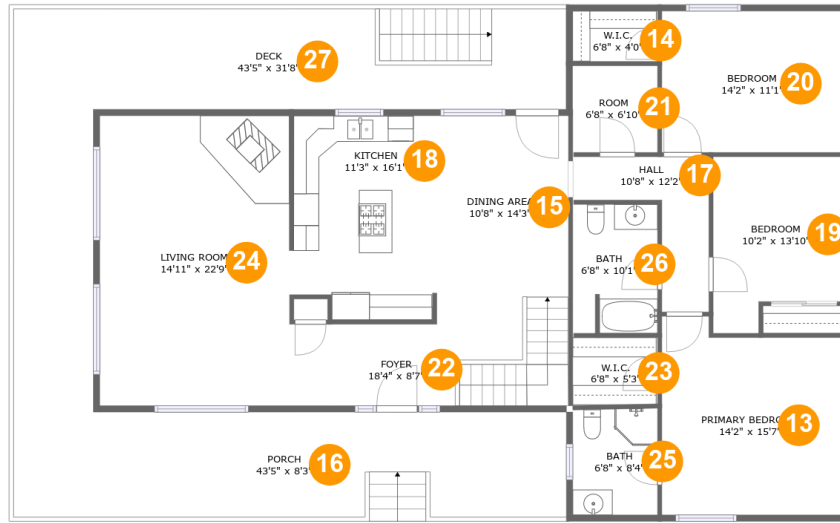
Scan captured on Tue, 06 Aug 2024 19:06:37 GMT

Information is calculated by CubiCasa technology; deemed highly reliable but not guaranteed.

**1493 West Hoot Owl Road, Inkom, Bannock  
County, Idaho, United States, 83245**

#	Room name	Dimensions	Area (sqft)	Counted as Living Area
12	Carport	31'2" x 7'8"	201 sq. ft	No

# 1493 West Hoot Owl Road, Inkom, Bannock County, Idaho, United States, 83245



## Room Dimensions

Floor 2

Total sqft: 2630

Living area: 1784

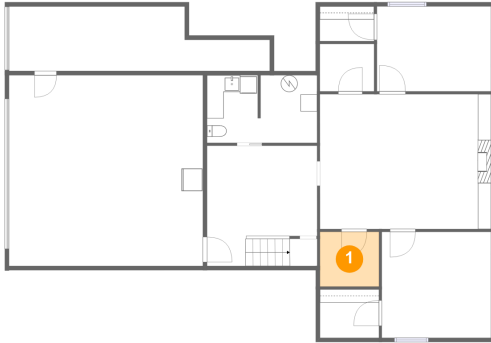
#	Room name	Dimensions	Area (sqft)	Counted as Living Area
13	Primary Bedroom	14'2" x 15'7"	204 sq. ft	Yes
14	W.i.c.	6'8" x 4'0"	26 sq. ft	Yes
15	Dining Area	10'8" x 14'3"	152 sq. ft	Yes
16	Porch	43'5" x 8'3"	358 sq. ft	No
17	Hall	10'8" x 12'2"	69 sq. ft	Yes
18	Kitchen	11'3" x 16'1"	177 sq. ft	Yes
19	Bedroom	10'2" x 13'10"	124 sq. ft	Yes
20	Bedroom	14'2" x 11'1"	158 sq. ft	Yes
21	Room	6'8" x 6'10"	46 sq. ft	Yes
22	Foyer	18'4" x 8'7"	163 sq. ft	Yes
23	W.i.c.	6'8" x 5'3"	35 sq. ft	Yes

**1493 West Hoot Owl Road, Inkom, Bannock  
County, Idaho, United States, 83245**

#	Room name	Dimensions	Area (sqft)	Counted as Living Area
24	Living Room	14'11" x 22'9"	340 sq. ft	Yes
25	Bath	6'8" x 8'4"	55 sq. ft	Yes
26	Bath	6'8" x 10'1"	67 sq. ft	Yes
27	Deck	43'5" x 31'8"	488 sq. ft	No

# 1493 West Hoot Owl Road, Inkom, Bannock County, Idaho, United States, 83245

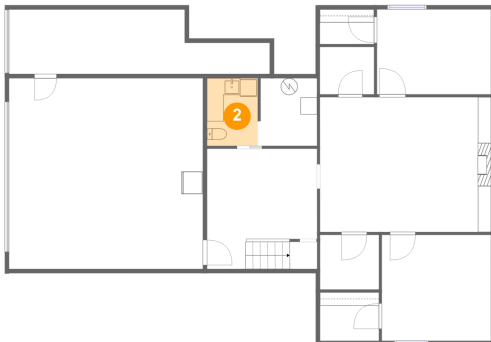
## 1 Floor 1 - Storage



Dimensions: 7'0" x 6'6"  
Area: 46 sq. ft  
Counted as Living Area: No

Heated: No  
Finished: No  
Enclosed: No  
Contiguous: Yes  
Permitted: Yes  
Wet Space: No  
Addition: No  
Conversion: No

## 2 Floor 1 - Wc



Dimensions: 6'0" x 8'1"  
Area: 49 sq. ft  
Counted as Living Area: No

Heated: Yes  
Finished: Yes  
Enclosed: Yes  
Contiguous: Yes  
Permitted: Yes  
Wet Space: Yes  
Addition: No  
Conversion: No

# 1493 West Hoot Owl Road, Inkom, Bannock County, Idaho, United States, 83245

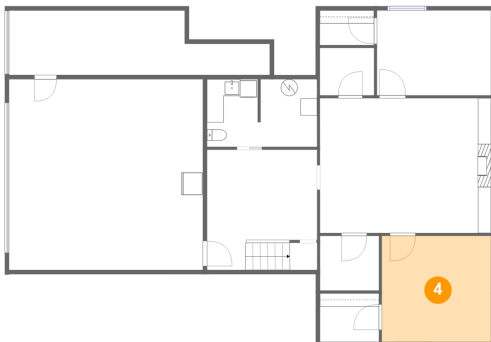
## 3 Floor 1 - Bedroom



Dimensions: 13'8" x 10'1"  
Area: 138 sq. ft  
Counted as Living Area:  
Yes

Heated: Yes  
Finished: Yes  
Enclosed: Yes  
Contiguous:  
Yes  
Permitted: Yes  
Wet Space: No  
Addition: No  
Conversion: No

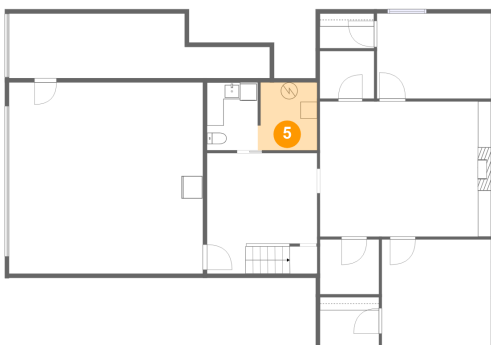
## 4 Floor 1 - Bedroom



Dimensions: 13'1" x 12'8"  
Area: 165 sq. ft  
Counted as Living Area:  
Yes

Heated: Yes  
Finished: Yes  
Enclosed: Yes  
Contiguous:  
Yes  
Permitted: Yes  
Wet Space: No  
Addition: No  
Conversion: No

## 5 Floor 1 - Electrical Room

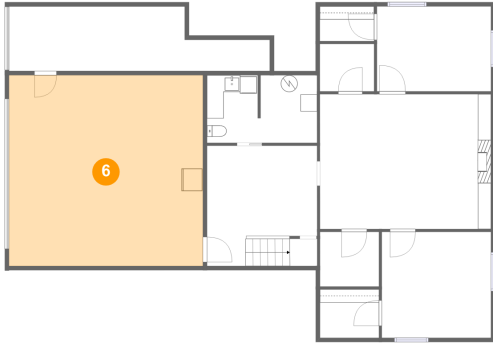


Dimensions: 7'1" x 8'1"  
Area: 56 sq. ft  
Counted as Living Area: No

Heated: No  
Finished: No  
Enclosed: Yes  
Contiguous: Yes  
Permitted: Yes  
Wet Space: No  
Addition: No  
Conversion: No

# 1493 West Hoot Owl Road, Inkom, Bannock County, Idaho, United States, 83245

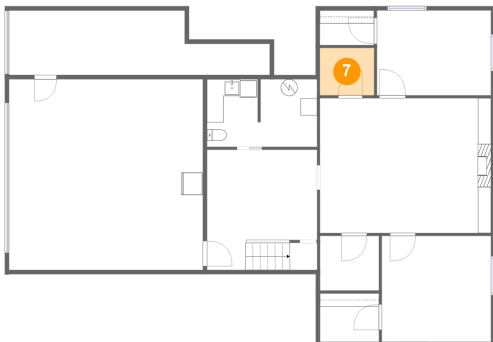
## 6 Floor 1 - Garage



Dimensions: 23'2" x 22'9"  
Area: 528 sq. ft  
Counted as Living Area: No

Heated: No  
Finished: No  
Enclosed: Yes  
Contiguous: Yes  
Permitted: Yes  
Wet Space: No  
Addition: No  
Conversion: No

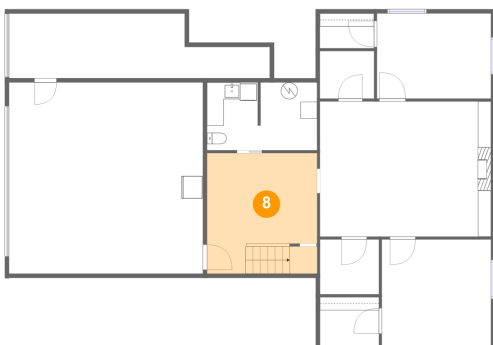
## 7 Floor 1 - Storage



Dimensions: 6'6" x 5'8"  
Area: 37 sq. ft  
Counted as Living Area: No

Heated: No  
Finished: No  
Enclosed: No  
Contiguous: Yes  
Permitted: Yes  
Wet Space: No  
Addition: No  
Conversion: No

## 8 Floor 1 - Hall



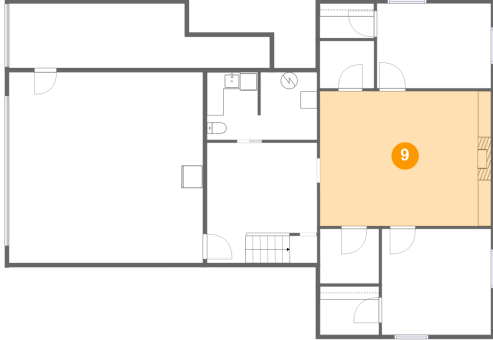
Dimensions: 13'2" x 14'4"  
Area: 188 sq. ft  
Counted as Living Area: Yes

Heated: Yes  
Finished: Yes  
Enclosed: Yes  
Contiguous: Yes  
Permitted: Yes  
Wet Space: No  
Addition: No  
Conversion: No



# 1493 West Hoot Owl Road, Inkom, Bannock County, Idaho, United States, 83245

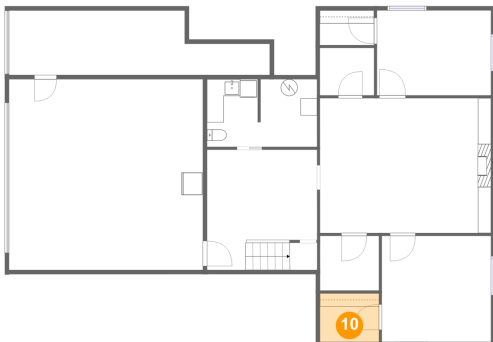
## 9 Floor 1 - Family Room



Dimensions: 20'5" x 16'1"  
Area: 330 sq. ft  
Counted as Living Area:  
Yes

Heated: Yes  
Finished: Yes  
Enclosed: Yes  
Contiguous:  
Yes  
Permitted: Yes  
Wet Space: No  
Addition: No  
Conversion: No

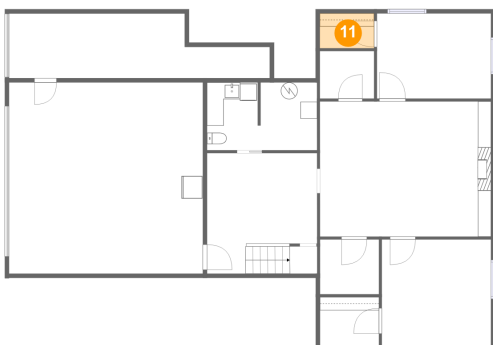
## 10 Floor 1 - W.i.c.



Dimensions: 7'1" x 5'9"  
Area: 41 sq. ft  
Counted as Living Area:  
Yes

Heated: Yes  
Finished: Yes  
Enclosed: Yes  
Contiguous:  
Yes  
Permitted: Yes  
Wet Space: No  
Addition: No  
Conversion: No

## 11 Floor 1 - W.i.c.

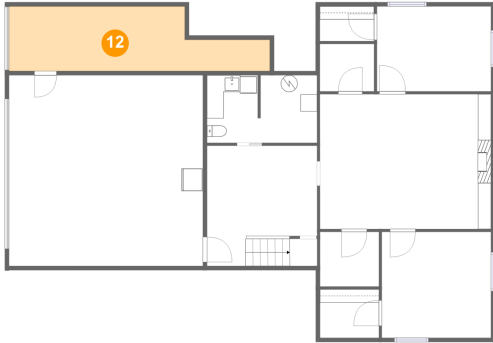


Dimensions: 6'6" x 4'2"  
Area: 27 sq. ft  
Counted as Living Area:  
Yes

Heated: Yes  
Finished: Yes  
Enclosed: Yes  
Contiguous:  
Yes  
Permitted: Yes  
Wet Space: No  
Addition: No  
Conversion: No

# 1493 West Hoot Owl Road, Inkom, Bannock County, Idaho, United States, 83245

## 12 Floor 1 - Carport



Dimensions: 31'2" x 7'8"  
Area: 201 sq. ft  
Counted as Living Area: No

Heated: No  
Finished: Yes  
Enclosed: No  
Contiguous: No  
Permitted: Yes  
Wet Space: No  
Addition: No  
Conversion: No

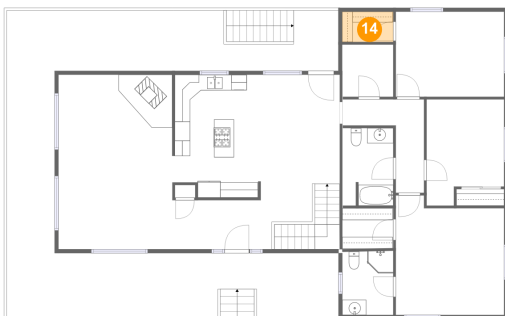
## 13 Floor 2 - Primary Bedroom



Dimensions: 14'2" x 15'7"  
Area: 204 sq. ft  
Counted as Living Area: Yes

Heated: Yes  
Finished: Yes  
Enclosed: Yes  
Contiguous: Yes  
Permitted: Yes  
Wet Space: No  
Addition: No  
Conversion: No

## 14 Floor 2 - W.i.c.



Dimensions: 6'8" x 4'0"  
Area: 26 sq. ft  
Counted as Living Area: Yes

Heated: Yes  
Finished: Yes  
Enclosed: Yes  
Contiguous: Yes  
Permitted: Yes  
Wet Space: No  
Addition: No  
Conversion: No

# 1493 West Hoot Owl Road, Inkom, Bannock County, Idaho, United States, 83245

## 15 Floor 2 - Dining Area



Dimensions: 10'8" x 14'3"  
Area: 152 sq. ft  
Counted as Living Area:  
Yes

Heated: Yes  
Finished: Yes  
Enclosed: Yes  
Contiguous:  
Yes  
Permitted: Yes  
Wet Space: No  
Addition: No  
Conversion: No

## 16 Floor 2 - Porch



Dimensions: 43'5" x 8'3"  
Area: 358 sq. ft  
Counted as Living Area: No

Heated: No  
Finished: Yes  
Enclosed: No  
Contiguous: Yes  
Permitted: Yes  
Wet Space: No  
Addition: No  
Conversion: No

## 17 Floor 2 - Hall



Dimensions: 10'8" x 12'2"  
Area: 69 sq. ft  
Counted as Living Area:  
Yes

Heated: Yes  
Finished: Yes  
Enclosed: Yes  
Contiguous:  
Yes  
Permitted: Yes  
Wet Space: No  
Addition: No  
Conversion: No

# 1493 West Hoot Owl Road, Inkom, Bannock County, Idaho, United States, 83245

## 18 Floor 2 - Kitchen



Dimensions: 11'3" x 16'1"  
Area: 177 sq. ft  
Counted as Living Area:  
Yes

Heated: Yes  
Finished: Yes  
Enclosed: Yes  
Contiguous:  
Yes  
Permitted: Yes  
Wet Space: No  
Addition: No  
Conversion: No

## 19 Floor 2 - Bedroom



Dimensions: 10'2" x 13'10"  
Area: 124 sq. ft  
Counted as Living Area:  
Yes

Heated: Yes  
Finished: Yes  
Enclosed: Yes  
Contiguous:  
Yes  
Permitted: Yes  
Wet Space: No  
Addition: No  
Conversion: No

## 20 Floor 2 - Bedroom



Dimensions: 14'2" x 11'1"  
Area: 158 sq. ft  
Counted as Living Area:  
Yes

Heated: Yes  
Finished: Yes  
Enclosed: Yes  
Contiguous:  
Yes  
Permitted: Yes  
Wet Space: No  
Addition: No  
Conversion: No

# 1493 West Hoot Owl Road, Inkom, Bannock County, Idaho, United States, 83245

## 21 Floor 2 - Room



Dimensions: 6'8" x 6'10"  
Area: 46 sq. ft  
Counted as Living Area:  
Yes

Heated: Yes  
Finished: Yes  
Enclosed: Yes  
Contiguous:  
Yes  
Permitted: Yes  
Wet Space: No  
Addition: No  
Conversion: No

## 22 Floor 2 - Foyer



Dimensions: 18'4" x 8'7"  
Area: 163 sq. ft  
Counted as Living Area:  
Yes

Heated: Yes  
Finished: Yes  
Enclosed: Yes  
Contiguous:  
Yes  
Permitted: Yes  
Wet Space: No  
Addition: No  
Conversion: No

## 23 Floor 2 - W.i.c.



Dimensions: 6'8" x 5'3"  
Area: 35 sq. ft  
Counted as Living Area:  
Yes

Heated: Yes  
Finished: Yes  
Enclosed: Yes  
Contiguous:  
Yes  
Permitted: Yes  
Wet Space: No  
Addition: No  
Conversion: No

# 1493 West Hoot Owl Road, Inkom, Bannock County, Idaho, United States, 83245

## 24 Floor 2 - Living Room



Dimensions: 14'11" x 22'9"  
Area: 340 sq. ft  
Counted as Living Area:  
Yes

Heated: Yes  
Finished: Yes  
Enclosed: Yes  
Contiguous:  
Yes  
Permitted: Yes  
Wet Space: No  
Addition: No  
Conversion: No

## 25 Floor 2 - Bath



Dimensions: 6'8" x 8'4"  
Area: 55 sq. ft  
Counted as Living Area:  
Yes

Heated: Yes  
Finished: Yes  
Enclosed: Yes  
Contiguous:  
Yes  
Permitted: Yes  
Wet Space: Yes  
Addition: No  
Conversion: No

## 26 Floor 2 - Bath



Dimensions: 6'8" x 10'1"  
Area: 67 sq. ft  
Counted as Living Area:  
Yes

Heated: Yes  
Finished: Yes  
Enclosed: Yes  
Contiguous:  
Yes  
Permitted: Yes  
Wet Space: Yes  
Addition: No  
Conversion: No

# 1493 West Hoot Owl Road, Inkom, Bannock County, Idaho, United States, 83245

## 27 Floor 2 - Deck



Dimensions: 43'5" x 31'8"  
Area: 488 sq. ft  
Counted as Living Area: No

Heated: No  
Finished: Yes  
Enclosed: No  
Contiguous: Yes  
Permitted: Yes  
Wet Space: No  
Addition: No  
Conversion: No