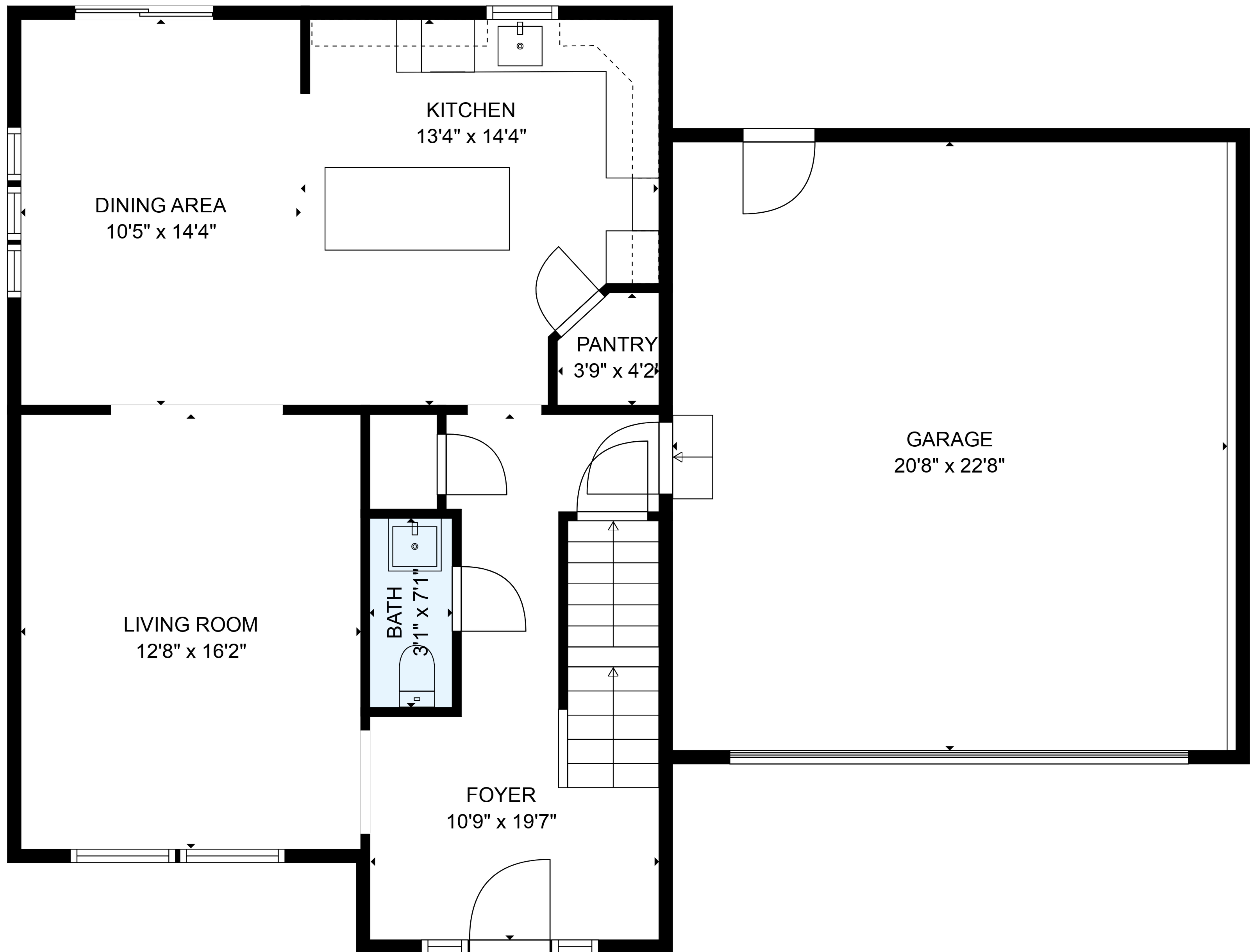


BASEMENT
23'9" x 34'3"

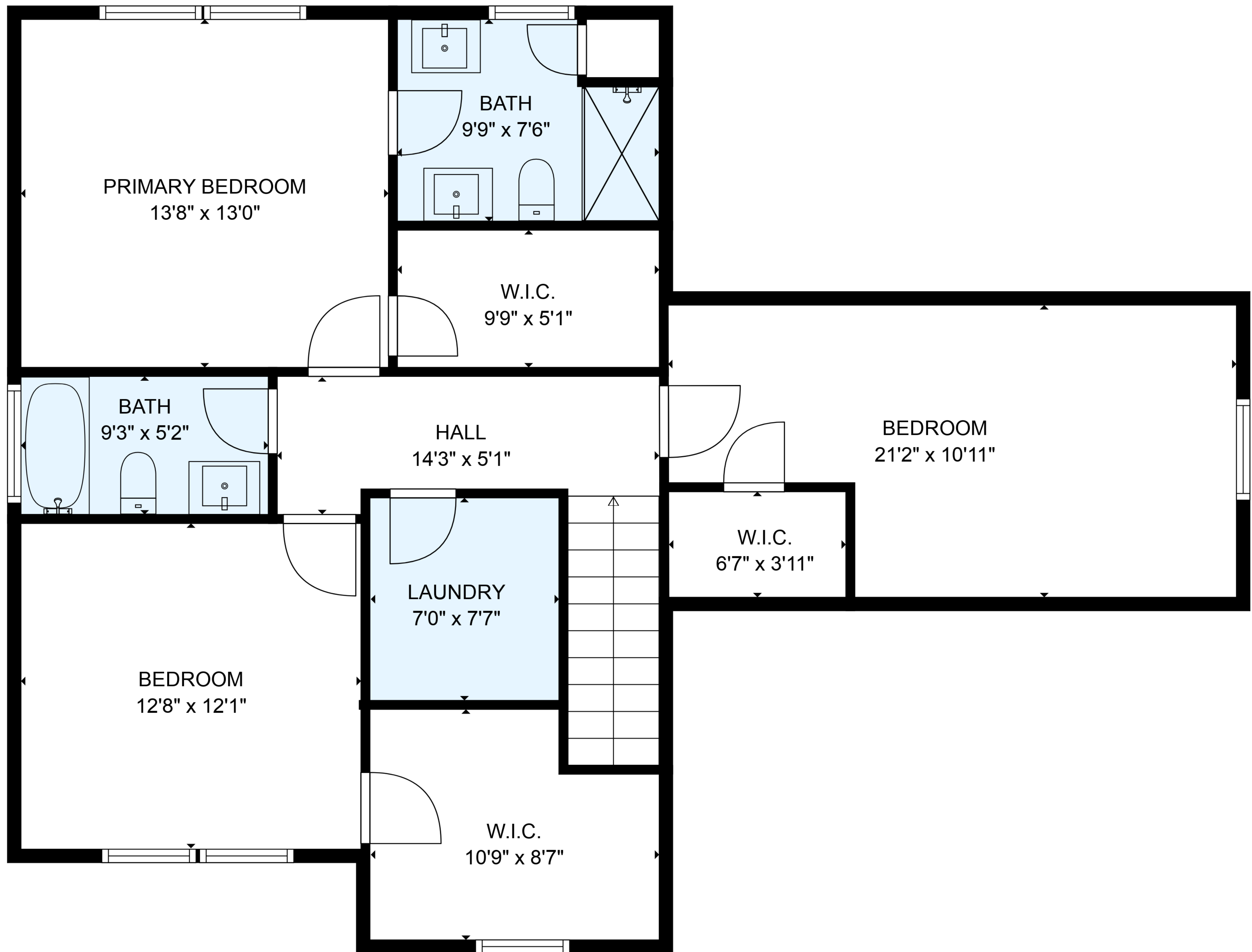
TOTAL: 1784 sq. ft
BELOW GROUND: 15 sq. ft, FLOOR 2: 771 sq. ft, FLOOR 3: 998 sq. ft
EXCLUDED AREAS: BASEMENT: 756 sq. ft, GARAGE: 476 sq. ft
WALLS: 232 sq. ft

MEASUREMENTS ARE DEEMED RELIABLE BUT ARE NOT GUARANTEED.



TOTAL: 1784 sq. ft
BELOW GROUND: 15 sq. ft, FLOOR 2: 771 sq. ft, FLOOR 3: 998 sq. ft
EXCLUDED AREAS: BASEMENT: 756 sq. ft, GARAGE: 476 sq. ft
WALLS: 232 sq. ft

MEASUREMENTS ARE DEEMED RELIABLE BUT ARE NOT GUARANTEED.



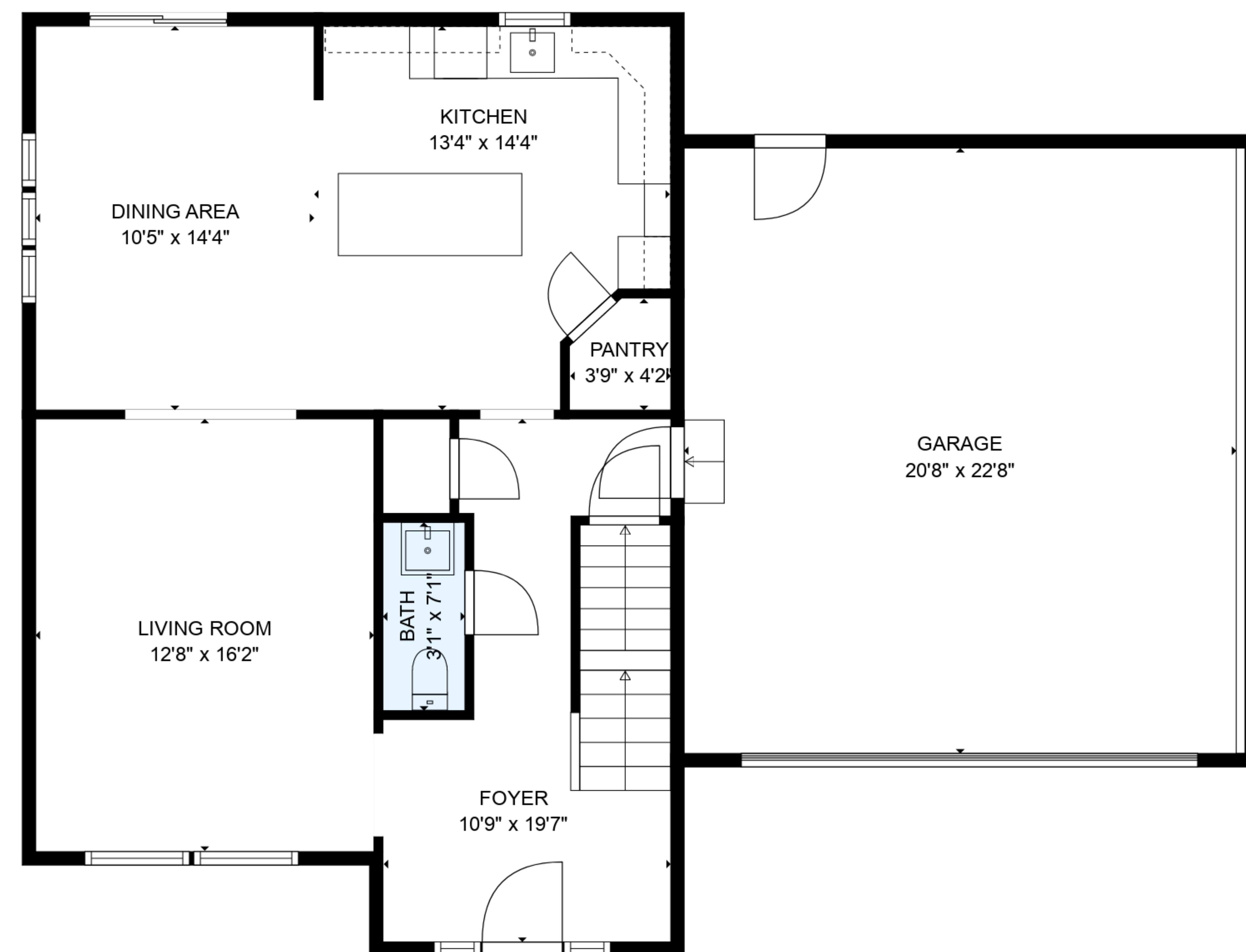
TOTAL: 1784 sq. ft

BELOW GROUND: 15 sq. ft, FLOOR 2: 771 sq. ft, FLOOR 3: 998 sq. ft

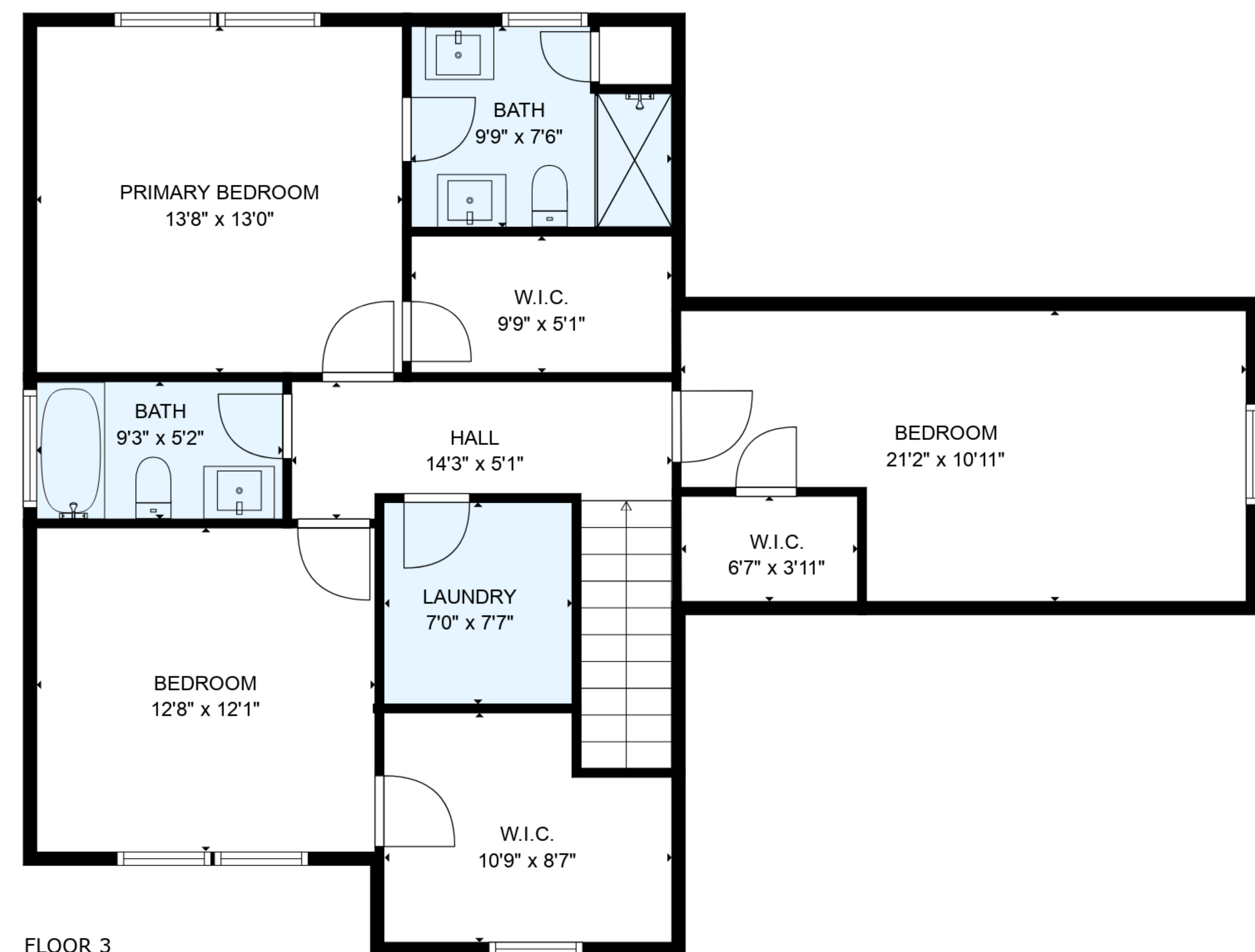
EXCLUDED AREAS: BASEMENT: 756 sq. ft, GARAGE: 476 sq. ft

WALLS: 232 sq. ft

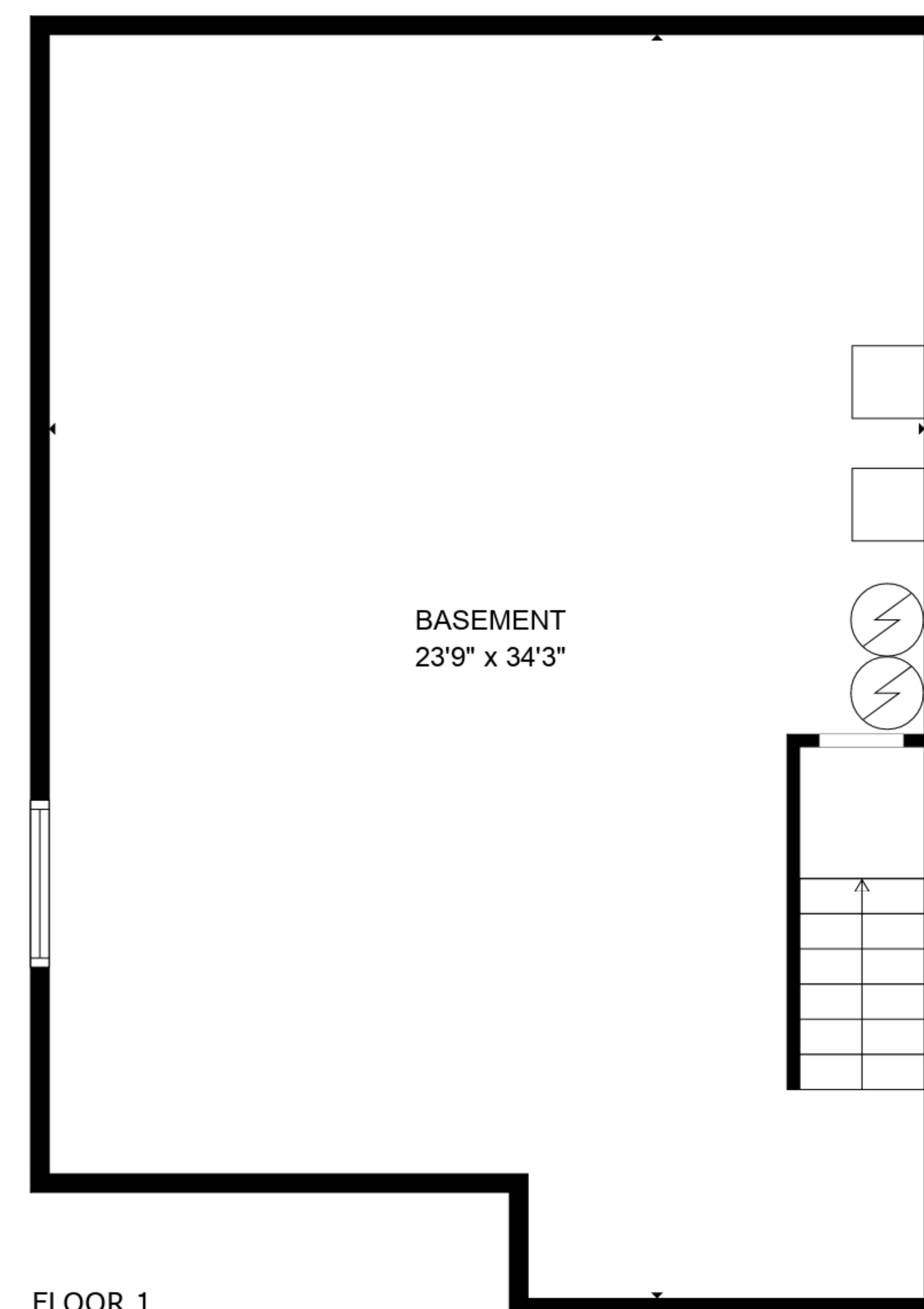
MEASUREMENTS ARE DEEMED RELIABLE BUT ARE NOT GUARANTEED.



FLOOR 2



FLOOR 3



FLOOR 1

TOTAL: 1784 sq. ft
 BELOW GROUND: 15 sq. ft, FLOOR 2: 771 sq. ft, FLOOR 3: 998 sq. ft
 EXCLUDED AREAS: BASEMENT: 756 sq. ft, GARAGE: 476 sq. ft
 WALLS: 232 sq. ft

MEASUREMENTS ARE DEEMED RELIABLE BUT ARE NOT GUARANTEED.