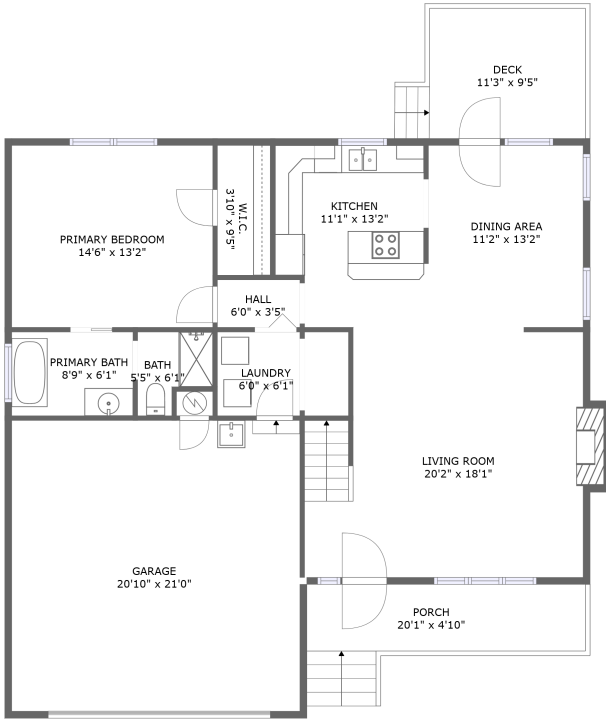
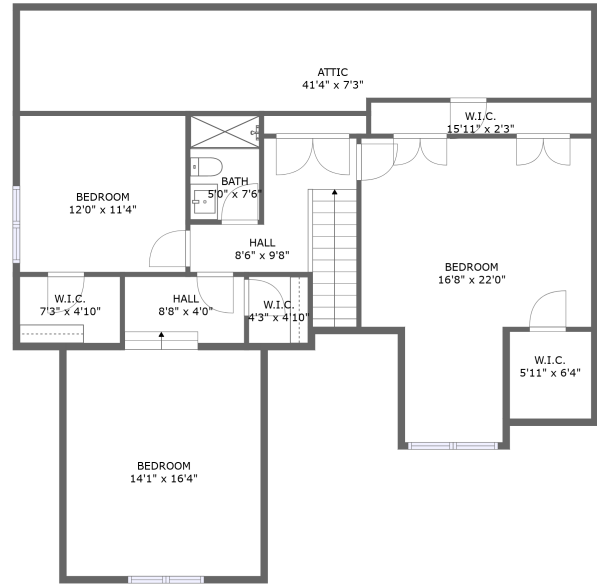


730 South Battery Drive, Mountain View, Hollins, Roanoke County, Virginia, United States, 24019



FLOOR 1



FLOOR 2

Property Summary



2 floors



4 bedrooms



2 bathrooms



3,218 total sqft

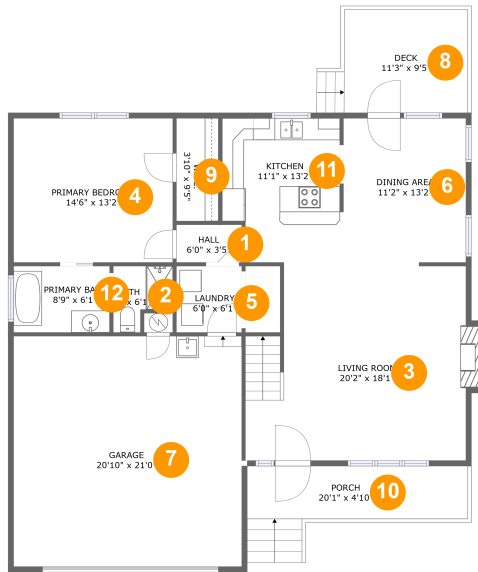


1 garages



2,064 Gross Living Area sqft

730 South Battery Drive, Mountain View, Hollins, Roanoke County, Virginia, United States, 24019



Room Dimensions

Floor 1

Total sqft: 1817

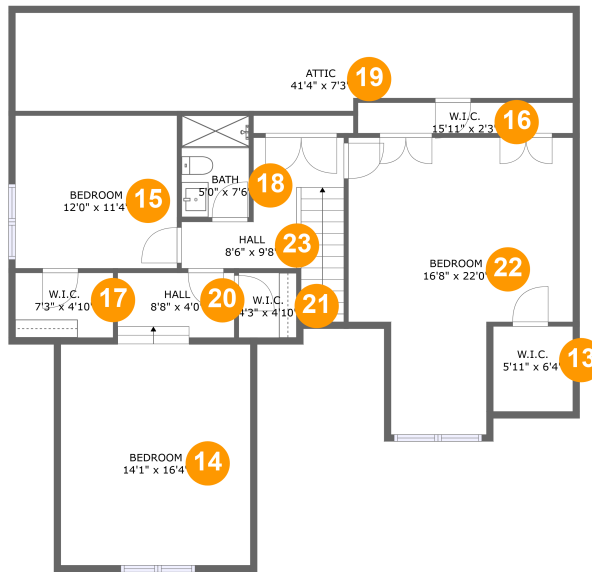
Living area: 1106

#	Room name	Dimensions	Area (sqft)	Counted as Living Area
1	Hall	6'0" x 3'5"	21 sq. ft	Yes
2	Bath	5'5" x 6'1"	27 sq. ft	Yes
3	Living Room	20'2" x 18'1"	346 sq. ft	Yes
4	Primary Bedroom	14'6" x 13'2"	191 sq. ft	Yes
5	Laundry	6'0" x 6'1"	36 sq. ft	Yes
6	Dining Area	11'2" x 13'2"	147 sq. ft	Yes
7	Garage	20'10" x 21'0"	438 sq. ft	No
8	Deck	11'3" x 9'5"	115 sq. ft	No
9	W.i.c.	3'10" x 9'5"	36 sq. ft	Yes
10	Porch	20'1" x 4'10"	117 sq. ft	No
11	Kitchen	11'1" x 13'2"	135 sq. ft	Yes

**730 South Battery Drive, Mountain View, Hollins,
Roanoke County, Virginia, United States, 24019**

#	Room name	Dimensions	Area (sqft)	Counted as Living Area
12	Primary Bath	8'9" x 6'1"	53 sq. ft	Yes

730 South Battery Drive, Mountain View, Hollins, Roanoke County, Virginia, United States, 24019



Room Dimensions

Floor 2

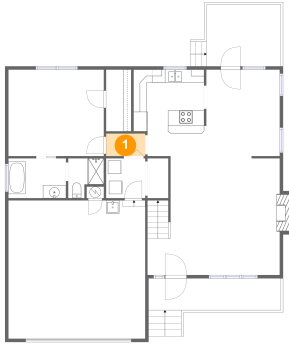
Total sqft: 1401

Living area: 958

#	Room name	Dimensions	Area (sqft)	Counted as Living Area
13	W.i.c.	5'11" x 6'4"	24 sq. ft	Yes
14	Bedroom	14'1" x 16'4"	142 sq. ft	Yes
15	Bedroom	12'0" x 11'4"	135 sq. ft	Yes
16	W.i.c.	15'11" x 2'3"	36 sq. ft	Yes
17	W.i.c.	7'3" x 4'10"	35 sq. ft	Yes
18	Bath	5'0" x 7'6"	38 sq. ft	Yes
19	Attic	41'4" x 7'3"	70 sq. ft	No
20	Hall	8'8" x 4'0"	41 sq. ft	Yes
21	W.i.c.	4'3" x 4'10"	21 sq. ft	Yes
22	Bedroom	16'8" x 22'0"	286 sq. ft	Yes
23	Hall	8'6" x 9'8"	96 sq. ft	Yes

730 South Battery Drive, Mountain View, Hollins, Roanoke County, Virginia, United States, 24019

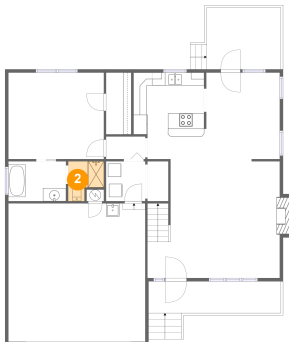
1 Floor 1 - Hall



Dimensions: 6'0" x 3'5"
Area: 21 sq. ft
Counted as Living Area:
Yes

Heated: Yes
Finished: Yes
Enclosed: Yes
Contiguous:
Yes
Permitted: Yes
Wet Space: No
Addition: No
Conversion: No

2 Floor 1 - Bath

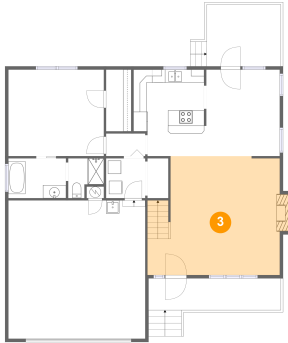


Dimensions: 5'5" x 6'1"
Area: 27 sq. ft
Counted as Living Area:
Yes

Heated: Yes
Finished: Yes
Enclosed: Yes
Contiguous:
Yes
Permitted: Yes
Wet Space: Yes
Addition: No
Conversion: No

730 South Battery Drive, Mountain View, Hollins, Roanoke County, Virginia, United States, 24019

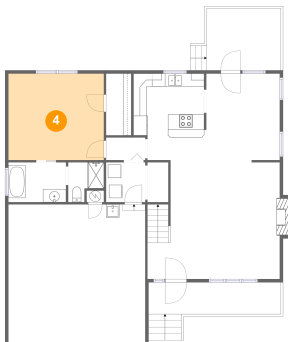
3 Floor 1 - Living Room



Dimensions: 20'2" x 18'1"
Area: 346 sq. ft
Counted as Living Area:
Yes

Heated: Yes
Finished: Yes
Enclosed: Yes
Contiguous:
Yes
Permitted: Yes
Wet Space: No
Addition: No
Conversion: No

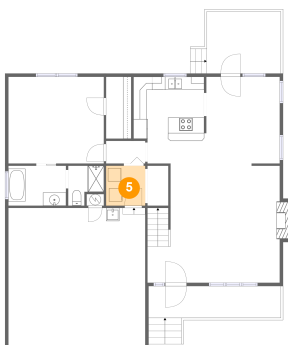
4 Floor 1 - Primary Bedroom



Dimensions: 14'6" x 13'2"
Area: 191 sq. ft
Counted as Living Area:
Yes

Heated: Yes
Finished: Yes
Enclosed: Yes
Contiguous:
Yes
Permitted: Yes
Wet Space: No
Addition: No
Conversion: No

5 Floor 1 - Laundry

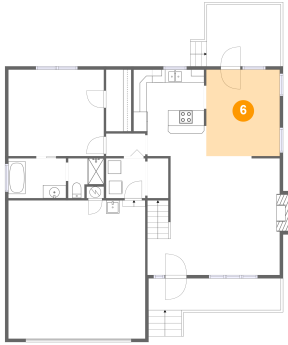


Dimensions: 6'0" x 6'1"
Area: 36 sq. ft
Counted as Living Area:
Yes

Heated: Yes
Finished: Yes
Enclosed: Yes
Contiguous:
Yes
Permitted: Yes
Wet Space: No
Addition: No
Conversion: No

730 South Battery Drive, Mountain View, Hollins, Roanoke County, Virginia, United States, 24019

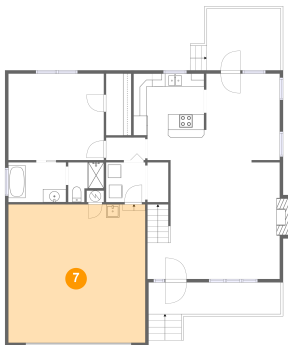
6 Floor 1 - Dining Area



Dimensions: 11'2" x 13'2"
Area: 147 sq. ft
Counted as Living Area:
Yes

Heated: Yes
Finished: Yes
Enclosed: Yes
Contiguous:
Yes
Permitted: Yes
Wet Space: No
Addition: No
Conversion: No

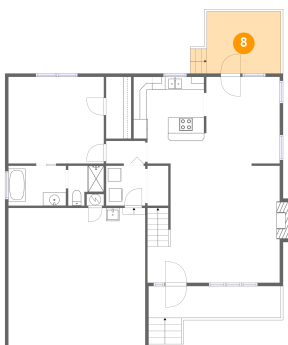
7 Floor 1 - Garage



Dimensions: 20'10" x 21'0"
Area: 438 sq. ft
Counted as Living Area: No

Heated: No
Finished: No
Enclosed: Yes
Contiguous: Yes
Permitted: Yes
Wet Space: No
Addition: No
Conversion: No

8 Floor 1 - Deck

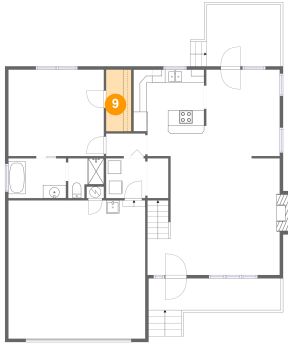


Dimensions: 11'3" x 9'5"
Area: 115 sq. ft
Counted as Living Area: No

Heated: No
Finished: Yes
Enclosed: No
Contiguous: Yes
Permitted: Yes
Wet Space: No
Addition: No
Conversion: No

730 South Battery Drive, Mountain View, Hollins, Roanoke County, Virginia, United States, 24019

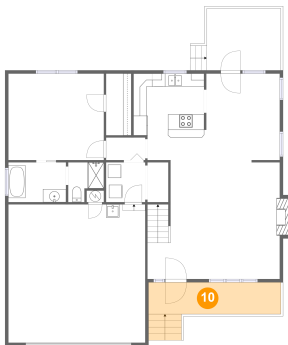
9 Floor 1 - W.i.c.



Dimensions: 3'10" x 9'5"
Area: 36 sq. ft
Counted as Living Area:
Yes

Heated: Yes
Finished: Yes
Enclosed: Yes
Contiguous:
Yes
Permitted: Yes
Wet Space: No
Addition: No
Conversion: No

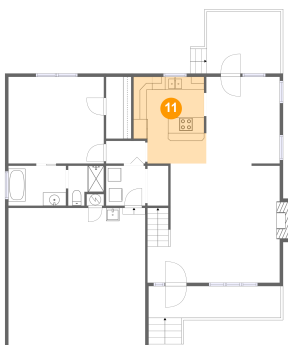
10 Floor 1 - Porch



Dimensions: 20'1" x 4'10"
Area: 117 sq. ft
Counted as Living Area: No

Heated: No
Finished: Yes
Enclosed: No
Contiguous: Yes
Permitted: Yes
Wet Space: No
Addition: No
Conversion: No

11 Floor 1 - Kitchen

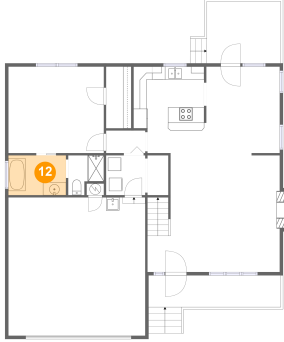


Dimensions: 11'1" x 13'2"
Area: 135 sq. ft
Counted as Living Area:
Yes

Heated: Yes
Finished: Yes
Enclosed: Yes
Contiguous:
Yes
Permitted: Yes
Wet Space: No
Addition: No
Conversion: No

**730 South Battery Drive, Mountain View, Hollins,
Roanoke County, Virginia, United States, 24019**

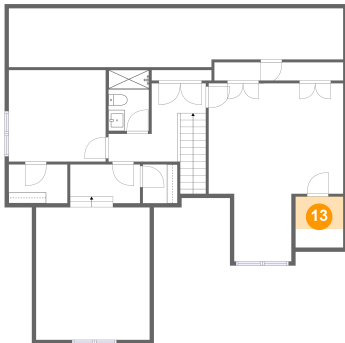
12 Floor 1 - Primary Bath



Dimensions: 8'9" x 6'1"
Area: 53 sq. ft
Counted as Living Area:
Yes

Heated: Yes
Finished: Yes
Enclosed: Yes
Contiguous:
Yes
Permitted: Yes
Wet Space: Yes
Addition: No
Conversion: No

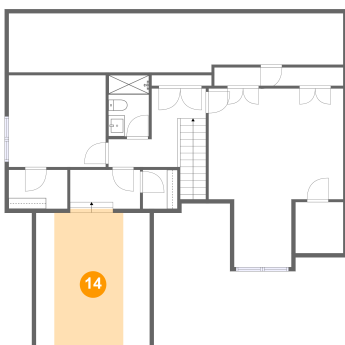
13 Floor 2 - W.i.c.



Dimensions: 5'11" x 6'4"
Area: 24 sq. ft
Counted as Living Area:
Yes

Heated: Yes
Finished: Yes
Enclosed: Yes
Contiguous:
Yes
Permitted: Yes
Wet Space: No
Addition: No
Conversion: No

14 Floor 2 - Bedroom

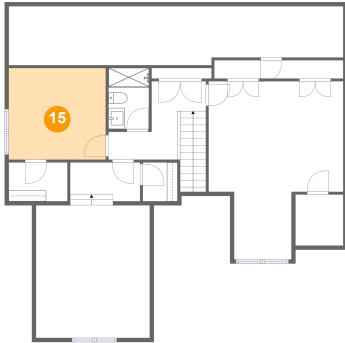


Dimensions: 14'1" x 16'4"
Area: 142 sq. ft
Counted as Living Area:
Yes

Heated: Yes
Finished: Yes
Enclosed: Yes
Contiguous:
Yes
Permitted: Yes
Wet Space: No
Addition: No
Conversion: No

730 South Battery Drive, Mountain View, Hollins, Roanoke County, Virginia, United States, 24019

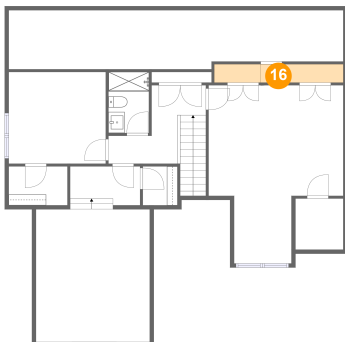
15 Floor 2 - Bedroom



Dimensions: 12'0" x 11'4"
Area: 135 sq. ft
Counted as Living Area:
Yes

Heated: Yes
Finished: Yes
Enclosed: Yes
Contiguous:
Yes
Permitted: Yes
Wet Space: No
Addition: No
Conversion: No

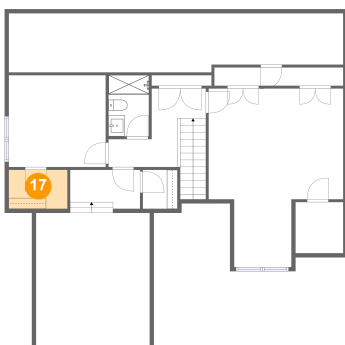
16 Floor 2 - W.i.c.



Dimensions: 15'11" x 2'3"
Area: 36 sq. ft
Counted as Living Area:
Yes

Heated: Yes
Finished: Yes
Enclosed: Yes
Contiguous:
Yes
Permitted: Yes
Wet Space: No
Addition: No
Conversion: No

17 Floor 2 - W.i.c.

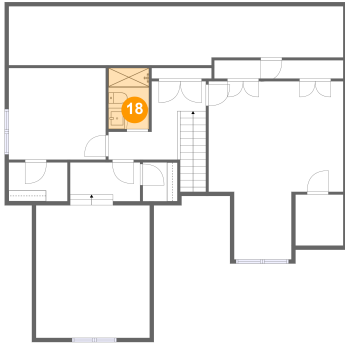


Dimensions: 7'3" x 4'10"
Area: 35 sq. ft
Counted as Living Area:
Yes

Heated: Yes
Finished: Yes
Enclosed: Yes
Contiguous:
Yes
Permitted: Yes
Wet Space: No
Addition: No
Conversion: No

730 South Battery Drive, Mountain View, Hollins, Roanoke County, Virginia, United States, 24019

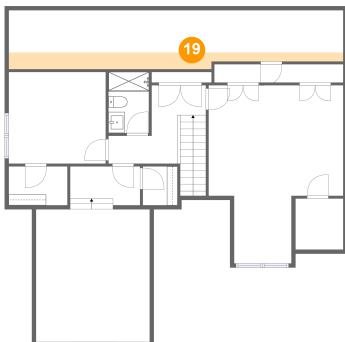
18 Floor 2 - Bath



Dimensions: 5'0" x 7'6"
Area: 38 sq. ft
Counted as Living Area:
Yes

Heated: Yes
Finished: Yes
Enclosed: Yes
Contiguous:
Yes
Permitted: Yes
Wet Space: Yes
Addition: No
Conversion: No

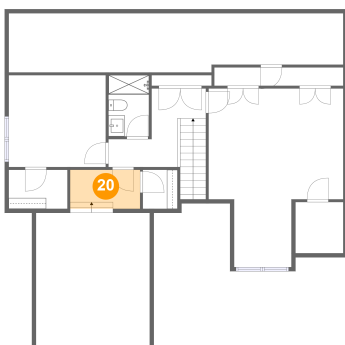
19 Floor 2 - Attic



Dimensions: 41'4" x 7'3"
Area: 70 sq. ft
Counted as Living Area: No

Heated: No
Finished: No
Enclosed: Yes
Contiguous: Yes
Permitted: Yes
Wet Space: No
Addition: No
Conversion: No

20 Floor 2 - Hall

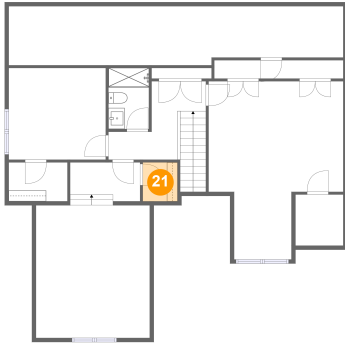


Dimensions: 8'8" x 4'0"
Area: 41 sq. ft
Counted as Living Area:
Yes

Heated: Yes
Finished: Yes
Enclosed: Yes
Contiguous:
Yes
Permitted: Yes
Wet Space: No
Addition: No
Conversion: No

730 South Battery Drive, Mountain View, Hollins, Roanoke County, Virginia, United States, 24019

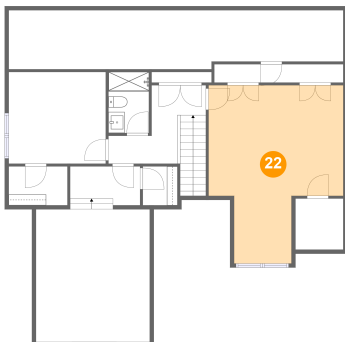
21 Floor 2 - W.i.c.



Dimensions: 4'3" x 4'10"
Area: 21 sq. ft
Counted as Living Area:
Yes

Heated: Yes
Finished: Yes
Enclosed: Yes
Contiguous:
Yes
Permitted: Yes
Wet Space: No
Addition: No
Conversion: No

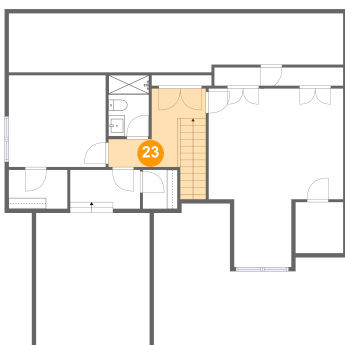
22 Floor 2 - Bedroom



Dimensions: 16'8" x 22'0"
Area: 286 sq. ft
Counted as Living Area:
Yes

Heated: Yes
Finished: Yes
Enclosed: Yes
Contiguous:
Yes
Permitted: Yes
Wet Space: No
Addition: No
Conversion: No

23 Floor 2 - Hall



Dimensions: 8'6" x 9'8"
Area: 96 sq. ft
Counted as Living Area:
Yes

Heated: Yes
Finished: Yes
Enclosed: Yes
Contiguous:
Yes
Permitted: Yes
Wet Space: No
Addition: No
Conversion: No