


# 5 Morningside Drive, Medway, Norfolk County, Massachusetts, United States, 02053



## Property summary

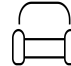
 **0** Garages

 **3** Bedrooms

 **2** Bathrooms

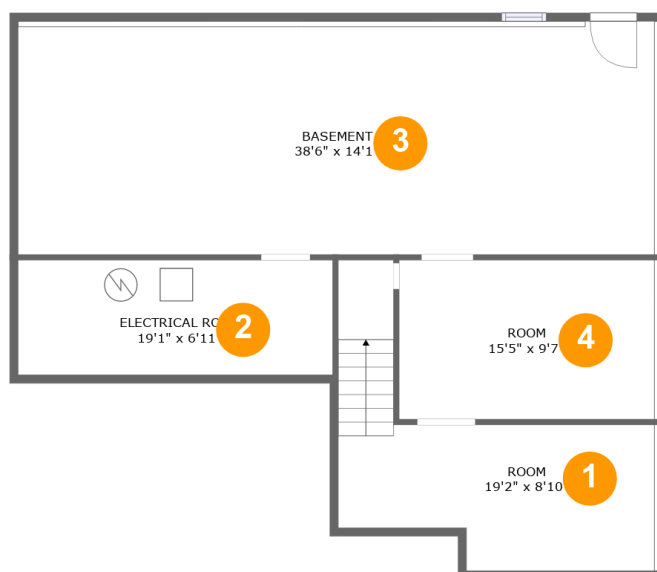
 **1** Half baths

 **3** Floors

 **2,445** Gross living area sqft

 **3,751** Total sqft

# 5 Morningside Drive, Medway, Norfolk County, Massachusetts, United States, 02053



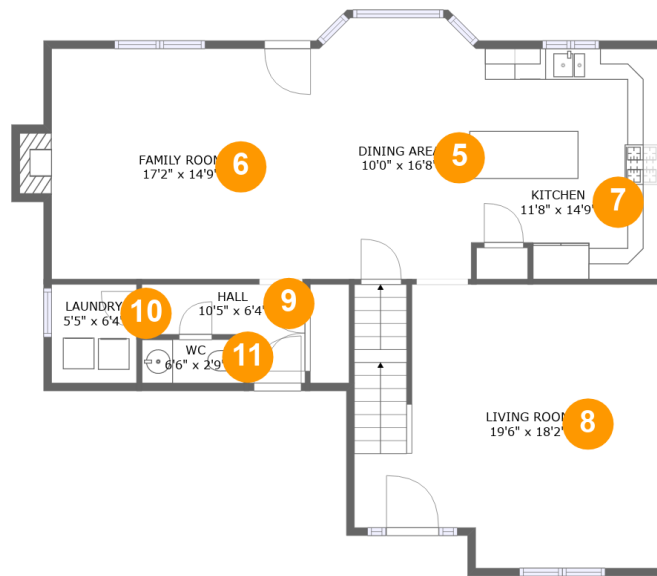
## Room dimensions

Floor 1

Total sqft: 1115 Living area: 0

#		Dimensions	sqft	Counted as living area
1	Room	19'2" x 8'10"	185 sq. ft	No
2	Room	19'1" x 6'11"	132 sq. ft	No
3	Basement	38'6" x 14'1"	548 sq. ft	No
4	Room	15'5" x 9'7"	152 sq. ft	No

# 5 Morningside Drive, Medway, Norfolk County, Massachusetts, United States, 02053



## Room dimensions

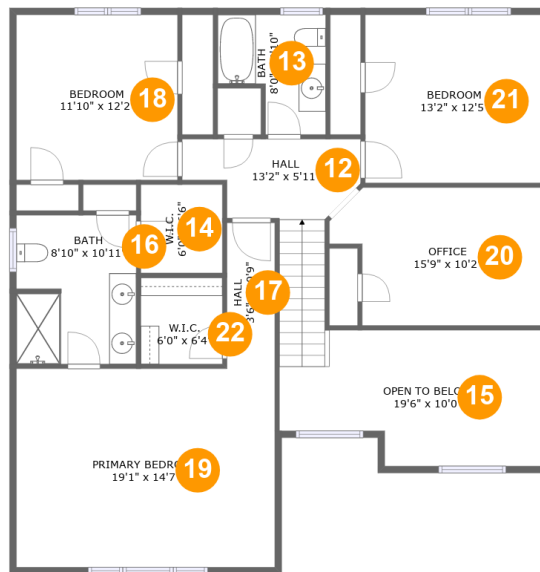
Floor 2

Total sqft: 1141

Living area: 1131

#		Dimensions	sqft	Counted as living area
5	Dining Room	10'0" x 16'8"	163 sq. ft	Yes
6	Living Room	17'2" x 14'9"	261 sq. ft	Yes
7	Kitchen	11'8" x 14'9"	164 sq. ft	Yes
8	Living Room	19'6" x 18'2"	331 sq. ft	Yes
9	Hall	10'5" x 6'4"	45 sq. ft	Yes
10	Utility	5'5" x 6'4"	34 sq. ft	Yes
11	Bath	6'6" x 2'9"	18 sq. ft	Yes

# 5 Morningside Drive, Medway, Norfolk County, Massachusetts, United States, 02053



## Room dimensions

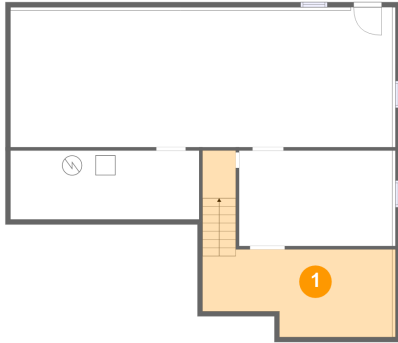
Floor 3

Total sqft: 1495 Living area: 1314

#		Dimensions	sqft	Counted as living area
12	Hall	13'2" x 5'11"	103 sq. ft	Yes
13	Bath	8'0" x 8'10"	57 sq. ft	Yes
14	Cl	6'0" x 6'6"	39 sq. ft	Yes
15	Open To Below	19'6" x 10'0"	165 sq. ft	No
16	Bath	8'10" x 10'11"	96 sq. ft	Yes
17	Hall	3'6" x 10'9"	38 sq. ft	Yes
18	Bedroom	11'10" x 12'2"	145 sq. ft	Yes
19	Bedroom	19'1" x 14'7"	279 sq. ft	Yes
20	Office	15'9" x 10'2"	143 sq. ft	Yes
21	Bedroom	13'2" x 12'5"	163 sq. ft	Yes
22	Cl	6'0" x 6'4"	38 sq. ft	Yes

# 5 Morningside Drive, Medway, Norfolk County, Massachusetts, United States, 02053

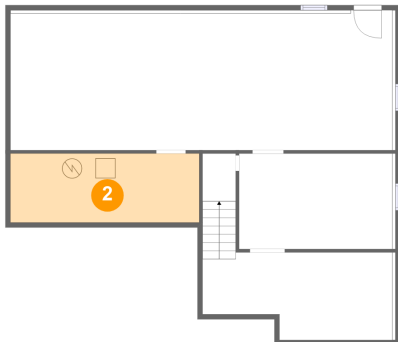
## 1 Floor 1 - Room



Dimensions: 19'2" x 8'10"  
Area: 185 sq. ft  
Counted as living area: No

Heated: Yes  
Finished: No  
Enclosed: Yes  
Contiguous: Yes  
Permitted: Yes  
Wet space: No  
Addition: No  
Conversion: No

## 2 Floor 1 - Room

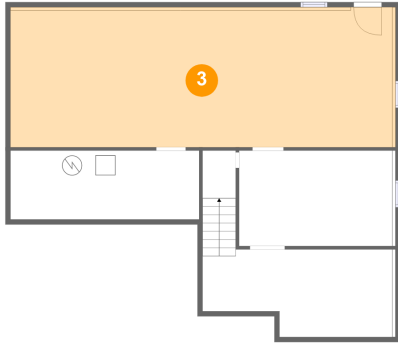


Dimensions: 19'1" x 6'11"  
Area: 132 sq. ft  
Counted as living area: No

Heated: No  
Finished: No  
Enclosed: Yes  
Contiguous: Yes  
Permitted: Yes  
Wet space: No  
Addition: No  
Conversion: No

# 5 Morningside Drive, Medway, Norfolk County, Massachusetts, United States, 02053

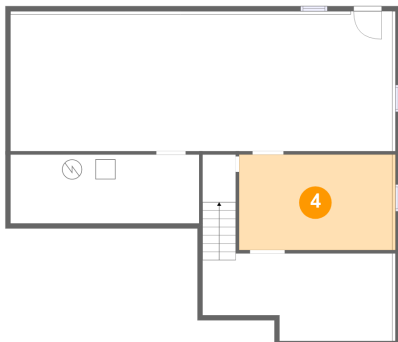
## 3 Floor 1 - Basement



Dimensions: 38'6" x 14'1"  
Area: 548 sq. ft  
Counted as living area: No

Heated: Yes  
Finished: No  
Enclosed: Yes  
Contiguous: Yes  
Permitted: Yes  
Wet space: No  
Addition: No  
Conversion: No

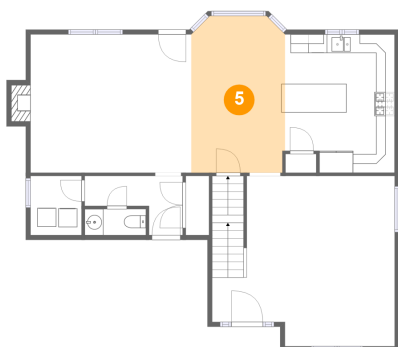
## 4 Floor 1 - Room



Dimensions: 15'5" x 9'7"  
Area: 152 sq. ft  
Counted as living area: No

Heated: Yes  
Finished: No  
Enclosed: Yes  
Contiguous: Yes  
Permitted: Yes  
Wet space: No  
Addition: No  
Conversion: No

## 5 Floor 2 - Dining Room

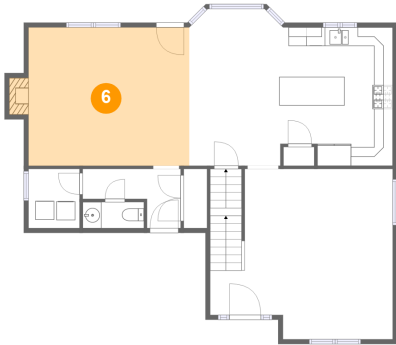


Dimensions: 10'0" x 16'8"  
Area: 163 sq. ft  
Counted as living area: Yes

Heated: Yes  
Finished: Yes  
Enclosed: Yes  
Contiguous: Yes  
Permitted: Yes  
Wet space: No  
Addition: No  
Conversion: No

# 5 Morningside Drive, Medway, Norfolk County, Massachusetts, United States, 02053

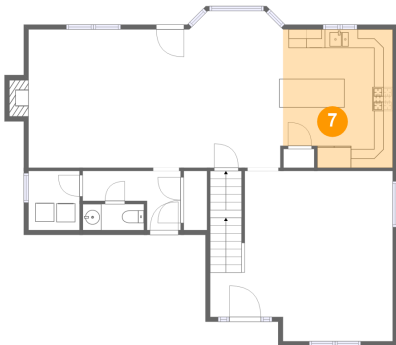
## 6 Floor 2 - Living Room



Dimensions: 17'2" x 14'9"  
Area: 261 sq. ft  
Counted as living area: Yes

Heated: Yes  
Finished: Yes  
Enclosed: Yes  
Contiguous: Yes  
Permitted: Yes  
Wet space: No  
Addition: No  
Conversion: No

## 7 Floor 2 - Kitchen



Dimensions: 11'8" x 14'9"  
Area: 164 sq. ft  
Counted as living area: Yes

Heated: Yes  
Finished: Yes  
Enclosed: Yes  
Contiguous: Yes  
Permitted: Yes  
Wet space: No  
Addition: No  
Conversion: No

## 8 Floor 2 - Living Room



Dimensions: 19'6" x 18'2"  
Area: 331 sq. ft  
Counted as living area: Yes

Heated: Yes  
Finished: Yes  
Enclosed: Yes  
Contiguous: Yes  
Permitted: Yes  
Wet space: No  
Addition: No  
Conversion: No

# 5 Morningside Drive, Medway, Norfolk County, Massachusetts, United States, 02053

## 9 Floor 2 - Hall



Dimensions: 10'5" x 6'4"  
Area: 45 sq. ft  
Counted as living area: Yes

Heated: Yes  
Finished: Yes  
Enclosed: Yes  
Contiguous: Yes  
Permitted: Yes  
Wet space: No  
Addition: No  
Conversion: No

## 10 Floor 2 - Utility



Dimensions: 5'5" x 6'4"  
Area: 34 sq. ft  
Counted as living area: Yes

Heated: Yes  
Finished: Yes  
Enclosed: Yes  
Contiguous: Yes  
Permitted: Yes  
Wet space: No  
Addition: No  
Conversion: No

## 11 Floor 2 - Bath



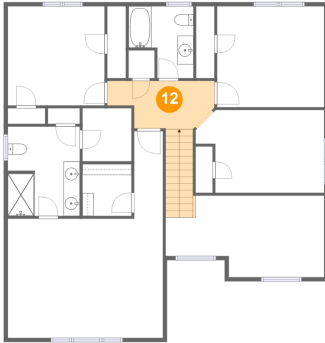
Dimensions: 6'6" x 2'9"  
Area: 18 sq. ft  
Counted as living area: Yes

Heated: Yes  
Finished: Yes  
Enclosed: Yes  
Contiguous: Yes  
Permitted: Yes  
Wet space: Yes  
Addition: No  
Conversion: No



# 5 Morningside Drive, Medway, Norfolk County, Massachusetts, United States, 02053

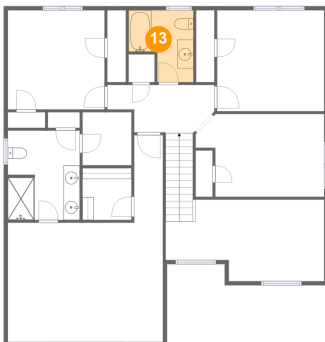
## 12 Floor 3 - Hall



Dimensions: 13'2" x 5'11"  
Area: 103 sq. ft  
Counted as living area: Yes

Heated: Yes  
Finished: Yes  
Enclosed: Yes  
Contiguous: Yes  
Permitted: Yes  
Wet space: No  
Addition: No  
Conversion: No

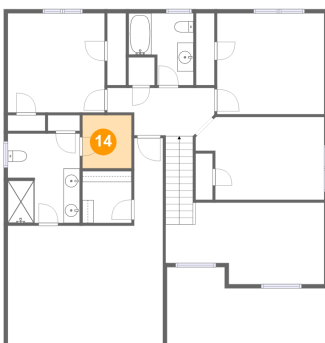
## 13 Floor 3 - Bath



Dimensions: 8'0" x 8'10"  
Area: 57 sq. ft  
Counted as living area: Yes

Heated: Yes  
Finished: Yes  
Enclosed: Yes  
Contiguous: Yes  
Permitted: Yes  
Wet space: Yes  
Addition: No  
Conversion: No

## 14 Floor 3 - Cl

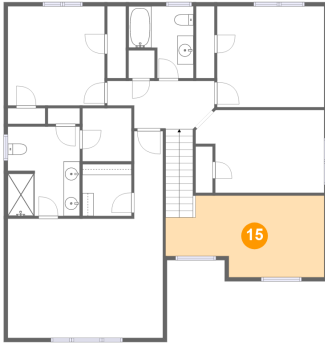


Dimensions: 6'0" x 6'6"  
Area: 39 sq. ft  
Counted as living area: Yes

Heated: Yes  
Finished: Yes  
Enclosed: Yes  
Contiguous: Yes  
Permitted: Yes  
Wet space: No  
Addition: No  
Conversion: No

# 5 Morningside Drive, Medway, Norfolk County, Massachusetts, United States, 02053

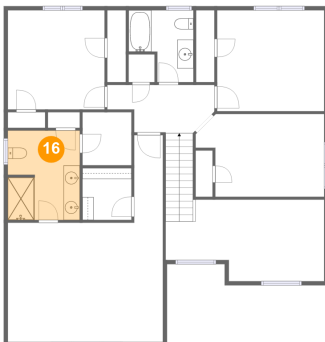
## 15 Floor 3 - Open To Below



Dimensions: 19'6" x 10'0"  
Area: 165 sq. ft  
Counted as living area: No

Heated: No  
Finished: No  
Enclosed: No  
Contiguous: Yes  
Permitted: No  
Wet space: No  
Addition: No  
Conversion: No

## 16 Floor 3 - Bath



Dimensions: 8'10" x 10'11"  
Area: 96 sq. ft  
Counted as living area: Yes

Heated: Yes  
Finished: Yes  
Enclosed: Yes  
Contiguous: Yes  
Permitted: Yes  
Wet space: Yes  
Addition: No  
Conversion: No

## 17 Floor 3 - Hall

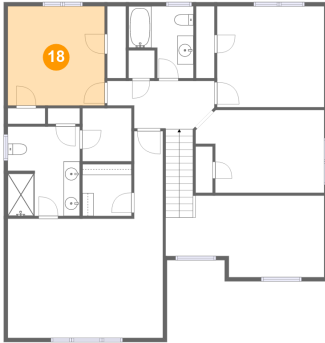


Dimensions: 3'6" x 10'9"  
Area: 38 sq. ft  
Counted as living area: Yes

Heated: Yes  
Finished: Yes  
Enclosed: Yes  
Contiguous: Yes  
Permitted: Yes  
Wet space: No  
Addition: No  
Conversion: No

# 5 Morningside Drive, Medway, Norfolk County, Massachusetts, United States, 02053

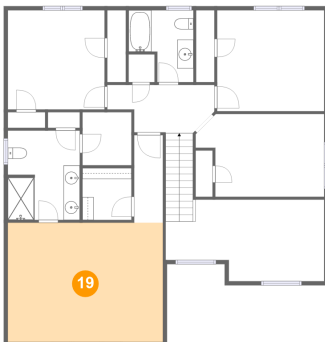
## 18 Floor 3 - Bedroom



Dimensions: 11'10" x 12'2"  
Area: 145 sq. ft  
Counted as living area: Yes

Heated: Yes  
Finished: Yes  
Enclosed: Yes  
Contiguous: Yes  
Permitted: Yes  
Wet space: No  
Addition: No  
Conversion: No

## 19 Floor 3 - Bedroom



Dimensions: 19'1" x 14'7"  
Area: 279 sq. ft  
Counted as living area: Yes

Heated: Yes  
Finished: Yes  
Enclosed: Yes  
Contiguous: Yes  
Permitted: Yes  
Wet space: No  
Addition: No  
Conversion: No

## 20 Floor 3 - Office

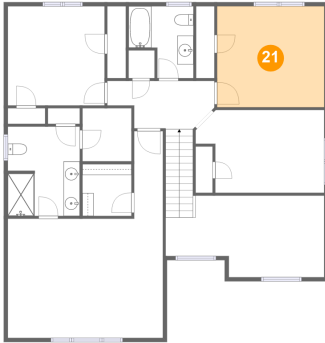


Dimensions: 15'9" x 10'2"  
Area: 143 sq. ft  
Counted as living area: Yes

Heated: Yes  
Finished: Yes  
Enclosed: Yes  
Contiguous: Yes  
Permitted: Yes  
Wet space: No  
Addition: No  
Conversion: No

# 5 Morningside Drive, Medway, Norfolk County, Massachusetts, United States, 02053

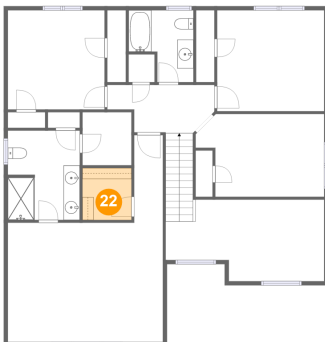
## 21 Floor 3 - Bedroom



Dimensions: 13'2" x 12'5"  
Area: 163 sq. ft  
Counted as living area: Yes

Heated: Yes  
Finished: Yes  
Enclosed: Yes  
Contiguous: Yes  
Permitted: Yes  
Wet space: No  
Addition: No  
Conversion: No

## 22 Floor 3 - Cl



Dimensions: 6'0" x 6'4"  
Area: 38 sq. ft  
Counted as living area: Yes

Heated: Yes  
Finished: Yes  
Enclosed: Yes  
Contiguous: Yes  
Permitted: Yes  
Wet space: No  
Addition: No  
Conversion: No