

# 126 South Pioneer Street, Ashland, Oregon 97520, United States




## Property Summary


 **0** garages

 **3** bedrooms

 **2** bathrooms

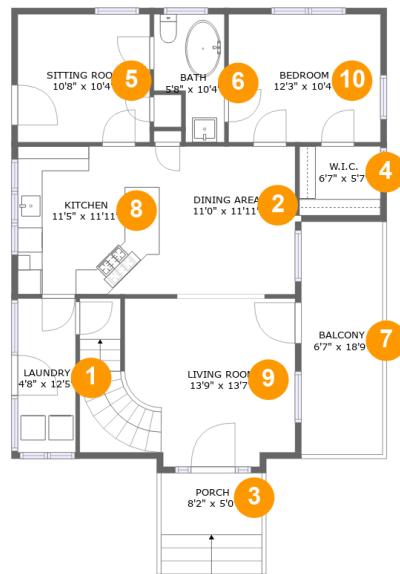
 **0** half baths

 **2** floors

 **1,719** Gross Living Area sqft

 **1,908** total sqft

# 126 South Pioneer Street, Ashland, Oregon 97520, United States



## Room Dimensions

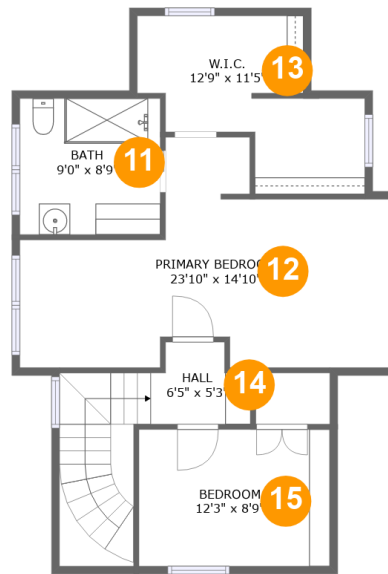
Floor 1

Total sqft: 1168

Living area: 979

#	Room name	Dimensions	Area (sqft)	Counted as Living Area
1	Laundry	4'8" x 12'5"	58 sq. ft	Yes
2	Dining Area	11'0" x 11'11"	131 sq. ft	Yes
3	Porch	8'2" x 5'0"	66 sq. ft	No
4	W.i.c.	6'7" x 5'7"	37 sq. ft	Yes
5	Sitting Room	10'8" x 10'4"	110 sq. ft	Yes
6	Bath	5'8" x 10'4"	48 sq. ft	Yes
7	Balcony	6'7" x 18'9"	123 sq. ft	No
8	Kitchen	11'5" x 11'11"	136 sq. ft	Yes
9	Living Room	13'9" x 13'7"	223 sq. ft	Yes
10	Bedroom	12'3" x 10'4"	127 sq. ft	Yes

# 126 South Pioneer Street, Ashland, Oregon 97520, United States



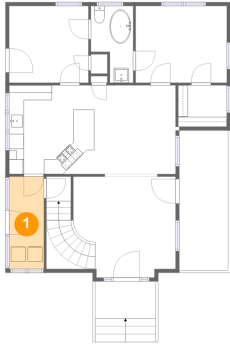
## Room Dimensions

**Floor 2****Total sqft: 740****Living area: 740**

#	Room name	Dimensions	Area (sqft)	Counted as Living Area
11	Bath	9'0" x 8'9"	79 sq. ft	Yes
12	Primary Bedroom	23'10" x 14'10"	245 sq. ft	Yes
13	W.i.c.	12'9" x 11'5"	111 sq. ft	Yes
14	Hall	6'5" x 5'3"	92 sq. ft	Yes
15	Bedroom	12'3" x 8'9"	108 sq. ft	Yes

**126 South Pioneer Street, Ashland, Oregon  
97520, United States**

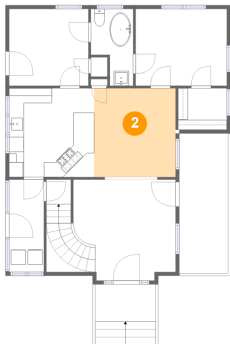
**1 Floor 1 - Laundry**



**Dimensions:** 4'8" x 12'5"  
**Area:** 58 sq. ft  
**Counted as Living Area:**  
Yes

**Heated:** Yes  
**Finished:** Yes  
**Enclosed:** Yes  
**Contiguous:**  
Yes  
**Permitted:** Yes  
**Wet Space:** No  
**Addition:** No  
**Conversion:** No

**2 Floor 1 - Dining Area**



**Dimensions:** 11'0" x 11'11"  
**Area:** 131 sq. ft  
**Counted as Living Area:**  
Yes

**Heated:** Yes  
**Finished:** Yes  
**Enclosed:** Yes  
**Contiguous:**  
Yes  
**Permitted:** Yes  
**Wet Space:** No  
**Addition:** No  
**Conversion:** No

# 126 South Pioneer Street, Ashland, Oregon 97520, United States

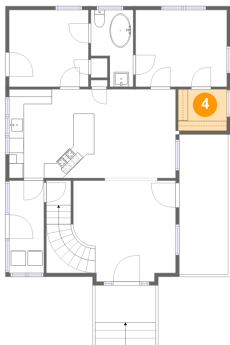
## 3 Floor 1 - Porch



Dimensions: 8'2" x 5'0"  
Area: 66 sq. ft  
Counted as Living Area: No

Heated: No  
Finished: Yes  
Enclosed: No  
Contiguous: Yes  
Permitted: Yes  
Wet Space: No  
Addition: No  
Conversion: No

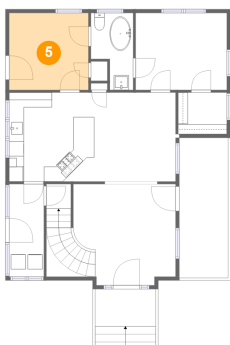
## 4 Floor 1 - W.i.c.



Dimensions: 6'7" x 5'7"  
Area: 37 sq. ft  
Counted as Living Area:  
Yes

Heated: Yes  
Finished: Yes  
Enclosed: Yes  
Contiguous:  
Yes  
Permitted: Yes  
Wet Space: No  
Addition: No  
Conversion: No

## 5 Floor 1 - Sitting Room

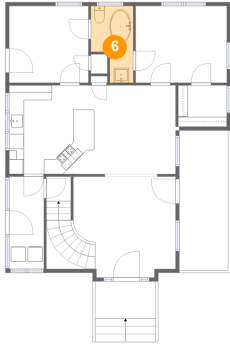


Dimensions: 10'8" x 10'4"  
Area: 110 sq. ft  
Counted as Living Area:  
Yes

Heated: Yes  
Finished: Yes  
Enclosed: Yes  
Contiguous:  
Yes  
Permitted: Yes  
Wet Space: No  
Addition: No  
Conversion: No

# 126 South Pioneer Street, Ashland, Oregon 97520, United States

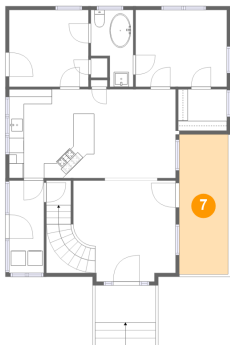
## 6 Floor 1 - Bath



Dimensions: 5'8" x 10'4"  
Area: 48 sq. ft  
Counted as Living Area:  
Yes

Heated: Yes  
Finished: Yes  
Enclosed: Yes  
Contiguous:  
Yes  
Permitted: Yes  
Wet Space: Yes  
Addition: No  
Conversion: No

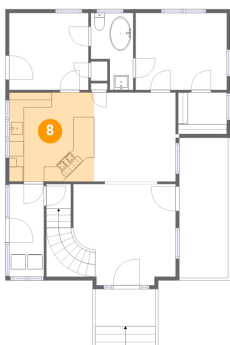
## 7 Floor 1 - Balcony



Dimensions: 6'7" x 18'9"  
Area: 123 sq. ft  
Counted as Living Area: No

Heated: No  
Finished: Yes  
Enclosed: No  
Contiguous: Yes  
Permitted: Yes  
Wet Space: No  
Addition: No  
Conversion: No

## 8 Floor 1 - Kitchen

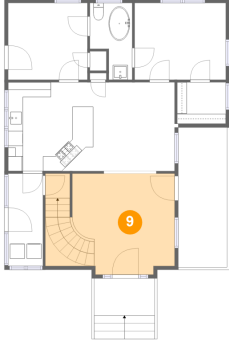


Dimensions: 11'5" x 11'11"  
Area: 136 sq. ft  
Counted as Living Area:  
Yes

Heated: Yes  
Finished: Yes  
Enclosed: Yes  
Contiguous:  
Yes  
Permitted: Yes  
Wet Space: No  
Addition: No  
Conversion: No

**126 South Pioneer Street, Ashland, Oregon  
97520, United States**

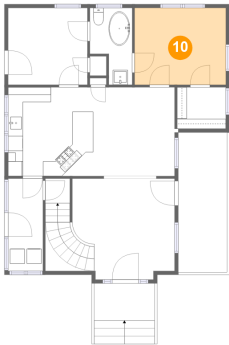
**9 Floor 1 - Living Room**



**Dimensions:** 13'9" x 13'7"  
**Area:** 223 sq. ft  
**Counted as Living Area:**  
Yes

**Heated:** Yes  
**Finished:** Yes  
**Enclosed:** Yes  
**Contiguous:**  
Yes  
**Permitted:** Yes  
**Wet Space:** No  
**Addition:** No  
**Conversion:** No

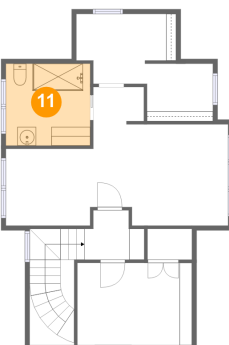
**10 Floor 1 - Bedroom**



**Dimensions:** 12'3" x 10'4"  
**Area:** 127 sq. ft  
**Counted as Living Area:**  
Yes

**Heated:** Yes  
**Finished:** Yes  
**Enclosed:** Yes  
**Contiguous:**  
Yes  
**Permitted:** Yes  
**Wet Space:** No  
**Addition:** No  
**Conversion:** No

**11 Floor 2 - Bath**

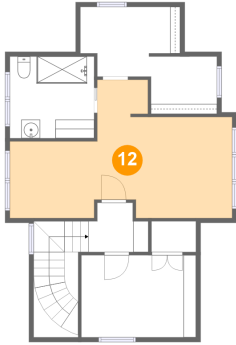


**Dimensions:** 9'0" x 8'9"  
**Area:** 79 sq. ft  
**Counted as Living Area:**  
Yes

**Heated:** Yes  
**Finished:** Yes  
**Enclosed:** Yes  
**Contiguous:**  
Yes  
**Permitted:** Yes  
**Wet Space:** Yes  
**Addition:** No  
**Conversion:** No

**126 South Pioneer Street, Ashland, Oregon  
97520, United States**

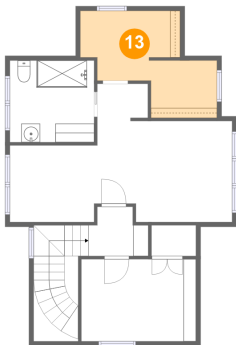
**12 Floor 2 - Primary Bedroom**



Dimensions: 23'10" x 14'10"  
Area: 245 sq. ft  
Counted as Living Area:  
Yes

Heated: Yes  
Finished: Yes  
Enclosed: Yes  
Contiguous:  
Yes  
Permitted: Yes  
Wet Space: No  
Addition: No  
Conversion: No

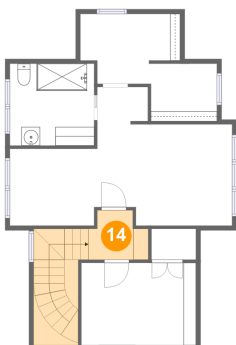
**13 Floor 2 - W.i.c.**



Dimensions: 12'9" x 11'5"  
Area: 111 sq. ft  
Counted as Living Area:  
Yes

Heated: Yes  
Finished: Yes  
Enclosed: Yes  
Contiguous:  
Yes  
Permitted: Yes  
Wet Space: No  
Addition: No  
Conversion: No

**14 Floor 2 - Hall**



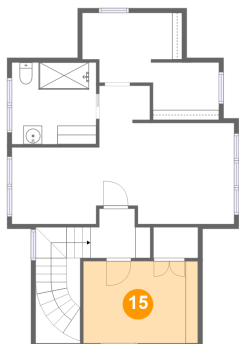
Dimensions: 6'5" x 5'3"  
Area: 92 sq. ft  
Counted as Living Area:  
Yes

Heated: Yes  
Finished: Yes  
Enclosed: Yes  
Contiguous:  
Yes  
Permitted: Yes  
Wet Space: No  
Addition: No  
Conversion: No



**126 South Pioneer Street, Ashland, Oregon  
97520, United States**

**15 Floor 2 - Bedroom**



**Dimensions:** 12'3" x 8'9"  
**Area:** 108 sq. ft  
**Counted as Living Area:**  
Yes

**Heated:** Yes  
**Finished:** Yes  
**Enclosed:** Yes  
**Contiguous:**  
Yes  
**Permitted:** Yes  
**Wet Space:** No  
**Addition:** No  
**Conversion:** No