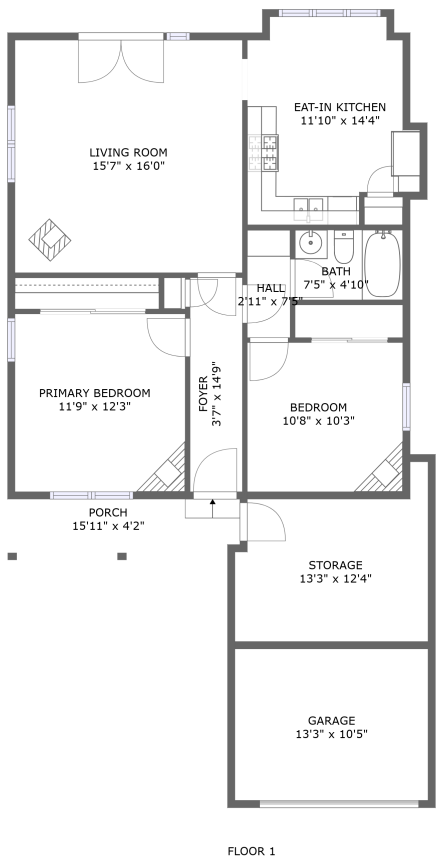


Home report

1521 5th Street, Baywood Park, Los Osos, San Luis Obispo  
County, California, United States, 93402



Total GLA: 908 sq. ft


Floor 1: 908 sq. ft

Excluded: Garage 163 sq. ft, Storage 143 sq. ft, Porch 66 sq. ft

Property summary

 **1** Floors

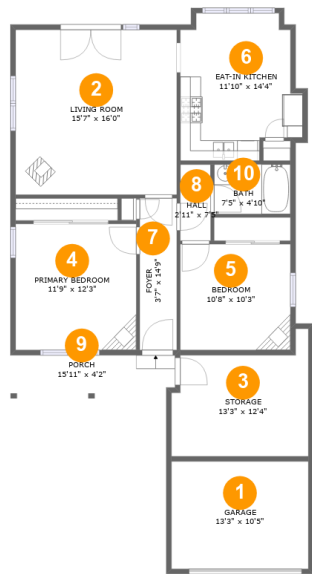
 **2** Bedrooms

 **1** Bathrooms

 **1** Garages

Home report

1521 5th Street, Baywood Park, Los Osos, San Luis Obispo  
County, California, United States, 93402



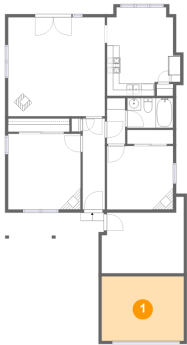
Room dimensions

Floor 1 Total:908sqft    Excluded: 372sqft

#		Max Dimensions	sqft	Included
1	Garage	13'3" x 10'5"	139 sq. ft	No
2	Living Room	15'7" x 16'0"	250 sq. ft	Yes
3	Storage	13'3" x 12'4"	130 sq. ft	No
4	Primary Bedroom	11'9" x 12'3"	143 sq. ft	Yes
5	Bedroom	10'8" x 10'3"	110 sq. ft	Yes
6	Eat-in Kitchen	11'10" x 14'4"	147 sq. ft	Yes
7	Foyer	3'7" x 14'9"	53 sq. ft	Yes
8	Hall	2'11" x 7'5"	22 sq. ft	Yes
9	Porch	15'11" x 4'2"	66 sq. ft	No
10	Bath	7'5" x 4'10"	36 sq. ft	Yes

1521 5th Street, Baywood Park, Los Osos, San Luis Obispo  
County, California, United States, 93402

1 Floor 1 - Garage



Max Dimensions: 13'3" x 10'5"  
Calculated Area: 139 sq. ft  
Included: No

Heated: No  
Finished: No  
Enclosed: Yes  
Contiguous: Yes  
Permitted: Yes  
Wet space: No  
Addition: No  
Conversion: No

2 Floor 1 - Living Room



Max Dimensions: 15'7" x 16'0"  
Calculated Area: 250 sq. ft  
Included: Yes

Heated: Yes  
Finished: Yes  
Enclosed: Yes  
Contiguous: Yes  
Permitted: Yes  
Wet space: No  
Addition: No  
Conversion: No

3 Floor 1 - Storage



Max Dimensions: 13'3" x 12'4"  
Calculated Area: 130 sq. ft  
Included: No

Heated: No  
Finished: No  
Enclosed: No  
Contiguous: Yes  
Permitted: Yes  
Wet space: No  
Addition: No  
Conversion: No

4 Floor 1 - Primary Bedroom



Max Dimensions: 11'9" x 12'3"  
Calculated Area: 143 sq. ft  
Included: Yes

Heated: Yes  
Finished: Yes  
Enclosed: Yes  
Contiguous: Yes  
Permitted: Yes  
Wet space: No  
Addition: No  
Conversion: No

5 Floor 1 - Bedroom



Max Dimensions: 10'8" x 10'3"  
Calculated Area: 110 sq. ft  
Included: Yes

Heated: Yes  
Finished: Yes  
Enclosed: Yes  
Contiguous: Yes  
Permitted: Yes  
Wet space: No  
Addition: No  
Conversion: No

1521 5th Street, Baywood Park, Los Osos, San Luis Obispo  
County, California, United States, 93402

6 Floor 1 - Eat-in Kitchen



Max Dimensions: 11'10" x 14'4"  
Calculated Area: 147 sq. ft  
Included: Yes

Heated: Yes  
Finished: Yes  
Enclosed: Yes  
Contiguous: Yes  
Permitted: Yes  
Wet space: No  
Addition: No  
Conversion: No

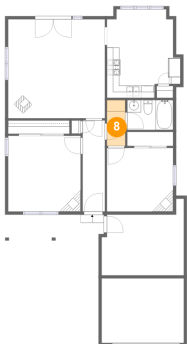
7 Floor 1 - Foyer



Max Dimensions: 3'7" x 14'9"  
Calculated Area: 53 sq. ft  
Included: Yes

Heated: Yes  
Finished: Yes  
Enclosed: Yes  
Contiguous: Yes  
Permitted: Yes  
Wet space: No  
Addition: No  
Conversion: No

8 Floor 1 - Hall

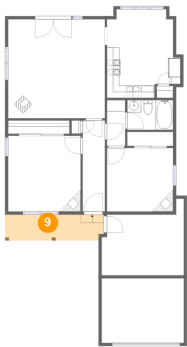


Max Dimensions: 2'11" x 7'5"  
Calculated Area: 22 sq. ft  
Included: Yes

Heated: Yes  
Finished: Yes  
Enclosed: Yes  
Contiguous: Yes  
Permitted: Yes  
Wet space: No  
Addition: No  
Conversion: No

1521 5th Street, Baywood Park, Los Osos, San Luis Obispo  
County, California, United States, 93402

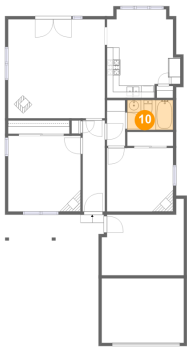
9 Floor 1 - Porch



Max Dimensions: 15'11" x 4'2"  
Calculated Area: 66 sq. ft  
Included: No

Heated: No  
Finished: Yes  
Enclosed: No  
Contiguous: Yes  
Permitted: Yes  
Wet space: No  
Addition: No  
Conversion: No

10 Floor 1 - Bath



Max Dimensions: 7'5" x 4'10"  
Calculated Area: 36 sq. ft  
Included: Yes

Heated: Yes  
Finished: Yes  
Enclosed: Yes  
Contiguous: Yes  
Permitted: Yes  
Wet space: Yes  
Addition: No  
Conversion: No