

**3757 Fairburn Drive, Glenmont, Cave Spring,  
Roanoke, Roanoke County, Virginia, United**



**Property Summary**



**1** garages



**4** bedrooms



**2** bathrooms



**0** half baths



**2** floors

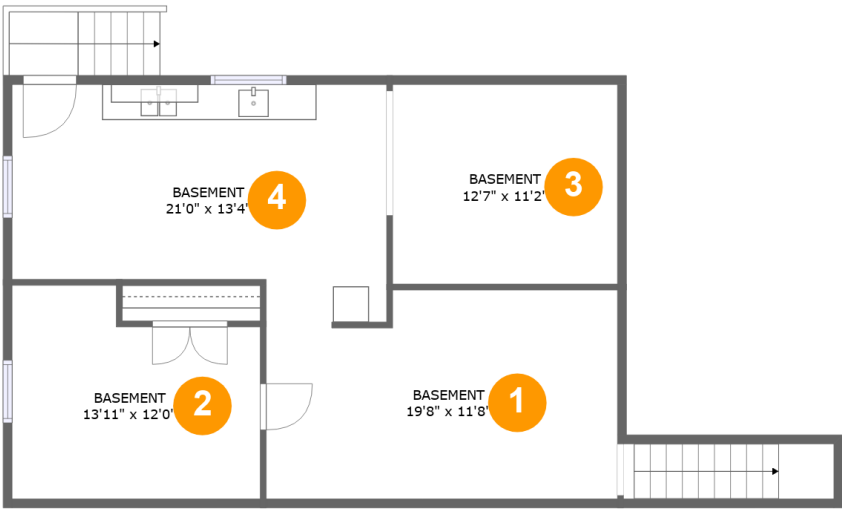


**2,189**  
Gross Living  
Area sqft



**3,571**  
total sqft

**3757 Fairburn Drive, Glenmont, Cave Spring,  
Roanoke, Roanoke County, Virginia, United**

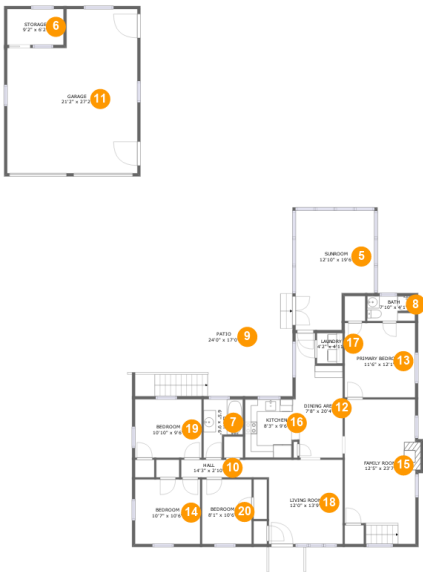


**Room Dimensions**

**Floor 1** **Total sqft: 896** **Living area: 501**

#	Room name	Dimensions	Area (sqft)	Counted as Living Area
1	Basement	19'8" x 11'8"	217 sq. ft	No
2	Basement	13'11" x 12'0"	148 sq. ft	No
3	Basement	12'7" x 11'2"	141 sq. ft	Yes
4	Basement	21'0" x 13'4"	245 sq. ft	Yes

3757 Fairburn Drive, Glenmont, Cave Spring,  
Roanoke, Roanoke County, Virginia, United



Room Dimensions

Floor 2 Total sqft: 2675 Living area: 1688

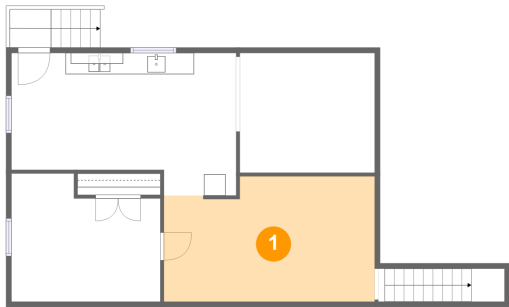
#	Room name	Dimensions	Area (sqft)	Counted as Living Area
5	Sunroom	12'10" x 19'6"	218 sq. ft	Yes
6	Storage	9'2" x 6'2"	57 sq. ft	No
7	Bath	6'5" x 9'6"	48 sq. ft	Yes
8	Bath	7'10" x 4'1"	31 sq. ft	Yes
9	Patio	24'0" x 17'0"	368 sq. ft	No
10	Hall	14'3" x 2'10"	41 sq. ft	Yes
11	Garage	21'2" x 27'2"	511 sq. ft	No
12	Dining Area	7'8" x 20'4"	130 sq. ft	Yes
13	Primary Bedroom	11'6" x 12'1"	139 sq. ft	Yes
14	Bedroom	10'7" x 10'6"	111 sq. ft	Yes
15	Family Room	12'5" x 23'7"	264 sq. ft	Yes

**3757 Fairburn Drive, Glenmont, Cave Spring,  
Roanoke, Roanoke County, Virginia, United**

#	Room name	Dimensions	Area (sqft)	Counted as Living Area
16	Kitchen	8'3" x 9'6"	77 sq. ft	Yes
17	Laundry	4'2" x 4'11"	21 sq. ft	Yes
18	Living Room	12'0" x 13'9"	165 sq. ft	Yes
19	Bedroom	10'10" x 9'6"	103 sq. ft	Yes
20	Bedroom	8'1" x 10'6"	85 sq. ft	Yes

**3757 Fairburn Drive, Glenmont, Cave Spring,  
Roanoke, Roanoke County, Virginia, United**

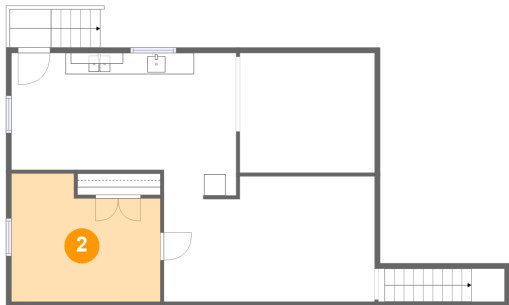
**1 Floor 1 - Basement**



Dimensions: 19'8" x 11'8"  
Area: 217 sq. ft  
Counted as Living Area: No

Heated: Yes  
Finished: Yes  
Enclosed: Yes  
Contiguous: Yes  
Permitted: Yes  
Wet Space: No  
Addition: No  
Conversion: No

**2 Floor 1 - Basement**

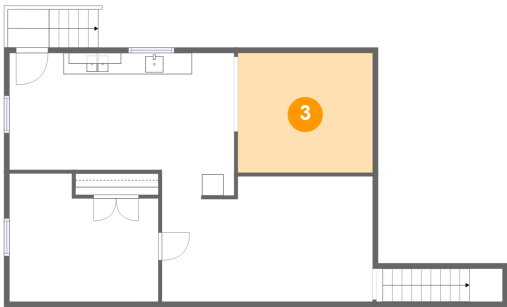


Dimensions: 13'11" x 12'0"  
Area: 148 sq. ft  
Counted as Living Area: No

Heated: Yes  
Finished: Yes  
Enclosed: Yes  
Contiguous: Yes  
Permitted: Yes  
Wet Space: No  
Addition: No  
Conversion: No

**3757 Fairburn Drive, Glenmont, Cave Spring,  
Roanoke, Roanoke County, Virginia, United**

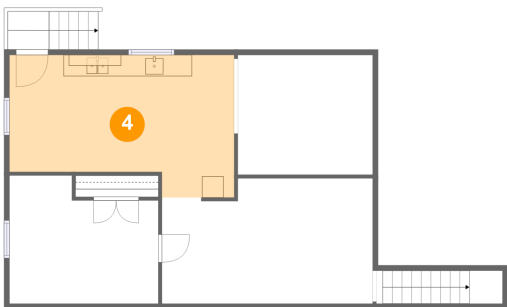
**3 Floor 1 - Basement**



Dimensions: 12'7" x 11'2"  
Area: 141 sq. ft  
Counted as Living Area:  
Yes

Heated: Yes  
Finished: Yes  
Enclosed: Yes  
Contiguous:  
Yes  
Permitted: Yes  
Wet Space: No  
Addition: No  
Conversion: No

**4 Floor 1 - Basement**



Dimensions: 21'0" x 13'4"  
Area: 245 sq. ft  
Counted as Living Area:  
Yes

Heated: Yes  
Finished: Yes  
Enclosed: Yes  
Contiguous:  
Yes  
Permitted: Yes  
Wet Space: No  
Addition: No  
Conversion: No

**5 Floor 2 - Sunroom**



Dimensions: 12'10" x 19'6"  
Area: 218 sq. ft  
Counted as Living Area:  
Yes

Heated: Yes  
Finished: Yes  
Enclosed: Yes  
Contiguous:  
Yes  
Permitted: Yes  
Wet Space: No  
Addition: No  
Conversion: No

**3757 Fairburn Drive, Glenmont, Cave Spring,  
Roanoke, Roanoke County, Virginia, United**

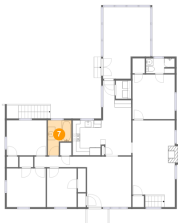
**6 Floor 2 - Storage**



Dimensions: 9'2" x 6'2"  
Area: 57 sq. ft  
Counted as Living Area: No

Heated: No  
Finished: No  
Enclosed: No  
Contiguous: Yes  
Permitted: Yes  
Wet Space: No  
Addition: No  
Conversion: No

**7 Floor 2 - Bath**



Dimensions: 6'5" x 9'6"  
Area: 48 sq. ft  
Counted as Living Area: Yes

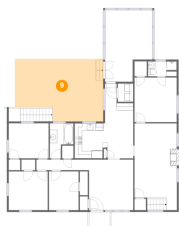
Heated: Yes  
Finished: Yes  
Enclosed: Yes  
Contiguous: Yes  
Permitted: Yes  
Wet Space: Yes  
Addition: No  
Conversion: No

**8 Floor 2 - Bath**



Dimensions: 7'10" x 4'1"  
Area: 31 sq. ft  
Counted as Living Area: Yes

Heated: Yes  
Finished: Yes  
Enclosed: Yes  
Contiguous: Yes  
Permitted: Yes  
Wet Space: Yes  
Addition: No  
Conversion: No

**3757 Fairburn Drive, Glenmont, Cave Spring,  
Roanoke, Roanoke County, Virginia, United****9 Floor 2 - Patio**

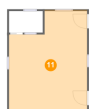
Dimensions: 24'0" x 17'0"  
Area: 368 sq. ft  
Counted as Living Area: No

Heated: No  
Finished: Yes  
Enclosed: No  
Contiguous: Yes  
Permitted: Yes  
Wet Space: No  
Addition: No  
Conversion: No

**10 Floor 2 - Hall**

Dimensions: 14'3" x 2'10"  
Area: 41 sq. ft  
Counted as Living Area: Yes

Heated: Yes  
Finished: Yes  
Enclosed: Yes  
Contiguous: Yes  
Permitted: Yes  
Wet Space: No  
Addition: No  
Conversion: No

**11 Floor 2 - Garage**

Dimensions: 21'2" x 27'2"  
Area: 511 sq. ft  
Counted as Living Area: No

Heated: No  
Finished: No  
Enclosed: Yes  
Contiguous: Yes  
Permitted: Yes  
Wet Space: No  
Addition: No  
Conversion: No



**3757 Fairburn Drive, Glenmont, Cave Spring,  
Roanoke, Roanoke County, Virginia, United**

**12 Floor 2 - Dining Area**



Dimensions: 7'8" x 20'4"  
Area: 130 sq. ft  
Counted as Living Area:  
Yes

Heated: Yes  
Finished: Yes  
Enclosed: Yes  
Contiguous:  
Yes  
Permitted: Yes  
Wet Space: No  
Addition: No  
Conversion: No

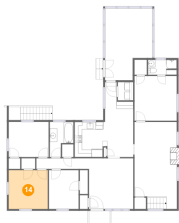
**13 Floor 2 - Primary Bedroom**



Dimensions: 11'6" x 12'1"  
Area: 139 sq. ft  
Counted as Living Area:  
Yes

Heated: Yes  
Finished: Yes  
Enclosed: Yes  
Contiguous:  
Yes  
Permitted: Yes  
Wet Space: No  
Addition: No  
Conversion: No

**14 Floor 2 - Bedroom**



Dimensions: 10'7" x 10'6"  
Area: 111 sq. ft  
Counted as Living Area:  
Yes

Heated: Yes  
Finished: Yes  
Enclosed: Yes  
Contiguous:  
Yes  
Permitted: Yes  
Wet Space: No  
Addition: No  
Conversion: No

**3757 Fairburn Drive, Glenmont, Cave Spring,  
Roanoke, Roanoke County, Virginia, United****15 Floor 2 - Family Room**

Dimensions: 12'5" x 23'7"  
Area: 264 sq. ft  
Counted as Living Area:  
Yes

Heated: Yes  
Finished: Yes  
Enclosed: Yes  
Contiguous:  
Yes  
Permitted: Yes  
Wet Space: No  
Addition: No  
Conversion: No

**16 Floor 2 - Kitchen**

Dimensions: 8'3" x 9'6"  
Area: 77 sq. ft  
Counted as Living Area:  
Yes

Heated: Yes  
Finished: Yes  
Enclosed: Yes  
Contiguous:  
Yes  
Permitted: Yes  
Wet Space: No  
Addition: No  
Conversion: No

**17 Floor 2 - Laundry**

Dimensions: 4'2" x 4'11"  
Area: 21 sq. ft  
Counted as Living Area:  
Yes

Heated: Yes  
Finished: Yes  
Enclosed: Yes  
Contiguous:  
Yes  
Permitted: Yes  
Wet Space: No  
Addition: No  
Conversion: No

**3757 Fairburn Drive, Glenmont, Cave Spring,  
Roanoke, Roanoke County, Virginia, United**

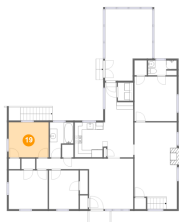
**18 Floor 2 - Living Room**



Dimensions: 12'0" x 13'9"  
Area: 165 sq. ft  
Counted as Living Area:  
Yes

Heated: Yes  
Finished: Yes  
Enclosed: Yes  
Contiguous:  
Yes  
Permitted: Yes  
Wet Space: No  
Addition: No  
Conversion: No

**19 Floor 2 - Bedroom**



Dimensions: 10'10" x 9'6"  
Area: 103 sq. ft  
Counted as Living Area:  
Yes

Heated: Yes  
Finished: Yes  
Enclosed: Yes  
Contiguous:  
Yes  
Permitted: Yes  
Wet Space: No  
Addition: No  
Conversion: No

**20 Floor 2 - Bedroom**



Dimensions: 8'1" x 10'6"  
Area: 85 sq. ft  
Counted as Living Area:  
Yes

Heated: Yes  
Finished: Yes  
Enclosed: Yes  
Contiguous:  
Yes  
Permitted: Yes  
Wet Space: No  
Addition: No  
Conversion: No