

Home data report

5 Cortina Crescent, Rosedale, King's Forest, Hamilton, Ontario, Canada, L8K 4K3



Total Area: 2389 sq. ft

1st Floor: 530 sq. ft, 2nd Floor: 1044 sq. ft, 3rd Floor: 815 sq. ft

Excluded: Storage 52 sq. ft, Utility 505 sq. ft, Garage 244 sq. ft, Embedded window 10 sq. ft, Fireplace 10 sq. ft

Property summary



Home data report

**5 Cortina Crescent, Rosedale, King's Forest, Hamilton, Ontario,
Canada, L8K 4K3**



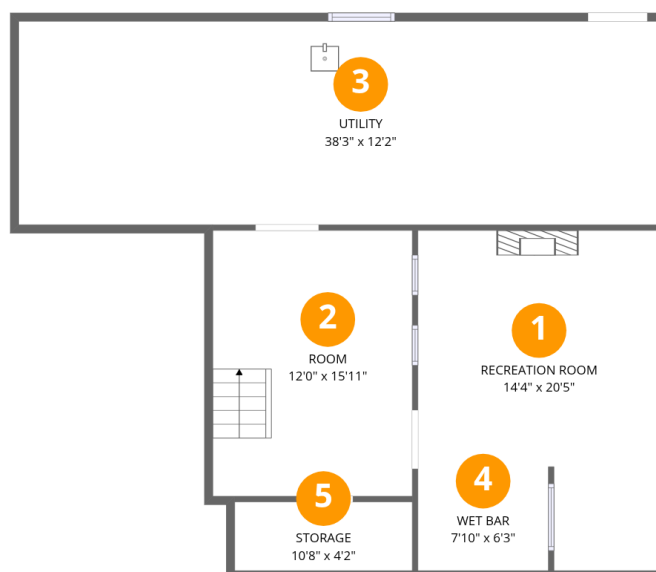
1
Half baths



1
Garages

Home data report

5 Cortina Crescent, Rosedale, King's Forest, Hamilton, Ontario, Canada, L8K 4K3



Room dimensions

Floor 1

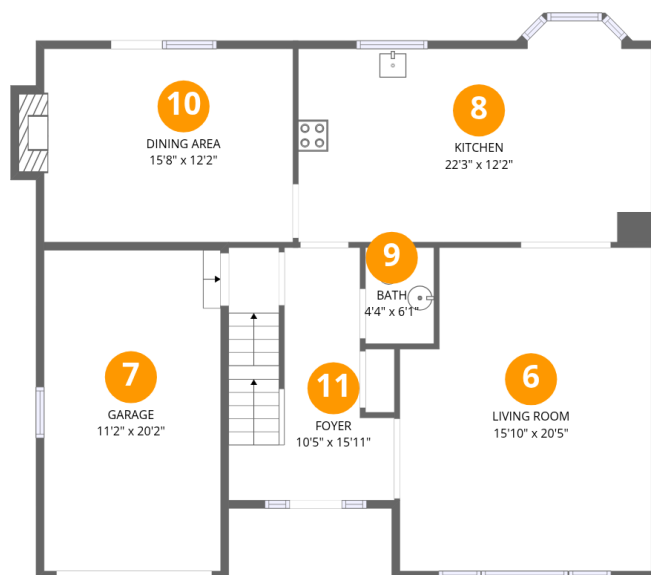
Total:530sqft

Excluded: 557sqft

#		Dimensions	sqft	Counted as living area
1	Recreation Room	14'4" x 20'5"	293 sq. ft	Yes
2	Room	12'0" x 15'11"	191 sq. ft	Yes
3	Utility	38'3" x 12'2"	466 sq. ft	No
4	Wet Bar	7'10" x 6'3"	49 sq. ft	Yes
5	Storage	10'8" x 4'2"	44 sq. ft	No

Home data report

5 Cortina Crescent, Rosedale, King's Forest, Hamilton, Ontario, Canada, L8K 4K3



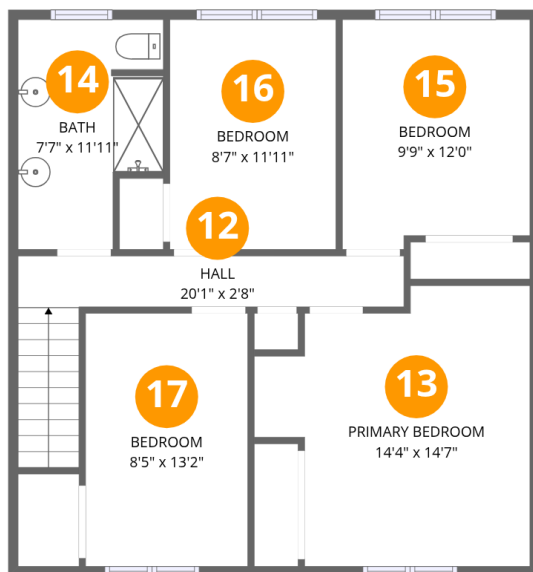
Room dimensions

Floor 2

Total:1044sqft Excluded: 264sqft

#		Dimensions	sqft	Counted as living area
6	Living Room	15'10" x 20'5"	324 sq. ft	Yes
7	Garage	11'2" x 20'2"	225 sq. ft	No
8	Kitchen	22'3" x 12'2"	272 sq. ft	Yes
9	Bath	4'4" x 6'1"	26 sq. ft	Yes
10	Dining Area	15'8" x 12'2"	191 sq. ft	Yes
11	Foyer	10'5" x 15'11"	167 sq. ft	Yes

5 Cortina Crescent, Rosedale, King's Forest, Hamilton, Ontario, Canada, L8K 4K3



Room dimensions

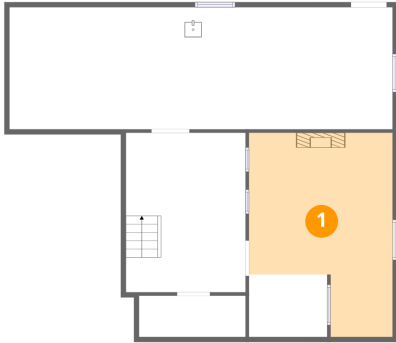
Floor 3

Total:815sqft Excluded: 0sqft

#		Dimensions	sqft	Counted as living area
12	Hall	20'1" x 2'8"	54 sq. ft	Yes
13	Primary Bedroom	14'4" x 14'7"	210 sq. ft	Yes
14	Bath	7'7" x 11'11"	90 sq. ft	Yes
15	Bedroom	9'9" x 12'0"	117 sq. ft	Yes
16	Bedroom	8'7" x 11'11"	103 sq. ft	Yes
17	Bedroom	8'5" x 13'2"	111 sq. ft	Yes

5 Cortina Crescent, Rosedale, King's Forest, Hamilton, Ontario, Canada, L8K 4K3

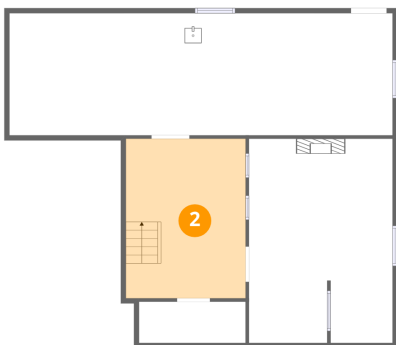
1 Floor 1 - Recreation Room



Dimensions: 14'4" x 20'5"
Area: 293 sq. ft
Counted as living area: Yes

Heated: Yes
Finished: Yes
Enclosed: Yes
Contiguous: Yes
Permitted: Yes
Wet space: No
Addition: No
Conversion: No

2 Floor 1 - Room

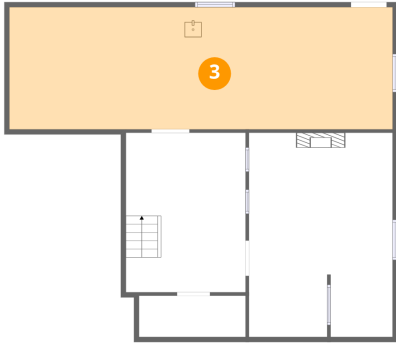


Dimensions: 12'0" x 15'11"
Area: 191 sq. ft
Counted as living area: Yes

Heated: Yes
Finished: Yes
Enclosed: Yes
Contiguous: Yes
Permitted: Yes
Wet space: No
Addition: No
Conversion: No

5 Cortina Crescent, Rosedale, King's Forest, Hamilton, Ontario, Canada, L8K 4K3

3 Floor 1 - Utility



Dimensions: 38'3" x 12'2"
Area: 466 sq. ft
Counted as living area: No

Heated: Yes
Finished: No
Enclosed: Yes
Contiguous: Yes
Permitted: Yes
Wet space: No
Addition: No
Conversion: No

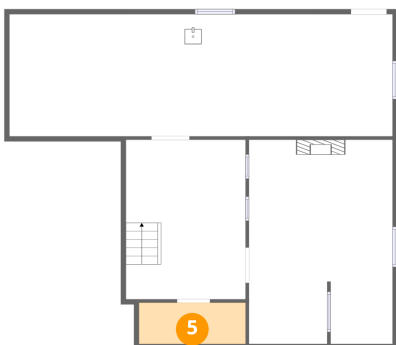
4 Floor 1 - Wet Bar



Dimensions: 7'10" x 6'3"
Area: 49 sq. ft
Counted as living area: Yes

Heated: Yes
Finished: Yes
Enclosed: Yes
Contiguous: Yes
Permitted: Yes
Wet space: No
Addition: No
Conversion: No

5 Floor 1 - Storage

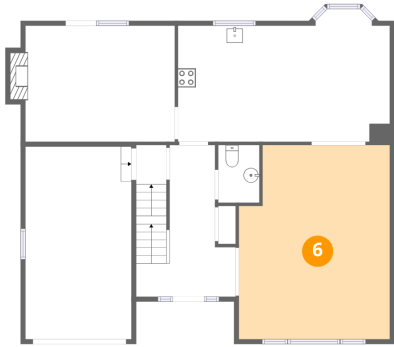


Dimensions: 10'8" x 4'2"
Area: 44 sq. ft
Counted as living area: No

Heated: No
Finished: No
Enclosed: No
Contiguous: Yes
Permitted: Yes
Wet space: No
Addition: No
Conversion: No

5 Cortina Crescent, Rosedale, King's Forest, Hamilton, Ontario, Canada, L8K 4K3

6 Floor 2 - Living Room



Dimensions: 15'10" x 20'5"
Area: 324 sq. ft
Counted as living area: Yes

Heated: Yes
Finished: Yes
Enclosed: Yes
Contiguous: Yes
Permitted: Yes
Wet space: No
Addition: No
Conversion: No

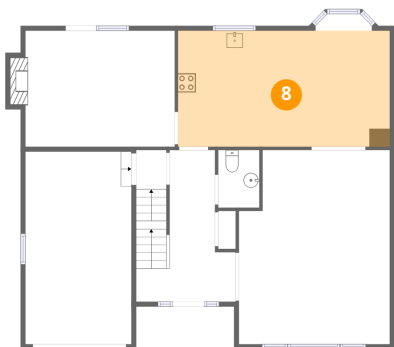
7 Floor 2 - Garage



Dimensions: 11'2" x 20'2"
Area: 225 sq. ft
Counted as living area: No

Heated: No
Finished: No
Enclosed: Yes
Contiguous: Yes
Permitted: Yes
Wet space: No
Addition: No
Conversion: No

8 Floor 2 - Kitchen



Dimensions: 22'3" x 12'2"
Area: 272 sq. ft
Counted as living area: Yes

Heated: Yes
Finished: Yes
Enclosed: Yes
Contiguous: Yes
Permitted: Yes
Wet space: No
Addition: No
Conversion: No

5 Cortina Crescent, Rosedale, King's Forest, Hamilton, Ontario, Canada, L8K 4K3

9 Floor 2 - Bath



Dimensions: 4'4" x 6'1"
Area: 26 sq. ft
Counted as living area: Yes

Heated: Yes
Finished: Yes
Enclosed: Yes
Contiguous: Yes
Permitted: Yes
Wet space: Yes
Addition: No
Conversion: No

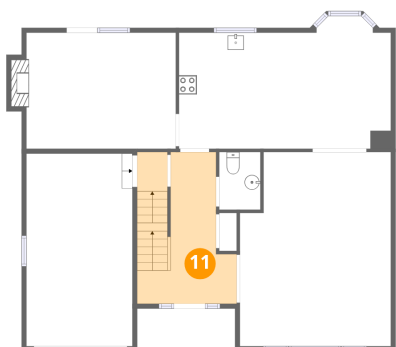
10 Floor 2 - Dining Area



Dimensions: 15'8" x 12'2"
Area: 191 sq. ft
Counted as living area: Yes

Heated: Yes
Finished: Yes
Enclosed: Yes
Contiguous: Yes
Permitted: Yes
Wet space: No
Addition: No
Conversion: No

11 Floor 2 - Foyer

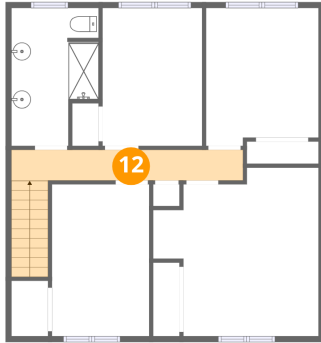


Dimensions: 10'5" x 15'11"
Area: 167 sq. ft
Counted as living area: Yes

Heated: Yes
Finished: Yes
Enclosed: Yes
Contiguous: Yes
Permitted: Yes
Wet space: No
Addition: No
Conversion: No

5 Cortina Crescent, Rosedale, King's Forest, Hamilton, Ontario, Canada, L8K 4K3

12 Floor 3 - Hall



Dimensions: 20'1" x 2'8"
Area: 54 sq. ft
Counted as living area: Yes

Heated: Yes
Finished: Yes
Enclosed: Yes
Contiguous: Yes
Permitted: Yes
Wet space: No
Addition: No
Conversion: No

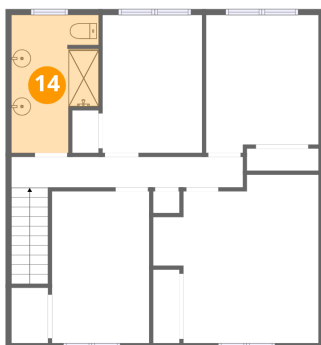
13 Floor 3 - Primary Bedroom



Dimensions: 14'4" x 14'7"
Area: 210 sq. ft
Counted as living area: Yes

Heated: Yes
Finished: Yes
Enclosed: Yes
Contiguous: Yes
Permitted: Yes
Wet space: No
Addition: No
Conversion: No

14 Floor 3 - Bath



Dimensions: 7'7" x 11'11"
Area: 90 sq. ft
Counted as living area: Yes

Heated: Yes
Finished: Yes
Enclosed: Yes
Contiguous: Yes
Permitted: Yes
Wet space: Yes
Addition: No
Conversion: No

5 Cortina Crescent, Rosedale, King's Forest, Hamilton, Ontario, Canada, L8K 4K3

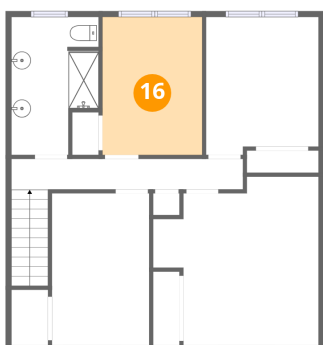
15 Floor 3 - Bedroom



Dimensions: 9'9" x 12'0"
Area: 117 sq. ft
Counted as living area: Yes

Heated: Yes
Finished: Yes
Enclosed: Yes
Contiguous: Yes
Permitted: Yes
Wet space: No
Addition: No
Conversion: No

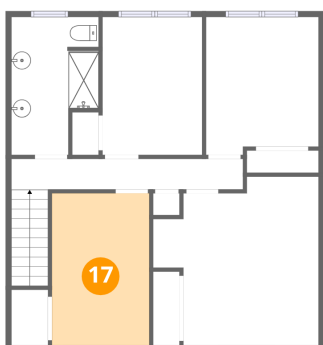
16 Floor 3 - Bedroom



Dimensions: 8'7" x 11'11"
Area: 103 sq. ft
Counted as living area: Yes

Heated: Yes
Finished: Yes
Enclosed: Yes
Contiguous: Yes
Permitted: Yes
Wet space: No
Addition: No
Conversion: No

17 Floor 3 - Bedroom



Dimensions: 8'5" x 13'2"
Area: 111 sq. ft
Counted as living area: Yes

Heated: Yes
Finished: Yes
Enclosed: Yes
Contiguous: Yes
Permitted: Yes
Wet space: No
Addition: No
Conversion: No