

Home report

1318 Keagy Lane Southwest, Greater Deyerle, Roanoke,  
Roanoke city, Virginia, United States, 24018



Total Area: 2573 sq. ft

Floor 1: 1131 sq. ft, Floor 2: 1442 sq. ft

Excluded: Storage 286 sq. ft, Garage 434 sq. ft, Porch 52 sq. ft, Deck 189 sq. ft, Walls: 202 sq. ft

Property summary

2 Floors

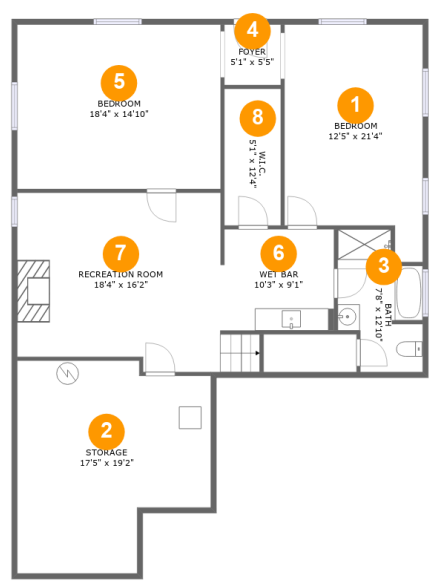
4 Bedrooms

3 Bathrooms

1 Garages

Home report

1318 Keagy Lane Southwest, Greater Deyerle, Roanoke,  
Roanoke city, Virginia, United States, 24018



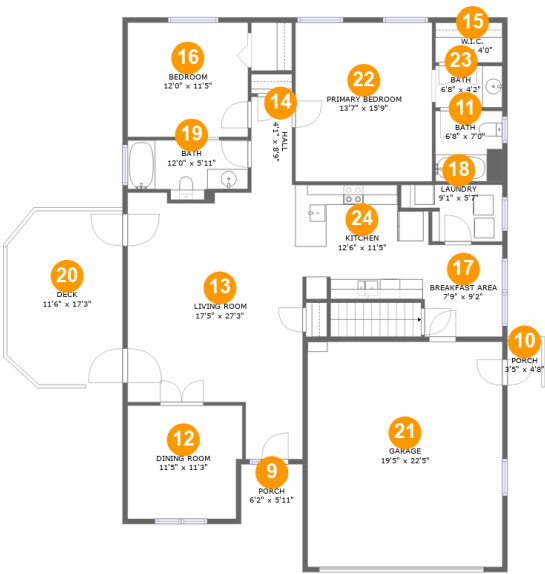
Room dimensions

Floor 1 Total:1131sqft    Excluded: 286sqft

#		Max Dimensions	sqft	Included
1	Bedroom	12'5" x 21'4"	233 sq. ft	Yes
2	Storage	17'5" x 19'2"	286 sq. ft	No
3	Bath	7'8" x 12'10"	80 sq. ft	Yes
4	Foyer	5'1" x 5'5"	28 sq. ft	Yes
5	Bedroom	18'4" x 14'10"	271 sq. ft	Yes
6	Wet Bar	10'3" x 9'1"	104 sq. ft	Yes
7	Recreation Room	18'4" x 16'2"	279 sq. ft	Yes
8	W.I.C.	5'1" x 12'4"	62 sq. ft	Yes

Home report

1318 Keagy Lane Southwest, Greater Deyerle, Roanoke,  
Roanoke city, Virginia, United States, 24018



Room dimensions

Floor 2 Total:1442sqft Excluded: 675sqft

#		Max Dimensions	sqft	Included
9	Porch	6'2" x 5'11"	36 sq. ft	No
10	Porch	3'5" x 4'8"	16 sq. ft	No
11	Bath	6'8" x 7'0"	47 sq. ft	Yes
12	Dining Room	11'5" x 11'3"	125 sq. ft	Yes
13	Living Room	17'5" x 27'3"	394 sq. ft	Yes
14	Hall	4'1" x 8'9"	36 sq. ft	Yes
15	W.I.C.	6'8" x 4'0"	26 sq. ft	Yes
16	Bedroom	12'0" x 11'5"	136 sq. ft	Yes
17	Breakfast Area	7'9" x 9'2"	71 sq. ft	Yes
18	Laundry	9'1" x 5'7"	46 sq. ft	Yes
19	Bath	12'0" x 5'11"	63 sq. ft	Yes

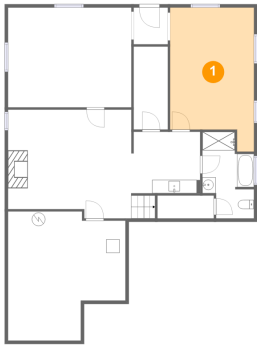
Home report

1318 Keagy Lane Southwest, Greater Deyerle, Roanoke,  
Roanoke city, Virginia, United States, 24018

#		Max Dimensions	sqft	Included
20	Deck	11'6" x 17'3"	189 sq. ft	No
21	Garage	19'5" x 22'5"	434 sq. ft	No
22	Primary Bedroom	13'7" x 15'9"	215 sq. ft	Yes
23	Bath	6'8" x 4'2"	28 sq. ft	Yes
24	Kitchen	12'6" x 11'5"	131 sq. ft	Yes

1318 Keagy Lane Southwest, Greater Deyerle, Roanoke,  
Roanoke city, Virginia, United States, 24018

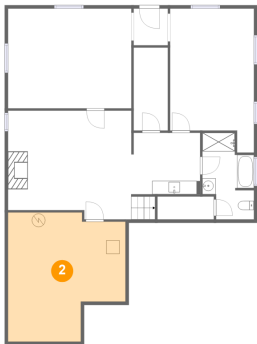
1 Floor 1 - Bedroom



Max Dimensions: 12'5" x 21'4"  
Calculated Area: 233 sq. ft  
Included: Yes

Heated: Yes  
Finished: Yes  
Enclosed: Yes  
Contiguous: Yes  
Permitted: Yes  
Wet space: No  
Addition: No  
Conversion: No

2 Floor 1 - Storage

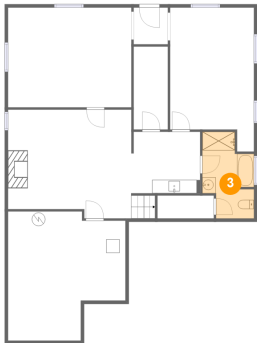


Max Dimensions: 17'5" x 19'2"  
Calculated Area: 286 sq. ft  
Included: No

Heated: No  
Finished: No  
Enclosed: No  
Contiguous: Yes  
Permitted: Yes  
Wet space: No  
Addition: No  
Conversion: No

1318 Keagy Lane Southwest, Greater Deyerle, Roanoke,  
Roanoke city, Virginia, United States, 24018

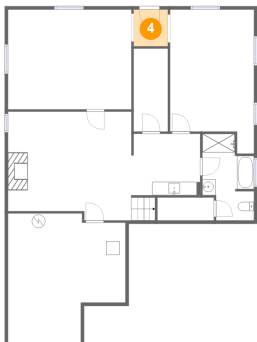
3 Floor 1 - Bath



Max Dimensions: 7'8" x 12'10"  
Calculated Area: 80 sq. ft  
Included: Yes

Heated: Yes  
Finished: Yes  
Enclosed: Yes  
Contiguous: Yes  
Permitted: Yes  
Wet space: Yes  
Addition: No  
Conversion: No

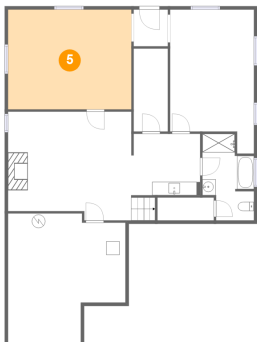
4 Floor 1 - Foyer



Max Dimensions: 5'1" x 5'5"  
Calculated Area: 28 sq. ft  
Included: Yes

Heated: Yes  
Finished: Yes  
Enclosed: Yes  
Contiguous: Yes  
Permitted: Yes  
Wet space: No  
Addition: No  
Conversion: No

5 Floor 1 - Bedroom

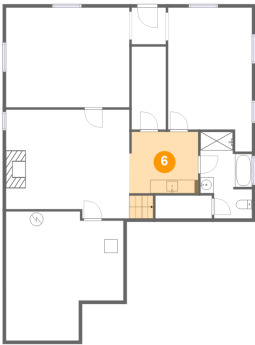


Max Dimensions: 18'4" x 14'10"  
Calculated Area: 271 sq. ft  
Included: Yes

Heated: Yes  
Finished: Yes  
Enclosed: Yes  
Contiguous: Yes  
Permitted: Yes  
Wet space: No  
Addition: No  
Conversion: No

1318 Keagy Lane Southwest, Greater Deyerle, Roanoke,  
Roanoke city, Virginia, United States, 24018

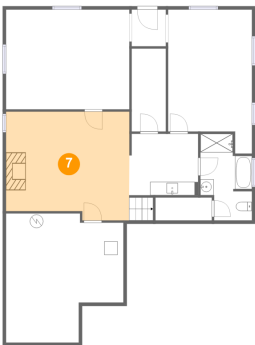
6 Floor 1 - Wet Bar



Max Dimensions: 10'3" x 9'1"  
Calculated Area: 104 sq. ft  
Included: Yes

Heated: Yes  
Finished: Yes  
Enclosed: Yes  
Contiguous: Yes  
Permitted: Yes  
Wet space: No  
Addition: No  
Conversion: No

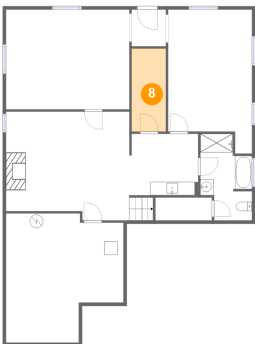
7 Floor 1 - Recreation Room



Max Dimensions: 18'4" x 16'2"  
Calculated Area: 279 sq. ft  
Included: Yes

Heated: Yes  
Finished: Yes  
Enclosed: Yes  
Contiguous: Yes  
Permitted: Yes  
Wet space: No  
Addition: No  
Conversion: No

8 Floor 1 - W.I.C.



Max Dimensions: 5'1" x 12'4"  
Calculated Area: 62 sq. ft  
Included: Yes

Heated: Yes  
Finished: Yes  
Enclosed: Yes  
Contiguous: Yes  
Permitted: Yes  
Wet space: No  
Addition: No  
Conversion: No

1318 Keagy Lane Southwest, Greater Deyerle, Roanoke,  
Roanoke city, Virginia, United States, 24018

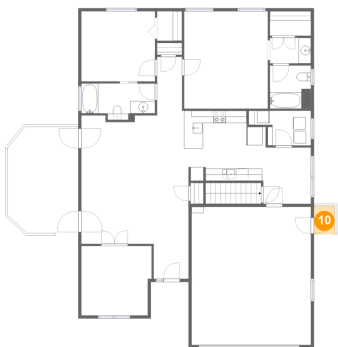
9 Floor 2 - Porch



Max Dimensions: 6'2" x 5'11"  
Calculated Area: 36 sq. ft  
Included: No

Heated: No  
Finished: Yes  
Enclosed: No  
Contiguous: Yes  
Permitted: Yes  
Wet space: No  
Addition: No  
Conversion: No

10 Floor 2 - Porch



Max Dimensions: 3'5" x 4'8"  
Calculated Area: 16 sq. ft  
Included: No

Heated: No  
Finished: Yes  
Enclosed: No  
Contiguous: Yes  
Permitted: Yes  
Wet space: No  
Addition: No  
Conversion: No

11 Floor 2 - Bath



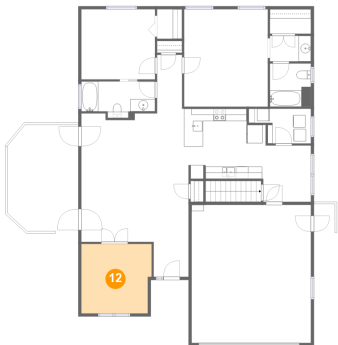
Max Dimensions: 6'8" x 7'0"  
Calculated Area: 47 sq. ft  
Included: Yes

Heated: Yes  
Finished: Yes  
Enclosed: Yes  
Contiguous: Yes  
Permitted: Yes  
Wet space: Yes  
Addition: No  
Conversion: No



1318 Keagy Lane Southwest, Greater Deyerle, Roanoke,  
Roanoke city, Virginia, United States, 24018

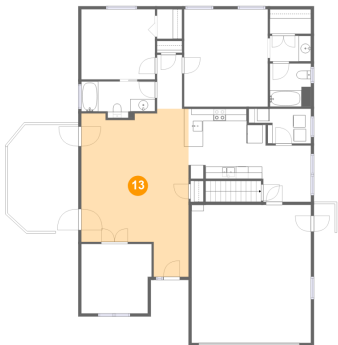
12 Floor 2 - Dining Room



Max Dimensions: 11'5" x 11'3"  
Calculated Area: 125 sq. ft  
Included: Yes

Heated: Yes  
Finished: Yes  
Enclosed: Yes  
Contiguous: Yes  
Permitted: Yes  
Wet space: No  
Addition: No  
Conversion: No

13 Floor 2 - Living Room



Max Dimensions: 17'5" x 27'3"  
Calculated Area: 394 sq. ft  
Included: Yes

Heated: Yes  
Finished: Yes  
Enclosed: Yes  
Contiguous: Yes  
Permitted: Yes  
Wet space: No  
Addition: No  
Conversion: No

14 Floor 2 - Hall



Max Dimensions: 4'1" x 8'9"  
Calculated Area: 36 sq. ft  
Included: Yes

Heated: Yes  
Finished: Yes  
Enclosed: Yes  
Contiguous: Yes  
Permitted: Yes  
Wet space: No  
Addition: No  
Conversion: No

1318 Keagy Lane Southwest, Greater Deyerle, Roanoke,  
Roanoke city, Virginia, United States, 24018

15 Floor 2 - W.I.C.



Max Dimensions: 6'8" x 4'0"  
Calculated Area: 26 sq. ft  
Included: Yes

Heated: Yes  
Finished: Yes  
Enclosed: Yes  
Contiguous: Yes  
Permitted: Yes  
Wet space: No  
Addition: No  
Conversion: No

16 Floor 2 - Bedroom



Max Dimensions: 12'0" x 11'5"  
Calculated Area: 136 sq. ft  
Included: Yes

Heated: Yes  
Finished: Yes  
Enclosed: Yes  
Contiguous: Yes  
Permitted: Yes  
Wet space: No  
Addition: No  
Conversion: No

17 Floor 2 - Breakfast Area



Max Dimensions: 7'9" x 9'2"  
Calculated Area: 71 sq. ft  
Included: Yes

Heated: Yes  
Finished: Yes  
Enclosed: Yes  
Contiguous: Yes  
Permitted: Yes  
Wet space: No  
Addition: No  
Conversion: No

1318 Keagy Lane Southwest, Greater Deyerle, Roanoke,  
Roanoke city, Virginia, United States, 24018

18 Floor 2 - Laundry



Max Dimensions: 9'1" x 5'7"  
Calculated Area: 46 sq. ft  
Included: Yes

Heated: Yes  
Finished: Yes  
Enclosed: Yes  
Contiguous: Yes  
Permitted: Yes  
Wet space: No  
Addition: No  
Conversion: No

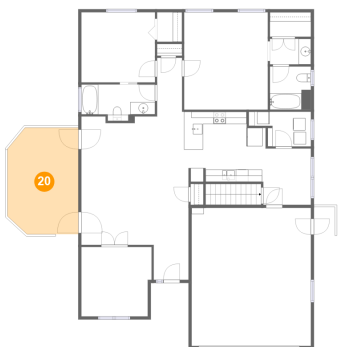
19 Floor 2 - Bath



Max Dimensions: 12'0" x 5'11"  
Calculated Area: 63 sq. ft  
Included: Yes

Heated: Yes  
Finished: Yes  
Enclosed: Yes  
Contiguous: Yes  
Permitted: Yes  
Wet space: Yes  
Addition: No  
Conversion: No

20 Floor 2 - Deck

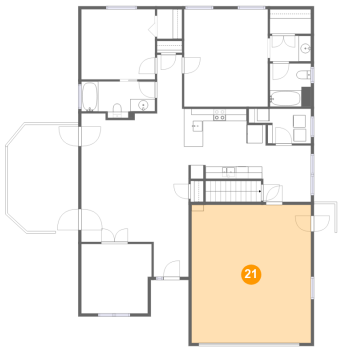


Max Dimensions: 11'6" x 17'3"  
Calculated Area: 189 sq. ft  
Included: No

Heated: No  
Finished: Yes  
Enclosed: No  
Contiguous: Yes  
Permitted: Yes  
Wet space: No  
Addition: No  
Conversion: No

1318 Keagy Lane Southwest, Greater Deyerle, Roanoke,  
Roanoke city, Virginia, United States, 24018

21 Floor 2 - Garage



Max Dimensions: 19'5" x 22'5"  
Calculated Area: 434 sq. ft  
Included: No

Heated: No  
Finished: No  
Enclosed: Yes  
Contiguous: Yes  
Permitted: Yes  
Wet space: No  
Addition: No  
Conversion: No

22 Floor 2 - Primary Bedroom



Max Dimensions: 13'7" x 15'9"  
Calculated Area: 215 sq. ft  
Included: Yes

Heated: Yes  
Finished: Yes  
Enclosed: Yes  
Contiguous: Yes  
Permitted: Yes  
Wet space: No  
Addition: No  
Conversion: No

23 Floor 2 - Bath

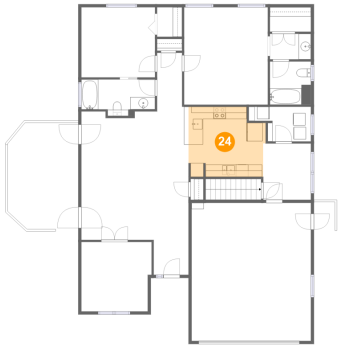


Max Dimensions: 6'8" x 4'2"  
Calculated Area: 28 sq. ft  
Included: Yes

Heated: Yes  
Finished: Yes  
Enclosed: Yes  
Contiguous: Yes  
Permitted: Yes  
Wet space: Yes  
Addition: No  
Conversion: No

1318 Keagy Lane Southwest, Greater Deyerle, Roanoke,  
Roanoke city, Virginia, United States, 24018

**24** Floor 2 - Kitchen



Max Dimensions: 12'6" x 11'5"  
Calculated Area: 131 sq. ft  
Included: Yes

Heated: Yes  
Finished: Yes  
Enclosed: Yes  
Contiguous: Yes  
Permitted: Yes  
Wet space: No  
Addition: No  
Conversion: No