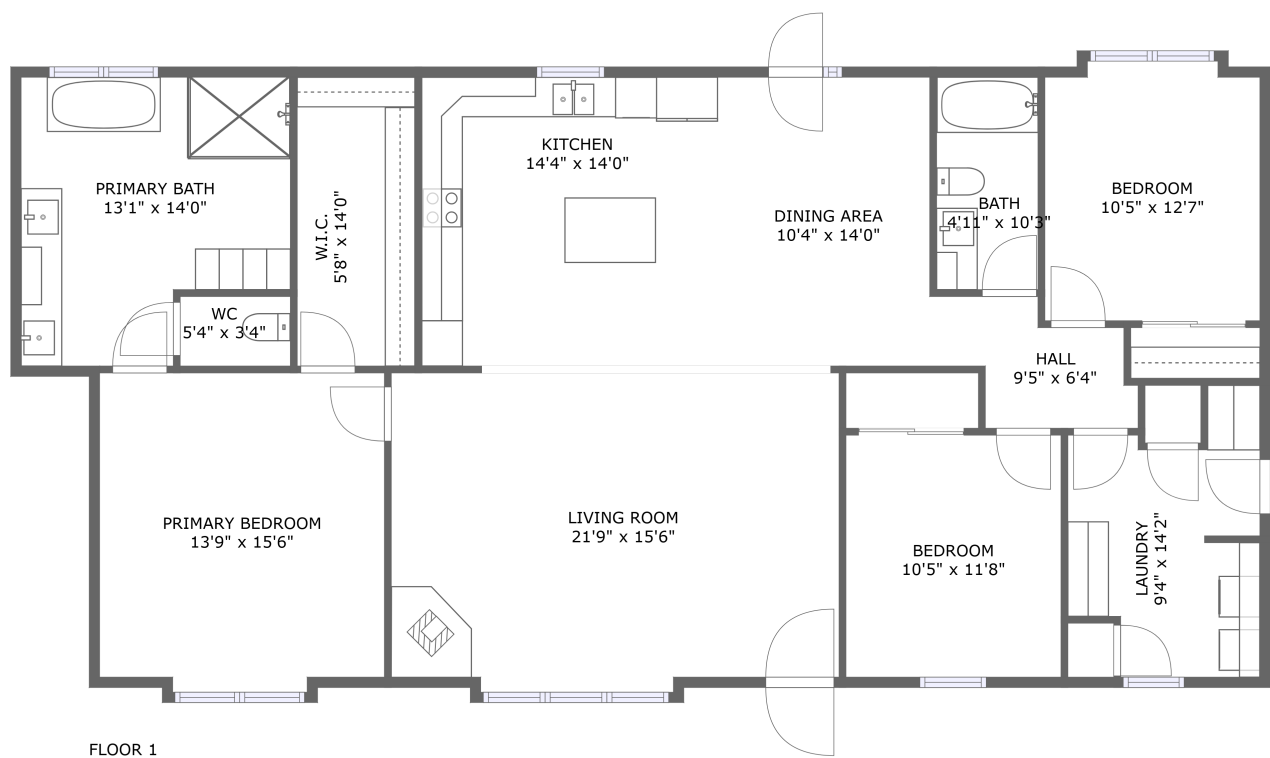




Home report


3210 E 28th St,Scottsbluff,NE,US




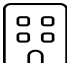
Property summary


**0** Garages


**3** Bedrooms

**2** Bathrooms

**0** Half baths

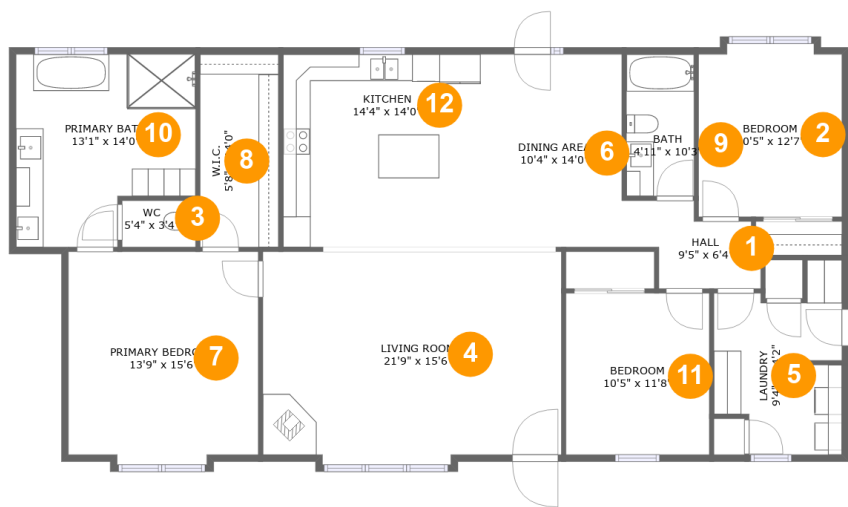
**1** Floors

**1,800** Gross living area sqft

**1,800** Total sqft

Home report

3210 E 28th St,Scottsbluff,NE,US



Room dimensions

Floor 1Total sqft: 1800 Living area: 1800

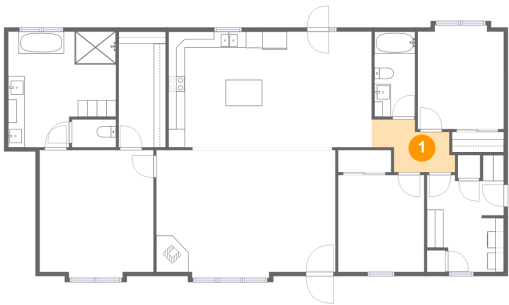
#		Dimensions	sqft	Counted as living area
1	Hall	9'5" x 6'4"	47 sq. ft	Yes
2	Bedroom	10'5" x 12'7"	128 sq. ft	Yes
3	WC	5'4" x 3'4"	18 sq. ft	Yes
4	Living Room	21'9" x 15'6"	327 sq. ft	Yes
5	Laundry	9'4" x 14'2"	105 sq. ft	Yes
6	Dining Area	10'4" x 14'0"	144 sq. ft	Yes
7	Primary Bedroom	13'9" x 15'6"	209 sq. ft	Yes
8	W.I.C.	5'8" x 14'0"	80 sq. ft	Yes
9	Bath	4'11" x 10'3"	51 sq. ft	Yes
10	Primary Bath	13'1" x 14'0"	162 sq. ft	Yes
11	Bedroom	10'5" x 11'8"	122 sq. ft	Yes

Home report

3210 E 28th St,Scottsbluff,NE,US

#		Dimensions	sqft	Counted as living area
12	Kitchen	14'4" x 14'0"	201 sq. ft	Yes

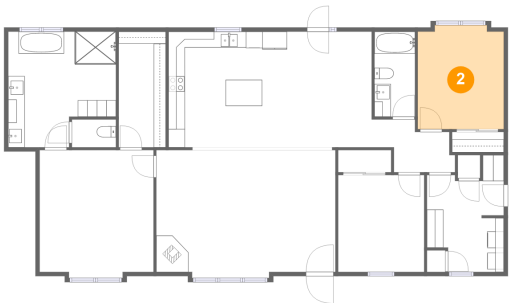
1 Floor 1 - Hall



Dimensions: 9'5" x 6'4"
Area: 47 sq. ft
Counted as living area: Yes

Heated: Yes
Finished: Yes
Enclosed: Yes
Contiguous: Yes
Permitted: Yes
Wet space: No
Addition: No
Conversion: No

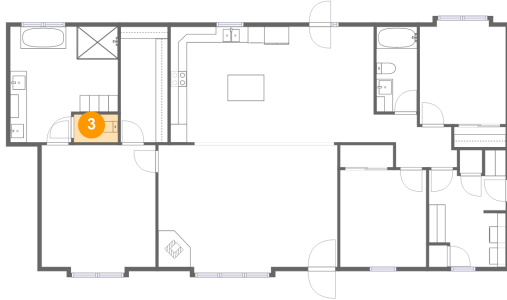
2 Floor 1 - Bedroom



Dimensions: 10'5" x 12'7"
Area: 128 sq. ft
Counted as living area: Yes

Heated: Yes
Finished: Yes
Enclosed: Yes
Contiguous: Yes
Permitted: Yes
Wet space: No
Addition: No
Conversion: No

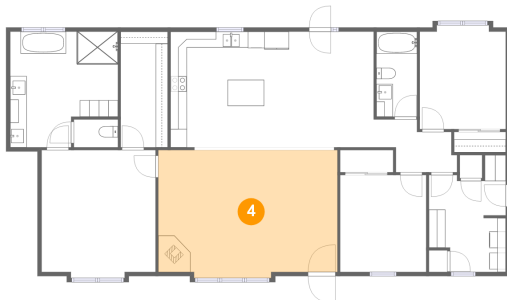
3 Floor 1 - WC



Dimensions: 5'4" x 3'4"
Area: 18 sq. ft
Counted as living area: Yes

Heated: Yes
Finished: Yes
Enclosed: Yes
Contiguous: Yes
Permitted: Yes
Wet space: Yes
Addition: No
Conversion: No

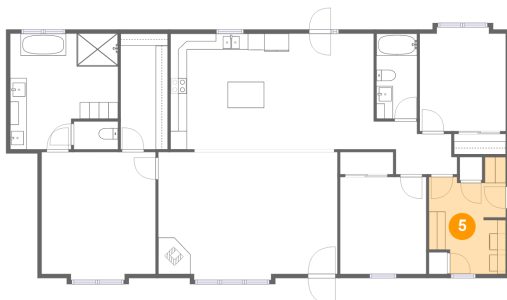
4 Floor 1 - Living Room



Dimensions: 21'9" x 15'6"
Area: 327 sq. ft
Counted as living area: Yes

Heated: Yes
Finished: Yes
Enclosed: Yes
Contiguous: Yes
Permitted: Yes
Wet space: No
Addition: No
Conversion: No

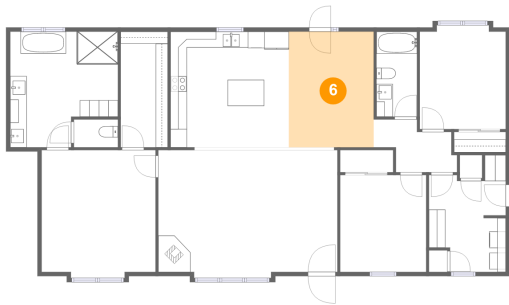
5 Floor 1 - Laundry



Dimensions: 9'4" x 14'2"
Area: 105 sq. ft
Counted as living area: Yes

Heated: Yes
Finished: Yes
Enclosed: Yes
Contiguous: Yes
Permitted: Yes
Wet space: No
Addition: No
Conversion: No

6 Floor 1 - Dining Area



Dimensions: 10'4" x 14'0"
Area: 144 sq. ft
Counted as living area: Yes

Heated: Yes
Finished: Yes
Enclosed: Yes
Contiguous: Yes
Permitted: Yes
Wet space: No
Addition: No
Conversion: No

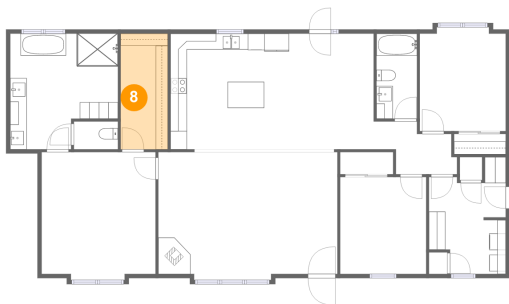
7 Floor 1 - Primary Bedroom



Dimensions: 13'9" x 15'6"
Area: 209 sq. ft
Counted as living area: Yes

Heated: Yes
Finished: Yes
Enclosed: Yes
Contiguous: Yes
Permitted: Yes
Wet space: No
Addition: No
Conversion: No

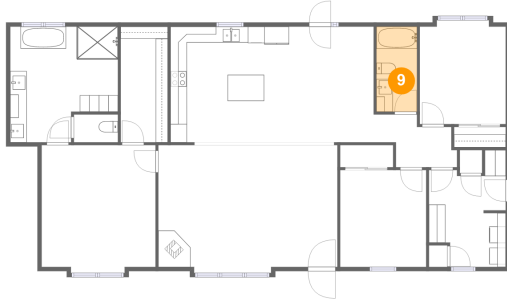
8 Floor 1 - W.I.C.



Dimensions: 5'8" x 14'0"
Area: 80 sq. ft
Counted as living area: Yes

Heated: Yes
Finished: Yes
Enclosed: Yes
Contiguous: Yes
Permitted: Yes
Wet space: No
Addition: No
Conversion: No

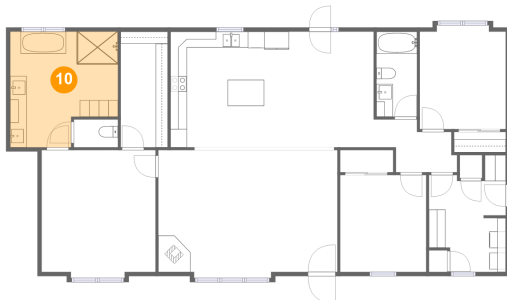
9 Floor 1 - Bath



Dimensions: 4'11" x 10'3"
Area: 51 sq. ft
Counted as living area: Yes

Heated: Yes
Finished: Yes
Enclosed: Yes
Contiguous: Yes
Permitted: Yes
Wet space: Yes
Addition: No
Conversion: No

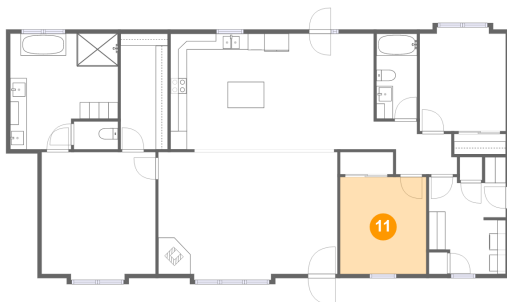
10 Floor 1 - Primary Bath



Dimensions: 13'1" x 14'0"
Area: 162 sq. ft
Counted as living area: Yes

Heated: Yes
Finished: Yes
Enclosed: Yes
Contiguous: Yes
Permitted: Yes
Wet space: Yes
Addition: No
Conversion: No

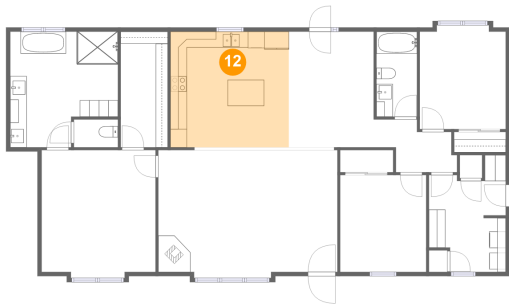
11 Floor 1 - Bedroom



Dimensions: 10'5" x 11'8"
Area: 122 sq. ft
Counted as living area: Yes

Heated: Yes
Finished: Yes
Enclosed: Yes
Contiguous: Yes
Permitted: Yes
Wet space: No
Addition: No
Conversion: No

12 Floor 1 - Kitchen



Dimensions: 14'4" x 14'0"
Area: 201 sq. ft
Counted as living area: Yes

Heated: Yes
Finished: Yes
Enclosed: Yes
Contiguous: Yes
Permitted: Yes
Wet space: No
Addition: No
Conversion: No