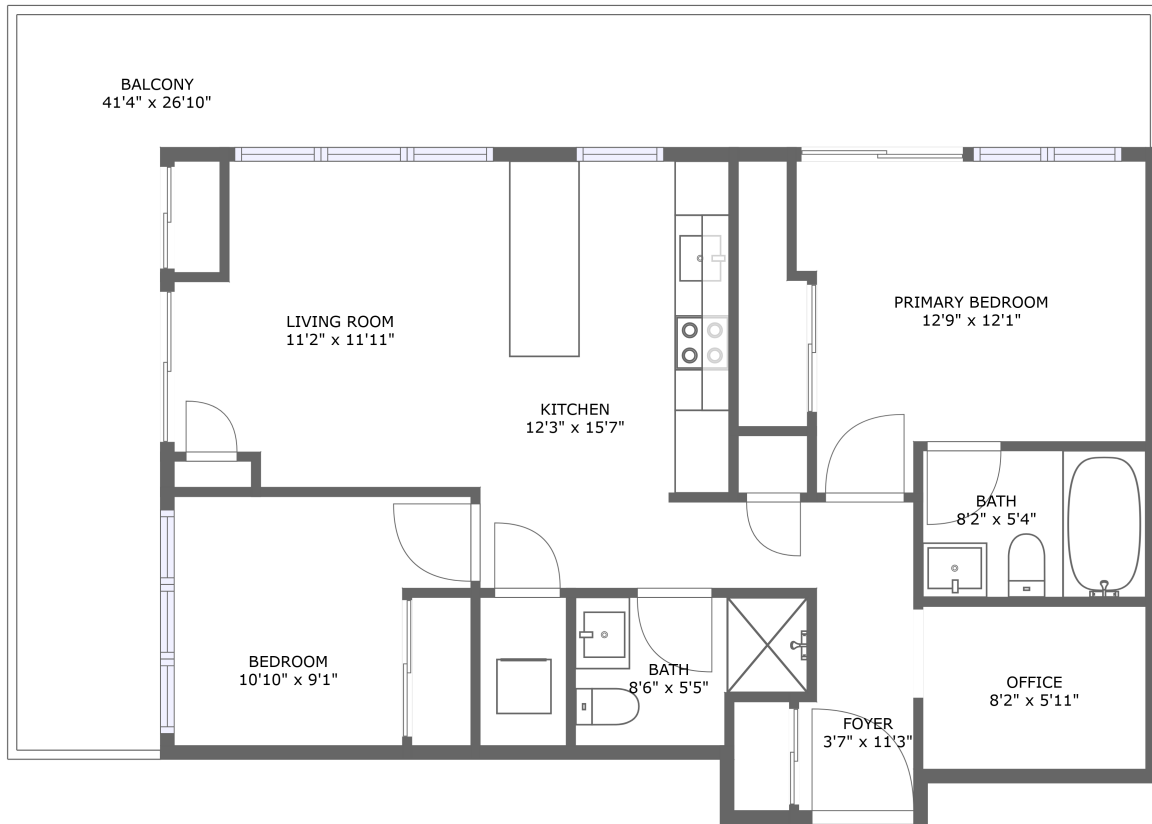



1407-70 Annie Craig Dr, Toronto, ON, CA



FLOOR 1

Property summary

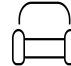
 **0** Garages


 **2** Bedrooms

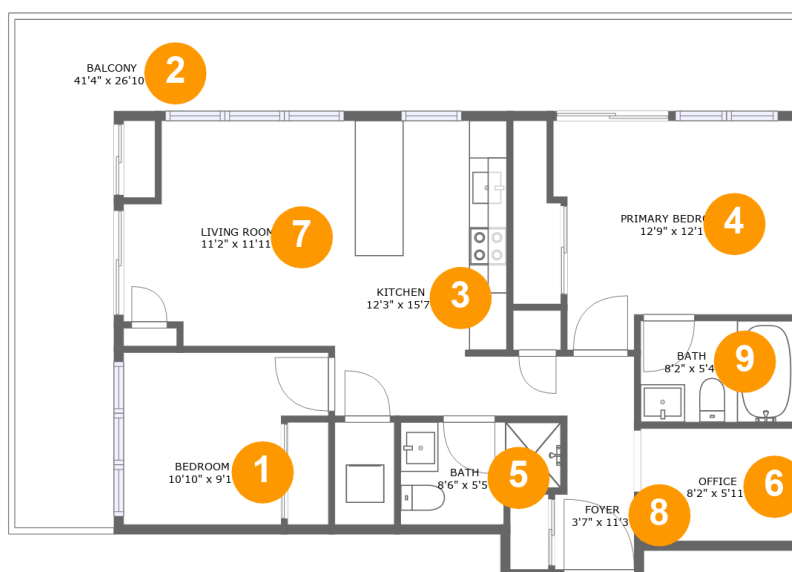
 **2** Bathrooms

 **0** Half baths

 **1** Floors

 **771** Gross living area sqft

 **1,094** Total sqft

1407-70 Annie Craig Dr, Toronto, ON, CA**Room dimensions**

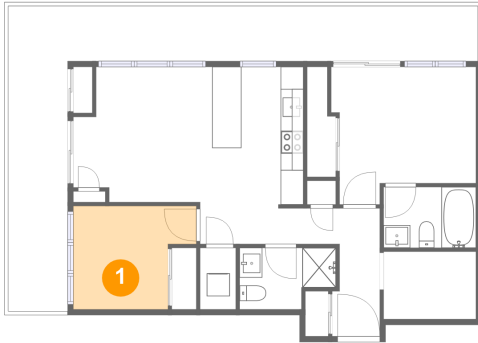
Floor 1

Total sqft: 1094 Living area: 771

#		Dimensions	sqft	Counted as living area
1	Bedroom	10'10" x 9'1"	84 sq. ft	Yes
2	Balcony	41'4" x 26'10"	316 sq. ft	No
3	Kitchen	12'3" x 15'7"	151 sq. ft	Yes
4	Primary Bedroom	12'9" x 12'1"	132 sq. ft	Yes
5	Bath	8'6" x 5'5"	40 sq. ft	Yes
6	Office	8'2" x 5'11"	48 sq. ft	Yes
7	Living Room	11'2" x 11'11"	120 sq. ft	Yes
8	Foyer	3'7" x 11'3"	40 sq. ft	Yes
9	Bath	8'2" x 5'4"	43 sq. ft	Yes

1407-70 Annie Craig Dr, Toronto, ON, CA

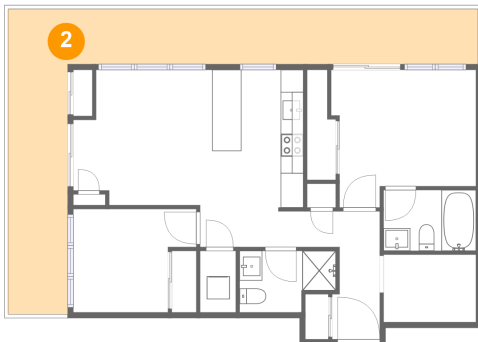
1 Floor 1 - Bedroom



Dimensions: 10'10" x 9'1"
Area: 84 sq. ft
Counted as living area: Yes

Heated: Yes
Finished: Yes
Enclosed: Yes
Contiguous: Yes
Permitted: Yes
Wet space: No
Addition: No
Conversion: No

2 Floor 1 - Balcony

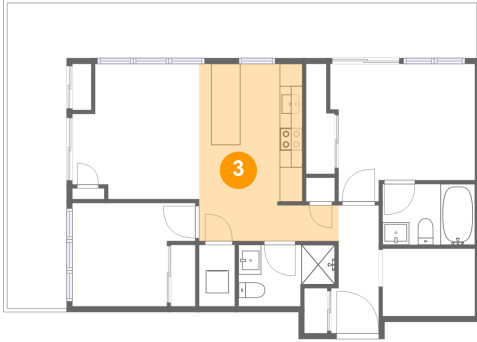


Dimensions: 41'4" x 26'10"
Area: 316 sq. ft
Counted as living area: No

Heated: No
Finished: Yes
Enclosed: No
Contiguous: Yes
Permitted: Yes
Wet space: No
Addition: No
Conversion: No

1407-70 Annie Craig Dr, Toronto, ON, CA

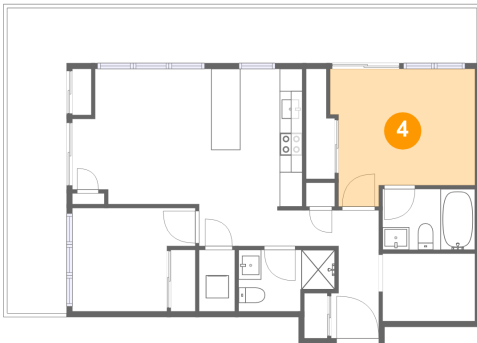
3 Floor 1 - Kitchen



Dimensions: 12'3" x 15'7"
Area: 151 sq. ft
Counted as living area: Yes

Heated: Yes
Finished: Yes
Enclosed: Yes
Contiguous: Yes
Permitted: Yes
Wet space: No
Addition: No
Conversion: No

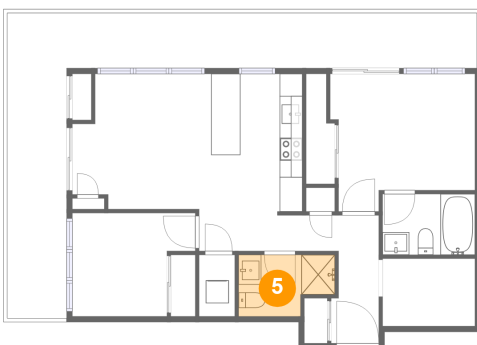
4 Floor 1 - Primary Bedroom



Dimensions: 12'9" x 12'1"
Area: 132 sq. ft
Counted as living area: Yes

Heated: Yes
Finished: Yes
Enclosed: Yes
Contiguous: Yes
Permitted: Yes
Wet space: No
Addition: No
Conversion: No

5 Floor 1 - Bath

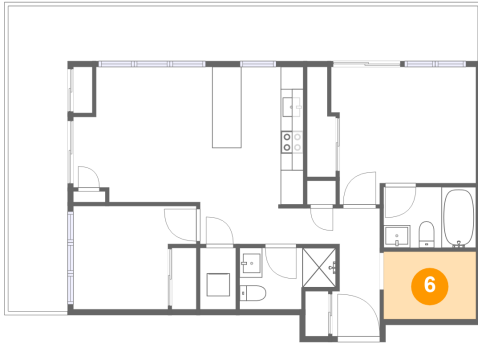


Dimensions: 8'6" x 5'5"
Area: 40 sq. ft
Counted as living area: Yes

Heated: Yes
Finished: Yes
Enclosed: Yes
Contiguous: Yes
Permitted: Yes
Wet space: Yes
Addition: No
Conversion: No

1407-70 Annie Craig Dr, Toronto, ON, CA

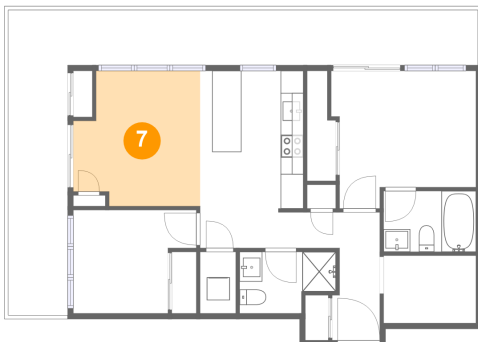
6 Floor 1 - Office



Dimensions: 8'2" x 5'11"
Area: 48 sq. ft
Counted as living area: Yes

Heated: Yes
Finished: Yes
Enclosed: Yes
Contiguous: Yes
Permitted: Yes
Wet space: No
Addition: No
Conversion: No

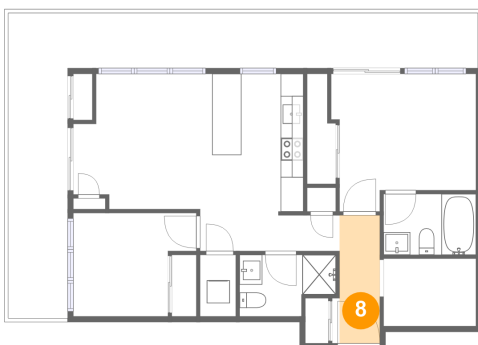
7 Floor 1 - Living Room



Dimensions: 11'2" x 11'11"
Area: 120 sq. ft
Counted as living area: Yes

Heated: Yes
Finished: Yes
Enclosed: Yes
Contiguous: Yes
Permitted: Yes
Wet space: No
Addition: No
Conversion: No

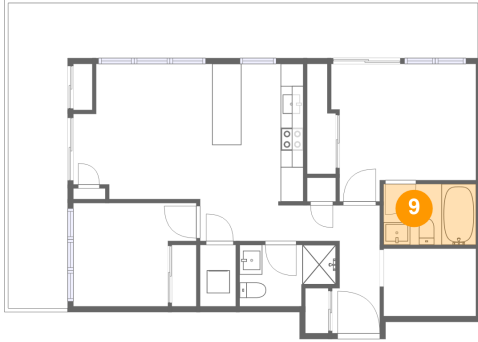
8 Floor 1 - Foyer



Dimensions: 3'7" x 11'3"
Area: 40 sq. ft
Counted as living area: Yes

Heated: Yes
Finished: Yes
Enclosed: Yes
Contiguous: Yes
Permitted: Yes
Wet space: No
Addition: No
Conversion: No

9 Floor 1 - Bath



Dimensions: 8'2" x 5'4"
Area: 43 sq. ft
Counted as living area: Yes

Heated: Yes
Finished: Yes
Enclosed: Yes
Contiguous: Yes
Permitted: Yes
Wet space: Yes
Addition: No
Conversion: No