

Home data report

17 Woodcock Ave,Ajax,ON,CA



Total Area: 1735 sq. ft

1st Floor: 147 sq. ft, 2nd Floor: 1238 sq. ft, 3rd Floor: 350 sq. ft
Excluded: Room 49 sq. ft, Basement 1017 sq. ft, Hall 57 sq. ft, Garage 312 sq. ft, Fireplace 5 sq. ft, Open to below 51 sq. ft, Walls: 246 sq. ft

Property summary

 **3** Floors

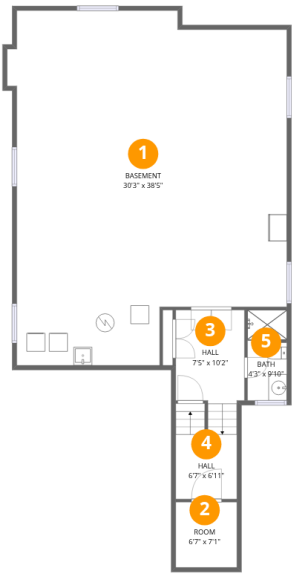
 **3** Bedrooms

 **3** Bathrooms

 **1** Garages

Home data report

17 Woodcock Ave,Ajax,ON,CA



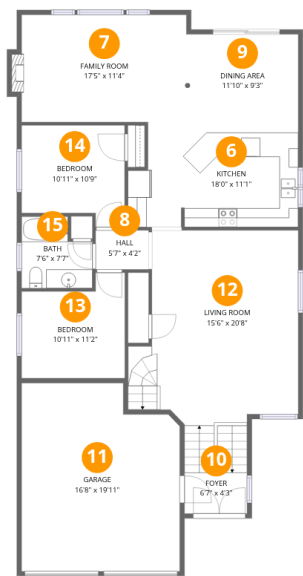
Room dimensions

Floor 1 Total:147sqft Excluded: 1123sqft

#		Dimensions	sqft	Counted as living area
1	Basement	30'3" x 38'5"	1016 sq. ft	No
2	Room	6'7" x 7'1"	47 sq. ft	No
3	Hall	7'5" x 10'2"	85 sq. ft	Yes
4	Hall	6'7" x 6'11"	56 sq. ft	No
5	Bath	4'3" x 9'10"	41 sq. ft	Yes

Home data report

17 Woodcock Ave,Ajax,ON,CA



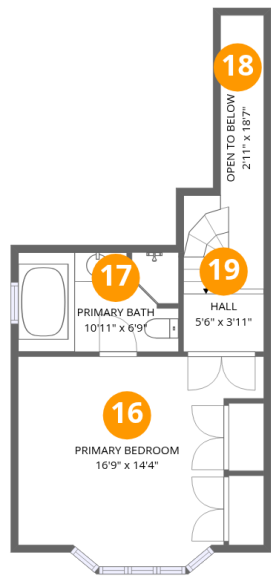
Room dimensions

Floor 2 Total:1238sqft Excluded: 317sqft

#		Dimensions	sqft	Counted as living area
6	Kitchen	18'0" x 11'1"	189 sq. ft	Yes
7	Family Room	17'5" x 11'4"	202 sq. ft	Yes
8	Hall	5'7" x 4'2"	23 sq. ft	Yes
9	Dining Area	11'10" x 9'3"	110 sq. ft	Yes
10	Foyer	6'7" x 4'3"	44 sq. ft	Yes
11	Garage	16'8" x 19'11"	312 sq. ft	No
12	Living Room	15'6" x 20'8"	343 sq. ft	Yes
13	Bedroom	10'11" x 11'2"	106 sq. ft	Yes
14	Bedroom	10'11" x 10'9"	106 sq. ft	Yes
15	Bath	7'6" x 7'7"	50 sq. ft	Yes

Home data report

17 Woodcock Ave,Ajax,ON,CA



Room dimensions

Floor 3 Total:350sqft Excluded: 51sqft

#		Dimensions	sqft	Counted as living area
16	Primary Bedroom	16'9" x 14'4"	199 sq. ft	Yes
17	Primary Bath	10'11" x 6'9"	73 sq. ft	Yes
18	Open To Below	2'11" x 18'7"	51 sq. ft	No
19	Hall	5'6" x 3'11"	43 sq. ft	Yes

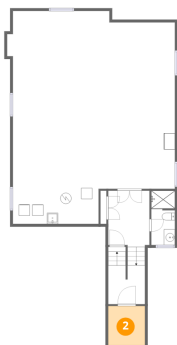
1 Floor 1 - Basement



Dimensions: 30'3" x 38'5"
Area: 1016 sq. ft
Counted as living area: No

Heated: Yes
Finished: No
Enclosed: Yes
Contiguous: Yes
Permitted: Yes
Wet space: No
Addition: No
Conversion: No

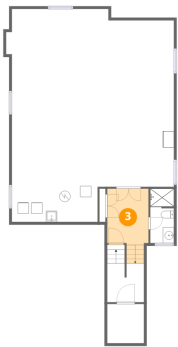
2 Floor 1 - Room



Dimensions: 6'7" x 7'1"
Area: 47 sq. ft
Counted as living area: No

Heated: Yes
Finished: No
Enclosed: Yes
Contiguous: Yes
Permitted: Yes
Wet space: No
Addition: No
Conversion: No

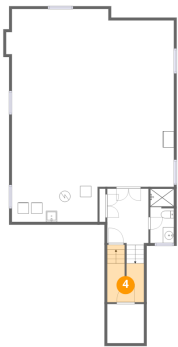
3 Floor 1 - Hall



Dimensions: 7'5" x 10'2"
Area: 85 sq. ft
Counted as living area: Yes

Heated: Yes
Finished: Yes
Enclosed: Yes
Contiguous: Yes
Permitted: Yes
Wet space: No
Addition: No
Conversion: No

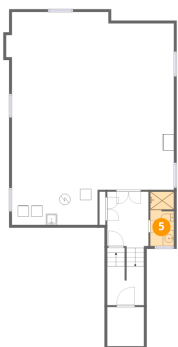
4 Floor 1 - Hall



Dimensions: 6'7" x 6'11"
Area: 56 sq. ft
Counted as living area: No

Heated: Yes
Finished: No
Enclosed: Yes
Contiguous: Yes
Permitted: Yes
Wet space: No
Addition: No
Conversion: No

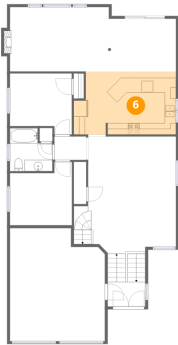
5 Floor 1 - Bath



Dimensions: 4'3" x 9'10"
Area: 41 sq. ft
Counted as living area: Yes

Heated: Yes
Finished: Yes
Enclosed: Yes
Contiguous: Yes
Permitted: Yes
Wet space: Yes
Addition: No
Conversion: No

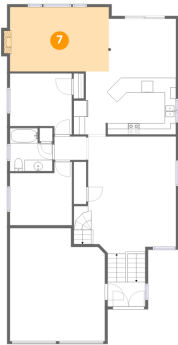
6 Floor 2 - Kitchen



Dimensions: 18'0" x 11'1"
Area: 189 sq. ft
Counted as living area: Yes

Heated: Yes
Finished: Yes
Enclosed: Yes
Contiguous: Yes
Permitted: Yes
Wet space: No
Addition: No
Conversion: No

7 Floor 2 - Family Room



Dimensions: 17'5" x 11'4"
Area: 202 sq. ft
Counted as living area: Yes

Heated: Yes
Finished: Yes
Enclosed: Yes
Contiguous: Yes
Permitted: Yes
Wet space: No
Addition: No
Conversion: No

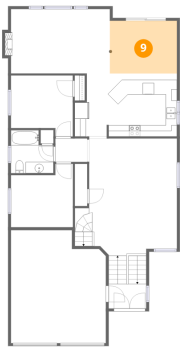
8 Floor 2 - Hall



Dimensions: 5'7" x 4'2"
Area: 23 sq. ft
Counted as living area: Yes

Heated: Yes
Finished: Yes
Enclosed: Yes
Contiguous: Yes
Permitted: Yes
Wet space: No
Addition: No
Conversion: No

9 Floor 2 - Dining Area



Dimensions: 11'10" x 9'3"
Area: 110 sq. ft
Counted as living area: Yes

Heated: Yes
Finished: Yes
Enclosed: Yes
Contiguous: Yes
Permitted: Yes
Wet space: No
Addition: No
Conversion: No

10 Floor 2 - Foyer



Dimensions: 6'7" x 4'3"
Area: 44 sq. ft
Counted as living area: Yes

Heated: Yes
Finished: Yes
Enclosed: Yes
Contiguous: Yes
Permitted: Yes
Wet space: No
Addition: No
Conversion: No

11 Floor 2 - Garage



Dimensions: 16'8" x 19'11"
Area: 312 sq. ft
Counted as living area: No

Heated: No
Finished: No
Enclosed: Yes
Contiguous: Yes
Permitted: Yes
Wet space: No
Addition: No
Conversion: No

12 Floor 2 - Living Room



Dimensions: 15'6" x 20'8"
Area: 343 sq. ft
Counted as living area: Yes

Heated: Yes
Finished: Yes
Enclosed: Yes
Contiguous: Yes
Permitted: Yes
Wet space: No
Addition: No
Conversion: No

13 Floor 2 - Bedroom



Dimensions: 10'11" x 11'2"
Area: 106 sq. ft
Counted as living area: Yes

Heated: Yes
Finished: Yes
Enclosed: Yes
Contiguous: Yes
Permitted: Yes
Wet space: No
Addition: No
Conversion: No

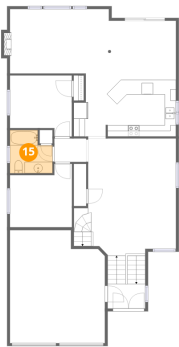
14 Floor 2 - Bedroom



Dimensions: 10'11" x 10'9"
Area: 106 sq. ft
Counted as living area: Yes

Heated: Yes
Finished: Yes
Enclosed: Yes
Contiguous: Yes
Permitted: Yes
Wet space: No
Addition: No
Conversion: No

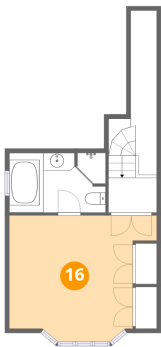
15 Floor 2 - Bath



Dimensions: 7'6" x 7'7"
Area: 50 sq. ft
Counted as living area: Yes

Heated: Yes
Finished: Yes
Enclosed: Yes
Contiguous: Yes
Permitted: Yes
Wet space: Yes
Addition: No
Conversion: No

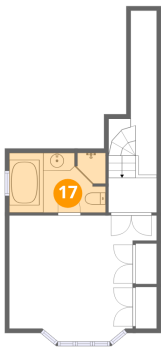
16 Floor 3 - Primary Bedroom



Dimensions: 16'9" x 14'4"
Area: 199 sq. ft
Counted as living area: Yes

Heated: Yes
Finished: Yes
Enclosed: Yes
Contiguous: Yes
Permitted: Yes
Wet space: No
Addition: No
Conversion: No

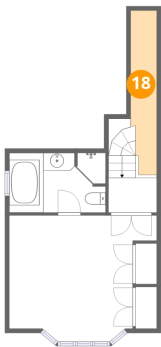
17 Floor 3 - Primary Bath



Dimensions: 10'11" x 6'9"
Area: 73 sq. ft
Counted as living area: Yes

Heated: Yes
Finished: Yes
Enclosed: Yes
Contiguous: Yes
Permitted: Yes
Wet space: Yes
Addition: No
Conversion: No

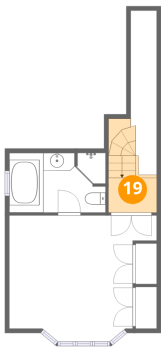
18 Floor 3 - Open To Below



Dimensions: 2'11" x 18'7"
Area: 51 sq. ft
Counted as living area: No

Heated: No
Finished: No
Enclosed: No
Contiguous: Yes
Permitted: No
Wet space: No
Addition: No
Conversion: No

19 Floor 3 - Hall



Dimensions: 5'6" x 3'11"
Area: 43 sq. ft
Counted as living area: Yes

Heated: Yes
Finished: Yes
Enclosed: Yes
Contiguous: Yes
Permitted: Yes
Wet space: No
Addition: No
Conversion: No