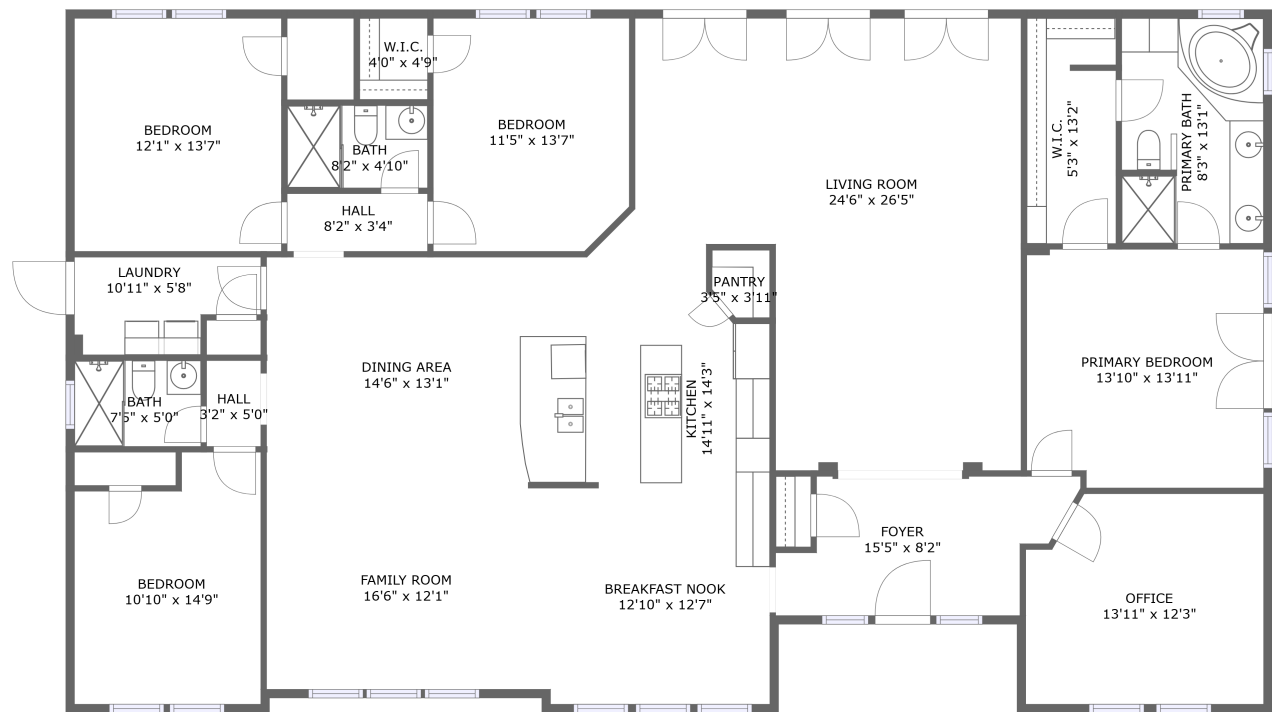


Home report

5375 Vineyard Drive, Paso Robles, San Luis Obispo County,
California, United States, 93446



FLOOR 1


Total Area: 2805 sq. ft

Floor 1: 2805 sq. ft

Excluded:

Property summary

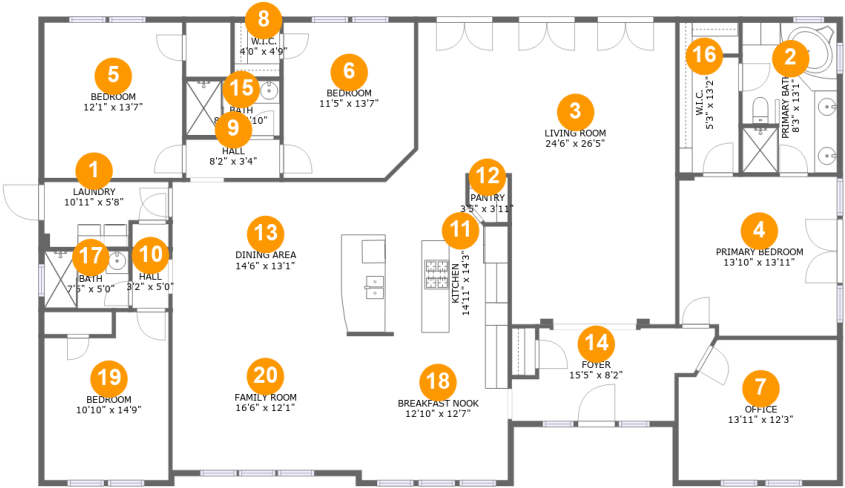
 1 Floors

 4 Bedrooms

 3 Bathrooms

Home report

5375 Vineyard Drive, Paso Robles, San Luis Obispo County,
California, United States, 93446



Room dimensions

Floor 1 Total:2805sqft Excluded: 0sqft

#		Max Dimensions	sqft	Included
1	Laundry	10'11" x 5'8"	54 sq. ft	Yes
2	Primary Bath	8'3" x 13'1"	108 sq. ft	Yes
3	Living Room	24'6" x 26'5"	489 sq. ft	Yes
4	Primary Bedroom	13'10" x 13'11"	189 sq. ft	Yes
5	Bedroom	12'1" x 13'7"	164 sq. ft	Yes
6	Bedroom	11'5" x 13'7"	152 sq. ft	Yes
7	Office	13'11" x 12'3"	163 sq. ft	Yes
8	W.I.C.	4'0" x 4'9"	19 sq. ft	Yes
9	Hall	8'2" x 3'4"	28 sq. ft	Yes
10	Hall	3'2" x 5'0"	16 sq. ft	Yes
11	Kitchen	14'11" x 14'3"	192 sq. ft	Yes

Home report

**5375 Vineyard Drive, Paso Robles, San Luis Obispo County,
California, United States, 93446**

#		Max Dimensions	sqft	Included
12	Pantry	3'5" x 3'11"	12 sq. ft	Yes
13	Dining Area	14'6" x 13'1"	190 sq. ft	Yes
14	Foyer	15'5" x 8'2"	115 sq. ft	Yes
15	Bath	8'2" x 4'10"	39 sq. ft	Yes
16	W.I.C.	5'3" x 13'2"	68 sq. ft	Yes
17	Bath	7'5" x 5'0"	37 sq. ft	Yes
18	Breakfast Nook	12'10" x 12'7"	162 sq. ft	Yes
19	Bedroom	10'10" x 14'9"	146 sq. ft	Yes
20	Family Room	16'6" x 12'1"	200 sq. ft	Yes

5375 Vineyard Drive, Paso Robles, San Luis Obispo County,
California, United States, 93446

1 Floor 1 - Laundry



Max Dimensions: 10'11" x 5'8"
Calculated Area: 54 sq. ft
Included: Yes

Heated: Yes
Finished: Yes
Enclosed: Yes
Contiguous: Yes
Permitted: Yes
Wet space: No
Addition: No
Conversion: No

2 Floor 1 - Primary Bath



Max Dimensions: 8'3" x 13'1"
Calculated Area: 108 sq. ft
Included: Yes

Heated: Yes
Finished: Yes
Enclosed: Yes
Contiguous: Yes
Permitted: Yes
Wet space: Yes
Addition: No
Conversion: No

5375 Vineyard Drive, Paso Robles, San Luis Obispo County,
California, United States, 93446

3 Floor 1 - Living Room



Max Dimensions: 24'6" x 26'5"
Calculated Area: 489 sq. ft
Included: Yes

Heated: Yes
Finished: Yes
Enclosed: Yes
Contiguous: Yes
Permitted: Yes
Wet space: No
Addition: No
Conversion: No

4 Floor 1 - Primary Bedroom



Max Dimensions: 13'10" x 13'11"
Calculated Area: 189 sq. ft
Included: Yes

Heated: Yes
Finished: Yes
Enclosed: Yes
Contiguous: Yes
Permitted: Yes
Wet space: No
Addition: No
Conversion: No

5 Floor 1 - Bedroom



Max Dimensions: 12'1" x 13'7"
Calculated Area: 164 sq. ft
Included: Yes

Heated: Yes
Finished: Yes
Enclosed: Yes
Contiguous: Yes
Permitted: Yes
Wet space: No
Addition: No
Conversion: No

5375 Vineyard Drive, Paso Robles, San Luis Obispo County,
California, United States, 93446

6 Floor 1 - Bedroom



Max Dimensions: 11'5" x 13'7"
Calculated Area: 152 sq. ft
Included: Yes

Heated: Yes
Finished: Yes
Enclosed: Yes
Contiguous: Yes
Permitted: Yes
Wet space: No
Addition: No
Conversion: No

7 Floor 1 - Office



Max Dimensions: 13'11" x 12'3"
Calculated Area: 163 sq. ft
Included: Yes

Heated: Yes
Finished: Yes
Enclosed: Yes
Contiguous: Yes
Permitted: Yes
Wet space: No
Addition: No
Conversion: No

8 Floor 1 - W.I.C.

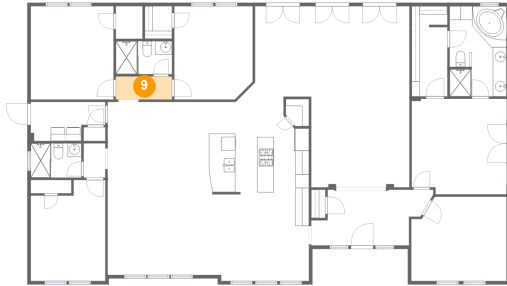


Max Dimensions: 4'0" x 4'9"
Calculated Area: 19 sq. ft
Included: Yes

Heated: Yes
Finished: Yes
Enclosed: Yes
Contiguous: Yes
Permitted: Yes
Wet space: No
Addition: No
Conversion: No

5375 Vineyard Drive, Paso Robles, San Luis Obispo County,
California, United States, 93446

9 Floor 1 - Hall



Max Dimensions: 8'2" x 3'4"
Calculated Area: 28 sq. ft
Included: Yes

Heated: Yes
Finished: Yes
Enclosed: Yes
Contiguous: Yes
Permitted: Yes
Wet space: No
Addition: No
Conversion: No

10 Floor 1 - Hall



Max Dimensions: 3'2" x 5'0"
Calculated Area: 16 sq. ft
Included: Yes

Heated: Yes
Finished: Yes
Enclosed: Yes
Contiguous: Yes
Permitted: Yes
Wet space: No
Addition: No
Conversion: No

11 Floor 1 - Kitchen



Max Dimensions: 14'11" x 14'3"
Calculated Area: 192 sq. ft
Included: Yes

Heated: Yes
Finished: Yes
Enclosed: Yes
Contiguous: Yes
Permitted: Yes
Wet space: No
Addition: No
Conversion: No

5375 Vineyard Drive, Paso Robles, San Luis Obispo County,
California, United States, 93446

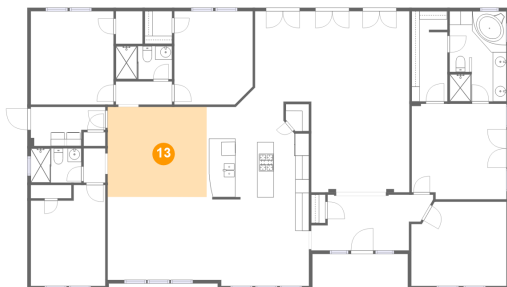
12 Floor 1 - Pantry



Max Dimensions: 3'5" x 3'11"
Calculated Area: 12 sq. ft
Included: Yes

Heated: Yes
Finished: Yes
Enclosed: Yes
Contiguous: Yes
Permitted: Yes
Wet space: No
Addition: No
Conversion: No

13 Floor 1 - Dining Area



Max Dimensions: 14'6" x 13'1"
Calculated Area: 190 sq. ft
Included: Yes

Heated: Yes
Finished: Yes
Enclosed: Yes
Contiguous: Yes
Permitted: Yes
Wet space: No
Addition: No
Conversion: No

14 Floor 1 - Foyer



Max Dimensions: 15'5" x 8'2"
Calculated Area: 115 sq. ft
Included: Yes

Heated: Yes
Finished: Yes
Enclosed: Yes
Contiguous: Yes
Permitted: Yes
Wet space: No
Addition: No
Conversion: No

Home report

5375 Vineyard Drive, Paso Robles, San Luis Obispo County,
California, United States, 93446

15 Floor 1 - Bath



Max Dimensions: 8'2" x 4'10"
Calculated Area: 39 sq. ft
Included: Yes

Heated: Yes
Finished: Yes
Enclosed: Yes
Contiguous: Yes
Permitted: Yes
Wet space: Yes
Addition: No
Conversion: No

16 Floor 1 - W.I.C.



Max Dimensions: 5'3" x 13'2"
Calculated Area: 68 sq. ft
Included: Yes

Heated: Yes
Finished: Yes
Enclosed: Yes
Contiguous: Yes
Permitted: Yes
Wet space: No
Addition: No
Conversion: No

17 Floor 1 - Bath

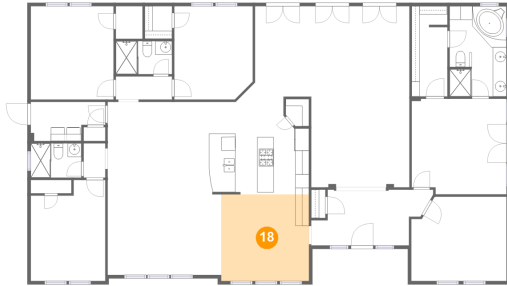


Max Dimensions: 7'5" x 5'0"
Calculated Area: 37 sq. ft
Included: Yes

Heated: Yes
Finished: Yes
Enclosed: Yes
Contiguous: Yes
Permitted: Yes
Wet space: Yes
Addition: No
Conversion: No

5375 Vineyard Drive, Paso Robles, San Luis Obispo County,
California, United States, 93446

18 Floor 1 - Breakfast Nook



Max Dimensions: 12'10" x 12'7"
Calculated Area: 162 sq. ft
Included: Yes

Heated: Yes
Finished: Yes
Enclosed: Yes
Contiguous: Yes
Permitted: Yes
Wet space: No
Addition: No
Conversion: No

19 Floor 1 - Bedroom



Max Dimensions: 10'10" x 14'9"
Calculated Area: 146 sq. ft
Included: Yes

Heated: Yes
Finished: Yes
Enclosed: Yes
Contiguous: Yes
Permitted: Yes
Wet space: No
Addition: No
Conversion: No

20 Floor 1 - Family Room



Max Dimensions: 16'6" x 12'1"
Calculated Area: 200 sq. ft
Included: Yes

Heated: Yes
Finished: Yes
Enclosed: Yes
Contiguous: Yes
Permitted: Yes
Wet space: No
Addition: No
Conversion: No