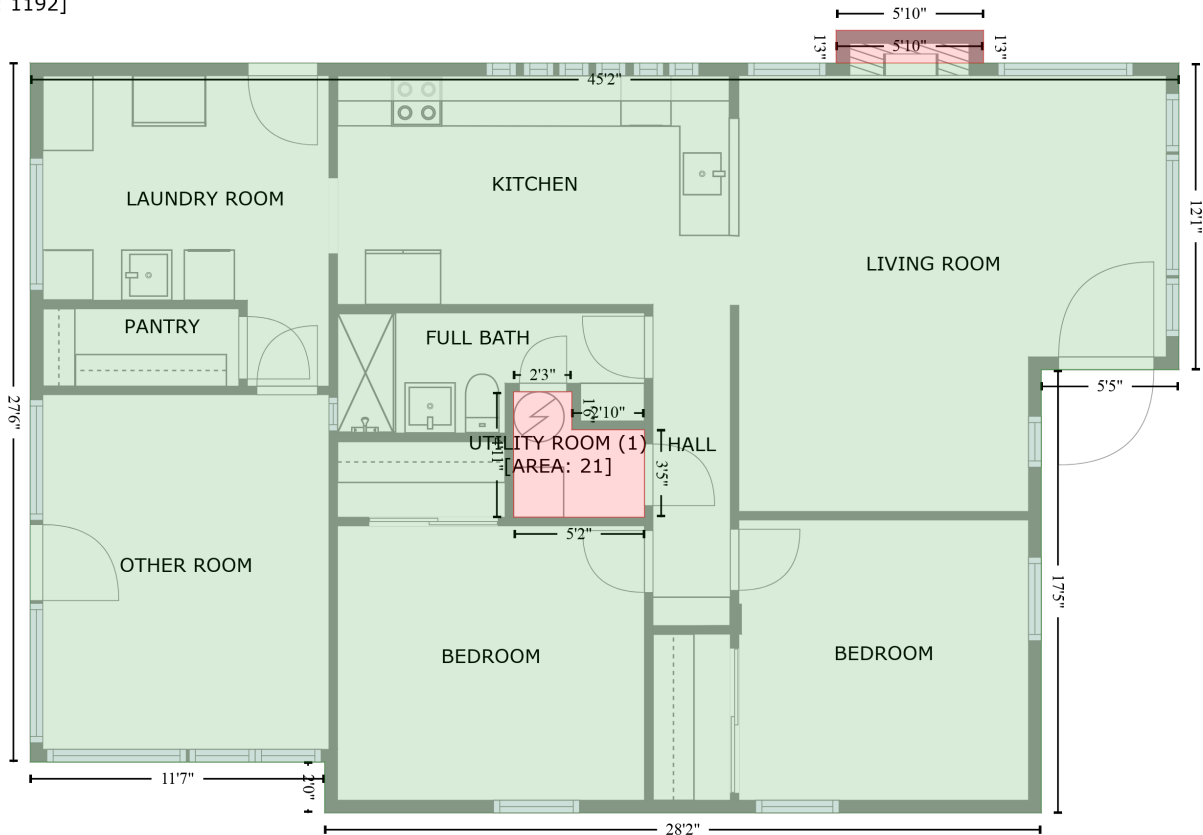


5960 W 36th Pl, Wheat Ridge, CO, US

Gross Living Area: 1192 sq. ft

FLOOR 1
[AREA: 1192]

FIREPLACE (2)
[AREA: 7]



Space	Area (sq. ft)	Calculation <small>Coordinate Polygon Area Algorithm using inches</small>
FLOOR 1 (Living area)	1192	$-\left((471.2 + 471.2) * (100.4 - 245.1) + (471.2 + 406.2) * (245.1 - 245.1) + (406.2 + 406.2) * (245.1 - 454.2) + (406.2 + 68.3) * (454.2 - 454.2) + (68.3 + 68.3) * (454.2 - 430.2) + (68.3 + -70.7) * (430.2 - 430.2) + (-70.7 + -70.7) * (430.2 - 100.4) + (-70.7 + 471.2) * (100.4 - 100.4)\right) * 0.5 * 0.00694 + -\left((184.8 + 157.3) * (255.5 - 255.5) + (157.3 + 157.3) * (255.5 - 314.7) + (157.3 + 219.1) * (314.7 - 314.7) + (219.1 + 219.1) * (314.7 - 273.4) + (219.1 + 184.8) * (273.4 - 273.4) + (184.8 + 184.8) * (273.4 - 255.5)\right) * 0.5 * 0.00694$
UTILITY ROOM (Non-living area)	21	$-\left((184.8 + 184.8) * (255.5 - 273.4) + (184.8 + 219.1) * (273.4 - 273.4) + (219.1 + 219.1) * (273.4 - 314.7) + (219.1 + 157.3) * (314.7 - 314.7) + (157.3 + 157.3) * (314.7 - 255.5) + (157.3 + 184.8) * (255.5 - 255.5)\right) * 0.5 * 0.00694$
FIREPLACE (Non-living area)	7	$-\left((379 + 379) * (85.1 - 100.4) + (379 + 309.5) * (100.4 - 100.4) + (309.5 + 309.5) * (100.4 - 85.1) + (309.5 + 379) * (85.1 - 85.1)\right) * 0.5 * 0.00694$