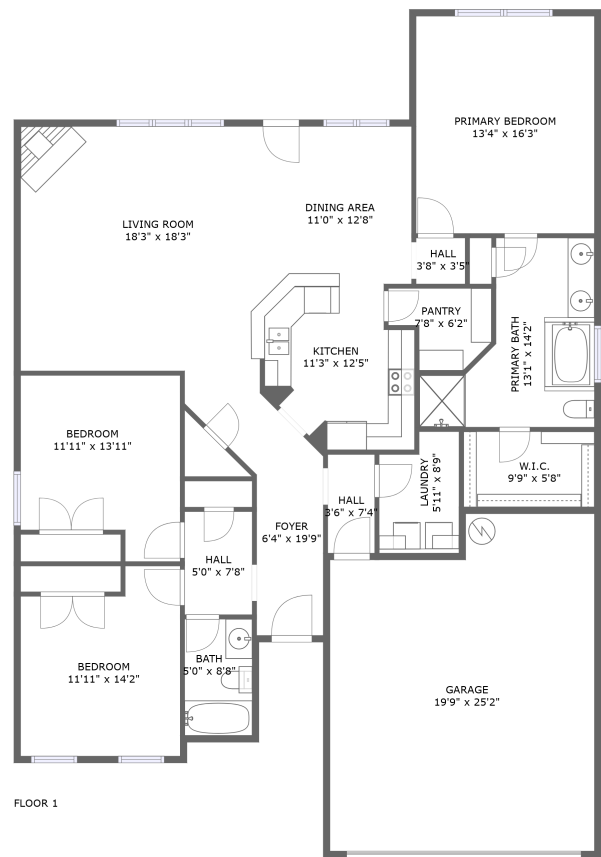




Home report


210 Wolf Creek Trail, Huntsville, Madison County, Alabama,  
United States, 35824





Property summary


 **1** Garages


 **3** Bedrooms

 **2** Bathrooms

 **0** Half baths

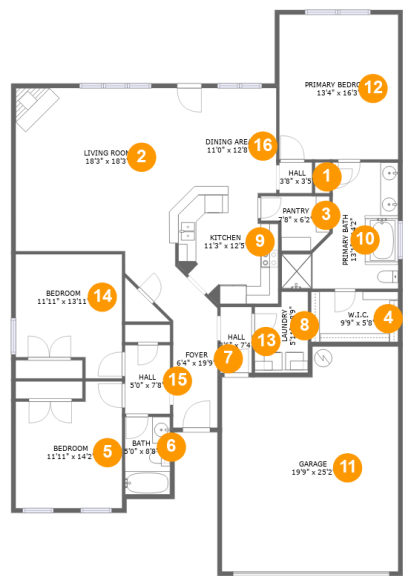
 **1** Floors

 **1,974** Gross living area sqft

 **2,320** Total sqft

Home report

210 Wolf Creek Trail, Huntsville, Madison County, Alabama,  
United States, 35824



Room dimensions

Floor 1 Total sqft: 2320    Living area: 1974

#		Max Dimensions	sqft	Included
1	Hall	3'8" x 3'5"	13 sq. ft	Yes
2	Living Room	18'3" x 18'3"	333 sq. ft	Yes
3	Pantry	7'8" x 6'2"	37 sq. ft	Yes
4	W.I.C.	9'9" x 5'8"	55 sq. ft	Yes
5	Bedroom	11'11" x 14'2"	152 sq. ft	Yes
6	Bath	5'0" x 8'8"	44 sq. ft	Yes
7	Foyer	6'4" x 19'9"	107 sq. ft	Yes
8	Laundry	5'11" x 8'9"	49 sq. ft	Yes
9	Kitchen	11'3" x 12'5"	121 sq. ft	Yes
10	Primary Bath	13'1" x 14'2"	129 sq. ft	Yes
11	Garage	19'9" x 25'2"	463 sq. ft	No

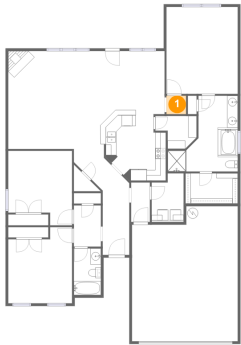
## Home report

**210 Wolf Creek Trail, Huntsville, Madison County, Alabama,  
United States, 35824**

#		Max Dimensions	sqft	Included
12	Primary Bedroom	13'4" x 16'3"	216 sq. ft	Yes
13	Hall	3'6" x 7'4"	26 sq. ft	Yes
14	Bedroom	11'11" x 13'11"	147 sq. ft	Yes
15	Hall	5'0" x 7'8"	39 sq. ft	Yes
16	Dining Area	11'0" x 12'8"	130 sq. ft	Yes

210 Wolf Creek Trail, Huntsville, Madison County, Alabama,  
United States, 35824

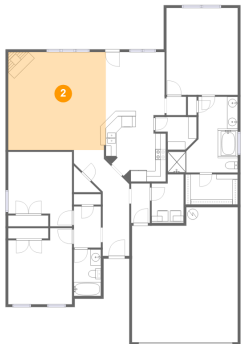
1 Floor 1 - Hall



Max Dimensions: 3'8" x 3'5"  
Calculated Area: 13 sq. ft  
Included: Yes

Heated: Yes  
Finished: Yes  
Enclosed: Yes  
Contiguous: Yes  
Permitted: Yes  
Wet space: No  
Addition: No  
Conversion: No

2 Floor 1 - Living Room

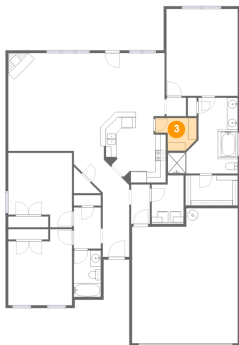


Max Dimensions: 18'3" x 18'3"  
Calculated Area: 333 sq. ft  
Included: Yes

Heated: Yes  
Finished: Yes  
Enclosed: Yes  
Contiguous: Yes  
Permitted: Yes  
Wet space: No  
Addition: No  
Conversion: No

210 Wolf Creek Trail, Huntsville, Madison County, Alabama,  
United States, 35824

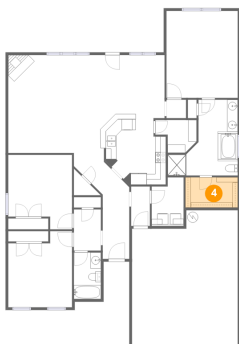
3 Floor 1 - Pantry



Max Dimensions: 7'8" x 6'2"  
Calculated Area: 37 sq. ft  
Included: Yes

Heated: Yes  
Finished: Yes  
Enclosed: Yes  
Contiguous: Yes  
Permitted: Yes  
Wet space: No  
Addition: No  
Conversion: No

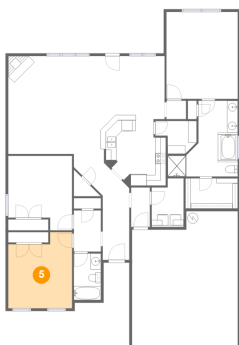
4 Floor 1 - W.I.C.



Max Dimensions: 9'9" x 5'8"  
Calculated Area: 55 sq. ft  
Included: Yes

Heated: Yes  
Finished: Yes  
Enclosed: Yes  
Contiguous: Yes  
Permitted: Yes  
Wet space: No  
Addition: No  
Conversion: No

5 Floor 1 - Bedroom

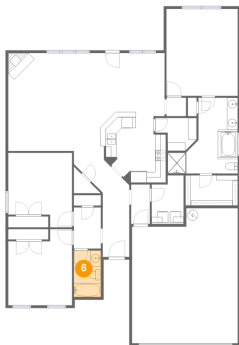


Max Dimensions: 11'11" x 14'2"  
Calculated Area: 152 sq. ft  
Included: Yes

Heated: Yes  
Finished: Yes  
Enclosed: Yes  
Contiguous: Yes  
Permitted: Yes  
Wet space: No  
Addition: No  
Conversion: No

210 Wolf Creek Trail, Huntsville, Madison County, Alabama,  
United States, 35824

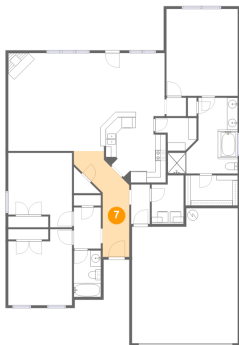
6 Floor 1 - Bath



Max Dimensions: 5'0" x 8'8"  
Calculated Area: 44 sq. ft  
Included: Yes

Heated: Yes  
Finished: Yes  
Enclosed: Yes  
Contiguous: Yes  
Permitted: Yes  
Wet space: Yes  
Addition: No  
Conversion: No

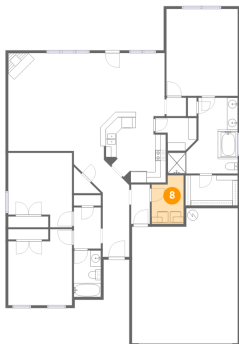
7 Floor 1 - Foyer



Max Dimensions: 6'4" x 19'9"  
Calculated Area: 107 sq. ft  
Included: Yes

Heated: Yes  
Finished: Yes  
Enclosed: Yes  
Contiguous: Yes  
Permitted: Yes  
Wet space: No  
Addition: No  
Conversion: No

8 Floor 1 - Laundry

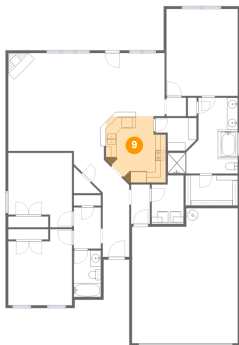


Max Dimensions: 5'11" x 8'9"  
Calculated Area: 49 sq. ft  
Included: Yes

Heated: Yes  
Finished: Yes  
Enclosed: Yes  
Contiguous: Yes  
Permitted: Yes  
Wet space: No  
Addition: No  
Conversion: No

210 Wolf Creek Trail, Huntsville, Madison County, Alabama,  
United States, 35824

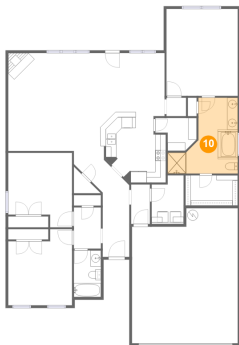
9 Floor 1 - Kitchen



Max Dimensions: 11'3" x 12'5"  
Calculated Area: 121 sq. ft  
Included: Yes

Heated: Yes  
Finished: Yes  
Enclosed: Yes  
Contiguous: Yes  
Permitted: Yes  
Wet space: No  
Addition: No  
Conversion: No

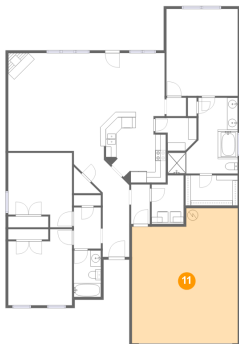
10 Floor 1 - Primary Bath



Max Dimensions: 13'1" x 14'2"  
Calculated Area: 129 sq. ft  
Included: Yes

Heated: Yes  
Finished: Yes  
Enclosed: Yes  
Contiguous: Yes  
Permitted: Yes  
Wet space: Yes  
Addition: No  
Conversion: No

11 Floor 1 - Garage

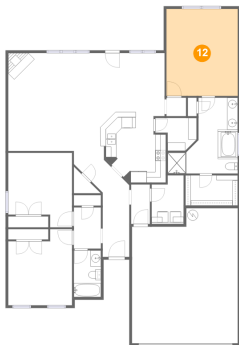


Max Dimensions: 19'9" x 25'2"  
Calculated Area: 463 sq. ft  
Included: No

Heated: No  
Finished: No  
Enclosed: Yes  
Contiguous: Yes  
Permitted: Yes  
Wet space: No  
Addition: No  
Conversion: No

210 Wolf Creek Trail, Huntsville, Madison County, Alabama,  
United States, 35824

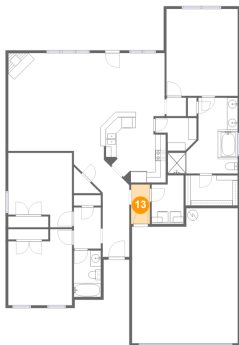
12 Floor 1 - Primary Bedroom



Max Dimensions: 13'4" x 16'3"  
Calculated Area: 216 sq. ft  
Included: Yes

Heated: Yes  
Finished: Yes  
Enclosed: Yes  
Contiguous: Yes  
Permitted: Yes  
Wet space: No  
Addition: No  
Conversion: No

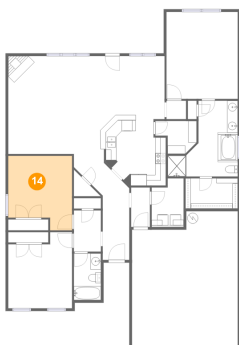
13 Floor 1 - Hall



Max Dimensions: 3'6" x 7'4"  
Calculated Area: 26 sq. ft  
Included: Yes

Heated: Yes  
Finished: Yes  
Enclosed: Yes  
Contiguous: Yes  
Permitted: Yes  
Wet space: No  
Addition: No  
Conversion: No

14 Floor 1 - Bedroom



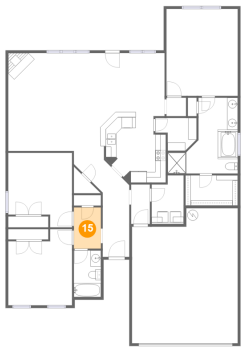
Max Dimensions: 11'11" x 13'11"  
Calculated Area: 147 sq. ft  
Included: Yes

Heated: Yes  
Finished: Yes  
Enclosed: Yes  
Contiguous: Yes  
Permitted: Yes  
Wet space: No  
Addition: No  
Conversion: No



210 Wolf Creek Trail, Huntsville, Madison County, Alabama,  
United States, 35824

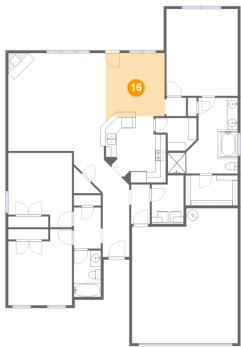
15 Floor 1 - Hall



Max Dimensions: 5'0" x 7'8"  
Calculated Area: 39 sq. ft  
Included: Yes

Heated: Yes  
Finished: Yes  
Enclosed: Yes  
Contiguous: Yes  
Permitted: Yes  
Wet space: No  
Addition: No  
Conversion: No

16 Floor 1 - Dining Area



Max Dimensions: 11'0" x 12'8"  
Calculated Area: 130 sq. ft  
Included: Yes

Heated: Yes  
Finished: Yes  
Enclosed: Yes  
Contiguous: Yes  
Permitted: Yes  
Wet space: No  
Addition: No  
Conversion: No