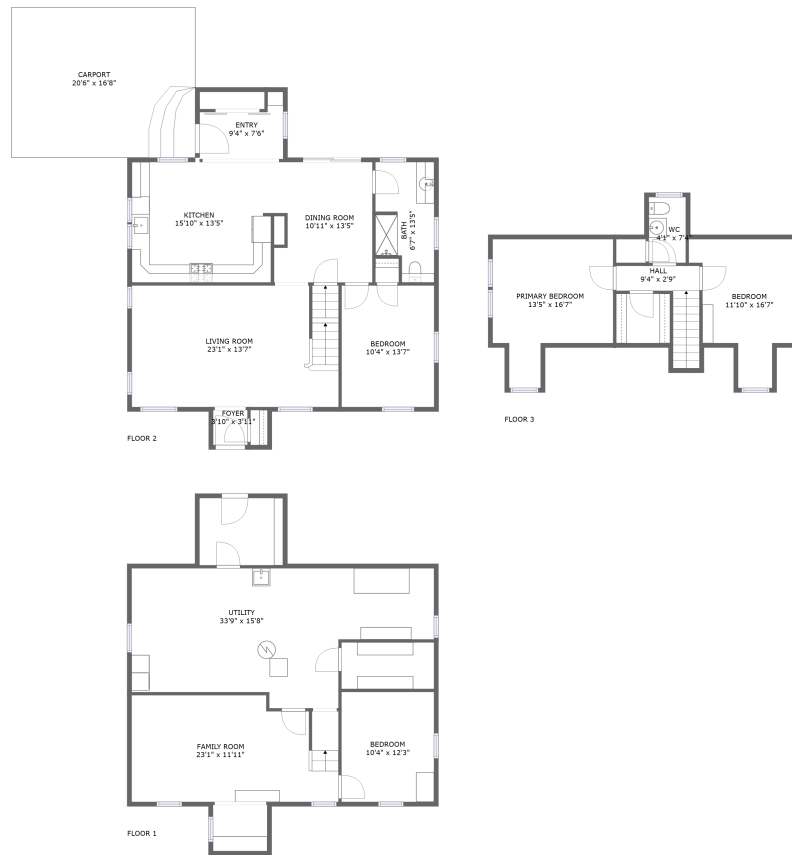


Home Data Report

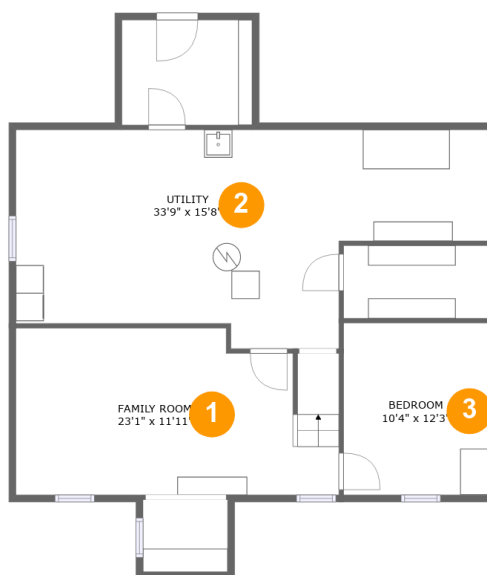
**7985 Buffalo Road, Harborcreek, Erie County,
Pennsylvania, United States, 16421**



Property Summary

0 garages **4** bedrooms **1** bathrooms **1** half baths

3 floors **1,907** Gross Living Area sqft **3,024** total sqft



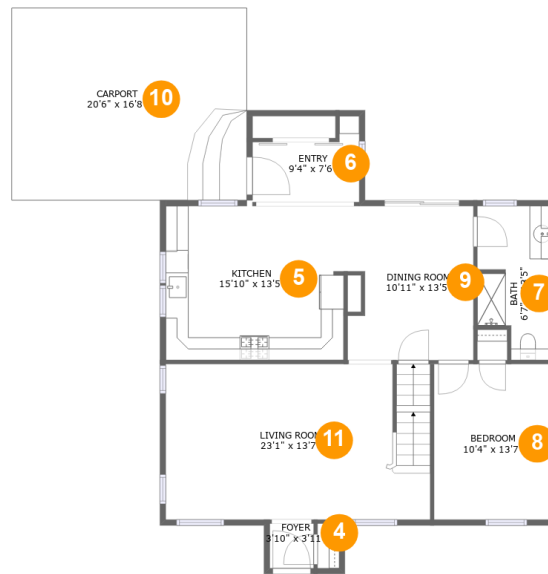
Room Dimensions

Floor 1

Total sqft: 1063

Living area: 290

#	Room name	Dimensions	Area (sqft)	Counted as Living Area
1	Family Room	23'1" x 11'11"	259 sq. ft	Yes
2	Utility	33'9" x 15'8"	418 sq. ft	No
3	Bedroom	10'4" x 12'3"	127 sq. ft	No



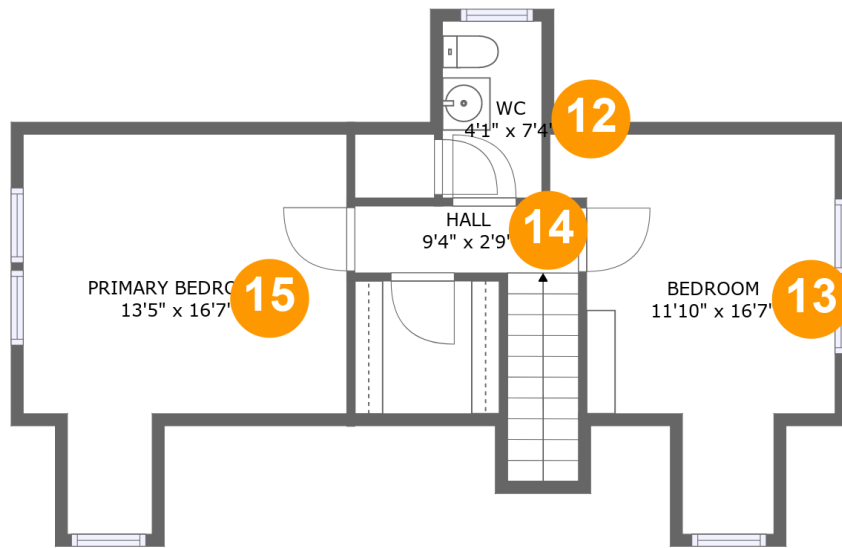
Room Dimensions

Floor 2

Total sqft: 1441

Living area: 1097

#	Room name	Dimensions	Area (sqft)	Counted as Living Area
4	Foyer	3'10" x 3'11"	15 sq. ft	Yes
5	Kitchen	15'10" x 13'5"	211 sq. ft	Yes
6	Entry	9'4" x 7'6"	53 sq. ft	Yes
7	Bath	6'7" x 13'5"	79 sq. ft	Yes
8	Bedroom	10'4" x 13'7"	140 sq. ft	Yes
9	Dining Room	10'11" x 13'5"	142 sq. ft	Yes
10	Carport	20'6" x 16'8"	344 sq. ft	No
11	Living Room	23'1" x 13'7"	311 sq. ft	Yes



Room Dimensions

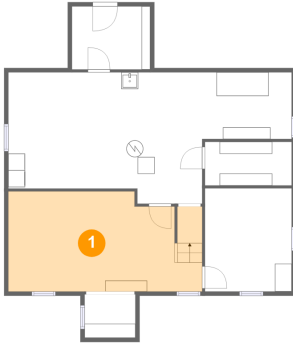
Floor 3

Total sqft: 520

Living area: 520

#	Room name	Dimensions	Area (sqft)	Counted as Living Area
12	Wc	4'1" x 7'4"	30 sq. ft	Yes
13	Bedroom	11'10" x 16'7"	143 sq. ft	Yes
14	Hall	9'4" x 2'9"	51 sq. ft	Yes
15	Primary Bedroom	13'5" x 16'7"	174 sq. ft	Yes

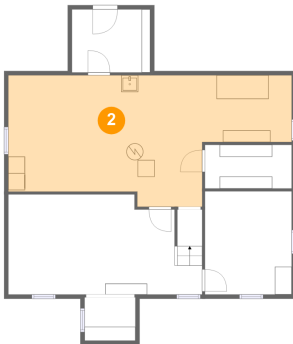
1 Floor 1 - Family Room



Dimensions: 23'1" x 11'11"
Area: 259 sq. ft
Counted as Living Area:
Yes

Heated: Yes
Finished: Yes
Enclosed: Yes
Contiguous:
Yes
Permitted: Yes
Wet Space: No
Addition: No
Conversion: No

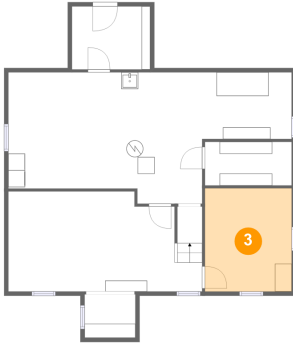
2 Floor 1 - Utility



Dimensions: 33'9" x 15'8"
Area: 418 sq. ft
Counted as Living Area: No

Heated: Yes
Finished: No
Enclosed: Yes
Contiguous: Yes
Permitted: Yes
Wet Space: No
Addition: No
Conversion: No

3 Floor 1 - Bedroom



Dimensions: 10'4" x 12'3"
Area: 127 sq. ft
Counted as Living Area: No

Heated: Yes
Finished: Yes
Enclosed: Yes
Contiguous: Yes
Permitted: Yes
Wet Space: No
Addition: No
Conversion: No

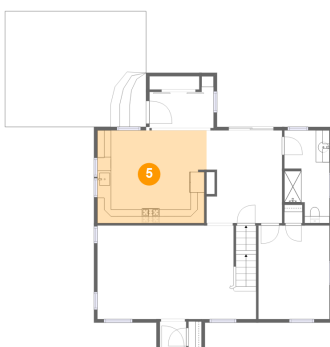
4 Floor 2 - Foyer



Dimensions: 3'10" x 3'11"
Area: 15 sq. ft
Counted as Living Area:
Yes

Heated: Yes
Finished: Yes
Enclosed: Yes
Contiguous:
Yes
Permitted: Yes
Wet Space: No
Addition: No
Conversion: No

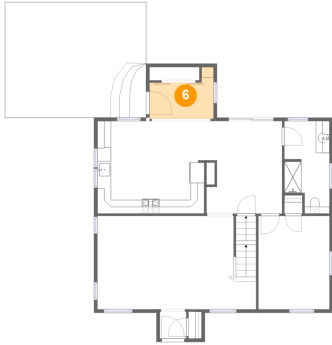
5 Floor 2 - Kitchen



Dimensions: 15'10" x 13'5"
Area: 211 sq. ft
Counted as Living Area:
Yes

Heated: Yes
Finished: Yes
Enclosed: Yes
Contiguous:
Yes
Permitted: Yes
Wet Space: No
Addition: No
Conversion: No

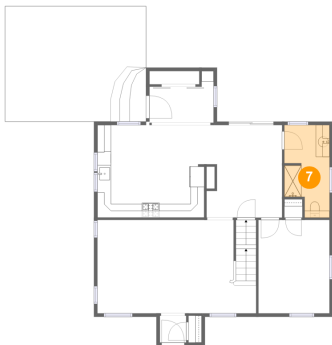
6 Floor 2 - Entry



Dimensions: 9'4" x 7'6"
Area: 53 sq. ft
Counted as Living Area:
Yes

Heated: Yes
Finished: Yes
Enclosed: Yes
Contiguous:
Yes
Permitted: Yes
Wet Space: No
Addition: No
Conversion: No

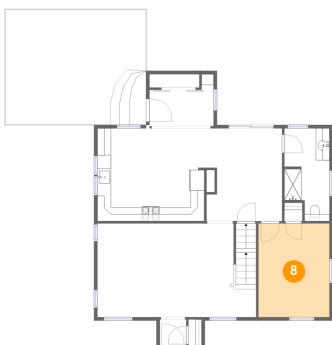
7 Floor 2 - Bath



Dimensions: 6'7" x 13'5"
Area: 79 sq. ft
Counted as Living Area:
Yes

Heated: Yes
Finished: Yes
Enclosed: Yes
Contiguous:
Yes
Permitted: Yes
Wet Space: Yes
Addition: No
Conversion: No

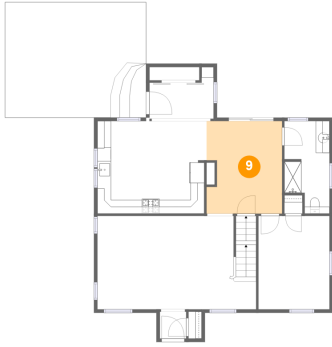
8 Floor 2 - Bedroom



Dimensions: 10'4" x 13'7"
Area: 140 sq. ft
Counted as Living Area:
Yes

Heated: Yes
Finished: Yes
Enclosed: Yes
Contiguous:
Yes
Permitted: Yes
Wet Space: No
Addition: No
Conversion: No

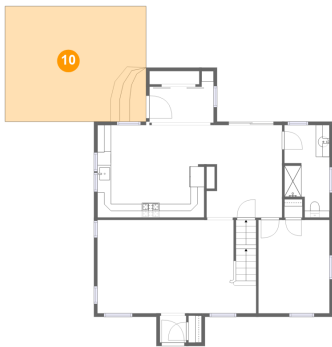
9 Floor 2 - Dining Room



Dimensions: 10'11" x 13'5"
Area: 142 sq. ft
Counted as Living Area:
Yes

Heated: Yes
Finished: Yes
Enclosed: Yes
Contiguous:
Yes
Permitted: Yes
Wet Space: No
Addition: No
Conversion: No

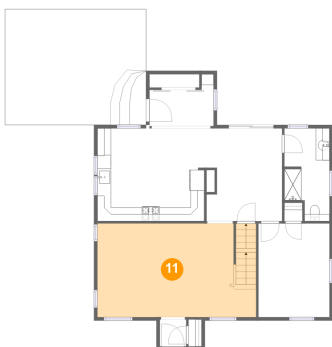
10 Floor 2 - Carport



Dimensions: 20'6" x 16'8"
Area: 344 sq. ft
Counted as Living Area: No

Heated: No
Finished: Yes
Enclosed: No
Contiguous: Yes
Permitted: Yes
Wet Space: No
Addition: No
Conversion: No

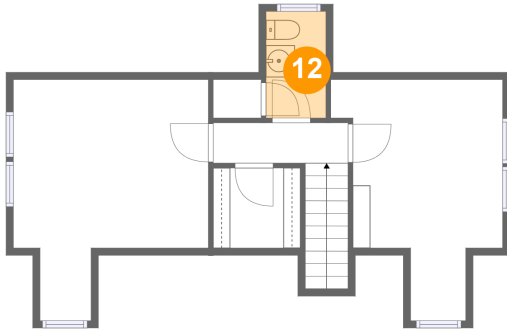
11 Floor 2 - Living Room



Dimensions: 23'1" x 13'7"
Area: 311 sq. ft
Counted as Living Area:
Yes

Heated: Yes
Finished: Yes
Enclosed: Yes
Contiguous:
Yes
Permitted: Yes
Wet Space: No
Addition: No
Conversion: No

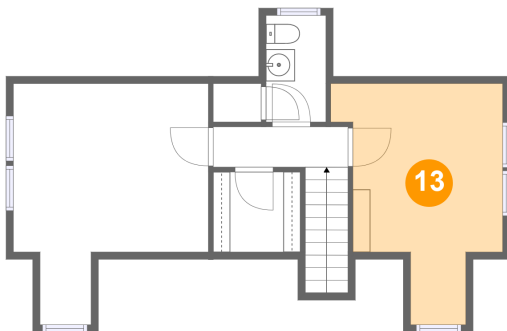
12 Floor 3 - Wc



Dimensions: 4'1" x 7'4"
Area: 30 sq. ft
Counted as Living Area:
Yes

Heated: Yes
Finished: Yes
Enclosed: Yes
Contiguous:
Yes
Permitted: Yes
Wet Space: Yes
Addition: No
Conversion: No

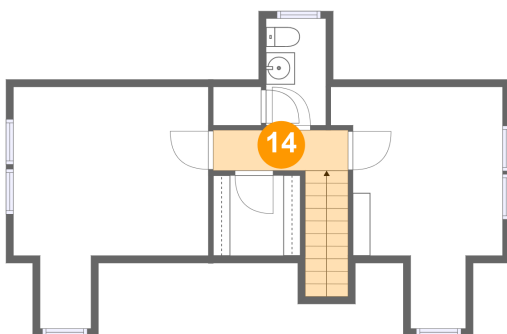
13 Floor 3 - Bedroom



Dimensions: 11'10" x 16'7"
Area: 143 sq. ft
Counted as Living Area:
Yes

Heated: Yes
Finished: Yes
Enclosed: Yes
Contiguous:
Yes
Permitted: Yes
Wet Space: No
Addition: No
Conversion: No

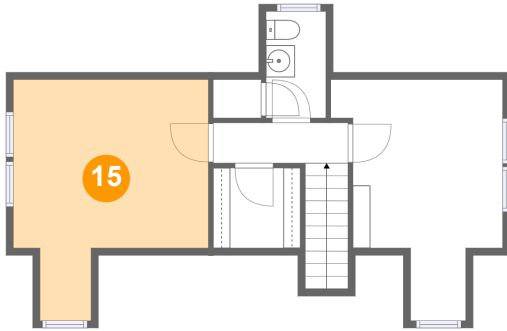
14 Floor 3 - Hall



Dimensions: 9'4" x 2'9"
Area: 51 sq. ft
Counted as Living Area:
Yes

Heated: Yes
Finished: Yes
Enclosed: Yes
Contiguous:
Yes
Permitted: Yes
Wet Space: No
Addition: No
Conversion: No

15 Floor 3 - Primary Bedroom



Dimensions: 13'5" x 16'7"
Area: 174 sq. ft
Counted as Living Area:
Yes

Heated: Yes
Finished: Yes
Enclosed: Yes
Contiguous:
Yes
Permitted: Yes
Wet Space: No
Addition: No
Conversion: No