

Home report

11288 Race St,Boise,ID,US



Total Area: 1595 sq. ft
Floor 1: 707 sq. ft, Floor 2: 888 sq. ft
Excluded: Storage 69 sq. ft, Undefined 12 sq. ft, Garage 411 sq. ft, Covered patio 76 sq. ft, Walls: 172 sq. ft

Property summary

 **2** Floors

 **3** Bedrooms

 **2** Bathrooms

Home report

11288 Race St,Boise,ID,US



1
Half baths



1
Garages

Home report

11288 Race St,Boise,ID,US



Room dimensions

Floor 1 Total:707sqft Excluded: 568sqft

#		Max Dimensions	sqft	Included
1	Covered Patio	6'4" x 12'0"	76 sq. ft	No
2	Pantry	5'4" x 3'11"	19 sq. ft	Yes
3	Kitchen	13'11" x 12'7"	148 sq. ft	Yes
4	Foyer	6'2" x 9'9"	59 sq. ft	Yes
5	Storage	9'0" x 7'6"	66 sq. ft	No
6	Walking Path	4'8" x 25'7"	121 sq. ft	No
7	Garage	21'4" x 19'3"	411 sq. ft	No
8	Living Room	14'1" x 14'8"	207 sq. ft	Yes
9	Dining Area	14'11" x 17'4"	209 sq. ft	Yes
10	WC	5'0" x 5'8"	28 sq. ft	Yes

Home report

11288 Race St,Boise,ID,US



Room dimensions

Floor 2 Total:888sqft Excluded: 0sqft

#		Max Dimensions	sqft	Included
11	Bath	6'3" x 10'3"	57 sq. ft	Yes
12	Primary Bedroom	13'0" x 14'9"	192 sq. ft	Yes
13	Bath	7'0" x 5'11"	42 sq. ft	Yes
14	Hall	5'4" x 17'8"	147 sq. ft	Yes
15	Bath	7'0" x 5'7"	39 sq. ft	Yes
16	W.I.C.	7'0" x 7'3"	46 sq. ft	Yes
17	Bedroom	10'3" x 10'5"	108 sq. ft	Yes
18	Laundry	9'0" x 6'1"	46 sq. ft	Yes
19	Bedroom	9'9" x 14'8"	128 sq. ft	Yes

1 Floor 1 - Covered Patio



Max Dimensions: 6'4" x 12'0"
Calculated Area: 76 sq. ft
Included: No

Heated: No
Finished: Yes
Enclosed: No
Contiguous: Yes
Permitted: Yes
Wet space: No
Addition: No
Conversion: No

2 Floor 1 - Pantry



Max Dimensions: 5'4" x 3'11"
Calculated Area: 19 sq. ft
Included: Yes

Heated: Yes
Finished: Yes
Enclosed: Yes
Contiguous: Yes
Permitted: Yes
Wet space: No
Addition: No
Conversion: No

3 Floor 1 - Kitchen



Max Dimensions: 13'11" x 12'7"
Calculated Area: 148 sq. ft
Included: Yes

Heated: Yes
Finished: Yes
Enclosed: Yes
Contiguous: Yes
Permitted: Yes
Wet space: No
Addition: No
Conversion: No

4 Floor 1 - Foyer



Max Dimensions: 6'2" x 9'9"
Calculated Area: 59 sq. ft
Included: Yes

Heated: Yes
Finished: Yes
Enclosed: Yes
Contiguous: Yes
Permitted: Yes
Wet space: No
Addition: No
Conversion: No

5 Floor 1 - Storage



Max Dimensions: 9'0" x 7'6"
Calculated Area: 66 sq. ft
Included: No

Heated: No
Finished: Yes
Enclosed: No
Contiguous: Yes
Permitted: Yes
Wet space: No
Addition: No
Conversion: No

6 Floor 1 - Walking Path



Max Dimensions: 4'8" x 25'7"
Calculated Area: 121 sq. ft
Included: No

Heated: No
Finished: No
Enclosed: No
Contiguous: Yes
Permitted: No
Wet space: No
Addition: No
Conversion: No

7 Floor 1 - Garage



Max Dimensions: 21'4" x 19'3"
Calculated Area: 411 sq. ft
Included: No

Heated: No
Finished: No
Enclosed: Yes
Contiguous: Yes
Permitted: Yes
Wet space: No
Addition: No
Conversion: No

8 Floor 1 - Living Room



Max Dimensions: 14'1" x 14'8"
Calculated Area: 207 sq. ft
Included: Yes

Heated: Yes
Finished: Yes
Enclosed: Yes
Contiguous: Yes
Permitted: Yes
Wet space: No
Addition: No
Conversion: No

9 Floor 1 - Dining Area



Max Dimensions: 14'11" x 17'4"
Calculated Area: 209 sq. ft
Included: Yes

Heated: Yes
Finished: Yes
Enclosed: Yes
Contiguous: Yes
Permitted: Yes
Wet space: No
Addition: No
Conversion: No

10 Floor 1 - WC



Max Dimensions: 5'0" x 5'8"
Calculated Area: 28 sq. ft
Included: Yes

Heated: Yes
Finished: Yes
Enclosed: Yes
Contiguous: Yes
Permitted: Yes
Wet space: Yes
Addition: No
Conversion: No

11 Floor 2 - Bath



Max Dimensions: 6'3" x 10'3"
Calculated Area: 57 sq. ft
Included: Yes

Heated: Yes
Finished: Yes
Enclosed: Yes
Contiguous: Yes
Permitted: Yes
Wet space: Yes
Addition: No
Conversion: No

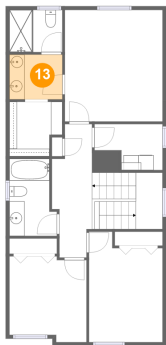
12 Floor 2 - Primary Bedroom



Max Dimensions: 13'0" x 14'9"
Calculated Area: 192 sq. ft
Included: Yes

Heated: Yes
Finished: Yes
Enclosed: Yes
Contiguous: Yes
Permitted: Yes
Wet space: No
Addition: No
Conversion: No

13 Floor 2 - Bath



Max Dimensions: 7'0" x 5'11"
Calculated Area: 42 sq. ft
Included: Yes

Heated: Yes
Finished: Yes
Enclosed: Yes
Contiguous: Yes
Permitted: Yes
Wet space: Yes
Addition: No
Conversion: No

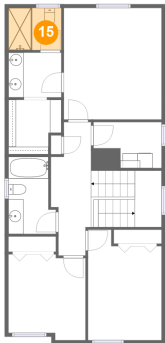
14 Floor 2 - Hall



Max Dimensions: 5'4" x 17'8"
Calculated Area: 147 sq. ft
Included: Yes

Heated: Yes
Finished: Yes
Enclosed: Yes
Contiguous: Yes
Permitted: Yes
Wet space: No
Addition: No
Conversion: No

15 Floor 2 - Bath



Max Dimensions: 7'0" x 5'7"
Calculated Area: 39 sq. ft
Included: Yes

Heated: Yes
Finished: Yes
Enclosed: Yes
Contiguous: Yes
Permitted: Yes
Wet space: Yes
Addition: No
Conversion: No

16 Floor 2 - W.I.C.



Max Dimensions: 7'0" x 7'3"
Calculated Area: 46 sq. ft
Included: Yes

Heated: Yes
Finished: Yes
Enclosed: Yes
Contiguous: Yes
Permitted: Yes
Wet space: No
Addition: No
Conversion: No

17 Floor 2 - Bedroom



Max Dimensions: 10'3" x 10'5"
Calculated Area: 108 sq. ft
Included: Yes

Heated: Yes
Finished: Yes
Enclosed: Yes
Contiguous: Yes
Permitted: Yes
Wet space: No
Addition: No
Conversion: No

18 Floor 2 - Laundry



Max Dimensions: 9'0" x 6'1"
Calculated Area: 46 sq. ft
Included: Yes

Heated: Yes
Finished: Yes
Enclosed: Yes
Contiguous: Yes
Permitted: Yes
Wet space: No
Addition: No
Conversion: No

19 Floor 2 - Bedroom



Max Dimensions: 9'9" x 14'8"
Calculated Area: 128 sq. ft
Included: Yes

Heated: Yes
Finished: Yes
Enclosed: Yes
Contiguous: Yes
Permitted: Yes
Wet space: No
Addition: No
Conversion: No