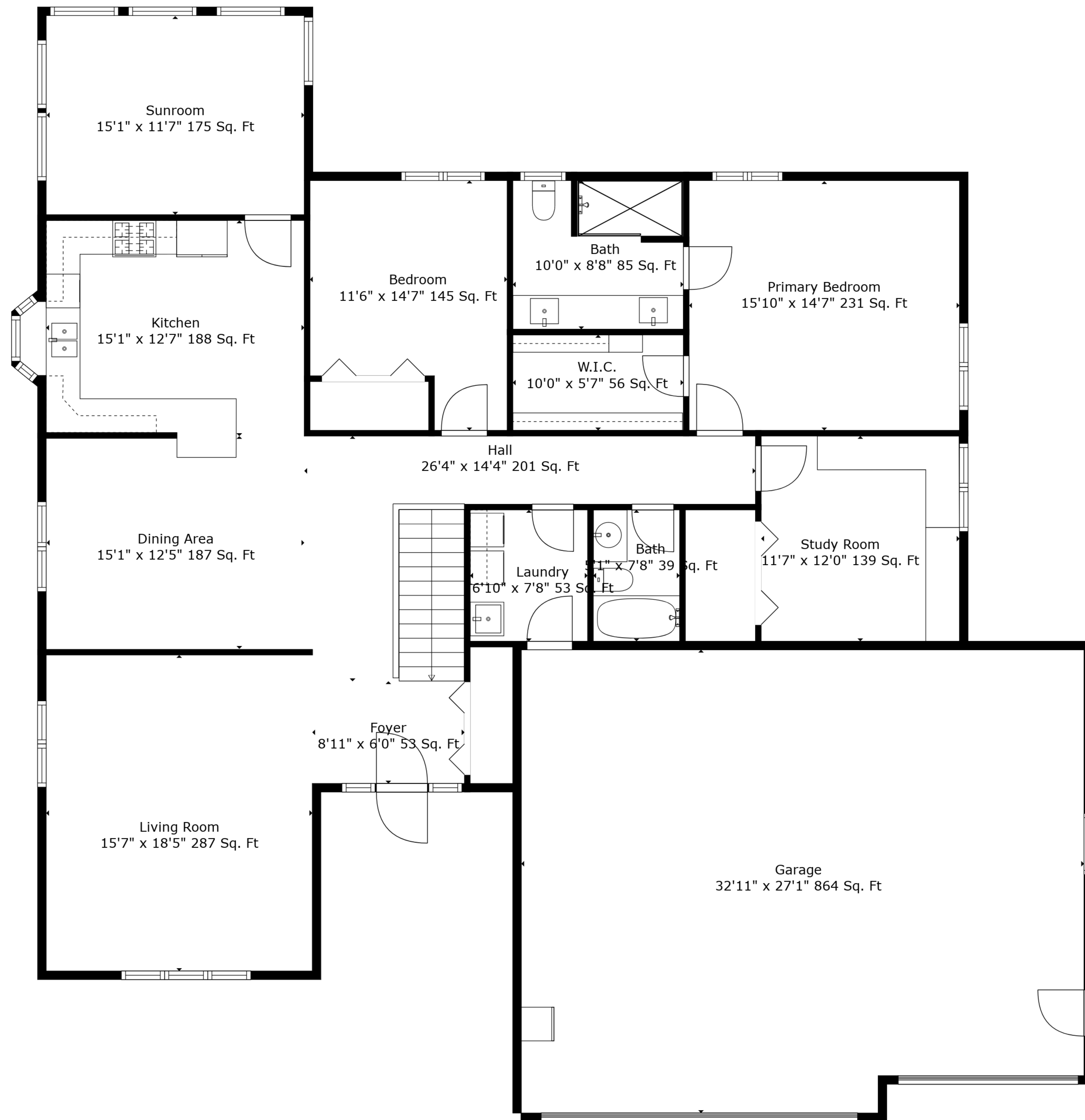


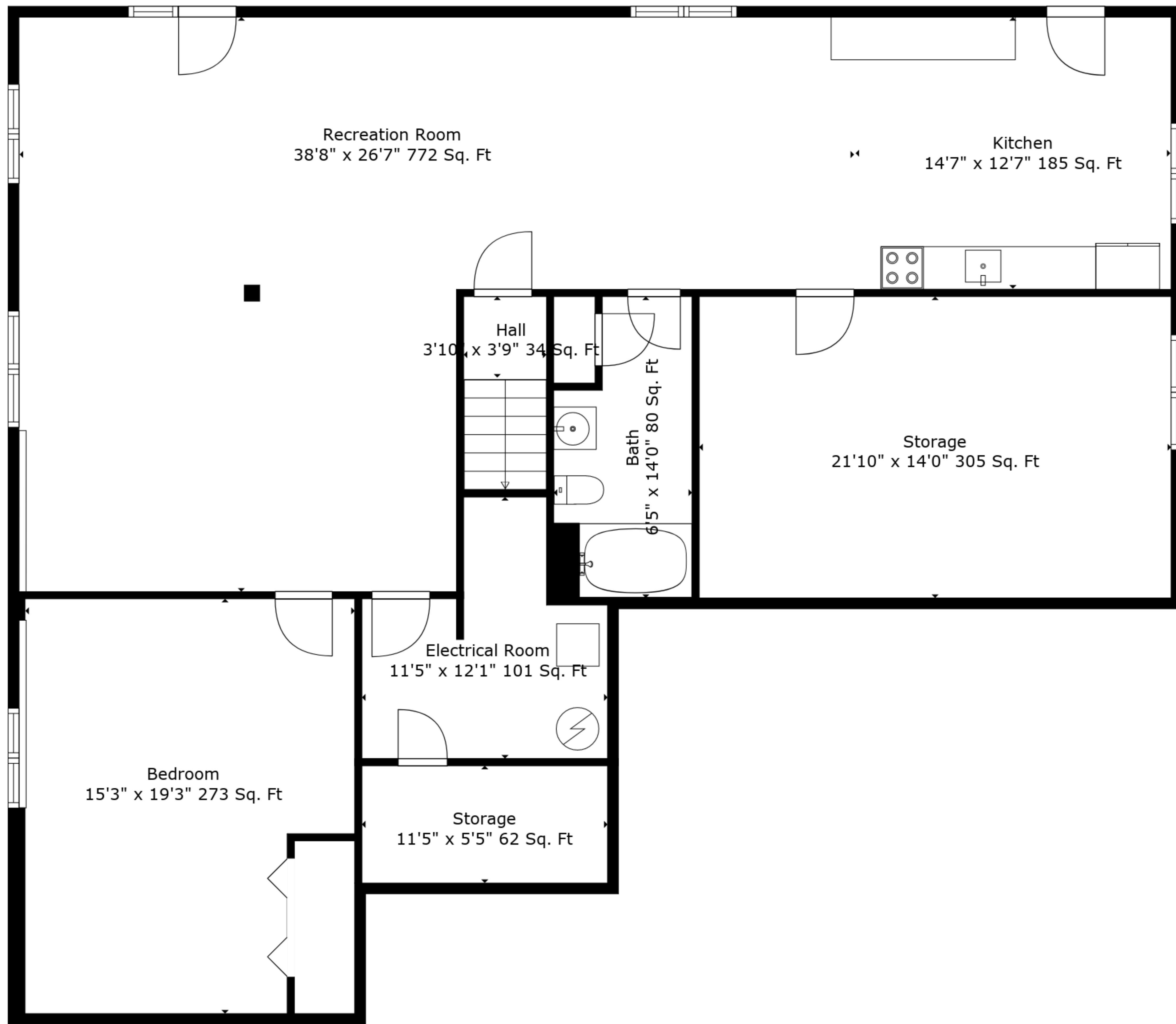
TOTAL: 3399 sq. ft  
 BELOW GROUND: 1419 sq. ft, FLOOR 2: 1980 sq. ft  
 EXCLUDED AREAS: STORAGE: 371 sq. ft, ELECTRICAL ROOM: 101 sq. ft, GARAGE: 864 sq. ft,  
 BAY WINDOW: 7 sq. ft

Measurements Are Deemed Highly Reliable But Not Guaranteed.

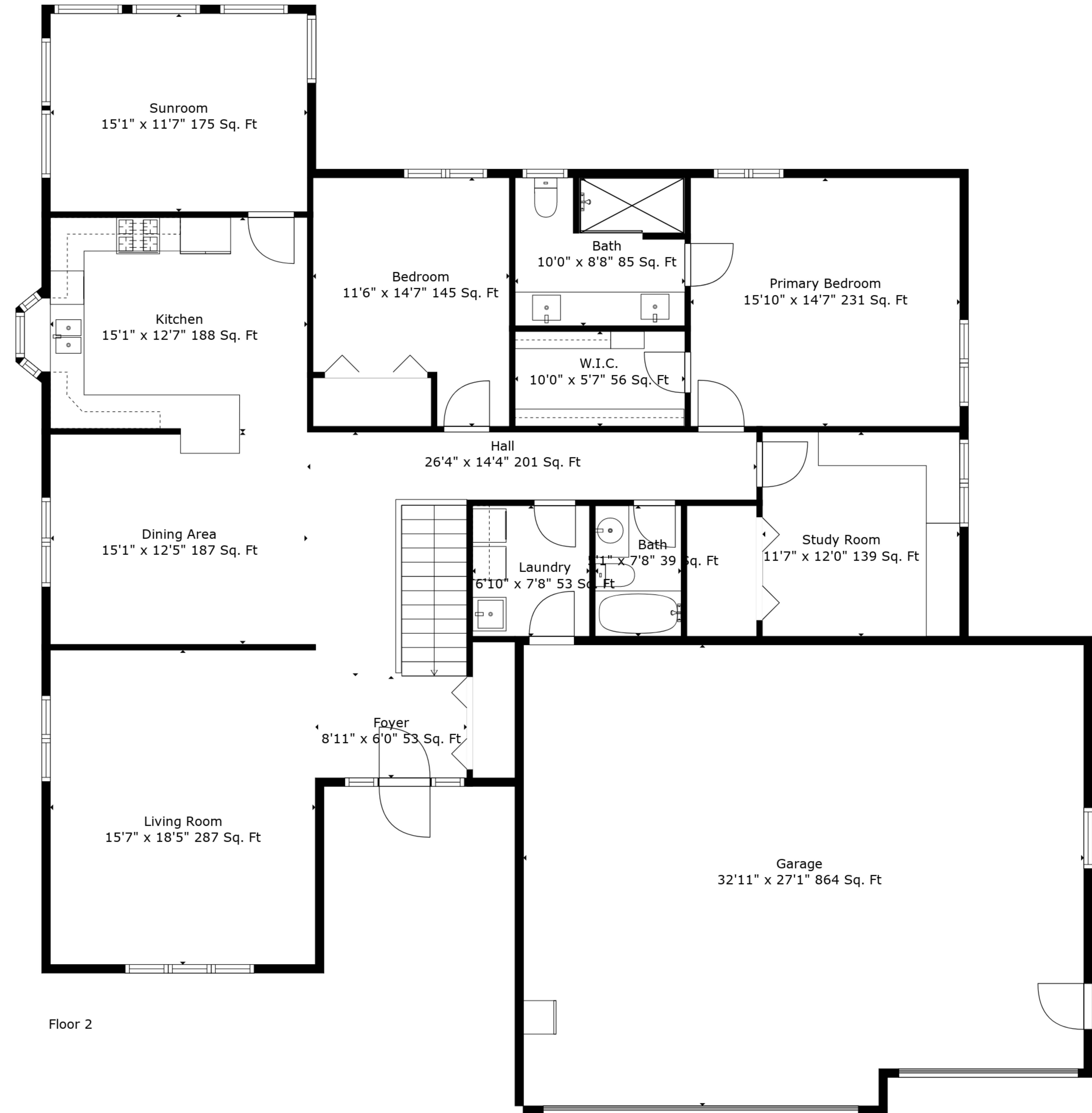


TOTAL: 3399 sq. ft  
 BELOW GROUND: 1419 sq. ft, FLOOR 2: 1980 sq. ft  
 EXCLUDED AREAS: STORAGE: 371 sq. ft, ELECTRICAL ROOM: 101 sq. ft, GARAGE: 864 sq. ft,  
 BAY WINDOW: 7 sq. ft

Measurements Are Deemed Highly Reliable But Not Guaranteed.



Floor 1



Floor 2

TOTAL: 3399 sq. ft  
 BELOW GROUND: 1419 sq. ft, FLOOR 2: 1980 sq. ft  
 EXCLUDED AREAS: STORAGE: 371 sq. ft, ELECTRICAL ROOM: 101 sq. ft, GARAGE: 864 sq. ft,  
 BAY WINDOW: 7 sq. ft

Measurements Are Deemed Highly Reliable But Not Guaranteed.