

# 1423 Delaware Avenue, Bartlesville, Washington County, Oklahoma, United States, 74003



**Total Area: 4811 sq. ft**

Basement: 47 sq. ft, 1st Floor: 1876 sq. ft, 2nd Floor: 2227 sq. ft, 3rd Floor: 661 sq. ft  
Excluded: Storage 116 sq. ft, Utility 249 sq. ft, Basement 190 sq. ft, Garage 369 sq. ft, Fireplace 13 sq. ft, Walls: 387 sq. ft


## Property summary



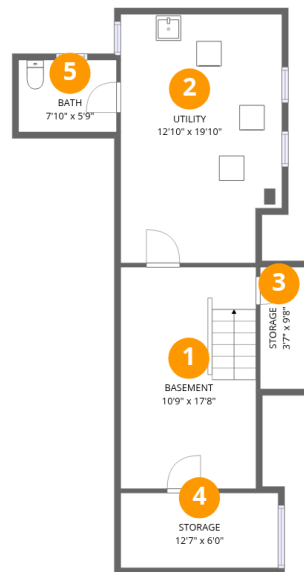
Home data report

**1423 Delaware Avenue, Bartlesville, Washington  
County, Oklahoma, United States, 74003**



 **2**  
Half baths

 **1**  
Garages



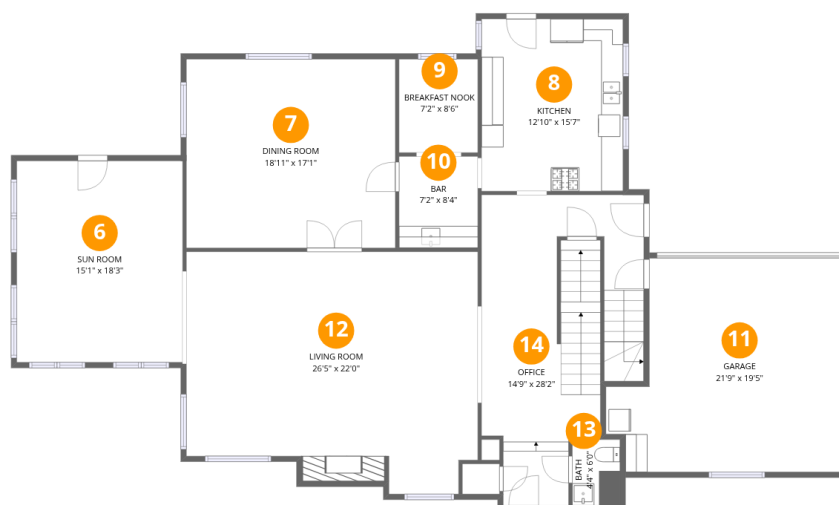
## Room dimensions

Floor 1 Below grade

Total:47sqft

Excluded: 555sqft

#		Dimensions	sqft	Counted as living area
1	Basement	10'9" x 17'8"	190 sq. ft	No
2	Utility	12'10" x 19'10"	255 sq. ft	No
3	Storage	3'7" x 9'8"	35 sq. ft	No
4	Storage	12'7" x 6'0"	75 sq. ft	No
5	Bath	7'10" x 5'9"	45 sq. ft	Yes

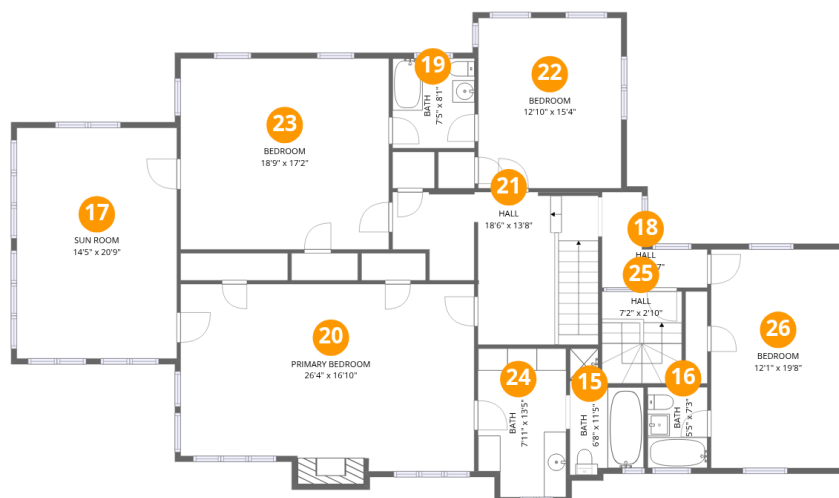


## Room dimensions

Floor 2

Total:1876sqft Excluded: 369sqft

#		Dimensions	sqft	Counted as living area
6	Sun Room	15'1" x 18'3"	275 sq. ft	Yes
7	Dining Room	18'11" x 17'1"	325 sq. ft	Yes
8	Kitchen	12'10" x 15'7"	201 sq. ft	Yes
9	Breakfast Nook	7'2" x 8'6"	61 sq. ft	Yes
10	Bar	7'2" x 8'4"	59 sq. ft	Yes
11	Garage	21'9" x 19'5"	421 sq. ft	No
12	Living Room	26'5" x 22'0"	581 sq. ft	Yes
13	Bath	4'4" x 6'0"	26 sq. ft	Yes
14	Office	14'9" x 28'2"	414 sq. ft	Yes



## Room dimensions

Floor 3

Total:2227sqft Excluded: 13sqft

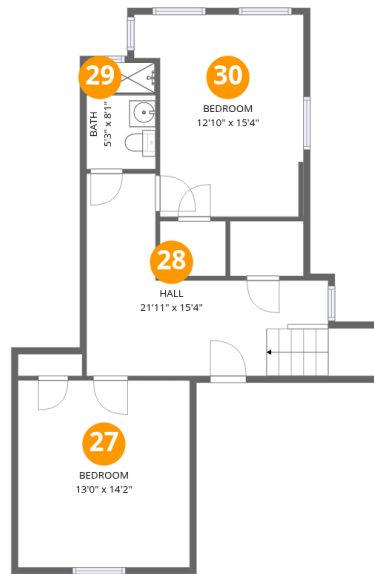
#		Dimensions	sqft	Counted as living area
15	Bath	6'8" x 11'5"	76 sq. ft	Yes
16	Bath	5'5" x 7'3"	39 sq. ft	Yes
17	Sun Room	14'5" x 20'9"	299 sq. ft	Yes
18	Hall	9'6" x 8'7"	81 sq. ft	Yes
19	Bath	7'5" x 8'1"	59 sq. ft	Yes
20	Primary Bedroom	26'4" x 16'10"	443 sq. ft	Yes
21	Hall	18'6" x 13'8"	253 sq. ft	Yes
22	Bedroom	12'10" x 15'4"	197 sq. ft	Yes
23	Bedroom	18'9" x 17'2"	321 sq. ft	Yes
24	Bath	7'11" x 13'5"	106 sq. ft	Yes
25	Hall	7'2" x 2'10"	20 sq. ft	Yes

Home data report

**1423 Delaware Avenue, Bartlesville, Washington  
County, Oklahoma, United States, 74003**



#		Dimensions	sqft	Counted as living area
26	Bedroom	12'1" x 19'8"	237 sq. ft	Yes



## Room dimensions

Floor 4

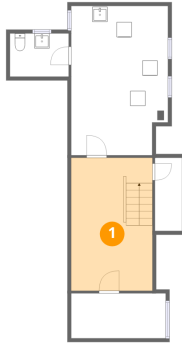
Total:661sqft

Excluded: 0sqft

#		Dimensions	sqft	Counted as living area
27	Bedroom	13'0" x 14'2"	185 sq. ft	Yes
28	Hall	21'11" x 15'4"	336 sq. ft	Yes
29	Bath	5'3" x 8'1"	42 sq. ft	Yes
30	Bedroom	12'10" x 15'4"	196 sq. ft	Yes



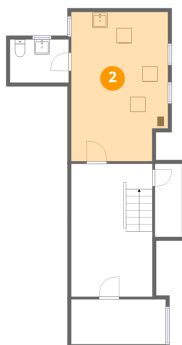
## 1 Floor 1 - Basement



Dimensions: 10'9" x 17'8"  
Area: 190 sq. ft  
Counted as living area: No

Heated: Yes  
Finished: No  
Enclosed: Yes  
Contiguous: Yes  
Permitted: Yes  
Wet space: No  
Addition: No  
Conversion: No

## 2 Floor 1 - Utility

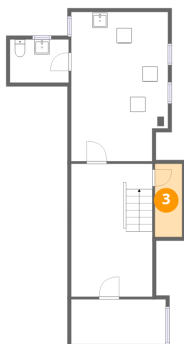


Dimensions: 12'10" x 19'10"  
Area: 255 sq. ft  
Counted as living area: No

Heated: Yes  
Finished: No  
Enclosed: Yes  
Contiguous: Yes  
Permitted: Yes  
Wet space: No  
Addition: No  
Conversion: No



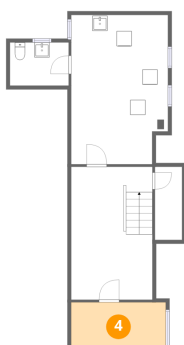
### 3 Floor 1 - Storage



Dimensions: 3'7" x 9'8"  
Area: 35 sq. ft  
Counted as living area: No

Heated: No  
Finished: No  
Enclosed: No  
Contiguous: Yes  
Permitted: Yes  
Wet space: No  
Addition: No  
Conversion: No

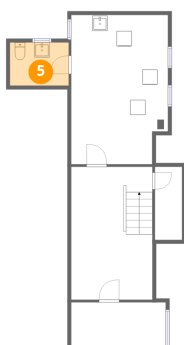
### 4 Floor 1 - Storage



Dimensions: 12'7" x 6'0"  
Area: 75 sq. ft  
Counted as living area: No

Heated: No  
Finished: No  
Enclosed: No  
Contiguous: Yes  
Permitted: Yes  
Wet space: No  
Addition: No  
Conversion: No

### 5 Floor 1 - Bath



Dimensions: 7'10" x 5'9"  
Area: 45 sq. ft  
Counted as living area: No

Heated: Yes  
Finished: Yes  
Enclosed: Yes  
Contiguous: No  
Permitted: Yes  
Wet space: Yes  
Addition: No  
Conversion: No



## 6 Floor 2 - Sun Room



Dimensions: 15'1" x 18'3"  
Area: 275 sq. ft  
Counted as living area: Yes

Heated: Yes  
Finished: Yes  
Enclosed: Yes  
Contiguous: Yes  
Permitted: Yes  
Wet space: No  
Addition: No  
Conversion: No

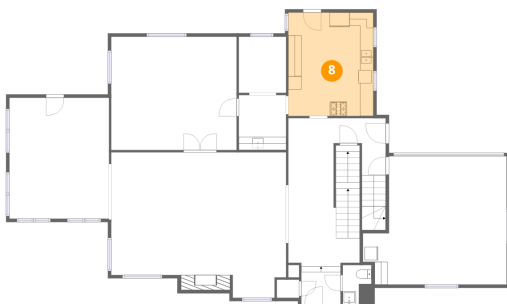
## 7 Floor 2 - Dining Room



Dimensions: 18'11" x 17'1"  
Area: 325 sq. ft  
Counted as living area: Yes

Heated: Yes  
Finished: Yes  
Enclosed: Yes  
Contiguous: Yes  
Permitted: Yes  
Wet space: No  
Addition: No  
Conversion: No

## 8 Floor 2 - Kitchen



Dimensions: 12'10" x 15'7"  
Area: 201 sq. ft  
Counted as living area: Yes

Heated: Yes  
Finished: Yes  
Enclosed: Yes  
Contiguous: Yes  
Permitted: Yes  
Wet space: No  
Addition: No  
Conversion: No



## 9 Floor 2 - Breakfast Nook



Dimensions: 7'2" x 8'6"  
Area: 61 sq. ft  
Counted as living area: Yes

Heated: Yes  
Finished: Yes  
Enclosed: Yes  
Contiguous: Yes  
Permitted: Yes  
Wet space: No  
Addition: No  
Conversion: No

## 10 Floor 2 - Bar



Dimensions: 7'2" x 8'4"  
Area: 59 sq. ft  
Counted as living area: Yes

Heated: Yes  
Finished: Yes  
Enclosed: Yes  
Contiguous: Yes  
Permitted: Yes  
Wet space: No  
Addition: No  
Conversion: No

## 11 Floor 2 - Garage

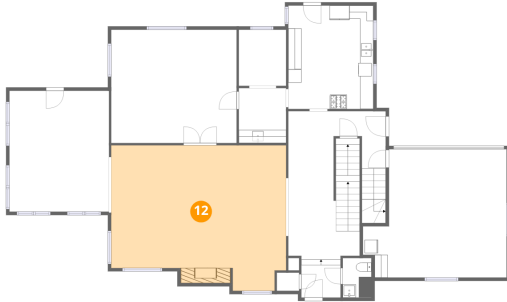


Dimensions: 21'9" x 19'5"  
Area: 421 sq. ft  
Counted as living area: No

Heated: No  
Finished: No  
Enclosed: Yes  
Contiguous: Yes  
Permitted: Yes  
Wet space: No  
Addition: No  
Conversion: No



## 12 Floor 2 - Living Room



Dimensions: 26'5" x 22'0"  
Area: 581 sq. ft  
Counted as living area: Yes

Heated: Yes  
Finished: Yes  
Enclosed: Yes  
Contiguous: Yes  
Permitted: Yes  
Wet space: No  
Addition: No  
Conversion: No

## 13 Floor 2 - Bath



Dimensions: 4'4" x 6'0"  
Area: 26 sq. ft  
Counted as living area: Yes

Heated: Yes  
Finished: Yes  
Enclosed: Yes  
Contiguous: Yes  
Permitted: Yes  
Wet space: Yes  
Addition: No  
Conversion: No

## 14 Floor 2 - Office

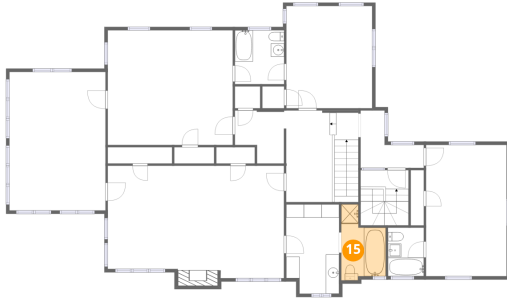


Dimensions: 14'9" x 28'2"  
Area: 414 sq. ft  
Counted as living area: Yes

Heated: Yes  
Finished: Yes  
Enclosed: Yes  
Contiguous: Yes  
Permitted: Yes  
Wet space: No  
Addition: No  
Conversion: No



**15** Floor 3 - Bath



Dimensions: 6'8" x 11'5"  
Area: 76 sq. ft  
Counted as living area: Yes

Heated: Yes  
Finished: Yes  
Enclosed: Yes  
Contiguous: Yes  
Permitted: Yes  
Wet space: Yes  
Addition: No  
Conversion: No

**16** Floor 3 - Bath



Dimensions: 5'5" x 7'3"  
Area: 39 sq. ft  
Counted as living area: Yes

Heated: Yes  
Finished: Yes  
Enclosed: Yes  
Contiguous: Yes  
Permitted: Yes  
Wet space: Yes  
Addition: No  
Conversion: No

**17** Floor 3 - Sun Room

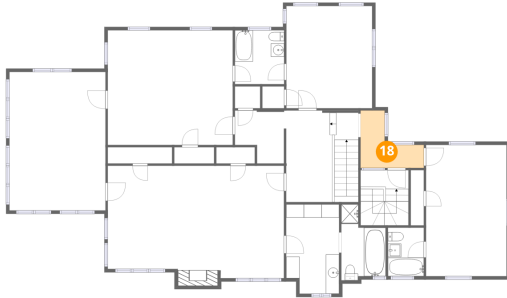


Dimensions: 14'5" x 20'9"  
Area: 299 sq. ft  
Counted as living area: Yes

Heated: Yes  
Finished: Yes  
Enclosed: Yes  
Contiguous: Yes  
Permitted: Yes  
Wet space: No  
Addition: No  
Conversion: No



### 18 Floor 3 - Hall



Dimensions: 9'6" x 8'7"  
Area: 81 sq. ft  
Counted as living area: Yes

Heated: Yes  
Finished: Yes  
Enclosed: Yes  
Contiguous: Yes  
Permitted: Yes  
Wet space: No  
Addition: No  
Conversion: No

### 19 Floor 3 - Bath



Dimensions: 7'5" x 8'1"  
Area: 59 sq. ft  
Counted as living area: Yes

Heated: Yes  
Finished: Yes  
Enclosed: Yes  
Contiguous: Yes  
Permitted: Yes  
Wet space: Yes  
Addition: No  
Conversion: No

### 20 Floor 3 - Primary Bedroom

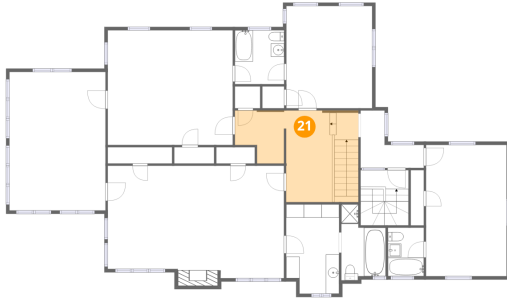


Dimensions: 26'4" x 16'10"  
Area: 443 sq. ft  
Counted as living area: Yes

Heated: Yes  
Finished: Yes  
Enclosed: Yes  
Contiguous: Yes  
Permitted: Yes  
Wet space: No  
Addition: No  
Conversion: No



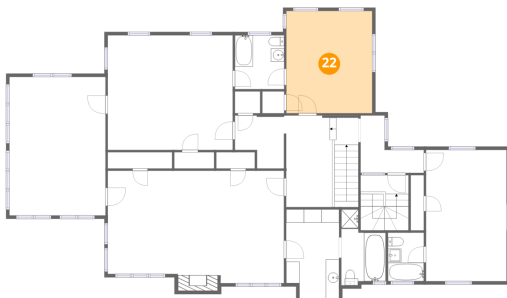
### 21 Floor 3 - Hall



Dimensions: 18'6" x 13'8"  
Area: 253 sq. ft  
Counted as living area: Yes

Heated: Yes  
Finished: Yes  
Enclosed: Yes  
Contiguous: Yes  
Permitted: Yes  
Wet space: No  
Addition: No  
Conversion: No

### 22 Floor 3 - Bedroom



Dimensions: 12'10" x 15'4"  
Area: 197 sq. ft  
Counted as living area: Yes

Heated: Yes  
Finished: Yes  
Enclosed: Yes  
Contiguous: Yes  
Permitted: Yes  
Wet space: No  
Addition: No  
Conversion: No

### 23 Floor 3 - Bedroom



Dimensions: 18'9" x 17'2"  
Area: 321 sq. ft  
Counted as living area: Yes

Heated: Yes  
Finished: Yes  
Enclosed: Yes  
Contiguous: Yes  
Permitted: Yes  
Wet space: No  
Addition: No  
Conversion: No



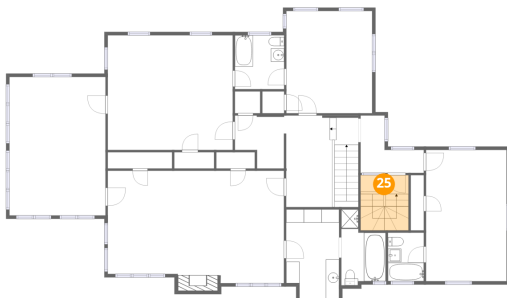
**24** Floor 3 - Bath



Dimensions: 7'11" x 13'5"  
Area: 106 sq. ft  
Counted as living area: Yes

Heated: Yes  
Finished: Yes  
Enclosed: Yes  
Contiguous: Yes  
Permitted: Yes  
Wet space: Yes  
Addition: No  
Conversion: No

**25** Floor 3 - Hall



Dimensions: 7'2" x 2'10"  
Area: 20 sq. ft  
Counted as living area: Yes

Heated: Yes  
Finished: Yes  
Enclosed: Yes  
Contiguous: Yes  
Permitted: Yes  
Wet space: No  
Addition: No  
Conversion: No

**26** Floor 3 - Bedroom

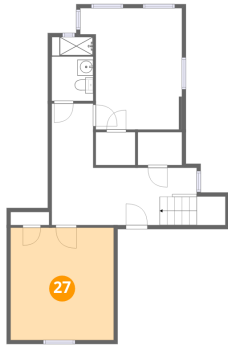


Dimensions: 12'1" x 19'8"  
Area: 237 sq. ft  
Counted as living area: Yes

Heated: Yes  
Finished: Yes  
Enclosed: Yes  
Contiguous: Yes  
Permitted: Yes  
Wet space: No  
Addition: No  
Conversion: No



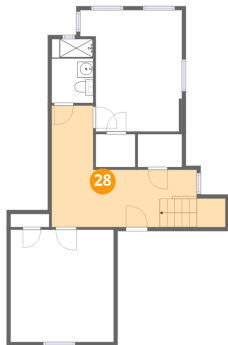
### 27 Floor 4 - Bedroom



Dimensions: 13'0" x 14'2"  
Area: 185 sq. ft  
Counted as living area: Yes

Heated: Yes  
Finished: Yes  
Enclosed: Yes  
Contiguous: Yes  
Permitted: Yes  
Wet space: No  
Addition: No  
Conversion: No

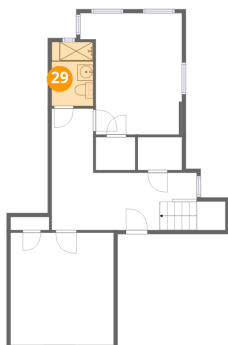
### 28 Floor 4 - Hall



Dimensions: 21'11" x 15'4"  
Area: 336 sq. ft  
Counted as living area: Yes

Heated: Yes  
Finished: Yes  
Enclosed: Yes  
Contiguous: Yes  
Permitted: Yes  
Wet space: No  
Addition: No  
Conversion: No

### 29 Floor 4 - Bath

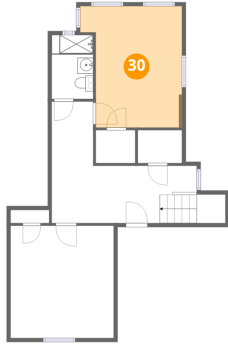


Dimensions: 5'3" x 8'1"  
Area: 42 sq. ft  
Counted as living area: Yes

Heated: Yes  
Finished: Yes  
Enclosed: Yes  
Contiguous: Yes  
Permitted: Yes  
Wet space: Yes  
Addition: No  
Conversion: No



**30** Floor 4 - Bedroom



Dimensions: 12'10" x 15'4"  
Area: 196 sq. ft  
Counted as living area: Yes

Heated: Yes  
Finished: Yes  
Enclosed: Yes  
Contiguous: Yes  
Permitted: Yes  
Wet space: No  
Addition: No  
Conversion: No