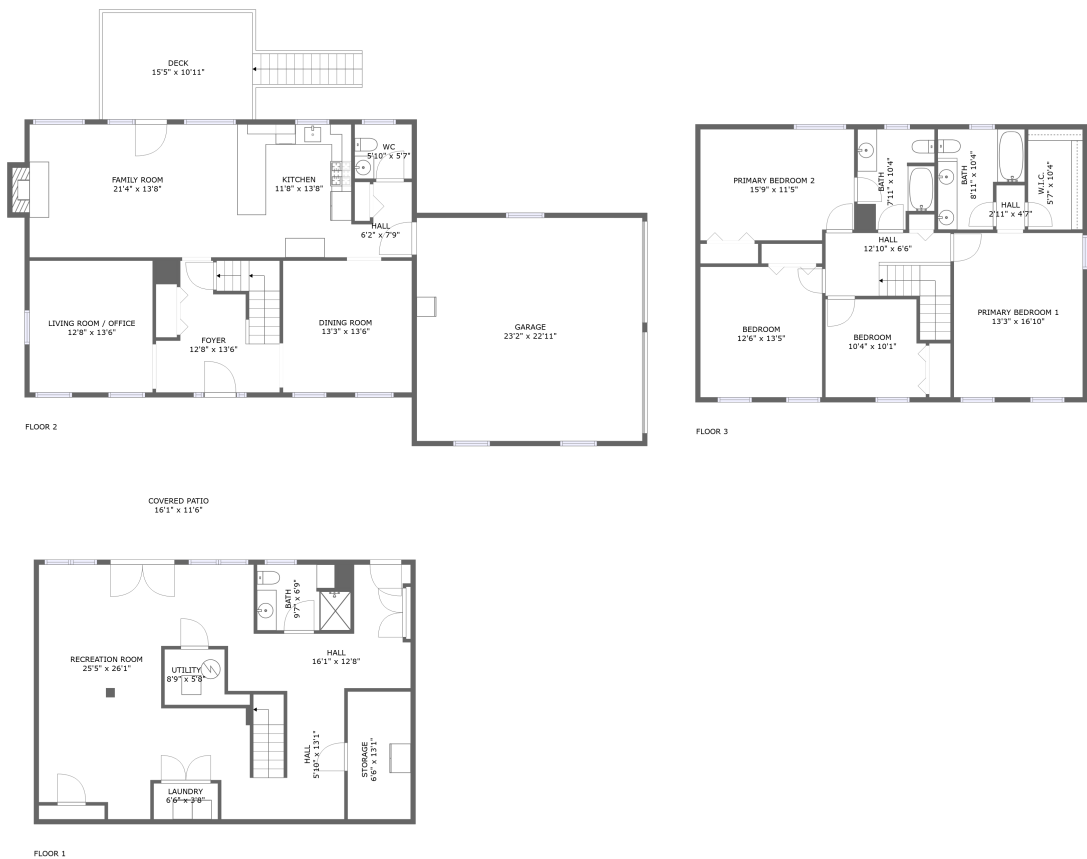


Home report

1382 Deer Creek Drive, Bedford, Bedford County, Virginia,  
United States, 24523



**Total Area: 3021 sq. ft**  
Below Ground: 863 sq. ft, Floor 2: 1080 sq. ft, Floor 3: 1078 sq. ft  
Excluded: Storage 85 sq. ft, Utility 38 sq. ft, Covered patio 95 sq. ft, Undefined 10 sq. ft,  
Garage 530 sq. ft, Deck 168 sq. ft, Fireplace 10 sq. ft, Walls: 235 sq. ft

Property summary

**3**  
Floors

**4**  
Bedrooms

**3**  
Bathrooms

Home report

**1382 Deer Creek Drive, Bedford, Bedford County, Virginia,  
United States, 24523**



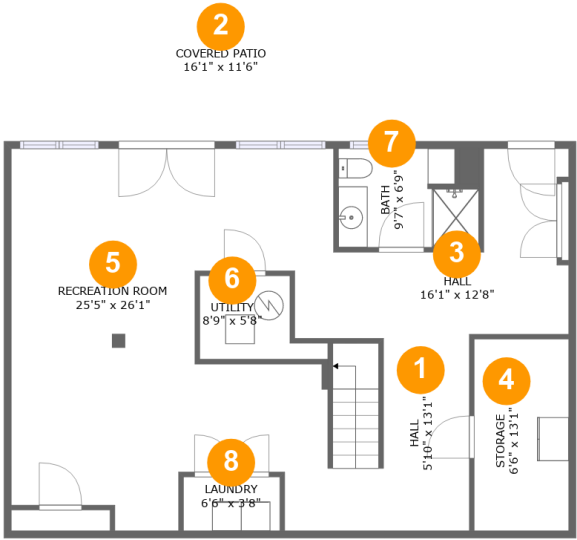
**1**  
Half baths



**1**  
Garages

Home report

1382 Deer Creek Drive, Bedford, Bedford County, Virginia,  
United States, 24523



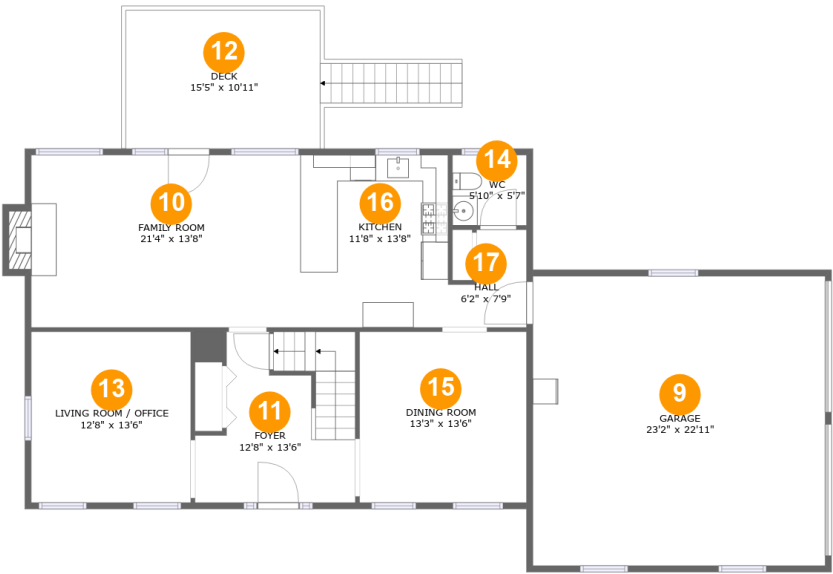
Room dimensions

Floor 1 Below ground Total:863sqft Excluded: 228sqft

#		Max Dimensions	sqft	Included
1	Hall	5'10" x 13'1"	77 sq. ft	Yes
2	Covered Patio	16'1" x 11'6"	186 sq. ft	No
3	Hall	16'1" x 12'8"	129 sq. ft	Yes
4	Storage	6'6" x 13'1"	85 sq. ft	No
5	Recreation Room	25'5" x 26'1"	524 sq. ft	Yes
6	Utility	8'9" x 5'8"	38 sq. ft	No
7	Bath	9'7" x 6'9"	60 sq. ft	Yes
8	Laundry	6'6" x 3'8"	24 sq. ft	Yes

Home report

1382 Deer Creek Drive, Bedford, Bedford County, Virginia,  
United States, 24523



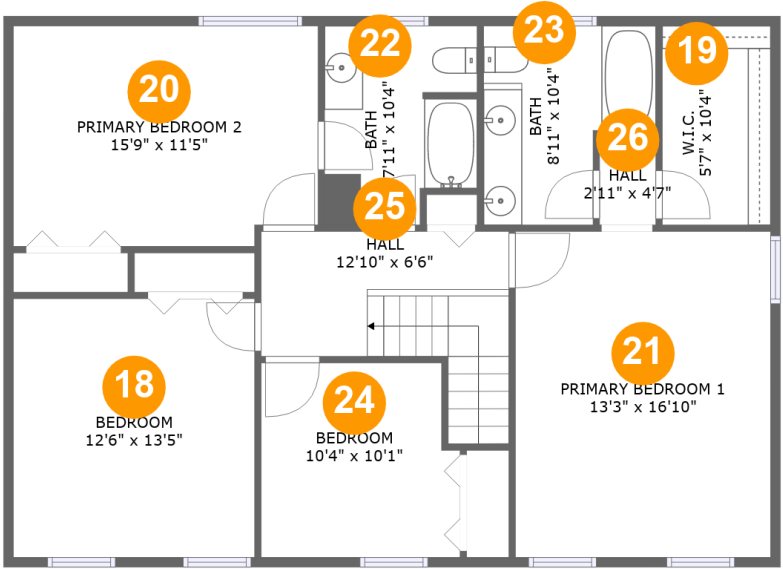
Room dimensions

Floor 2 Total:1080sqft    Excluded: 708sqft

#		Max Dimensions	sqft	Included
9	Garage	23'2" x 22'11"	530 sq. ft	No
10	Family Room	21'4" x 13'8"	299 sq. ft	Yes
11	Foyer	12'8" x 13'6"	148 sq. ft	Yes
12	Deck	15'5" x 10'11"	168 sq. ft	No
13	Living Room / Office	12'8" x 13'6"	171 sq. ft	Yes
14	WC	5'10" x 5'7"	33 sq. ft	Yes
15	Dining Room	13'3" x 13'6"	179 sq. ft	Yes
16	Kitchen	11'8" x 13'8"	159 sq. ft	Yes
17	Hall	6'2" x 7'9"	38 sq. ft	Yes

Home report

1382 Deer Creek Drive, Bedford, Bedford County, Virginia,  
United States, 24523

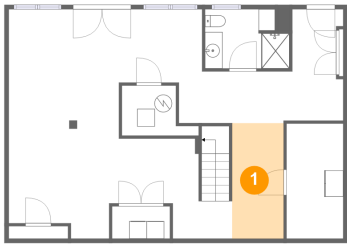


Room dimensions

Floor 3 Total:1078sqft Excluded: 0sqft

#		Max Dimensions	sqft	Included
18	Bedroom	12'6" x 13'5"	167 sq. ft	Yes
19	W.I.C.	5'7" x 10'4"	58 sq. ft	Yes
20	Primary Bedroom 2	15'9" x 11'5"	176 sq. ft	Yes
21	Primary Bedroom 1	13'3" x 16'10"	223 sq. ft	Yes
22	Bath	7'11" x 10'4"	70 sq. ft	Yes
23	Bath	8'11" x 10'4"	76 sq. ft	Yes
24	Bedroom	10'4" x 10'1"	99 sq. ft	Yes
25	Hall	12'10" x 6'6"	97 sq. ft	Yes
26	Hall	2'11" x 4'7"	13 sq. ft	Yes

1 Floor 1 - Hall



Max Dimensions: 5'10" x 13'1"  
Calculated Area: 77 sq. ft  
Included: Yes

Heated: Yes  
Finished: Yes  
Enclosed: Yes  
Contiguous: Yes  
Permitted: Yes  
Wet space: No  
Addition: No  
Conversion: No

2 Floor 1 - Covered Patio

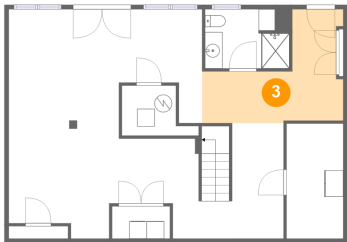


Max Dimensions: 16'1" x 11'6"  
Calculated Area: 186 sq. ft  
Included: No

Heated: No  
Finished: Yes  
Enclosed: No  
Contiguous: Yes  
Permitted: Yes  
Wet space: No  
Addition: No  
Conversion: No

1382 Deer Creek Drive, Bedford, Bedford County, Virginia,  
United States, 24523

3 Floor 1 - Hall



Max Dimensions: 16'1" x 12'8"  
Calculated Area: 129 sq. ft  
Included: Yes

Heated: Yes  
Finished: Yes  
Enclosed: Yes  
Contiguous: Yes  
Permitted: Yes  
Wet space: No  
Addition: No  
Conversion: No

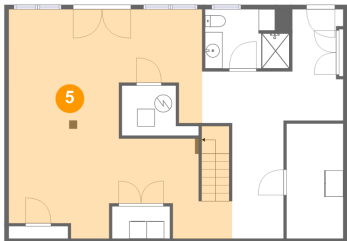
4 Floor 1 - Storage



Max Dimensions: 6'6" x 13'1"  
Calculated Area: 85 sq. ft  
Included: No

Heated: No  
Finished: No  
Enclosed: No  
Contiguous: Yes  
Permitted: Yes  
Wet space: No  
Addition: No  
Conversion: No

5 Floor 1 - Recreation Room



Max Dimensions: 25'5" x 26'1"  
Calculated Area: 524 sq. ft  
Included: Yes

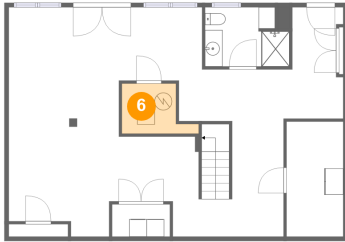
Heated: Yes  
Finished: Yes  
Enclosed: Yes  
Contiguous: Yes  
Permitted: Yes  
Wet space: No  
Addition: No  
Conversion: No

## Home report

1382 Deer Creek Drive, Bedford, Bedford County, Virginia,  
United States, 24523

### 6 Floor 1 - Utility

---



Max Dimensions: 8'9" x 5'8"  
Calculated Area: 38 sq. ft  
Included: No

Heated: Yes  
Finished: No  
Enclosed: Yes  
Contiguous: Yes  
Permitted: Yes  
Wet space: No  
Addition: No  
Conversion: No

### 7 Floor 1 - Bath

---

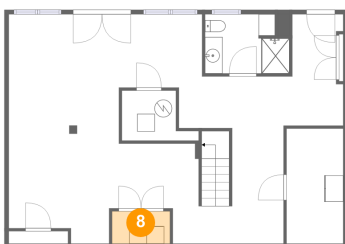


Max Dimensions: 9'7" x 6'9"  
Calculated Area: 60 sq. ft  
Included: Yes

Heated: Yes  
Finished: Yes  
Enclosed: Yes  
Contiguous: Yes  
Permitted: Yes  
Wet space: Yes  
Addition: No  
Conversion: No

### 8 Floor 1 - Laundry

---



Max Dimensions: 6'6" x 3'8"  
Calculated Area: 24 sq. ft  
Included: Yes

Heated: Yes  
Finished: Yes  
Enclosed: Yes  
Contiguous: Yes  
Permitted: Yes  
Wet space: No  
Addition: No  
Conversion: No



## Home report

1382 Deer Creek Drive, Bedford, Bedford County, Virginia,  
United States, 24523

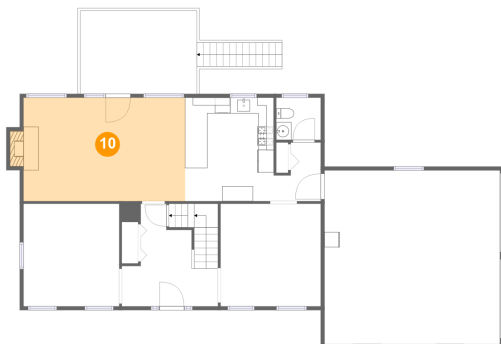
### 9 Floor 2 - Garage



Max Dimensions: 23'2" x 22'11"  
Calculated Area: 530 sq. ft  
Included: No

Heated: No  
Finished: No  
Enclosed: Yes  
Contiguous: Yes  
Permitted: Yes  
Wet space: No  
Addition: No  
Conversion: No

### 10 Floor 2 - Family Room



Max Dimensions: 21'4" x 13'8"  
Calculated Area: 299 sq. ft  
Included: Yes

Heated: Yes  
Finished: Yes  
Enclosed: Yes  
Contiguous: Yes  
Permitted: Yes  
Wet space: No  
Addition: No  
Conversion: No

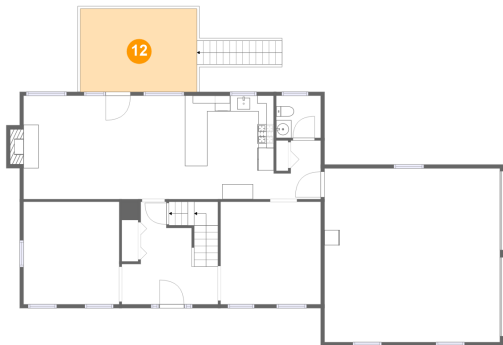
### 11 Floor 2 - Foyer



Max Dimensions: 12'8" x 13'6"  
Calculated Area: 148 sq. ft  
Included: Yes

Heated: Yes  
Finished: Yes  
Enclosed: Yes  
Contiguous: Yes  
Permitted: Yes  
Wet space: No  
Addition: No  
Conversion: No

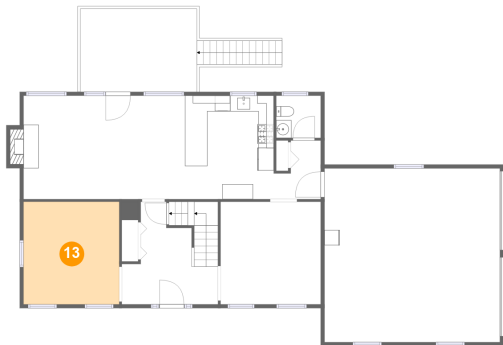
12 Floor 2 - Deck



Max Dimensions: 15'5" x 10'11"  
Calculated Area: 168 sq. ft  
Included: No

Heated: No  
Finished: Yes  
Enclosed: No  
Contiguous: Yes  
Permitted: Yes  
Wet space: No  
Addition: No  
Conversion: No

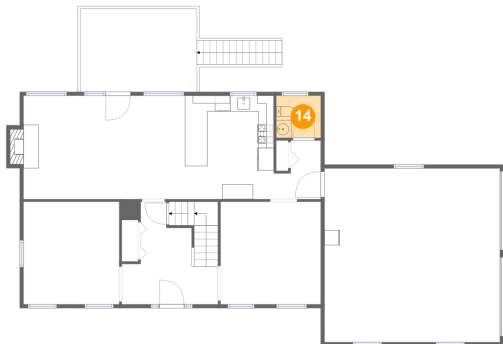
13 Floor 2 - Living Room / Office



Max Dimensions: 12'8" x 13'6"  
Calculated Area: 171 sq. ft  
Included: Yes

Heated: Yes  
Finished: Yes  
Enclosed: Yes  
Contiguous: Yes  
Permitted: Yes  
Wet space: No  
Addition: No  
Conversion: No

14 Floor 2 - WC



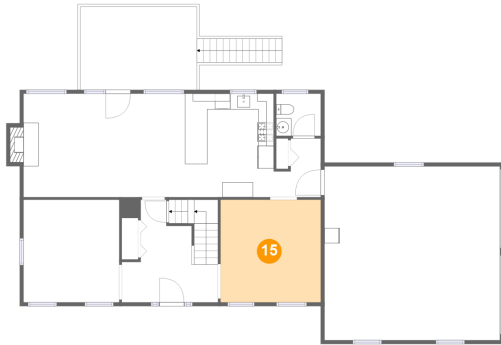
Max Dimensions: 5'10" x 5'7"  
Calculated Area: 33 sq. ft  
Included: Yes

Heated: Yes  
Finished: Yes  
Enclosed: Yes  
Contiguous: Yes  
Permitted: Yes  
Wet space: Yes  
Addition: No  
Conversion: No

## Home report

1382 Deer Creek Drive, Bedford, Bedford County, Virginia,  
United States, 24523

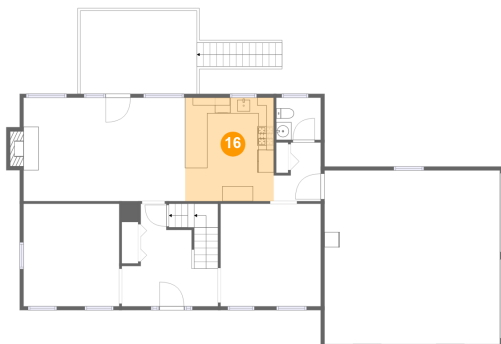
### 15 Floor 2 - Dining Room



Max Dimensions: 13'3" x 13'6"  
Calculated Area: 179 sq. ft  
Included: Yes

Heated: Yes  
Finished: Yes  
Enclosed: Yes  
Contiguous: Yes  
Permitted: Yes  
Wet space: No  
Addition: No  
Conversion: No

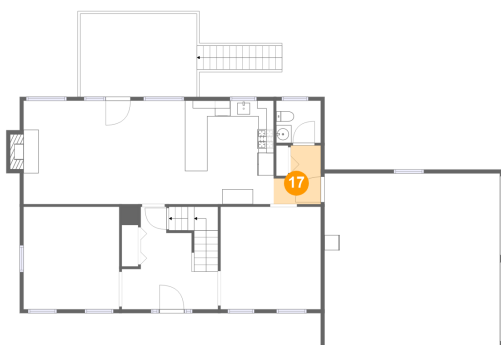
### 16 Floor 2 - Kitchen



Max Dimensions: 11'8" x 13'8"  
Calculated Area: 159 sq. ft  
Included: Yes

Heated: Yes  
Finished: Yes  
Enclosed: Yes  
Contiguous: Yes  
Permitted: Yes  
Wet space: No  
Addition: No  
Conversion: No

### 17 Floor 2 - Hall

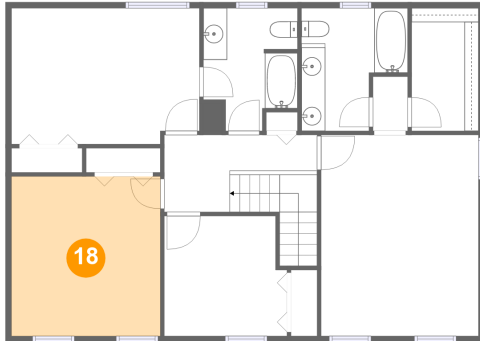


Max Dimensions: 6'2" x 7'9"  
Calculated Area: 38 sq. ft  
Included: Yes

Heated: Yes  
Finished: Yes  
Enclosed: Yes  
Contiguous: Yes  
Permitted: Yes  
Wet space: No  
Addition: No  
Conversion: No

1382 Deer Creek Drive, Bedford, Bedford County, Virginia,  
United States, 24523

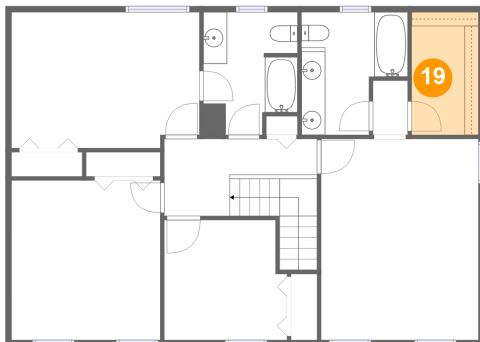
### 18 Floor 3 - Bedroom



Max Dimensions: 12'6" x 13'5"  
Calculated Area: 167 sq. ft  
Included: Yes

Heated: Yes  
Finished: Yes  
Enclosed: Yes  
Contiguous: Yes  
Permitted: Yes  
Wet space: No  
Addition: No  
Conversion: No

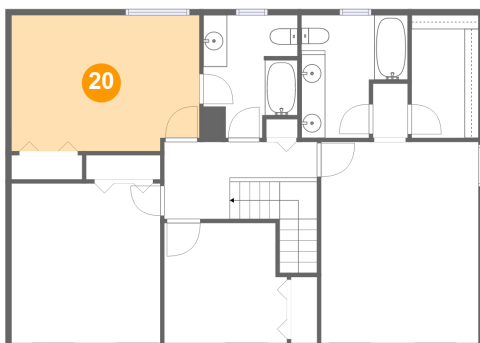
### 19 Floor 3 - W.I.C.



Max Dimensions: 5'7" x 10'4"  
Calculated Area: 58 sq. ft  
Included: Yes

Heated: Yes  
Finished: Yes  
Enclosed: Yes  
Contiguous: Yes  
Permitted: Yes  
Wet space: No  
Addition: No  
Conversion: No

### 20 Floor 3 - Primary Bedroom 2

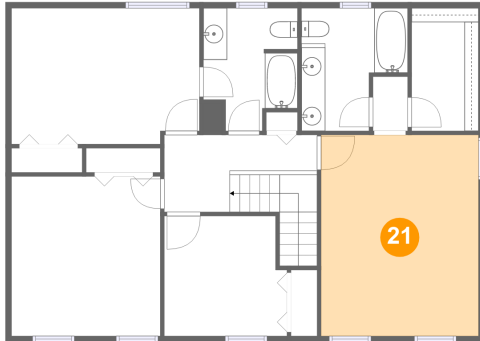


Max Dimensions: 15'9" x 11'5"  
Calculated Area: 176 sq. ft  
Included: Yes

Heated: Yes  
Finished: Yes  
Enclosed: Yes  
Contiguous: Yes  
Permitted: Yes  
Wet space: No  
Addition: No  
Conversion: No

1382 Deer Creek Drive, Bedford, Bedford County, Virginia,  
United States, 24523

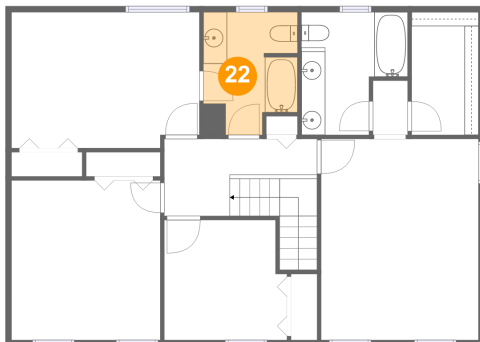
### 21 Floor 3 - Primary Bedroom 1



Max Dimensions: 13'3" x 16'10"  
Calculated Area: 223 sq. ft  
Included: Yes

Heated: Yes  
Finished: Yes  
Enclosed: Yes  
Contiguous: Yes  
Permitted: Yes  
Wet space: No  
Addition: No  
Conversion: No

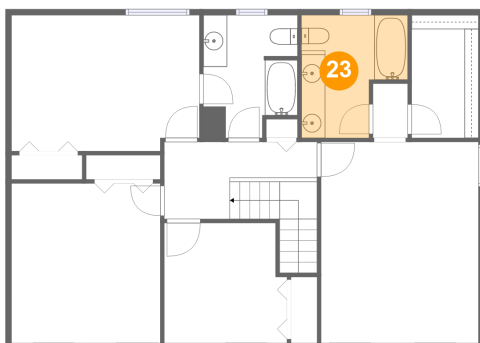
### 22 Floor 3 - Bath



Max Dimensions: 7'11" x 10'4"  
Calculated Area: 70 sq. ft  
Included: Yes

Heated: Yes  
Finished: Yes  
Enclosed: Yes  
Contiguous: Yes  
Permitted: Yes  
Wet space: Yes  
Addition: No  
Conversion: No

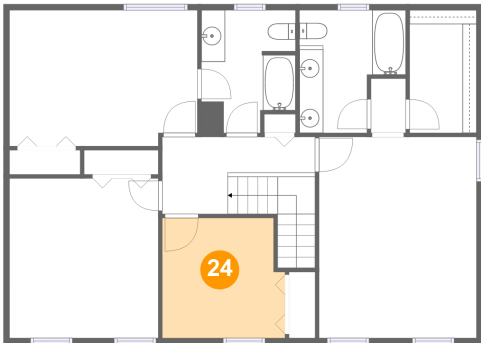
### 23 Floor 3 - Bath



Max Dimensions: 8'11" x 10'4"  
Calculated Area: 76 sq. ft  
Included: Yes

Heated: Yes  
Finished: Yes  
Enclosed: Yes  
Contiguous: Yes  
Permitted: Yes  
Wet space: Yes  
Addition: No  
Conversion: No

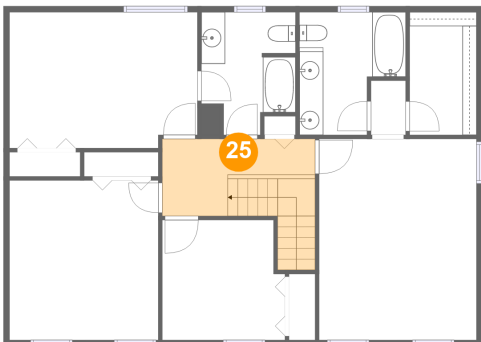
24 Floor 3 - Bedroom



Max Dimensions: 10'4" x 10'1"  
Calculated Area: 99 sq. ft  
Included: Yes

Heated: Yes  
Finished: Yes  
Enclosed: Yes  
Contiguous: Yes  
Permitted: Yes  
Wet space: No  
Addition: No  
Conversion: No

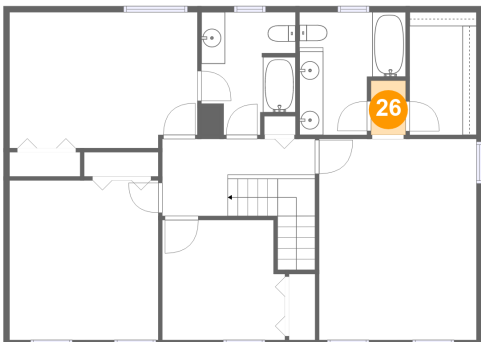
25 Floor 3 - Hall



Max Dimensions: 12'10" x 6'6"  
Calculated Area: 97 sq. ft  
Included: Yes

Heated: Yes  
Finished: Yes  
Enclosed: Yes  
Contiguous: Yes  
Permitted: Yes  
Wet space: No  
Addition: No  
Conversion: No

26 Floor 3 - Hall



Max Dimensions: 2'11" x 4'7"  
Calculated Area: 13 sq. ft  
Included: Yes

Heated: Yes  
Finished: Yes  
Enclosed: Yes  
Contiguous: Yes  
Permitted: Yes  
Wet space: No  
Addition: No  
Conversion: No