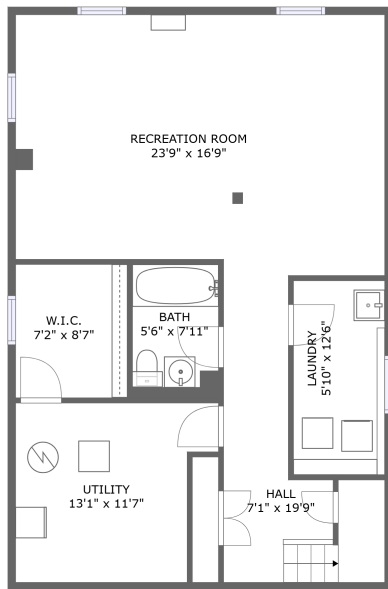
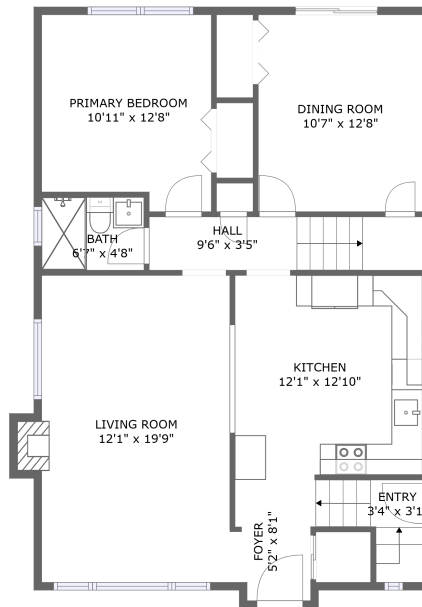


Home report

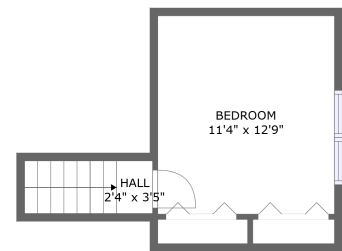
1211 Woodside Drive, Braemar Park, Copeland Park, Ottawa,
Ontario, Canada, K2C 2G7



FLOOR 1



FLOOR 2



FLOOR 3

Total Area: 1762 sq. ft

Below Ground: 670 sq. ft, Floor 2: 903 sq. ft, Floor 3: 189 sq. ft

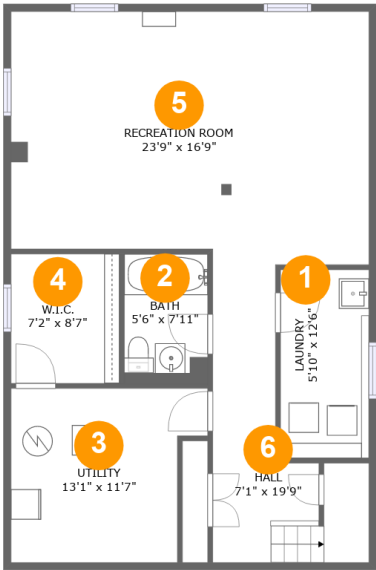
Excluded: Utility 136 sq. ft, W.I.C. 62 sq. ft, Fireplace 7 sq. ft, Low ceiling 7 sq. ft, Walls: 157 sq. ft

Property summary



Home report

1211 Woodside Drive, Braemar Park, Copeland Park, Ottawa,
Ontario, Canada, K2C 2G7



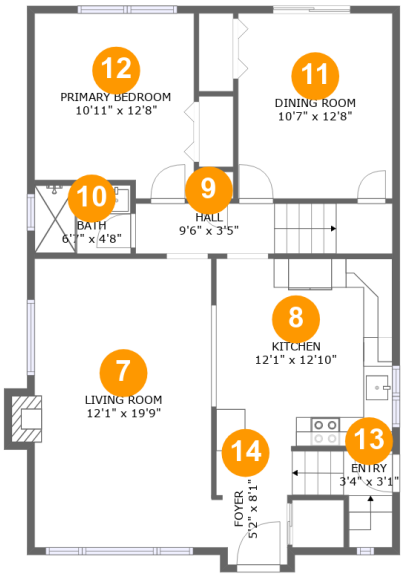
Room dimensions

Floor 1 Below ground Total:670sqft Excluded: 198sqft

#		Max Dimensions	sqft	Included
1	Laundry	5'10" x 12'6"	73 sq. ft	Yes
2	Bath	5'6" x 7'11"	47 sq. ft	Yes
3	Utility	13'1" x 11'7"	134 sq. ft	No
4	W.I.C.	7'2" x 8'7"	62 sq. ft	No
5	Recreation Room	23'9" x 16'9"	385 sq. ft	Yes
6	Hall	7'1" x 19'9"	122 sq. ft	Yes

Home report

1211 Woodside Drive, Braemar Park, Copeland Park, Ottawa,
Ontario, Canada, K2C 2G7



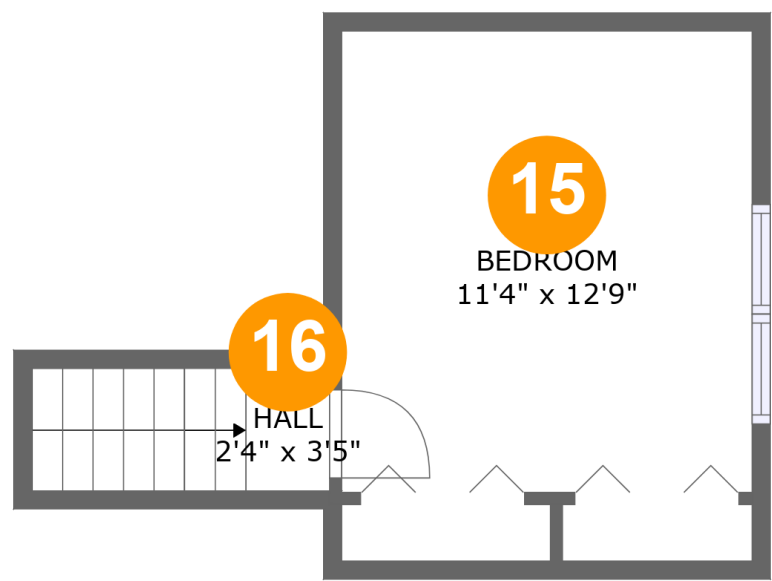
Room dimensions

Floor 2 Total:903sqft Excluded: 7sqft

#		Max Dimensions	sqft	Included
7	Living Room	12'1" x 19'9"	244 sq. ft	Yes
8	Kitchen	12'1" x 12'10"	158 sq. ft	Yes
9	Hall	9'6" x 3'5"	60 sq. ft	Yes
10	Bath	6'7" x 4'8"	31 sq. ft	Yes
11	Dining Room	10'7" x 12'8"	134 sq. ft	Yes
12	Primary Bedroom	10'11" x 12'8"	130 sq. ft	Yes
13	Entry	3'4" x 3'1"	21 sq. ft	Yes
14	Foyer	5'2" x 8'1"	52 sq. ft	Yes

Home report

1211 Woodside Drive, Braemar Park, Copeland Park, Ottawa,
Ontario, Canada, K2C 2G7



Room dimensions

Floor 3 Total:189sqft Excluded: 7sqft

#		Max Dimensions	sqft	Included
15	Bedroom	11'4" x 12'9"	138 sq. ft	Yes
16	Hall	2'4" x 3'5"	28 sq. ft	Yes

1211 Woodside Drive, Braemar Park, Copeland Park, Ottawa,
Ontario, Canada, K2C 2G7

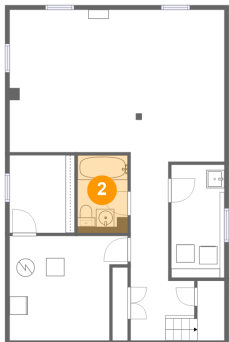
1 Floor 1 - Laundry



Max Dimensions: 5'10" x 12'6"
Calculated Area: 73 sq. ft
Included: Yes

Heated: Yes
Finished: Yes
Enclosed: Yes
Contiguous: Yes
Permitted: Yes
Wet space: No
Addition: No
Conversion: No

2 Floor 1 - Bath



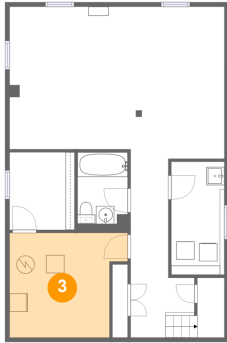
Max Dimensions: 5'6" x 7'11"
Calculated Area: 47 sq. ft
Included: Yes

Heated: Yes
Finished: Yes
Enclosed: Yes
Contiguous: Yes
Permitted: Yes
Wet space: Yes
Addition: No
Conversion: No

Home report

1211 Woodside Drive, Braemar Park, Copeland Park, Ottawa,
Ontario, Canada, K2C 2G7

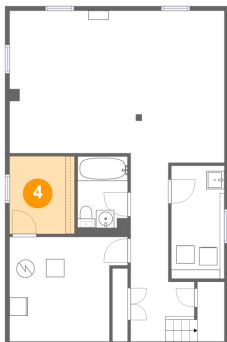
3 Floor 1 - Utility



Max Dimensions: 13'1" x 11'7"
Calculated Area: 134 sq. ft
Included: No

Heated: Yes
Finished: No
Enclosed: Yes
Contiguous: Yes
Permitted: Yes
Wet space: No
Addition: No
Conversion: No

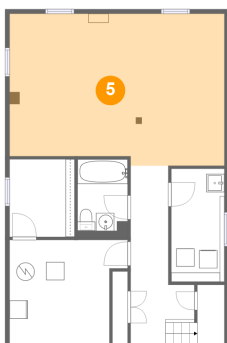
4 Floor 1 - W.I.C.



Max Dimensions: 7'2" x 8'7"
Calculated Area: 62 sq. ft
Included: No

Heated: Yes
Finished: No
Enclosed: Yes
Contiguous: Yes
Permitted: Yes
Wet space: No
Addition: No
Conversion: No

5 Floor 1 - Recreation Room

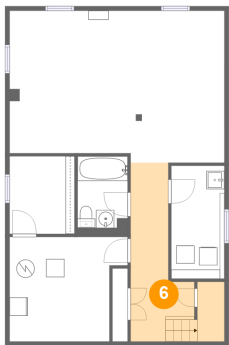


Max Dimensions: 23'9" x 16'9"
Calculated Area: 385 sq. ft
Included: Yes

Heated: Yes
Finished: Yes
Enclosed: Yes
Contiguous: Yes
Permitted: Yes
Wet space: No
Addition: No
Conversion: No

1211 Woodside Drive, Braemar Park, Copeland Park, Ottawa,
Ontario, Canada, K2C 2G7

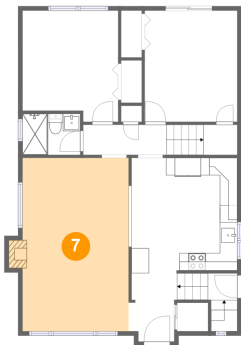
6 Floor 1 - Hall



Max Dimensions: 7'1" x 19'9"
Calculated Area: 122 sq. ft
Included: Yes

Heated: Yes
Finished: Yes
Enclosed: Yes
Contiguous: Yes
Permitted: Yes
Wet space: No
Addition: No
Conversion: No

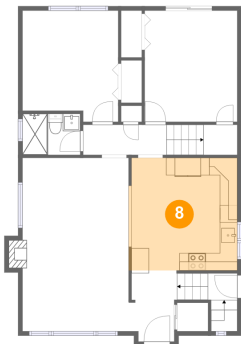
7 Floor 2 - Living Room



Max Dimensions: 12'1" x 19'9"
Calculated Area: 244 sq. ft
Included: Yes

Heated: Yes
Finished: Yes
Enclosed: Yes
Contiguous: Yes
Permitted: Yes
Wet space: No
Addition: No
Conversion: No

8 Floor 2 - Kitchen

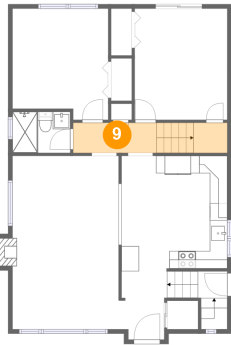


Max Dimensions: 12'1" x 12'10"
Calculated Area: 158 sq. ft
Included: Yes

Heated: Yes
Finished: Yes
Enclosed: Yes
Contiguous: Yes
Permitted: Yes
Wet space: No
Addition: No
Conversion: No

1211 Woodside Drive, Braemar Park, Copeland Park, Ottawa,
Ontario, Canada, K2C 2G7

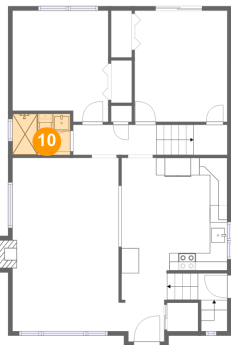
9 Floor 2 - Hall



Max Dimensions: 9'6" x 3'5"
Calculated Area: 60 sq. ft
Included: Yes

Heated: Yes
Finished: Yes
Enclosed: Yes
Contiguous: Yes
Permitted: Yes
Wet space: No
Addition: No
Conversion: No

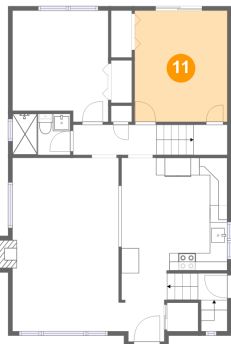
10 Floor 2 - Bath



Max Dimensions: 6'7" x 4'8"
Calculated Area: 31 sq. ft
Included: Yes

Heated: Yes
Finished: Yes
Enclosed: Yes
Contiguous: Yes
Permitted: Yes
Wet space: Yes
Addition: No
Conversion: No

11 Floor 2 - Dining Room

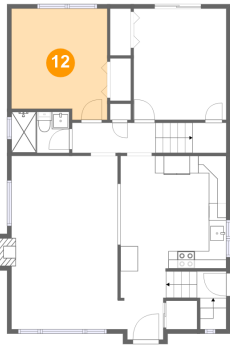


Max Dimensions: 10'7" x 12'8"
Calculated Area: 134 sq. ft
Included: Yes

Heated: Yes
Finished: Yes
Enclosed: Yes
Contiguous: Yes
Permitted: Yes
Wet space: No
Addition: No
Conversion: No

1211 Woodside Drive, Braemar Park, Copeland Park, Ottawa,
Ontario, Canada, K2C 2G7

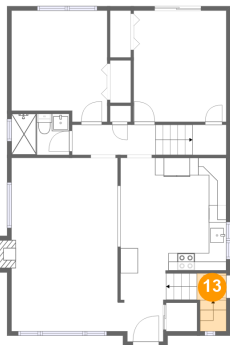
12 Floor 2 - Primary Bedroom



Max Dimensions: 10'11" x 12'8"
Calculated Area: 130 sq. ft
Included: Yes

Heated: Yes
Finished: Yes
Enclosed: Yes
Contiguous: Yes
Permitted: Yes
Wet space: No
Addition: No
Conversion: No

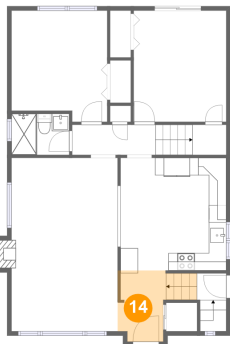
13 Floor 2 - Entry



Max Dimensions: 3'4" x 3'1"
Calculated Area: 21 sq. ft
Included: Yes

Heated: Yes
Finished: Yes
Enclosed: Yes
Contiguous: Yes
Permitted: Yes
Wet space: No
Addition: No
Conversion: No

14 Floor 2 - Foyer

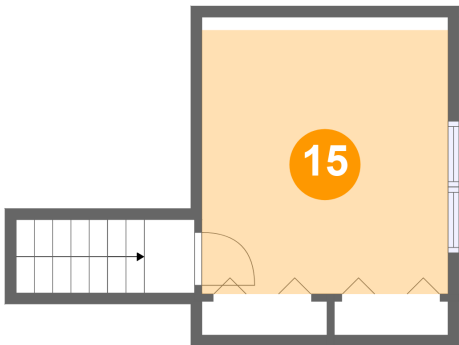


Max Dimensions: 5'2" x 8'1"
Calculated Area: 52 sq. ft
Included: Yes

Heated: Yes
Finished: Yes
Enclosed: Yes
Contiguous: Yes
Permitted: Yes
Wet space: No
Addition: No
Conversion: No

1211 Woodside Drive, Braemar Park, Copeland Park, Ottawa,
Ontario, Canada, K2C 2G7

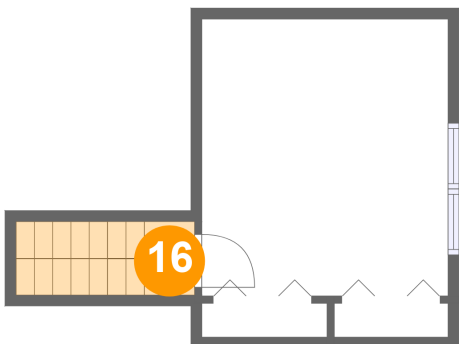
15 Floor 3 - Bedroom



Max Dimensions: 11'4" x 12'9"
Calculated Area: 138 sq. ft
Included: Yes

Heated: Yes
Finished: Yes
Enclosed: Yes
Contiguous: Yes
Permitted: Yes
Wet space: No
Addition: No
Conversion: No

16 Floor 3 - Hall



Max Dimensions: 2'4" x 3'5"
Calculated Area: 28 sq. ft
Included: Yes

Heated: Yes
Finished: Yes
Enclosed: Yes
Contiguous: Yes
Permitted: Yes
Wet space: No
Addition: No
Conversion: No