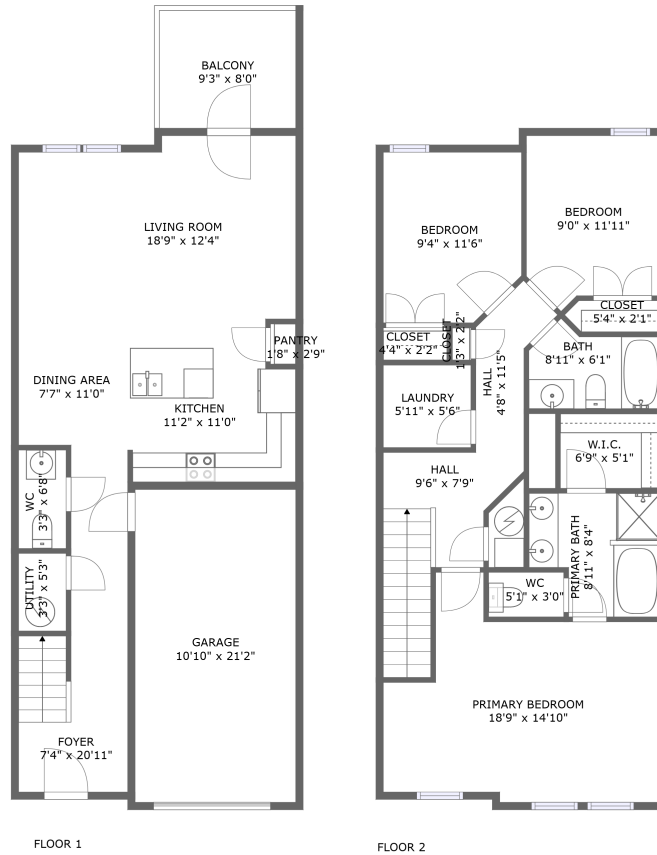



# 2516 Newsome Mill Ln, Nashville, Davidson County, Tennessee, United States, 37221



## Property summary

 **1** Garages

 **3** Bedrooms

 **2** Bathrooms

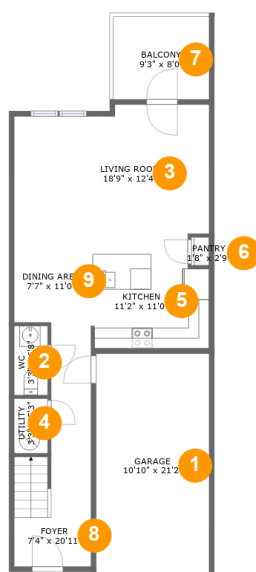
 **1** Half baths

 **2** Floors

 **1,508** Gross living area sqft

 **1,827** Total sqft

# 2516 Newsome Mill Ln, Nashville, Davidson County, Tennessee, United States, 37221



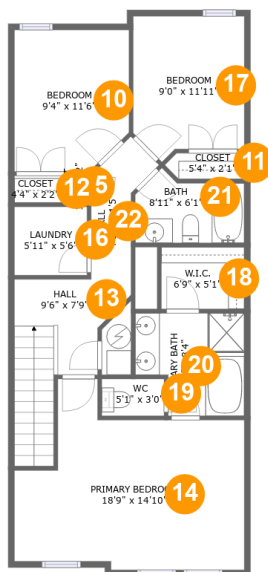
## Room dimensions

Floor 1

Total sqft: 957 Living area: 638

#		Dimensions	sqft	Counted as living area
1	Garage	10'10" x 21'2"	230 sq. ft	No
2	WC	3'3" x 6'8"	21 sq. ft	Yes
3	Living Room	18'9" x 12'4"	221 sq. ft	Yes
4	Utility	3'3" x 5'3"	17 sq. ft	Yes
5	Kitchen	11'2" x 11'0"	116 sq. ft	Yes
6	Pantry	1'8" x 2'9"	5 sq. ft	Yes
7	Balcony	9'3" x 8'0"	73 sq. ft	No
8	Foyer	7'4" x 20'11"	117 sq. ft	Yes
9	Dining Area	7'7" x 11'0"	74 sq. ft	Yes

# 2516 Newsome Mill Ln, Nashville, Davidson County, Tennessee, United States, 37221



## Room dimensions

Floor 2

Total sqft: 870 Living area: 870

#		Dimensions	sqft	Counted as living area
10	Bedroom	9'4" x 11'6"	103 sq. ft	Yes
11	Closet	5'4" x 2'1"	13 sq. ft	Yes
12	Closet	4'4" x 2'2"	9 sq. ft	Yes
13	Hall	9'6" x 7'9"	84 sq. ft	Yes
14	Primary Bedroom	18'9" x 14'10"	219 sq. ft	Yes
15	Closet	1'3" x 2'2"	3 sq. ft	Yes
16	Laundry	5'11" x 5'6"	33 sq. ft	Yes
17	Bedroom	9'0" x 11'11"	98 sq. ft	Yes
18	W.I.C.	6'9" x 5'1"	34 sq. ft	Yes
19	WC	5'1" x 3'0"	15 sq. ft	Yes
20	Primary Bath	8'11" x 8'4"	65 sq. ft	Yes

**2516 Newsome Mill Ln, Nashville, Davidson County,  
Tennessee, United States, 37221**

#		Dimensions	sqft	Counted as living area
21	Bath	8'11" x 6'1"	44 sq. ft	Yes
22	Hall	4'8" x 11'5"	38 sq. ft	Yes

# 2516 Newsome Mill Ln, Nashville, Davidson County, Tennessee, United States, 37221

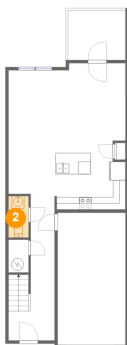
## 1 Floor 1 - Garage



**Dimensions:** 10'10" x 21'2"  
**Area:** 230 sq. ft  
**Counted as living area:** No

**Heated:** No  
**Finished:** No  
**Enclosed:** Yes  
**Contiguous:** Yes  
**Permitted:** Yes  
**Wet space:** No  
**Addition:** No  
**Conversion:** No

## 2 Floor 1 - WC



**Dimensions:** 3'3" x 6'8"  
**Area:** 21 sq. ft  
**Counted as living area:** Yes

**Heated:** Yes  
**Finished:** Yes  
**Enclosed:** Yes  
**Contiguous:** Yes  
**Permitted:** Yes  
**Wet space:** Yes  
**Addition:** No  
**Conversion:** No

# 2516 Newsome Mill Ln, Nashville, Davidson County, Tennessee, United States, 37221

## 3 Floor 1 - Living Room



Dimensions: 18'9" x 12'4"  
Area: 221 sq. ft  
Counted as living area: Yes

Heated: Yes  
Finished: Yes  
Enclosed: Yes  
Contiguous: Yes  
Permitted: Yes  
Wet space: No  
Addition: No  
Conversion: No

## 4 Floor 1 - Utility



Dimensions: 3'3" x 5'3"  
Area: 17 sq. ft  
Counted as living area: Yes

Heated: Yes  
Finished: Yes  
Enclosed: Yes  
Contiguous: Yes  
Permitted: Yes  
Wet space: No  
Addition: No  
Conversion: No

## 5 Floor 1 - Kitchen



Dimensions: 11'2" x 11'0"  
Area: 116 sq. ft  
Counted as living area: Yes

Heated: Yes  
Finished: Yes  
Enclosed: Yes  
Contiguous: Yes  
Permitted: Yes  
Wet space: No  
Addition: No  
Conversion: No

# 2516 Newsome Mill Ln, Nashville, Davidson County, Tennessee, United States, 37221

## 6 Floor 1 - Pantry



Dimensions: 1'8" x 2'9"  
Area: 5 sq. ft  
Counted as living area: Yes

Heated: Yes  
Finished: Yes  
Enclosed: Yes  
Contiguous: Yes  
Permitted: Yes  
Wet space: No  
Addition: No  
Conversion: No

## 7 Floor 1 - Balcony



Dimensions: 9'3" x 8'0"  
Area: 73 sq. ft  
Counted as living area: No

Heated: No  
Finished: Yes  
Enclosed: No  
Contiguous: Yes  
Permitted: Yes  
Wet space: No  
Addition: No  
Conversion: No

## 8 Floor 1 - Foyer



Dimensions: 7'4" x 20'11"  
Area: 117 sq. ft  
Counted as living area: Yes

Heated: Yes  
Finished: Yes  
Enclosed: Yes  
Contiguous: Yes  
Permitted: Yes  
Wet space: No  
Addition: No  
Conversion: No

# 2516 Newsome Mill Ln, Nashville, Davidson County, Tennessee, United States, 37221

## 9 Floor 1 - Dining Area



Dimensions: 7'7" x 11'0"  
Area: 74 sq. ft  
Counted as living area: Yes

Heated: Yes  
Finished: Yes  
Enclosed: Yes  
Contiguous: Yes  
Permitted: Yes  
Wet space: No  
Addition: No  
Conversion: No

## 10 Floor 2 - Bedroom



Dimensions: 9'4" x 11'6"  
Area: 103 sq. ft  
Counted as living area: Yes

Heated: Yes  
Finished: Yes  
Enclosed: Yes  
Contiguous: Yes  
Permitted: Yes  
Wet space: No  
Addition: No  
Conversion: No

## 11 Floor 2 - Closet



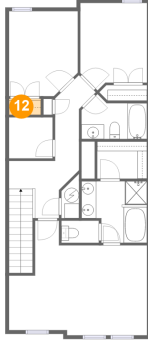
Dimensions: 5'4" x 2'1"  
Area: 13 sq. ft  
Counted as living area: Yes

Heated: Yes  
Finished: Yes  
Enclosed: Yes  
Contiguous: Yes  
Permitted: Yes  
Wet space: No  
Addition: No  
Conversion: No



**2516 Newsome Mill Ln, Nashville, Davidson County,  
Tennessee, United States, 37221**

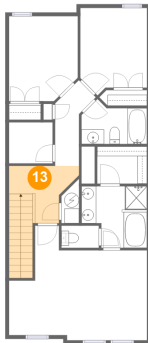
**12 Floor 2 - Closet**



**Dimensions:** 4'4" x 2'2"  
**Area:** 9 sq. ft  
**Counted as living area:** Yes

**Heated:** Yes  
**Finished:** Yes  
**Enclosed:** Yes  
**Contiguous:** Yes  
**Permitted:** Yes  
**Wet space:** No  
**Addition:** No  
**Conversion:** No

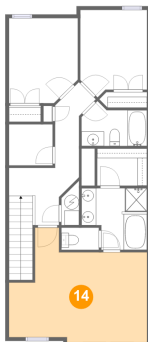
**13 Floor 2 - Hall**



**Dimensions:** 9'6" x 7'9"  
**Area:** 84 sq. ft  
**Counted as living area:** Yes

**Heated:** Yes  
**Finished:** Yes  
**Enclosed:** Yes  
**Contiguous:** Yes  
**Permitted:** Yes  
**Wet space:** No  
**Addition:** No  
**Conversion:** No

**14 Floor 2 - Primary Bedroom**

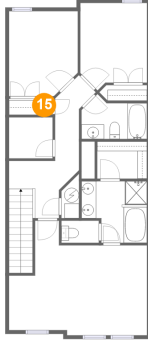


**Dimensions:** 18'9" x 14'10"  
**Area:** 219 sq. ft  
**Counted as living area:** Yes

**Heated:** Yes  
**Finished:** Yes  
**Enclosed:** Yes  
**Contiguous:** Yes  
**Permitted:** Yes  
**Wet space:** No  
**Addition:** No  
**Conversion:** No

**2516 Newsome Mill Ln, Nashville, Davidson County,  
Tennessee, United States, 37221**

**15 Floor 2 - Closet**



**Dimensions:** 1'3" x 2'2"  
**Area:** 3 sq. ft  
**Counted as living area:** Yes

**Heated:** Yes  
**Finished:** Yes  
**Enclosed:** Yes  
**Contiguous:** Yes  
**Permitted:** Yes  
**Wet space:** No  
**Addition:** No  
**Conversion:** No

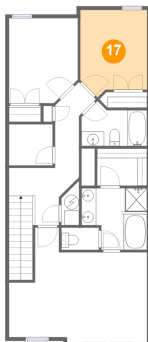
**16 Floor 2 - Laundry**



**Dimensions:** 5'11" x 5'6"  
**Area:** 33 sq. ft  
**Counted as living area:** Yes

**Heated:** Yes  
**Finished:** Yes  
**Enclosed:** Yes  
**Contiguous:** Yes  
**Permitted:** Yes  
**Wet space:** No  
**Addition:** No  
**Conversion:** No

**17 Floor 2 - Bedroom**

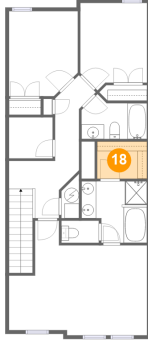


**Dimensions:** 9'0" x 11'11"  
**Area:** 98 sq. ft  
**Counted as living area:** Yes

**Heated:** Yes  
**Finished:** Yes  
**Enclosed:** Yes  
**Contiguous:** Yes  
**Permitted:** Yes  
**Wet space:** No  
**Addition:** No  
**Conversion:** No

**2516 Newsome Mill Ln, Nashville, Davidson County,  
Tennessee, United States, 37221**

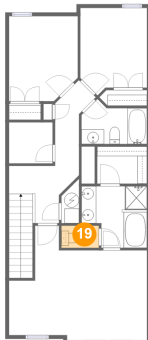
**18 Floor 2 - W.I.C.**



Dimensions: 6'9" x 5'1"  
Area: 34 sq. ft  
Counted as living area: Yes

Heated: Yes  
Finished: Yes  
Enclosed: Yes  
Contiguous: Yes  
Permitted: Yes  
Wet space: No  
Addition: No  
Conversion: No

**19 Floor 2 - WC**



Dimensions: 5'1" x 3'0"  
Area: 15 sq. ft  
Counted as living area: Yes

Heated: Yes  
Finished: Yes  
Enclosed: Yes  
Contiguous: Yes  
Permitted: Yes  
Wet space: Yes  
Addition: No  
Conversion: No

**20 Floor 2 - Primary Bath**

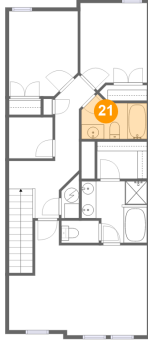


Dimensions: 8'11" x 8'4"  
Area: 65 sq. ft  
Counted as living area: Yes

Heated: Yes  
Finished: Yes  
Enclosed: Yes  
Contiguous: Yes  
Permitted: Yes  
Wet space: Yes  
Addition: No  
Conversion: No

**2516 Newsome Mill Ln, Nashville, Davidson County,  
Tennessee, United States, 37221**

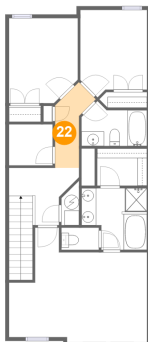
**21 Floor 2 - Bath**



**Dimensions: 8'11" x 6'1"**  
**Area: 44 sq. ft**  
**Counted as living area: Yes**

**Heated: Yes**  
**Finished: Yes**  
**Enclosed: Yes**  
**Contiguous: Yes**  
**Permitted: Yes**  
**Wet space: Yes**  
**Addition: No**  
**Conversion: No**

**22 Floor 2 - Hall**



**Dimensions: 4'8" x 11'5"**  
**Area: 38 sq. ft**  
**Counted as living area: Yes**

**Heated: Yes**  
**Finished: Yes**  
**Enclosed: Yes**  
**Contiguous: Yes**  
**Permitted: Yes**  
**Wet space: No**  
**Addition: No**  
**Conversion: No**