

Home report

1907 Canterbury Road Southwest, Raleigh Court, Roanoke,
Roanoke city, Virginia, United States, 24015




Total Area: 1375 sq. ft

Below Ground: 47 sq. ft, Floor 2: 697 sq. ft, Floor 3: 631 sq. ft

Excluded: Utility 61 sq. ft, Basement 359 sq. ft, Undefined 28 sq. ft, Room 199 sq. ft, Porch 207 sq. ft, Patio 40 sq. ft, Fireplace 7 sq. ft, Walls: 160 sq. ft

Property summary

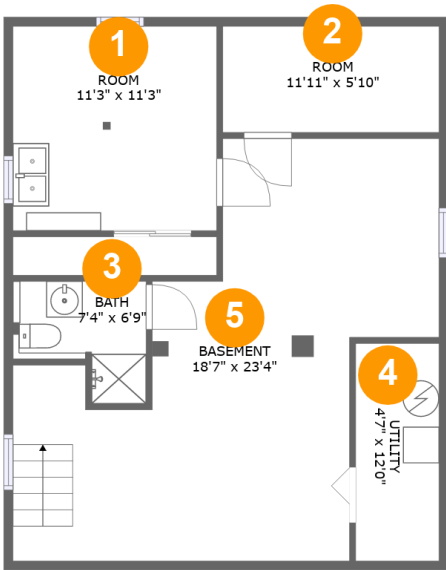
 3 Floors

 3 Bedrooms

 3 Bathrooms

Home report

1907 Canterbury Road Southwest, Raleigh Court, Roanoke,
Roanoke city, Virginia, United States, 24015



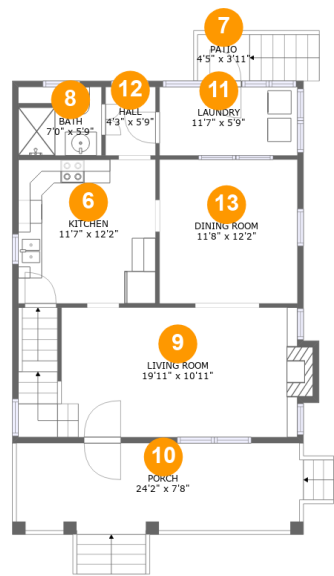
Room dimensions

Floor 1 Below ground Total:47sqft Excluded: 647sqft

#		Max Dimensions	sqft	Included
1	Room	11'3" x 11'3"	127 sq. ft	No
2	Room	11'11" x 5'10"	70 sq. ft	No
3	Bath	7'4" x 6'9"	39 sq. ft	Yes
4	Utility	4'7" x 12'0"	55 sq. ft	No
5	Basement	18'7" x 23'4"	352 sq. ft	No

Home report

1907 Canterbury Road Southwest, Raleigh Court, Roanoke,
Roanoke city, Virginia, United States, 24015



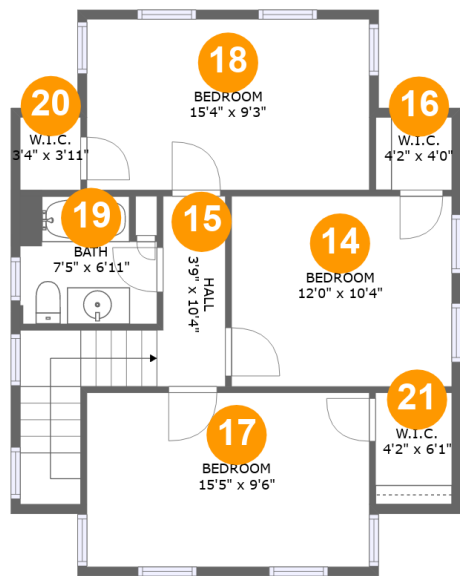
Room dimensions

Floor 2 Total:697sqft Excluded: 254sqft

#		Max Dimensions	sqft	Included
6	Kitchen	11'7" x 12'2"	140 sq. ft	Yes
7	Patio	4'5" x 3'11"	40 sq. ft	No
8	Bath	7'0" x 5'9"	39 sq. ft	Yes
9	Living Room	19'11" x 10'11"	260 sq. ft	Yes
10	Porch	24'2" x 7'8"	207 sq. ft	No
11	Laundry	11'7" x 5'9"	67 sq. ft	Yes
12	Hall	4'3" x 5'9"	24 sq. ft	Yes
13	Dining Room	11'8" x 12'2"	141 sq. ft	Yes

Home report

1907 Canterbury Road Southwest, Raleigh Court, Roanoke,
Roanoke city, Virginia, United States, 24015

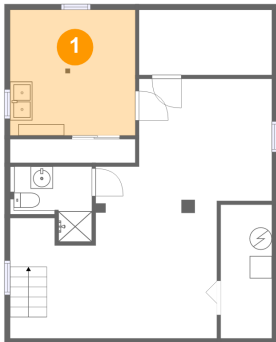


Room dimensions

Floor 3 Total:631sqft Excluded: 0sqft

#		Max Dimensions	sqft	Included
14	Bedroom	12'0" x 10'4"	124 sq. ft	Yes
15	Hall	3'9" x 10'4"	80 sq. ft	Yes
16	W.I.C.	4'2" x 4'0"	17 sq. ft	Yes
17	Bedroom	15'5" x 9'6"	146 sq. ft	Yes
18	Bedroom	15'4" x 9'3"	143 sq. ft	Yes
19	Bath	7'5" x 6'11"	48 sq. ft	Yes
20	W.I.C.	3'4" x 3'11"	13 sq. ft	Yes
21	W.I.C.	4'2" x 6'1"	25 sq. ft	Yes

1 Floor 1 - Room



Max Dimensions: 11'3" x 11'3"
Calculated Area: 127 sq. ft
Included: No

Heated: Yes
Finished: No
Enclosed: Yes
Contiguous: Yes
Permitted: Yes
Wet space: No
Addition: No
Conversion: No

2 Floor 1 - Room



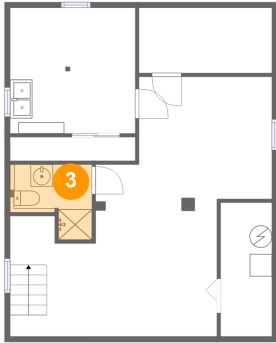
Max Dimensions: 11'11" x 5'10"
Calculated Area: 70 sq. ft
Included: No

Heated: Yes
Finished: No
Enclosed: Yes
Contiguous: Yes
Permitted: Yes
Wet space: No
Addition: No
Conversion: No

Home report

1907 Canterbury Road Southwest, Raleigh Court, Roanoke,
Roanoke city, Virginia, United States, 24015

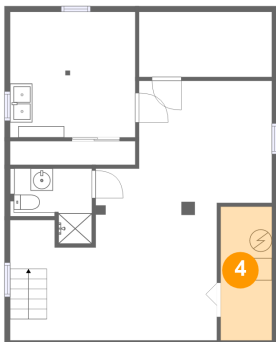
3 Floor 1 - Bath



Max Dimensions: 7'4" x 6'9"
Calculated Area: 39 sq. ft
Included: No

Heated: Yes
Finished: Yes
Enclosed: Yes
Contiguous: No
Permitted: Yes
Wet space: Yes
Addition: No
Conversion: No

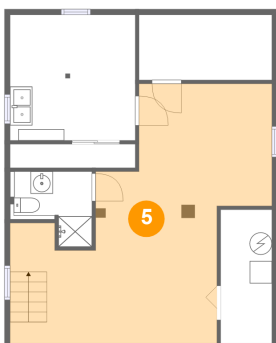
4 Floor 1 - Utility



Max Dimensions: 4'7" x 12'0"
Calculated Area: 55 sq. ft
Included: No

Heated: Yes
Finished: No
Enclosed: Yes
Contiguous: Yes
Permitted: Yes
Wet space: No
Addition: No
Conversion: No

5 Floor 1 - Basement



Max Dimensions: 18'7" x 23'4"
Calculated Area: 352 sq. ft
Included: No

Heated: Yes
Finished: No
Enclosed: Yes
Contiguous: Yes
Permitted: Yes
Wet space: No
Addition: No
Conversion: No

Home report

1907 Canterbury Road Southwest, Raleigh Court, Roanoke,
Roanoke city, Virginia, United States, 24015

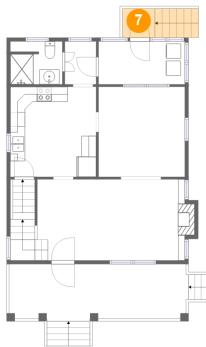
6 Floor 2 - Kitchen



Max Dimensions: 11'7" x 12'2"
Calculated Area: 140 sq. ft
Included: Yes

Heated: Yes
Finished: Yes
Enclosed: Yes
Contiguous: Yes
Permitted: Yes
Wet space: No
Addition: No
Conversion: No

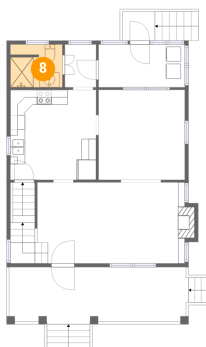
7 Floor 2 - Patio



Max Dimensions: 4'5" x 3'11"
Calculated Area: 40 sq. ft
Included: No

Heated: No
Finished: Yes
Enclosed: No
Contiguous: Yes
Permitted: Yes
Wet space: No
Addition: No
Conversion: No

8 Floor 2 - Bath



Max Dimensions: 7'0" x 5'9"
Calculated Area: 39 sq. ft
Included: Yes

Heated: Yes
Finished: Yes
Enclosed: Yes
Contiguous: Yes
Permitted: Yes
Wet space: Yes
Addition: No
Conversion: No

1907 Canterbury Road Southwest, Raleigh Court, Roanoke,
Roanoke city, Virginia, United States, 24015

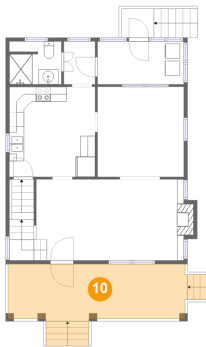
9 Floor 2 - Living Room



Max Dimensions: 19'11" x 10'11"
Calculated Area: 260 sq. ft
Included: Yes

Heated: Yes
Finished: Yes
Enclosed: Yes
Contiguous: Yes
Permitted: Yes
Wet space: No
Addition: No
Conversion: No

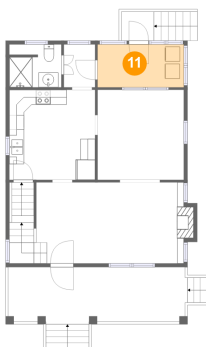
10 Floor 2 - Porch



Max Dimensions: 24'2" x 7'8"
Calculated Area: 207 sq. ft
Included: No

Heated: No
Finished: Yes
Enclosed: No
Contiguous: Yes
Permitted: Yes
Wet space: No
Addition: No
Conversion: No

11 Floor 2 - Laundry

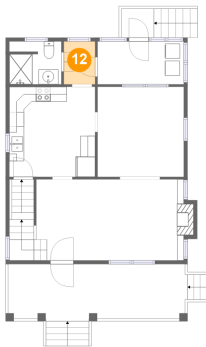


Max Dimensions: 11'7" x 5'9"
Calculated Area: 67 sq. ft
Included: Yes

Heated: Yes
Finished: Yes
Enclosed: Yes
Contiguous: Yes
Permitted: Yes
Wet space: No
Addition: No
Conversion: No

1907 Canterbury Road Southwest, Raleigh Court, Roanoke,
Roanoke city, Virginia, United States, 24015

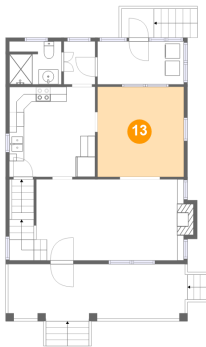
12 Floor 2 - Hall



Max Dimensions: 4'3" x 5'9"
Calculated Area: 24 sq. ft
Included: Yes

Heated: Yes
Finished: Yes
Enclosed: Yes
Contiguous: Yes
Permitted: Yes
Wet space: No
Addition: No
Conversion: No

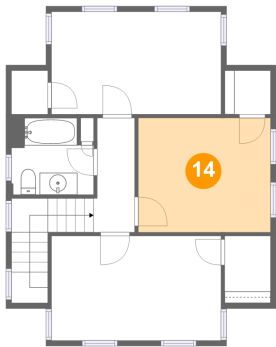
13 Floor 2 - Dining Room



Max Dimensions: 11'8" x 12'2"
Calculated Area: 141 sq. ft
Included: Yes

Heated: Yes
Finished: Yes
Enclosed: Yes
Contiguous: Yes
Permitted: Yes
Wet space: No
Addition: No
Conversion: No

14 Floor 3 - Bedroom

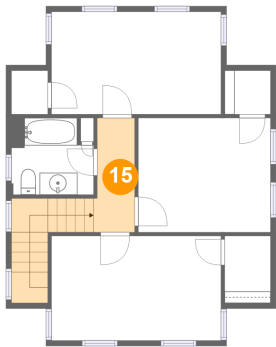


Max Dimensions: 12'0" x 10'4"
Calculated Area: 124 sq. ft
Included: Yes

Heated: Yes
Finished: Yes
Enclosed: Yes
Contiguous: Yes
Permitted: Yes
Wet space: No
Addition: No
Conversion: No

1907 Canterbury Road Southwest, Raleigh Court, Roanoke,
Roanoke city, Virginia, United States, 24015

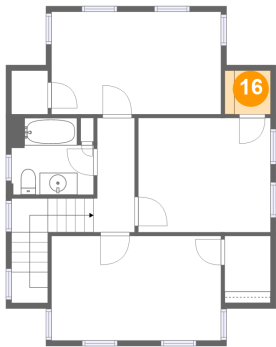
15 Floor 3 - Hall



Max Dimensions: 3'9" x 10'4"
Calculated Area: 80 sq. ft
Included: Yes

Heated: Yes
Finished: Yes
Enclosed: Yes
Contiguous: Yes
Permitted: Yes
Wet space: No
Addition: No
Conversion: No

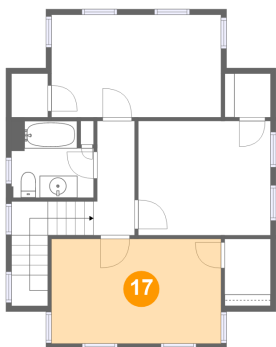
16 Floor 3 - W.I.C.



Max Dimensions: 4'2" x 4'0"
Calculated Area: 17 sq. ft
Included: Yes

Heated: Yes
Finished: Yes
Enclosed: Yes
Contiguous: Yes
Permitted: Yes
Wet space: No
Addition: No
Conversion: No

17 Floor 3 - Bedroom

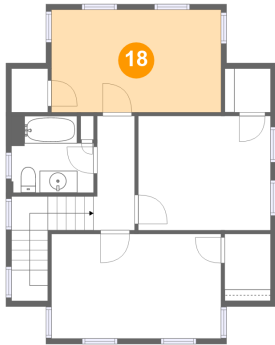


Max Dimensions: 15'5" x 9'6"
Calculated Area: 146 sq. ft
Included: Yes

Heated: Yes
Finished: Yes
Enclosed: Yes
Contiguous: Yes
Permitted: Yes
Wet space: No
Addition: No
Conversion: No

1907 Canterbury Road Southwest, Raleigh Court, Roanoke,
Roanoke city, Virginia, United States, 24015

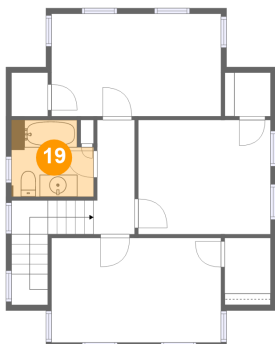
18 Floor 3 - Bedroom



Max Dimensions: 15'4" x 9'3"
Calculated Area: 143 sq. ft
Included: Yes

Heated: Yes
Finished: Yes
Enclosed: Yes
Contiguous: Yes
Permitted: Yes
Wet space: No
Addition: No
Conversion: No

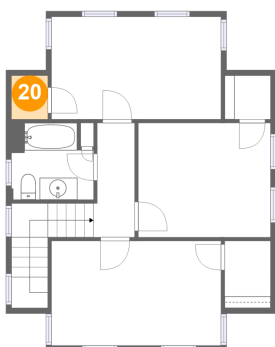
19 Floor 3 - Bath



Max Dimensions: 7'5" x 6'11"
Calculated Area: 48 sq. ft
Included: Yes

Heated: Yes
Finished: Yes
Enclosed: Yes
Contiguous: Yes
Permitted: Yes
Wet space: Yes
Addition: No
Conversion: No

20 Floor 3 - W.I.C.

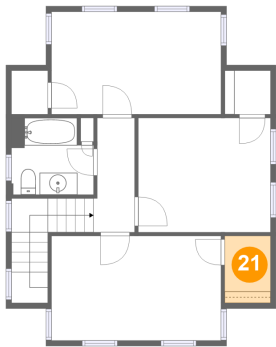


Max Dimensions: 3'4" x 3'11"
Calculated Area: 13 sq. ft
Included: Yes

Heated: Yes
Finished: Yes
Enclosed: Yes
Contiguous: Yes
Permitted: Yes
Wet space: No
Addition: No
Conversion: No

1907 Canterbury Road Southwest, Raleigh Court, Roanoke,
Roanoke city, Virginia, United States, 24015

21 Floor 3 - W.I.C.



Max Dimensions: 4'2" x 6'1"
Calculated Area: 25 sq. ft
Included: Yes

Heated: Yes
Finished: Yes
Enclosed: Yes
Contiguous: Yes
Permitted: Yes
Wet space: No
Addition: No
Conversion: No