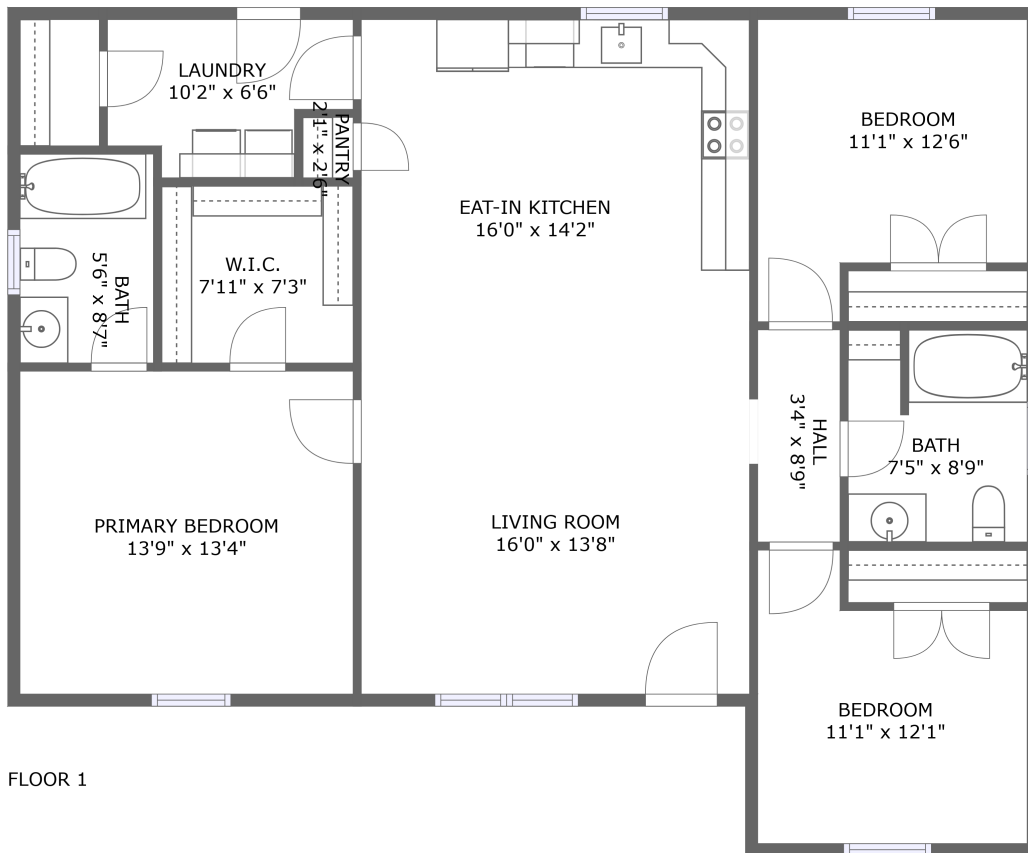



3800 Deerwood Ln, Hopewell, VA, US



Property summary

 **0** Garages

 **3** Bedrooms

 **2** Bathrooms

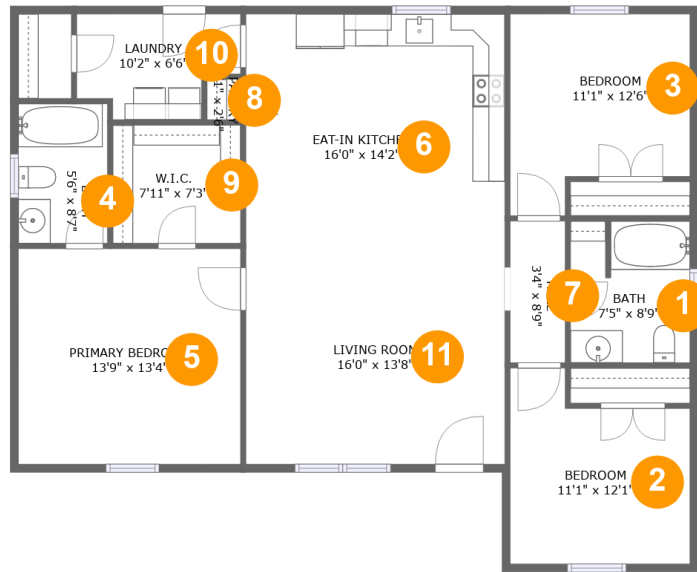
 **0** Half baths

 **1** Floors

 **1,301** Gross living area sqft

 **1,301** Total sqft

3800 Deerwood Ln, Hopewell, VA, US



Room dimensions

Floor 1

Total sqft: 1301

Living area: 1301

#		Dimensions	sqft	Counted as living area
1	Bath	7'5" x 8'9"	63 sq. ft	Yes
2	Bedroom	11'1" x 12'1"	115 sq. ft	Yes
3	Bedroom	11'1" x 12'6"	120 sq. ft	Yes
4	Bath	5'6" x 8'7"	47 sq. ft	Yes
5	Primary Bedroom	13'9" x 13'4"	183 sq. ft	Yes
6	Eat-in Kitchen	16'0" x 14'2"	227 sq. ft	Yes
7	Hall	3'4" x 8'9"	30 sq. ft	Yes
8	Pantry	2'1" x 2'6"	5 sq. ft	Yes
9	W.I.C.	7'11" x 7'3"	58 sq. ft	Yes
10	Laundry	10'2" x 6'6"	56 sq. ft	Yes
11	Living Room	16'0" x 13'8"	219 sq. ft	Yes

3800 Deerwood Ln, Hopewell, VA, US

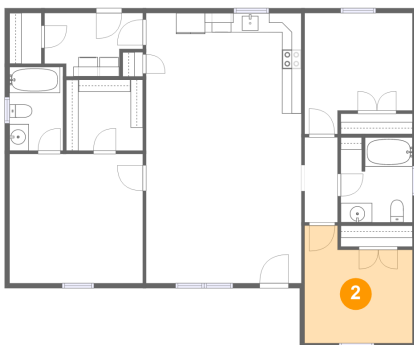
1 Floor 1 - Bath



Dimensions: 7'5" x 8'9"
Area: 63 sq. ft
Counted as living area: Yes

Heated: Yes
Finished: Yes
Enclosed: Yes
Contiguous: Yes
Permitted: Yes
Wet space: Yes
Addition: No
Conversion: No

2 Floor 1 - Bedroom

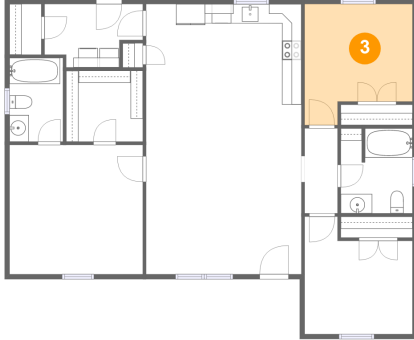


Dimensions: 11'1" x 12'1"
Area: 115 sq. ft
Counted as living area: Yes

Heated: Yes
Finished: Yes
Enclosed: Yes
Contiguous: Yes
Permitted: Yes
Wet space: No
Addition: No
Conversion: No

3800 Deerwood Ln, Hopewell, VA, US

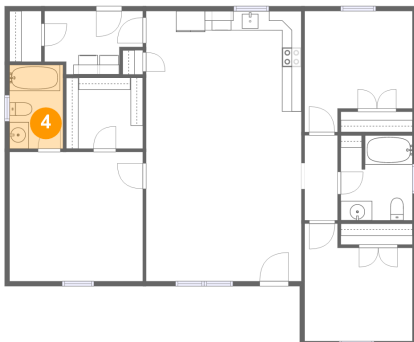
3 Floor 1 - Bedroom



Dimensions: 11'1" x 12'6"
Area: 120 sq. ft
Counted as living area: Yes

Heated: Yes
Finished: Yes
Enclosed: Yes
Contiguous: Yes
Permitted: Yes
Wet space: No
Addition: No
Conversion: No

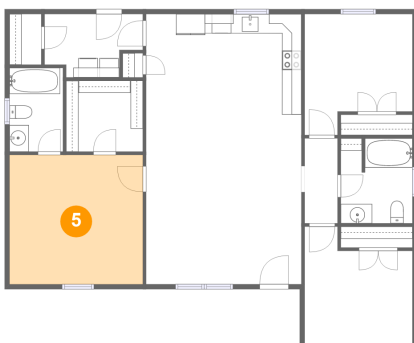
4 Floor 1 - Bath



Dimensions: 5'6" x 8'7"
Area: 47 sq. ft
Counted as living area: Yes

Heated: Yes
Finished: Yes
Enclosed: Yes
Contiguous: Yes
Permitted: Yes
Wet space: Yes
Addition: No
Conversion: No

5 Floor 1 - Primary Bedroom

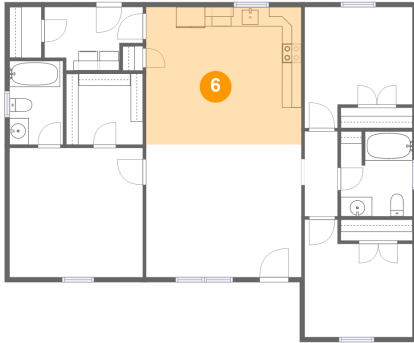


Dimensions: 13'9" x 13'4"
Area: 183 sq. ft
Counted as living area: Yes

Heated: Yes
Finished: Yes
Enclosed: Yes
Contiguous: Yes
Permitted: Yes
Wet space: No
Addition: No
Conversion: No

3800 Deerwood Ln, Hopewell, VA, US

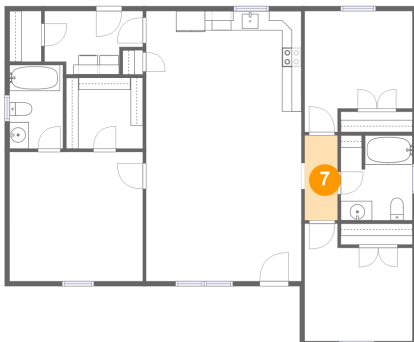
6 Floor 1 - Eat-in Kitchen



Dimensions: 16'0" x 14'2"
Area: 227 sq. ft
Counted as living area: Yes

Heated: Yes
Finished: Yes
Enclosed: Yes
Contiguous: Yes
Permitted: Yes
Wet space: No
Addition: No
Conversion: No

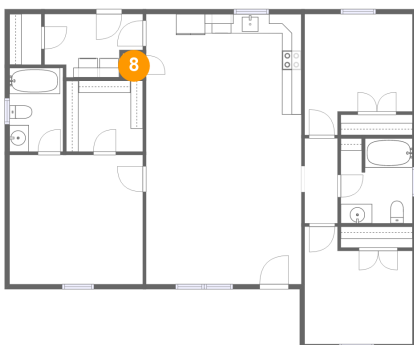
7 Floor 1 - Hall



Dimensions: 3'4" x 8'9"
Area: 30 sq. ft
Counted as living area: Yes

Heated: Yes
Finished: Yes
Enclosed: Yes
Contiguous: Yes
Permitted: Yes
Wet space: No
Addition: No
Conversion: No

8 Floor 1 - Pantry

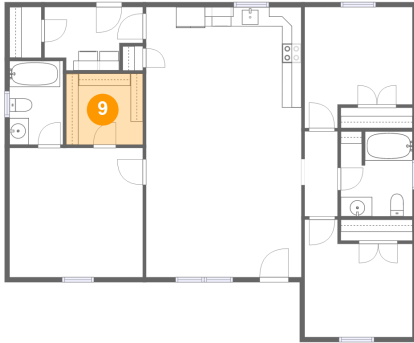


Dimensions: 2'1" x 2'6"
Area: 5 sq. ft
Counted as living area: Yes

Heated: Yes
Finished: Yes
Enclosed: Yes
Contiguous: Yes
Permitted: Yes
Wet space: No
Addition: No
Conversion: No

3800 Deerwood Ln, Hopewell, VA, US

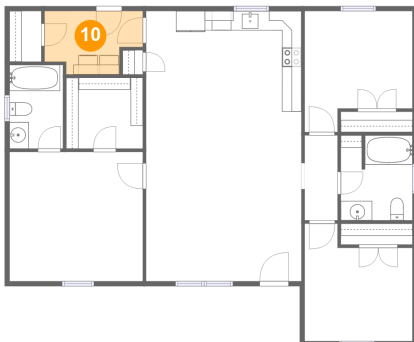
9 Floor 1 - W.I.C.



Dimensions: 7'11" x 7'3"
Area: 58 sq. ft
Counted as living area: Yes

Heated: Yes
Finished: Yes
Enclosed: Yes
Contiguous: Yes
Permitted: Yes
Wet space: No
Addition: No
Conversion: No

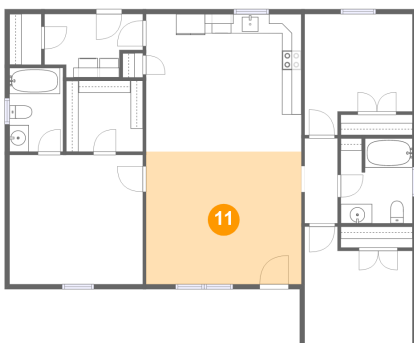
10 Floor 1 - Laundry



Dimensions: 10'2" x 6'6"
Area: 56 sq. ft
Counted as living area: Yes

Heated: Yes
Finished: Yes
Enclosed: Yes
Contiguous: Yes
Permitted: Yes
Wet space: No
Addition: No
Conversion: No

11 Floor 1 - Living Room



Dimensions: 16'0" x 13'8"
Area: 219 sq. ft
Counted as living area: Yes

Heated: Yes
Finished: Yes
Enclosed: Yes
Contiguous: Yes
Permitted: Yes
Wet space: No
Addition: No
Conversion: No