


145 5th Avenue Northeast, Historic Old Northeast, St. Petersburg, Pinellas County,

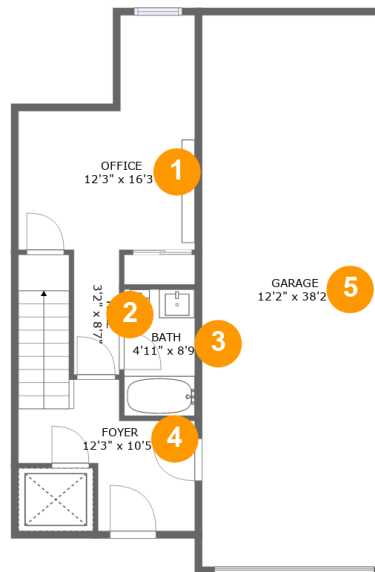


Property Summary

 **1** garages  **2** bedrooms  **3** bathrooms  **1** half baths

 **4** floors  **2,392** Gross Living Area sqft  **2,965** total sqft

145 5th Avenue Northeast, Historic Old Northeast, St. Petersburg, Pinellas County,



Room Dimensions

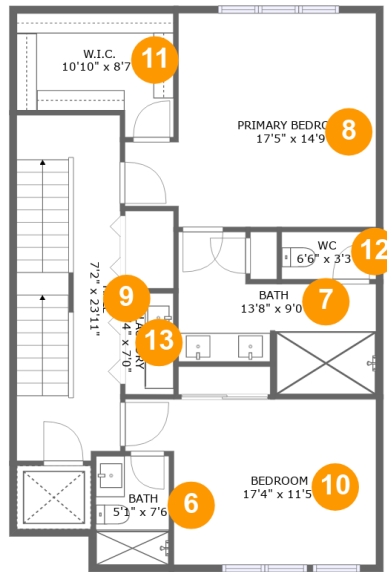
Floor 1

Total sqft: 918

Living area: 431

#	Room name	Dimensions	Area (sqft)	Counted as Living Area
1	Office	12'3" x 16'3"	152 sq. ft	Yes
2	Hall	3'2" x 8'7"	27 sq. ft	Yes
3	Bath	4'11" x 8'9"	43 sq. ft	Yes
4	Foyer	12'3" x 10'5"	118 sq. ft	Yes
5	Garage	12'2" x 38'2"	464 sq. ft	No

145 5th Avenue Northeast, Historic Old Northeast, St. Petersburg, Pinellas County,



Room Dimensions

Floor 2

Total sqft: 980

Living area: 980

#	Room name	Dimensions	Area (sqft)	Counted as Living Area
6	Bath	5'1" x 7'6"	38 sq. ft	Yes
7	Bath	13'8" x 9'0"	105 sq. ft	Yes
8	Primary Bedroom	17'5" x 14'9"	219 sq. ft	Yes
9	Hall	7'2" x 23'11"	170 sq. ft	Yes
10	Bedroom	17'4" x 11'5"	172 sq. ft	Yes
11	W.i.c.	10'10" x 8'7"	79 sq. ft	Yes
12	Wc	6'6" x 3'3"	21 sq. ft	Yes
13	Laundry	3'4" x 7'0"	23 sq. ft	Yes

145 5th Avenue Northeast, Historic Old Northeast, St. Petersburg, Pinellas County,



Room Dimensions

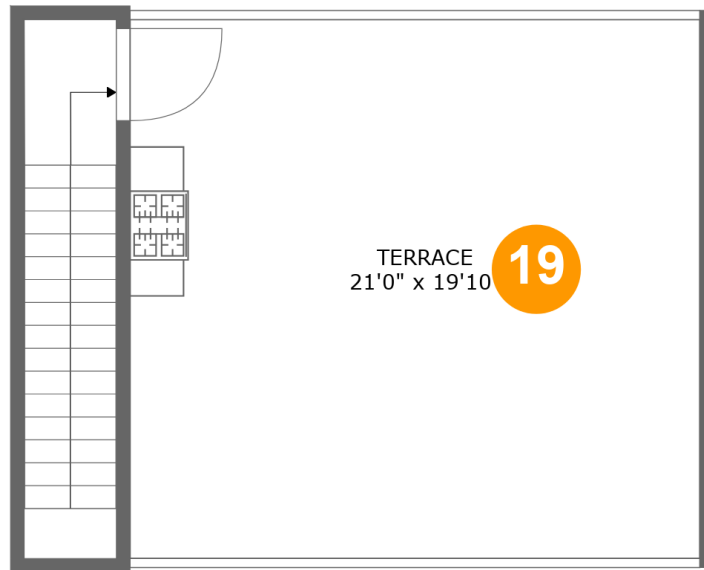
Floor 3

Total sqft: 981

Living area: 981

#	Room name	Dimensions	Area (sqft)	Counted as Living Area
14	Living Room	24'10" x 15'6"	346 sq. ft	Yes
15	Kitchen	24'10" x 11'9"	291 sq. ft	Yes
16	Wc	5'6" x 7'0"	39 sq. ft	Yes
17	Dining Area	15'6" x 10'11"	169 sq. ft	Yes
18	Hall	9'4" x 3'5"	33 sq. ft	Yes

145 5th Avenue Northeast, Historic Old Northeast, St. Petersburg, Pinellas County,



Room Dimensions

Floor 4

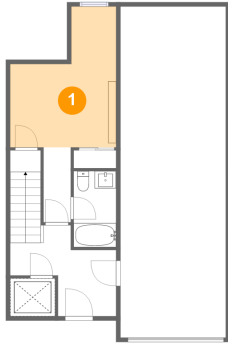
Total sqft: 86

Living area: 0

#	Room name	Dimensions	Area (sqft)	Counted as Living Area
19	Terrace	21'0" x 19'10"	416 sq. ft	No

145 5th Avenue Northeast, Historic Old Northeast, St. Petersburg, Pinellas County,

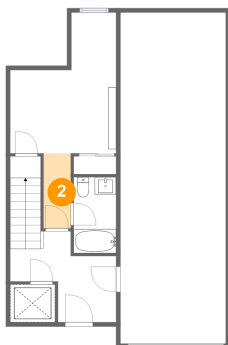
1 Floor 1 - Office



Dimensions: 12'3" x 16'3"
Area: 152 sq. ft
Counted as Living Area:
Yes

Heated: Yes
Finished: Yes
Enclosed: Yes
Contiguous:
Yes
Permitted: Yes
Wet Space: No
Addition: No
Conversion: No

2 Floor 1 - Hall

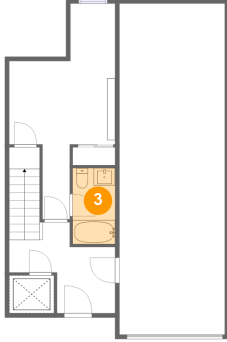


Dimensions: 3'2" x 8'7"
Area: 27 sq. ft
Counted as Living Area:
Yes

Heated: Yes
Finished: Yes
Enclosed: Yes
Contiguous:
Yes
Permitted: Yes
Wet Space: No
Addition: No
Conversion: No

145 5th Avenue Northeast, Historic Old Northeast, St. Petersburg, Pinellas County,

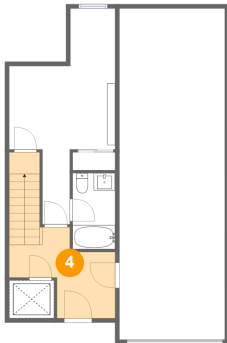
3 Floor 1 - Bath



Dimensions: 4'11" x 8'9"
Area: 43 sq. ft
Counted as Living Area:
Yes

Heated: Yes
Finished: Yes
Enclosed: Yes
Contiguous:
Yes
Permitted: Yes
Wet Space: Yes
Addition: No
Conversion: No

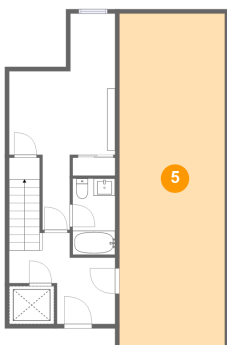
4 Floor 1 - Foyer



Dimensions: 12'3" x 10'5"
Area: 118 sq. ft
Counted as Living Area:
Yes

Heated: Yes
Finished: Yes
Enclosed: Yes
Contiguous:
Yes
Permitted: Yes
Wet Space: No
Addition: No
Conversion: No

5 Floor 1 - Garage

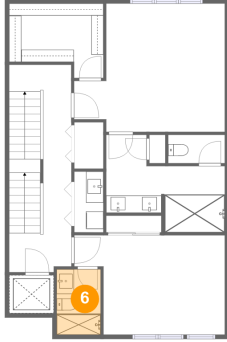


Dimensions: 12'2" x 38'2"
Area: 464 sq. ft
Counted as Living Area: No

Heated: No
Finished: No
Enclosed: Yes
Contiguous: Yes
Permitted: Yes
Wet Space: No
Addition: No
Conversion: No

145 5th Avenue Northeast, Historic Old Northeast, St. Petersburg, Pinellas County,

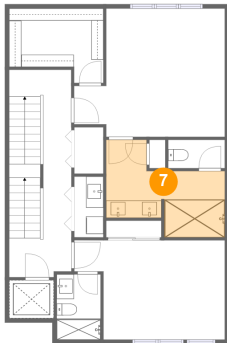
6 Floor 2 - Bath



Dimensions: 5'1" x 7'6"
Area: 38 sq. ft
Counted as Living Area:
Yes

Heated: Yes
Finished: Yes
Enclosed: Yes
Contiguous:
Yes
Permitted: Yes
Wet Space: Yes
Addition: No
Conversion: No

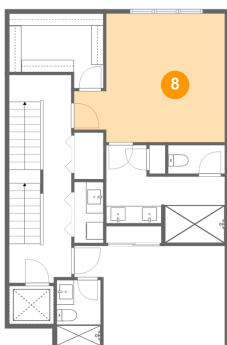
7 Floor 2 - Bath



Dimensions: 13'8" x 9'0"
Area: 105 sq. ft
Counted as Living Area:
Yes

Heated: Yes
Finished: Yes
Enclosed: Yes
Contiguous:
Yes
Permitted: Yes
Wet Space: Yes
Addition: No
Conversion: No

8 Floor 2 - Primary Bedroom

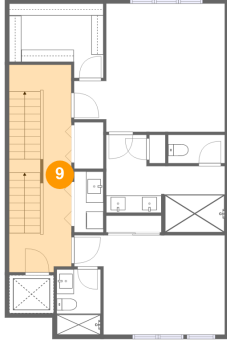


Dimensions: 17'5" x 14'9"
Area: 219 sq. ft
Counted as Living Area:
Yes

Heated: Yes
Finished: Yes
Enclosed: Yes
Contiguous:
Yes
Permitted: Yes
Wet Space: No
Addition: No
Conversion: No

145 5th Avenue Northeast, Historic Old Northeast, St. Petersburg, Pinellas County,

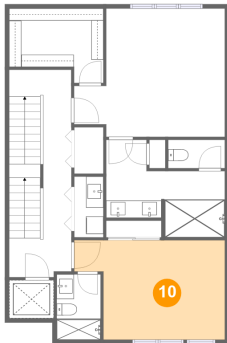
9 Floor 2 - Hall



Dimensions: 7'2" x 23'11"
Area: 170 sq. ft
Counted as Living Area:
Yes

Heated: Yes
Finished: Yes
Enclosed: Yes
Contiguous:
Yes
Permitted: Yes
Wet Space: No
Addition: No
Conversion: No

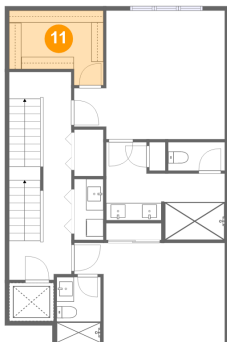
10 Floor 2 - Bedroom



Dimensions: 17'4" x 11'5"
Area: 172 sq. ft
Counted as Living Area:
Yes

Heated: Yes
Finished: Yes
Enclosed: Yes
Contiguous:
Yes
Permitted: Yes
Wet Space: No
Addition: No
Conversion: No

11 Floor 2 - W.i.c.

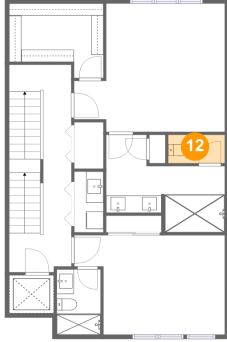


Dimensions: 10'10" x 8'7"
Area: 79 sq. ft
Counted as Living Area:
Yes

Heated: Yes
Finished: Yes
Enclosed: Yes
Contiguous:
Yes
Permitted: Yes
Wet Space: No
Addition: No
Conversion: No

145 5th Avenue Northeast, Historic Old Northeast, St. Petersburg, Pinellas County,

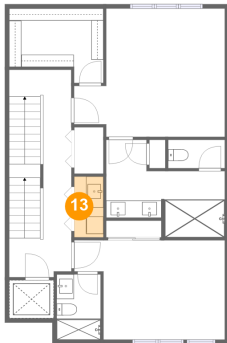
12 Floor 2 - Wc



Dimensions: 6'6" x 3'3"
Area: 21 sq. ft
Counted as Living Area:
Yes

Heated: Yes
Finished: Yes
Enclosed: Yes
Contiguous:
Yes
Permitted: Yes
Wet Space: Yes
Addition: No
Conversion: No

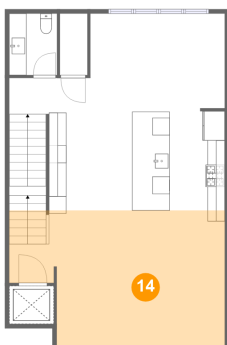
13 Floor 2 - Laundry



Dimensions: 3'4" x 7'0"
Area: 23 sq. ft
Counted as Living Area:
Yes

Heated: Yes
Finished: Yes
Enclosed: Yes
Contiguous:
Yes
Permitted: Yes
Wet Space: No
Addition: No
Conversion: No

14 Floor 3 - Living Room

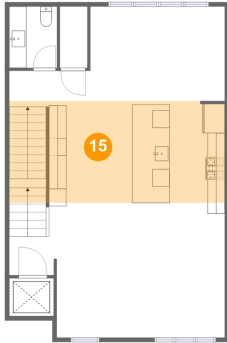


Dimensions: 24'10" x 15'6"
Area: 346 sq. ft
Counted as Living Area:
Yes

Heated: Yes
Finished: Yes
Enclosed: Yes
Contiguous:
Yes
Permitted: Yes
Wet Space: No
Addition: No
Conversion: No

145 5th Avenue Northeast, Historic Old Northeast, St. Petersburg, Pinellas County,

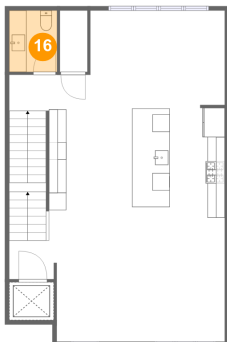
15 Floor 3 - Kitchen



Dimensions: 24'10" x 11'9"
Area: 291 sq. ft
Counted as Living Area:
Yes

Heated: Yes
Finished: Yes
Enclosed: Yes
Contiguous:
Yes
Permitted: Yes
Wet Space: No
Addition: No
Conversion: No

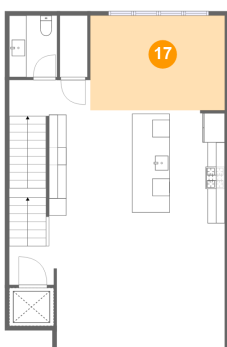
16 Floor 3 - Wc



Dimensions: 5'6" x 7'0"
Area: 39 sq. ft
Counted as Living Area:
Yes

Heated: Yes
Finished: Yes
Enclosed: Yes
Contiguous:
Yes
Permitted: Yes
Wet Space: Yes
Addition: No
Conversion: No

17 Floor 3 - Dining Area

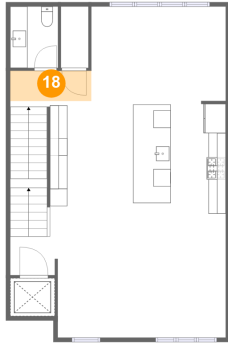


Dimensions: 15'6" x 10'11"
Area: 169 sq. ft
Counted as Living Area:
Yes

Heated: Yes
Finished: Yes
Enclosed: Yes
Contiguous:
Yes
Permitted: Yes
Wet Space: No
Addition: No
Conversion: No

145 5th Avenue Northeast, Historic Old Northeast, St. Petersburg, Pinellas County,

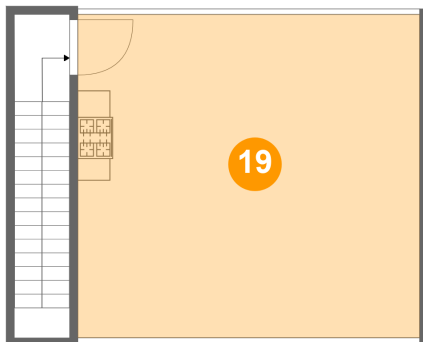
18 Floor 3 - Hall



Dimensions: 9'4" x 3'5"
Area: 33 sq. ft
Counted as Living Area:
Yes

Heated: Yes
Finished: Yes
Enclosed: Yes
Contiguous:
Yes
Permitted: Yes
Wet Space: No
Addition: No
Conversion: No

19 Floor 4 - Terrace



Dimensions: 21'0" x 19'10"
Area: 416 sq. ft
Counted as Living Area: No

Heated: No
Finished: No
Enclosed: No
Contiguous: Yes
Permitted: No
Wet Space: No
Addition: No
Conversion: No