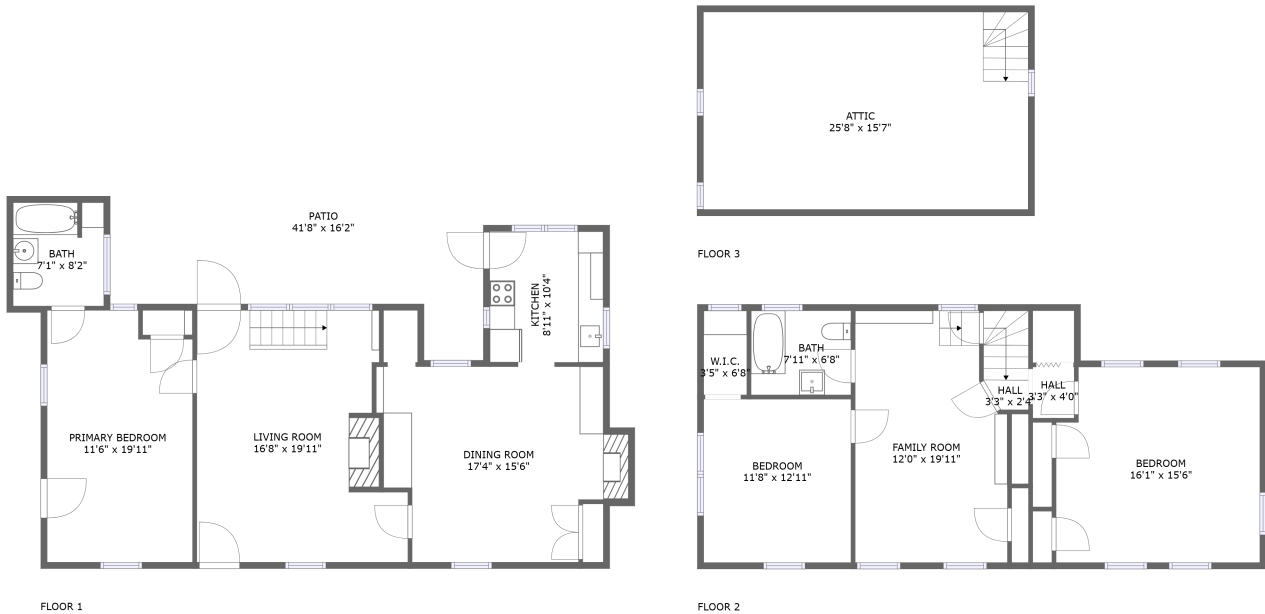


204 Washington St. West ,Shepherdstown ,WV,US

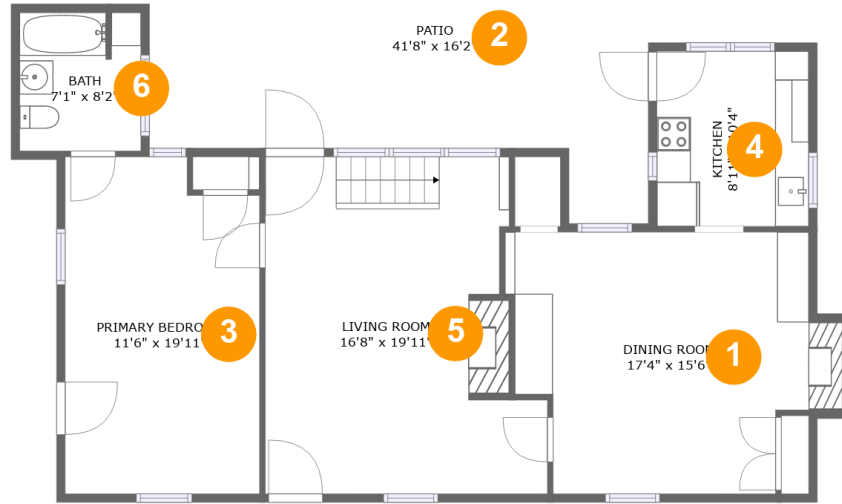


Property Summary

0 garages **3** bedrooms **2** bathrooms **0** half baths

3 floors **1,928** Gross Living Area sqft **2,813** total sqft

204 Washington St.
West ,Shepherdstown ,WV,US



Room Dimensions

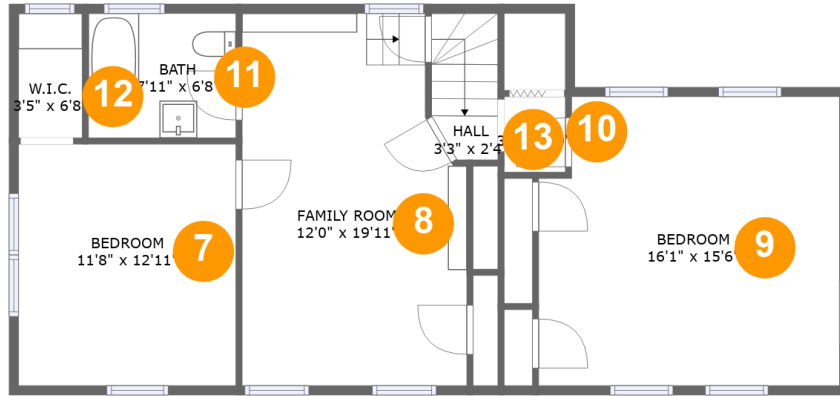
Floor 1

Total sqft: 1495

Living area: 1053

#	Room name	Dimensions	Area (sqft)	Counted as Living Area
1	Dining Room	17'4" x 15'6"	258 sq. ft	Yes
2	Patio	41'8" x 16'2"	430 sq. ft	No
3	Primary Bedroom	11'6" x 19'11"	219 sq. ft	Yes
4	Kitchen	8'11" x 10'4"	93 sq. ft	Yes
5	Living Room	16'8" x 19'11"	296 sq. ft	Yes
6	Bath	7'1" x 8'2"	58 sq. ft	Yes

204 Washington St. West ,Shepherdstown ,WV,US



Room Dimensions

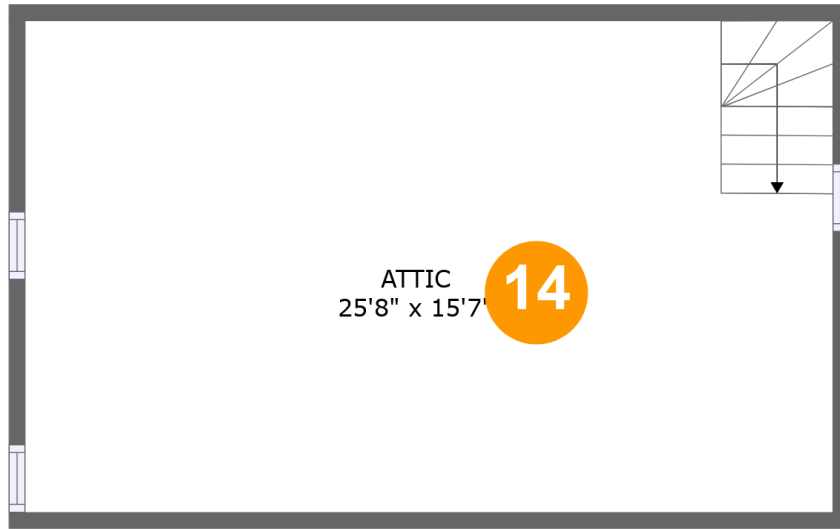
Floor 2

Total sqft: 875

Living area: 875

#	Room name	Dimensions	Area (sqft)	Counted as Living Area
7	Bedroom	11'8" x 12'11"	150 sq. ft	Yes
8	Family Room	12'0" x 19'11"	223 sq. ft	Yes
9	Bedroom	16'1" x 15'6"	241 sq. ft	Yes
10	Hall	3'3" x 4'0"	13 sq. ft	Yes
11	Bath	7'11" x 6'8"	53 sq. ft	Yes
12	W.i.c.	3'5" x 6'8"	23 sq. ft	Yes
13	Hall	3'3" x 2'4"	26 sq. ft	Yes

204 Washington St.
West ,Shepherdstown ,WV,US



Room Dimensions

Floor 3

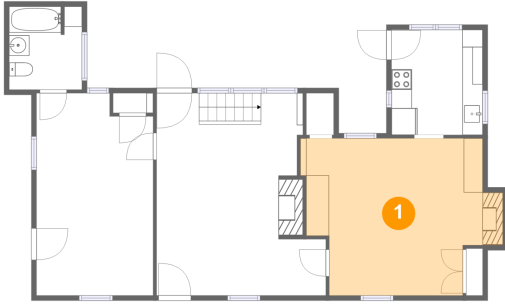
Total sqft: 443

Living area: 0

#	Room name	Dimensions	Area (sqft)	Counted as Living Area
14	Attic	25'8" x 15'7"	323 sq. ft	No

204 Washington St. West ,Shepherdstown ,WV,US

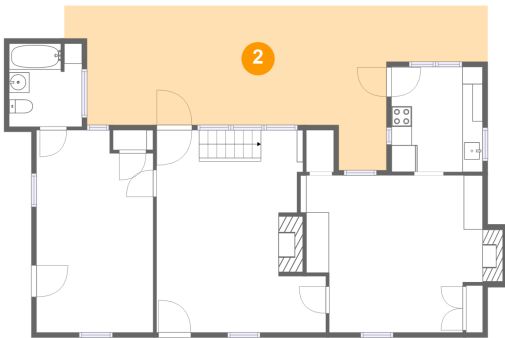
1 Floor 1 - Dining Room



Dimensions: 17'4" x 15'6"
Area: 258 sq. ft
Counted as Living Area:
Yes

Heated: Yes
Finished: Yes
Enclosed: Yes
Contiguous:
Yes
Permitted: Yes
Wet Space: No
Addition: No
Conversion: No

2 Floor 1 - Patio

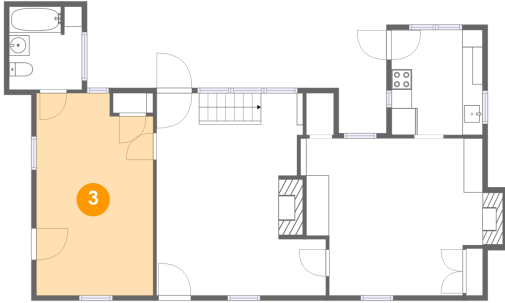


Dimensions: 41'8" x 16'2"
Area: 430 sq. ft
Counted as Living Area: No

Heated: No
Finished: Yes
Enclosed: No
Contiguous: Yes
Permitted: Yes
Wet Space: No
Addition: No
Conversion: No

204 Washington St. West ,Shepherdstown ,WV,US

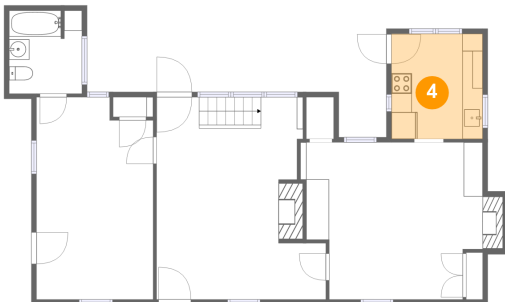
3 Floor 1 - Primary Bedroom



Dimensions: 11'6" x 19'11"
Area: 219 sq. ft
Counted as Living Area:
Yes

Heated: Yes
Finished: Yes
Enclosed: Yes
Contiguous:
Yes
Permitted: Yes
Wet Space: No
Addition: No
Conversion: No

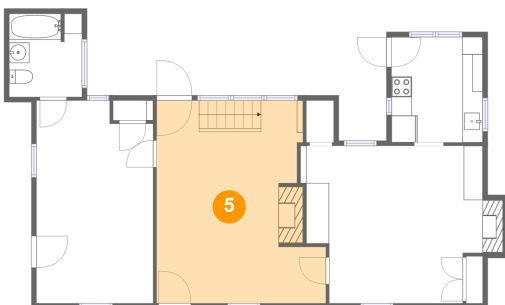
4 Floor 1 - Kitchen



Dimensions: 8'11" x 10'4"
Area: 93 sq. ft
Counted as Living Area:
Yes

Heated: Yes
Finished: Yes
Enclosed: Yes
Contiguous:
Yes
Permitted: Yes
Wet Space: No
Addition: No
Conversion: No

5 Floor 1 - Living Room

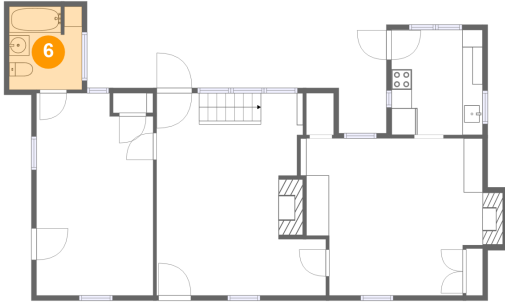


Dimensions: 16'8" x 19'11"
Area: 296 sq. ft
Counted as Living Area:
Yes

Heated: Yes
Finished: Yes
Enclosed: Yes
Contiguous:
Yes
Permitted: Yes
Wet Space: No
Addition: No
Conversion: No

**204 Washington St.
West ,Shepherdstown ,WV,US**

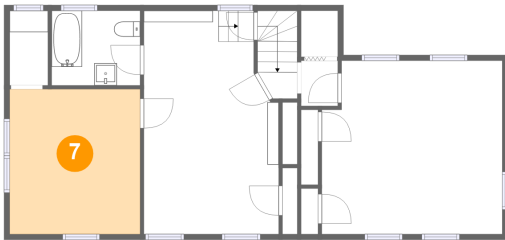
6 Floor 1 - Bath



Dimensions: 7'1" x 8'2"
Area: 58 sq. ft
Counted as Living Area:
Yes

Heated: Yes
Finished: Yes
Enclosed: Yes
Contiguous:
Yes
Permitted: Yes
Wet Space: Yes
Addition: No
Conversion: No

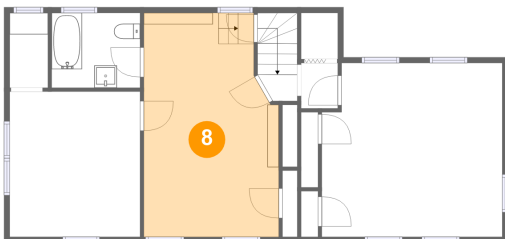
7 Floor 2 - Bedroom



Dimensions: 11'8" x 12'11"
Area: 150 sq. ft
Counted as Living Area:
Yes

Heated: Yes
Finished: Yes
Enclosed: Yes
Contiguous:
Yes
Permitted: Yes
Wet Space: No
Addition: No
Conversion: No

8 Floor 2 - Family Room

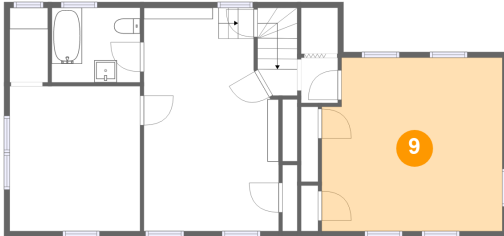


Dimensions: 12'0" x 19'11"
Area: 223 sq. ft
Counted as Living Area:
Yes

Heated: Yes
Finished: Yes
Enclosed: Yes
Contiguous:
Yes
Permitted: Yes
Wet Space: No
Addition: No
Conversion: No

204 Washington St.
West ,Shepherdstown ,WV,US

9 Floor 2 - Bedroom



Dimensions: 16'1" x 15'6"
Area: 241 sq. ft
Counted as Living Area:
Yes

Heated: Yes
Finished: Yes
Enclosed: Yes
Contiguous:
Yes
Permitted: Yes
Wet Space: No
Addition: No
Conversion: No

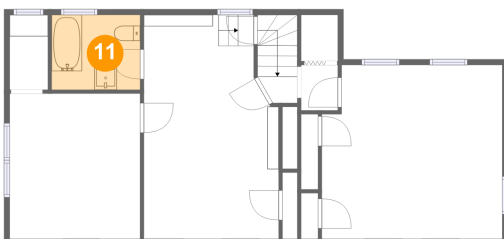
10 Floor 2 - Hall



Dimensions: 3'3" x 4'0"
Area: 13 sq. ft
Counted as Living Area:
Yes

Heated: Yes
Finished: Yes
Enclosed: Yes
Contiguous:
Yes
Permitted: Yes
Wet Space: No
Addition: No
Conversion: No

11 Floor 2 - Bath

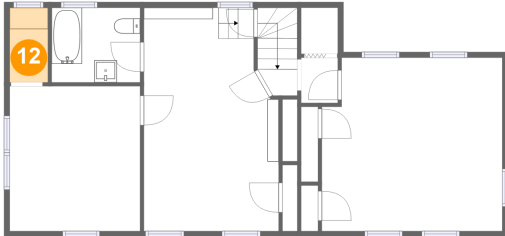


Dimensions: 7'11" x 6'8"
Area: 53 sq. ft
Counted as Living Area:
Yes

Heated: Yes
Finished: Yes
Enclosed: Yes
Contiguous:
Yes
Permitted: Yes
Wet Space: Yes
Addition: No
Conversion: No

**204 Washington St.
West ,Shepherdstown ,WV,US**

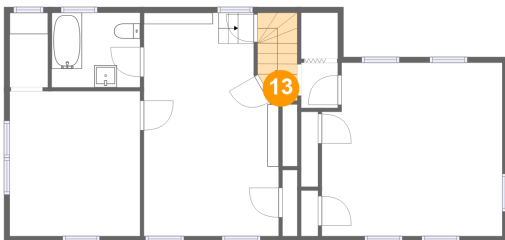
12 Floor 2 - W.i.c.



Dimensions: 3'5" x 6'8"
Area: 23 sq. ft
Counted as Living Area:
Yes

Heated: Yes
Finished: Yes
Enclosed: Yes
Contiguous:
Yes
Permitted: Yes
Wet Space: No
Addition: No
Conversion: No

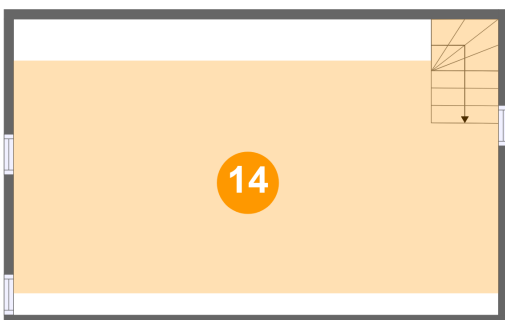
13 Floor 2 - Hall



Dimensions: 3'3" x 2'4"
Area: 26 sq. ft
Counted as Living Area:
Yes

Heated: Yes
Finished: Yes
Enclosed: Yes
Contiguous:
Yes
Permitted: Yes
Wet Space: No
Addition: No
Conversion: No

14 Floor 3 - Attic



Dimensions: 25'8" x 15'7"
Area: 323 sq. ft
Counted as Living Area: No

Heated: No
Finished: No
Enclosed: Yes
Contiguous: Yes
Permitted: Yes
Wet Space: No
Addition: No
Conversion: No