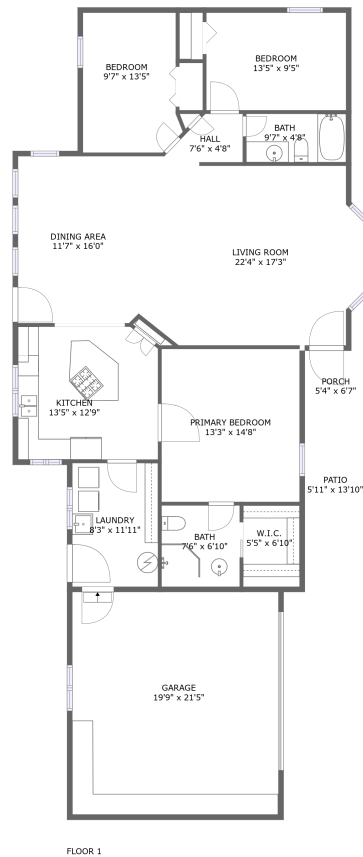



146 Blue Jay Lane, Grants Pass, Oregon 97527, United States



Property summary

 **1** Garages

 **3** Bedrooms

 **2** Bathrooms

 **0** Half baths

 **1** Floors

 **1,590**
Gross living
area sqft

 **2,162**
Total sqft

146 Blue Jay Lane, Grants Pass, Oregon 97527, United States



Room dimensions

Floor 1

Total sqft: 2162 Living area: 1590

#		Dimensions	sqft	Counted as living area
1	Primary Bedroom	13'3" x 14'8"	195 sq. ft	Yes
2	Patio	5'11" x 13'10"	82 sq. ft	No
3	Bath	7'6" x 6'10"	59 sq. ft	Yes
4	Garage	19'9" x 21'5"	423 sq. ft	No
5	Kitchen	13'5" x 12'9"	169 sq. ft	Yes
6	Dining Area	11'7" x 16'0"	185 sq. ft	Yes
7	Porch	5'4" x 6'7"	35 sq. ft	No
8	Laundry	8'3" x 11'11"	98 sq. ft	Yes
9	Bath	9'7" x 4'8"	45 sq. ft	Yes
10	Living Room	22'4" x 17'3"	358 sq. ft	Yes
11	W.I.C.	5'5" x 6'10"	42 sq. ft	Yes

**146 Blue Jay Lane, Grants Pass, Oregon 97527,
United States**

#		Dimensions	sqft	Counted as living area
12	Bedroom	13'5" x 9'5"	126 sq. ft	Yes
13	Bedroom	9'7" x 13'5"	120 sq. ft	Yes
14	Hall	7'6" x 4'8"	28 sq. ft	Yes

146 Blue Jay Lane, Grants Pass, Oregon 97527, United States

1 Floor 1 - Primary Bedroom



Dimensions: 13'3" x 14'8"
Area: 195 sq. ft
Counted as living area: Yes

Heated: Yes
Finished: Yes
Enclosed: Yes
Contiguous: Yes
Permitted: Yes
Wet space: No
Addition: No
Conversion: No

2 Floor 1 - Patio



Dimensions: 5'11" x 13'10"
Area: 82 sq. ft
Counted as living area: No

Heated: No
Finished: Yes
Enclosed: No
Contiguous: Yes
Permitted: Yes
Wet space: No
Addition: No
Conversion: No

146 Blue Jay Lane, Grants Pass, Oregon 97527, United States

3 Floor 1 - Bath



Dimensions: 7'6" x 6'10"
Area: 59 sq. ft
Counted as living area: Yes

Heated: Yes
Finished: Yes
Enclosed: Yes
Contiguous: Yes
Permitted: Yes
Wet space: Yes
Addition: No
Conversion: No

4 Floor 1 - Garage



Dimensions: 19'9" x 21'5"
Area: 423 sq. ft
Counted as living area: No

Heated: No
Finished: No
Enclosed: Yes
Contiguous: Yes
Permitted: Yes
Wet space: No
Addition: No
Conversion: No

5 Floor 1 - Kitchen



Dimensions: 13'5" x 12'9"
Area: 169 sq. ft
Counted as living area: Yes

Heated: Yes
Finished: Yes
Enclosed: Yes
Contiguous: Yes
Permitted: Yes
Wet space: No
Addition: No
Conversion: No

146 Blue Jay Lane, Grants Pass, Oregon 97527, United States

6 Floor 1 - Dining Area



Dimensions: 11'7" x 16'0"
Area: 185 sq. ft
Counted as living area: Yes

Heated: Yes
Finished: Yes
Enclosed: Yes
Contiguous: Yes
Permitted: Yes
Wet space: No
Addition: No
Conversion: No

7 Floor 1 - Porch



Dimensions: 5'4" x 6'7"
Area: 35 sq. ft
Counted as living area: No

Heated: No
Finished: Yes
Enclosed: No
Contiguous: Yes
Permitted: Yes
Wet space: No
Addition: No
Conversion: No

8 Floor 1 - Laundry



Dimensions: 8'3" x 11'11"
Area: 98 sq. ft
Counted as living area: Yes

Heated: Yes
Finished: Yes
Enclosed: Yes
Contiguous: Yes
Permitted: Yes
Wet space: No
Addition: No
Conversion: No

146 Blue Jay Lane, Grants Pass, Oregon 97527, United States

9 Floor 1 - Bath



Dimensions: 9'7" x 4'8"
Area: 45 sq. ft
Counted as living area: Yes

Heated: Yes
Finished: Yes
Enclosed: Yes
Contiguous: Yes
Permitted: Yes
Wet space: Yes
Addition: No
Conversion: No

10 Floor 1 - Living Room



Dimensions: 22'4" x 17'3"
Area: 358 sq. ft
Counted as living area: Yes

Heated: Yes
Finished: Yes
Enclosed: Yes
Contiguous: Yes
Permitted: Yes
Wet space: No
Addition: No
Conversion: No

11 Floor 1 - W.I.C.



Dimensions: 5'5" x 6'10"
Area: 42 sq. ft
Counted as living area: Yes

Heated: Yes
Finished: Yes
Enclosed: Yes
Contiguous: Yes
Permitted: Yes
Wet space: No
Addition: No
Conversion: No

**146 Blue Jay Lane, Grants Pass, Oregon 97527,
United States**

12 Floor 1 - Bedroom



Dimensions: 13'5" x 9'5"
Area: 126 sq. ft
Counted as living area: Yes

Heated: Yes
Finished: Yes
Enclosed: Yes
Contiguous: Yes
Permitted: Yes
Wet space: No
Addition: No
Conversion: No

13 Floor 1 - Bedroom



Dimensions: 9'7" x 13'5"
Area: 120 sq. ft
Counted as living area: Yes

Heated: Yes
Finished: Yes
Enclosed: Yes
Contiguous: Yes
Permitted: Yes
Wet space: No
Addition: No
Conversion: No

14 Floor 1 - Hall



Dimensions: 7'6" x 4'8"
Area: 28 sq. ft
Counted as living area: Yes

Heated: Yes
Finished: Yes
Enclosed: Yes
Contiguous: Yes
Permitted: Yes
Wet space: No
Addition: No
Conversion: No