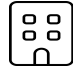




40 Maldives Crescent, Vales of Castlemore, Brampton, Peel County, Ontario, Canada, L6P

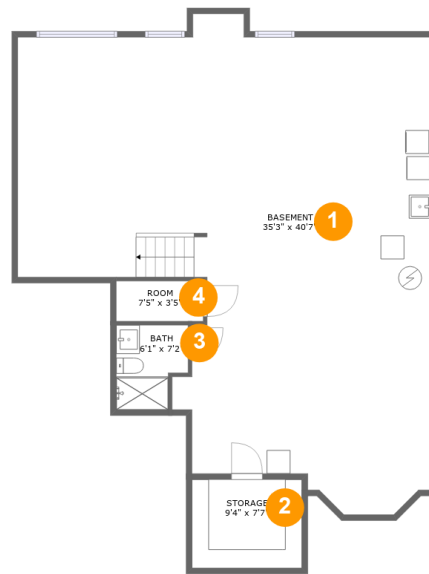


Property Summary

 **1** garages
  **4** bedrooms
  **3** bathrooms
  **1** half baths

 **3** floors
  **3,754** Gross Living Area sqft
  **5,480** total sqft

40 Maldives Crescent, Vales of Castlemore, Brampton, Peel County, Ontario, Canada, L6P



Room Dimensions

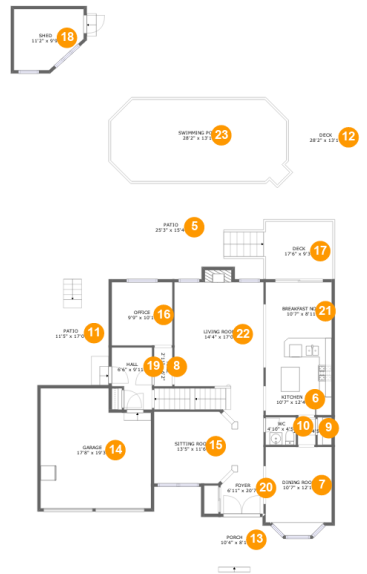
Floor 1

Total sqft: 1332

Living area: 1175

#	Room name	Dimensions	Area (sqft)	Counted as Living Area
1	Basement	35'3" x 40'7"	1098 sq. ft	Yes
2	Storage	9'4" x 7'7"	71 sq. ft	No
3	Bath	6'1" x 7'2"	39 sq. ft	No
4	Room	7'5" x 3'5"	25 sq. ft	No

40 Maldives Crescent, Vales of Castlemore, Brampton, Peel County, Ontario, Canada, L6P



Room Dimensions

Floor 2

Total sqft: 2830

Living area: 1261

#	Room name	Dimensions	Area (sqft)	Counted as Living Area
5	Patio	25'3" x 15'4"	326 sq. ft	No
6	Kitchen	10'7" x 12'4"	131 sq. ft	Yes
7	Dining Room	10'7" x 12'1"	142 sq. ft	Yes
8	Hall	2'11" x 6'2"	18 sq. ft	Yes
9	Hall	2'10" x 4'5"	12 sq. ft	Yes
10	Wc	4'10" x 4'5"	21 sq. ft	Yes
11	Patio	11'5" x 17'0"	194 sq. ft	No
12	Deck	28'2" x 13'1"	723 sq. ft	No
13	Porch	10'4" x 8'1"	83 sq. ft	No
14	Garage	17'8" x 19'3"	315 sq. ft	No
15	Sitting Room	13'5" x 11'6"	149 sq. ft	Yes

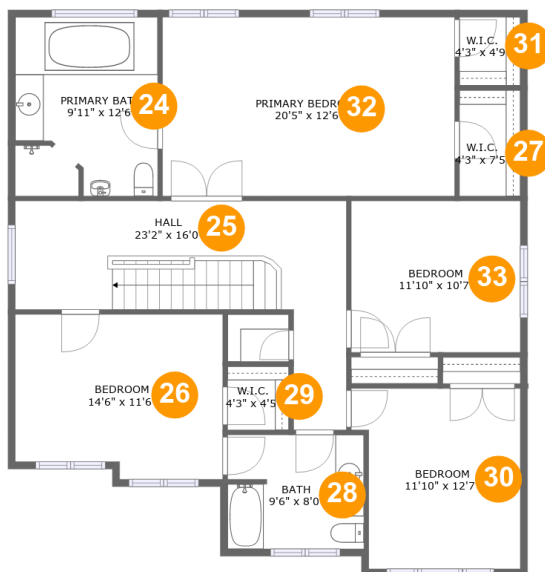
Scan captured on Thu, 03 Oct 2024 17:23:30 GMT

Information is calculated by CubiCasa technology; deemed highly reliable but not guaranteed.

40 Maldives Crescent, Vales of Castlemore, Brampton, Peel County, Ontario, Canada, L6P

#	Room name	Dimensions	Area (sqft)	Counted as Living Area
16	Office	9'9" x 10'1"	98 sq. ft	Yes
17	Deck	17'6" x 9'3"	126 sq. ft	No
18	Shed	11'2" x 9'9"	96 sq. ft	No
19	Hall	6'6" x 9'11"	57 sq. ft	Yes
20	Foyer	6'11" x 20'7"	151 sq. ft	Yes
21	Breakfast Nook	10'7" x 8'11"	95 sq. ft	Yes
22	Living Room	14'4" x 17'0"	249 sq. ft	Yes
23	Swimming Pool	28'2" x 13'1"	352 sq. ft	No

40 Maldives Crescent, Vales of Castlemore, Brampton, Peel County, Ontario, Canada, L6P



Room Dimensions

Floor 3

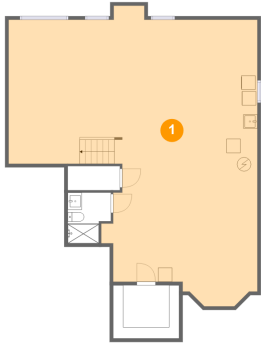
Total sqft: 1318

Living area: 1318

#	Room name	Dimensions	Area (sqft)	Counted as Living Area
24	Primary Bath	9'11" x 12'6"	123 sq. ft	Yes
25	Hall	23'2" x 16'0"	206 sq. ft	Yes
26	Bedroom	14'6" x 11'6"	158 sq. ft	Yes
27	W.i.c.	4'3" x 7'5"	31 sq. ft	Yes
28	Bath	9'6" x 8'0"	75 sq. ft	Yes
29	W.i.c.	4'3" x 4'5"	19 sq. ft	Yes
30	Bedroom	11'10" x 12'7"	137 sq. ft	Yes
31	W.i.c.	4'3" x 4'9"	20 sq. ft	Yes
32	Primary Bedroom	20'5" x 12'6"	255 sq. ft	Yes
33	Bedroom	11'10" x 10'7"	125 sq. ft	Yes

40 Maldives Crescent, Vales of Castlemore, Brampton, Peel County, Ontario, Canada, L6P

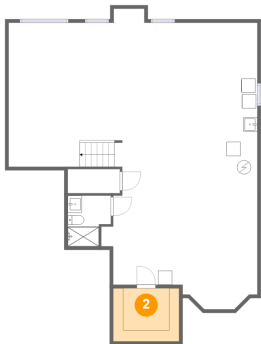
1 Floor 1 - Basement



Dimensions: 35'3" x 40'7"
Area: 1098 sq. ft
Counted as Living Area:
Yes

Heated: Yes
Finished: Yes
Enclosed: Yes
Contiguous:
Yes
Permitted: Yes
Wet Space: No
Addition: No
Conversion: No

2 Floor 1 - Storage

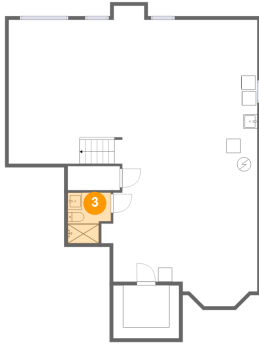


Dimensions: 9'4" x 7'7"
Area: 71 sq. ft
Counted as Living Area: No

Heated: No
Finished: Yes
Enclosed: Yes
Contiguous: Yes
Permitted: Yes
Wet Space: No
Addition: No
Conversion: No

40 Maldives Crescent, Vales of Castlemore, Brampton, Peel County, Ontario, Canada, L6P

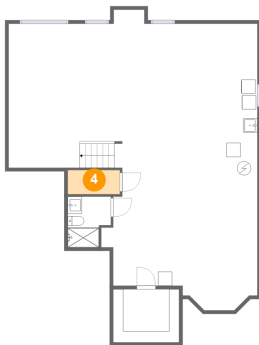
3 Floor 1 - Bath



Dimensions: 6'1" x 7'2"
Area: 39 sq. ft
Counted as Living Area: No

Heated: Yes
Finished: Yes
Enclosed: Yes
Contiguous: No
Permitted: Yes
Wet Space: Yes
Addition: No
Conversion: No

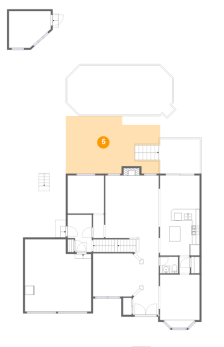
4 Floor 1 - Room



Dimensions: 7'5" x 3'5"
Area: 25 sq. ft
Counted as Living Area: No

Heated: Yes
Finished: Yes
Enclosed: Yes
Contiguous: No
Permitted: Yes
Wet Space: No
Addition: No
Conversion: No

5 Floor 2 - Patio

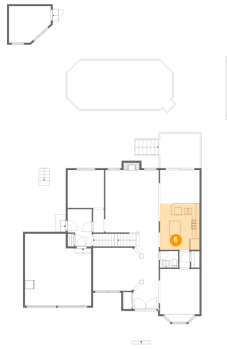


Dimensions: 25'3" x 15'4"
Area: 326 sq. ft
Counted as Living Area: No

Heated: No
Finished: Yes
Enclosed: No
Contiguous: Yes
Permitted: Yes
Wet Space: No
Addition: No
Conversion: No

40 Maldives Crescent, Vales of Castlemore, Brampton, Peel County, Ontario, Canada, L6P

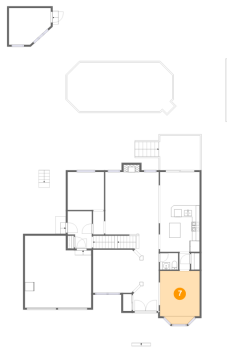
6 Floor 2 - Kitchen



Dimensions: 10'7" x 12'4"
Area: 131 sq. ft
Counted as Living Area:
Yes

Heated: Yes
Finished: Yes
Enclosed: Yes
Contiguous:
Yes
Permitted: Yes
Wet Space: No
Addition: No
Conversion: No

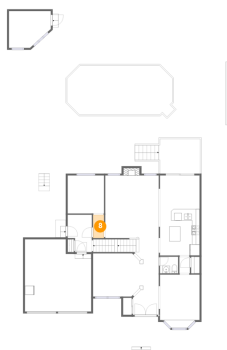
7 Floor 2 - Dining Room



Dimensions: 10'7" x 12'1"
Area: 142 sq. ft
Counted as Living Area:
Yes

Heated: Yes
Finished: Yes
Enclosed: Yes
Contiguous:
Yes
Permitted: Yes
Wet Space: No
Addition: No
Conversion: No

8 Floor 2 - Hall

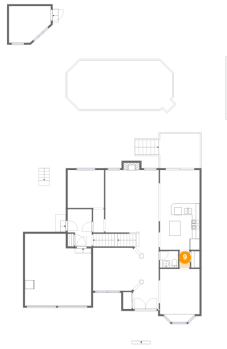


Dimensions: 2'11" x 6'2"
Area: 18 sq. ft
Counted as Living Area:
Yes

Heated: Yes
Finished: Yes
Enclosed: Yes
Contiguous:
Yes
Permitted: Yes
Wet Space: No
Addition: No
Conversion: No

40 Maldives Crescent, Vales of Castlemore, Brampton, Peel County, Ontario, Canada, L6P

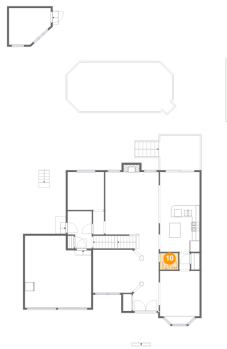
9 Floor 2 - Hall



Dimensions: 2'10" x 4'5"
Area: 12 sq. ft
Counted as Living Area:
Yes

Heated: Yes
Finished: Yes
Enclosed: Yes
Contiguous:
Yes
Permitted: Yes
Wet Space: No
Addition: No
Conversion: No

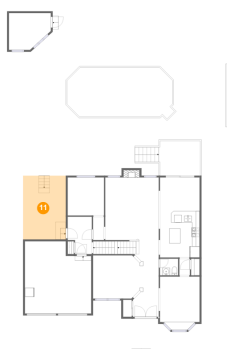
10 Floor 2 - Wc



Dimensions: 4'10" x 4'5"
Area: 21 sq. ft
Counted as Living Area:
Yes

Heated: Yes
Finished: Yes
Enclosed: Yes
Contiguous:
Yes
Permitted: Yes
Wet Space: Yes
Addition: No
Conversion: No

11 Floor 2 - Patio

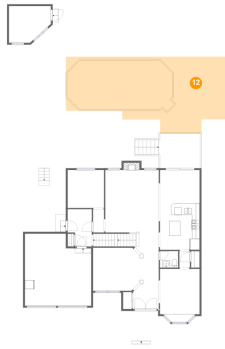


Dimensions: 11'5" x 17'0"
Area: 194 sq. ft
Counted as Living Area: No

Heated: No
Finished: Yes
Enclosed: No
Contiguous: Yes
Permitted: Yes
Wet Space: No
Addition: No
Conversion: No

40 Maldives Crescent, Vales of Castlemore, Brampton, Peel County, Ontario, Canada, L6P

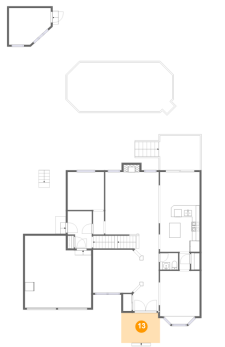
12 Floor 2 - Deck



Dimensions: 28'2" x 13'1"
Area: 723 sq. ft
Counted as Living Area: No

Heated: No
Finished: Yes
Enclosed: No
Contiguous: Yes
Permitted: Yes
Wet Space: No
Addition: No
Conversion: No

13 Floor 2 - Porch



Dimensions: 10'4" x 8'1"
Area: 83 sq. ft
Counted as Living Area: No

Heated: No
Finished: Yes
Enclosed: No
Contiguous: Yes
Permitted: Yes
Wet Space: No
Addition: No
Conversion: No

14 Floor 2 - Garage

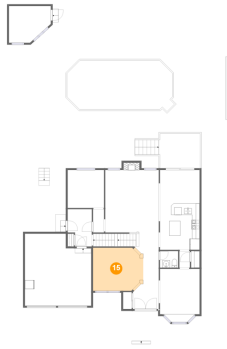


Dimensions: 17'8" x 19'3"
Area: 315 sq. ft
Counted as Living Area: No

Heated: No
Finished: Yes
Enclosed: Yes
Contiguous: Yes
Permitted: Yes
Wet Space: No
Addition: No
Conversion: No

40 Maldives Crescent, Vales of Castlemore, Brampton, Peel County, Ontario, Canada, L6P

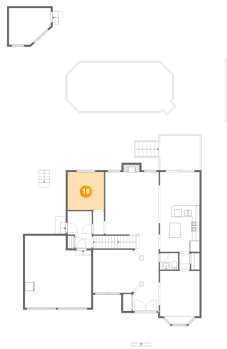
15 Floor 2 - Sitting Room



Dimensions: 13'5" x 11'6"
Area: 149 sq. ft
Counted as Living Area:
Yes

Heated: Yes
Finished: Yes
Enclosed: Yes
Contiguous:
Yes
Permitted: Yes
Wet Space: No
Addition: No
Conversion: No

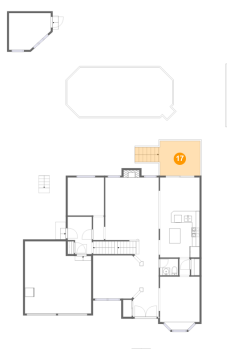
16 Floor 2 - Office



Dimensions: 9'9" x 10'1"
Area: 98 sq. ft
Counted as Living Area:
Yes

Heated: Yes
Finished: Yes
Enclosed: Yes
Contiguous:
Yes
Permitted: Yes
Wet Space: No
Addition: No
Conversion: No

17 Floor 2 - Deck



Dimensions: 17'6" x 9'3"
Area: 126 sq. ft
Counted as Living Area: No

Heated: No
Finished: Yes
Enclosed: No
Contiguous: Yes
Permitted: Yes
Wet Space: No
Addition: No
Conversion: No

40 Maldives Crescent, Vales of Castlemore, Brampton, Peel County, Ontario, Canada, L6P

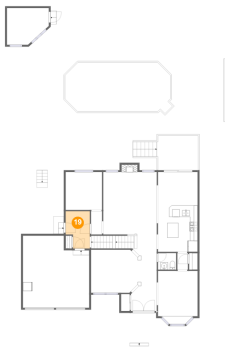
18 Floor 2 - Shed



Dimensions: 11'2" x 9'9"
Area: 96 sq. ft
Counted as Living Area: No

Heated: No
Finished: No
Enclosed: No
Contiguous: Yes
Permitted: Yes
Wet Space: No
Addition: No
Conversion: No

19 Floor 2 - Hall



Dimensions: 6'6" x 9'11"
Area: 57 sq. ft
Counted as Living Area:
Yes

Heated: Yes
Finished: Yes
Enclosed: Yes
Contiguous:
Yes
Permitted: Yes
Wet Space: No
Addition: No
Conversion: No

20 Floor 2 - Foyer

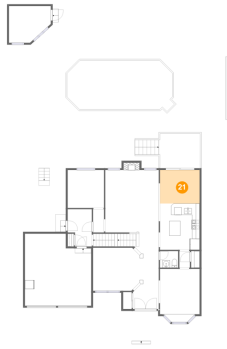


Dimensions: 6'11" x 20'7"
Area: 151 sq. ft
Counted as Living Area:
Yes

Heated: Yes
Finished: Yes
Enclosed: Yes
Contiguous:
Yes
Permitted: Yes
Wet Space: No
Addition: No
Conversion: No

40 Maldives Crescent, Vales of Castlemore, Brampton, Peel County, Ontario, Canada, L6P

21 Floor 2 - Breakfast Nook



Dimensions: 10'7" x 8'11"
Area: 95 sq. ft
Counted as Living Area:
Yes

Heated: Yes
Finished: Yes
Enclosed: Yes
Contiguous:
Yes
Permitted: Yes
Wet Space: No
Addition: No
Conversion: No

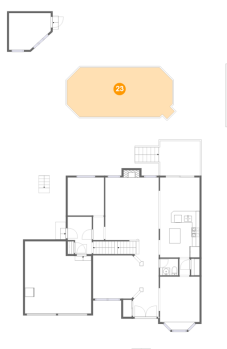
22 Floor 2 - Living Room



Dimensions: 14'4" x 17'0"
Area: 249 sq. ft
Counted as Living Area:
Yes

Heated: Yes
Finished: Yes
Enclosed: Yes
Contiguous:
Yes
Permitted: Yes
Wet Space: No
Addition: No
Conversion: No

23 Floor 2 - Swimming Pool

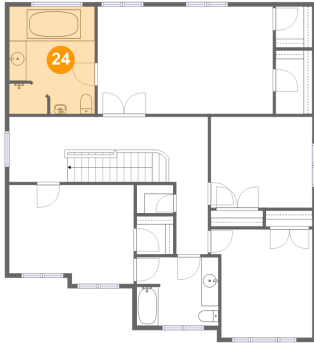


Dimensions: 28'2" x 13'1"
Area: 352 sq. ft
Counted as Living Area: No

Heated: No
Finished: No
Enclosed: No
Contiguous: Yes
Permitted: No
Wet Space: No
Addition: No
Conversion: No

40 Maldives Crescent, Vales of Castlemore, Brampton, Peel County, Ontario, Canada, L6P

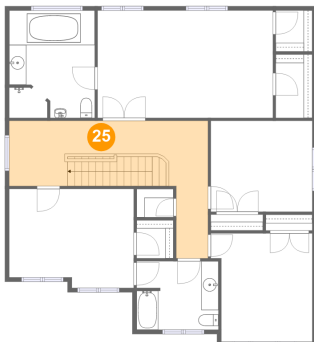
24 Floor 3 - Primary Bath



Dimensions: 9'11" x 12'6"
Area: 123 sq. ft
Counted as Living Area:
Yes

Heated: Yes
Finished: Yes
Enclosed: Yes
Contiguous:
Yes
Permitted: Yes
Wet Space: Yes
Addition: No
Conversion: No

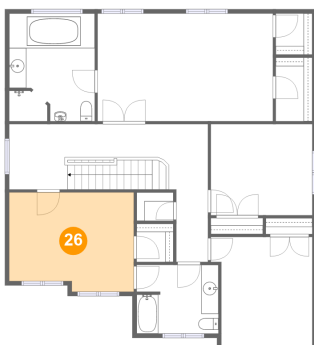
25 Floor 3 - Hall



Dimensions: 23'2" x 16'0"
Area: 206 sq. ft
Counted as Living Area:
Yes

Heated: Yes
Finished: Yes
Enclosed: Yes
Contiguous:
Yes
Permitted: Yes
Wet Space: No
Addition: No
Conversion: No

26 Floor 3 - Bedroom

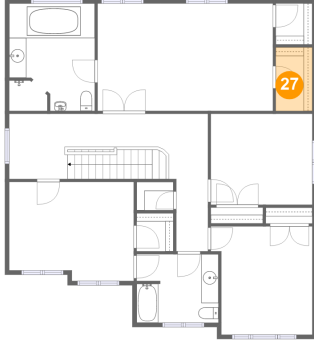


Dimensions: 14'6" x 11'6"
Area: 158 sq. ft
Counted as Living Area:
Yes

Heated: Yes
Finished: Yes
Enclosed: Yes
Contiguous:
Yes
Permitted: Yes
Wet Space: No
Addition: No
Conversion: No

40 Maldives Crescent, Vales of Castlemore, Brampton, Peel County, Ontario, Canada, L6P

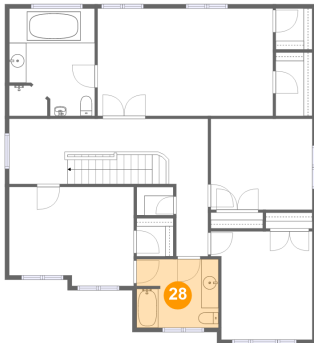
27 Floor 3 - W.i.c.



Dimensions: 4'3" x 7'5"
Area: 31 sq. ft
Counted as Living Area:
Yes

Heated: Yes
Finished: Yes
Enclosed: Yes
Contiguous:
Yes
Permitted: Yes
Wet Space: No
Addition: No
Conversion: No

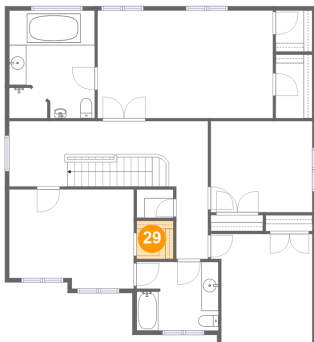
28 Floor 3 - Bath



Dimensions: 9'6" x 8'0"
Area: 75 sq. ft
Counted as Living Area:
Yes

Heated: Yes
Finished: Yes
Enclosed: Yes
Contiguous:
Yes
Permitted: Yes
Wet Space: Yes
Addition: No
Conversion: No

29 Floor 3 - W.i.c.

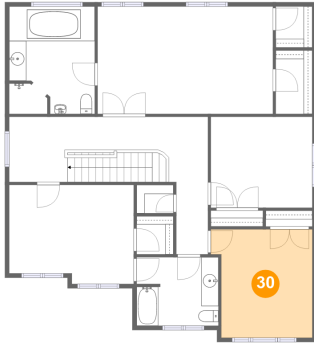


Dimensions: 4'3" x 4'5"
Area: 19 sq. ft
Counted as Living Area:
Yes

Heated: Yes
Finished: Yes
Enclosed: Yes
Contiguous:
Yes
Permitted: Yes
Wet Space: No
Addition: No
Conversion: No

40 Maldives Crescent, Vales of Castlemore, Brampton, Peel County, Ontario, Canada, L6P

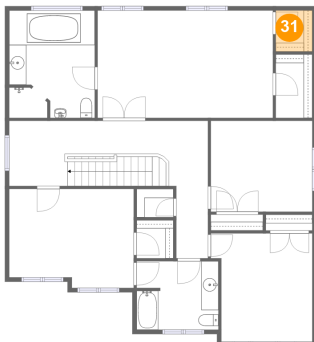
30 Floor 3 - Bedroom



Dimensions: 11'10" x 12'7"
Area: 137 sq. ft
Counted as Living Area:
Yes

Heated: Yes
Finished: Yes
Enclosed: Yes
Contiguous:
Yes
Permitted: Yes
Wet Space: No
Addition: No
Conversion: No

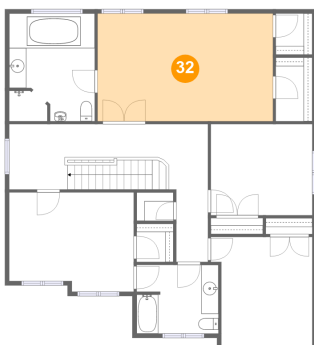
31 Floor 3 - W.i.c.



Dimensions: 4'3" x 4'9"
Area: 20 sq. ft
Counted as Living Area:
Yes

Heated: Yes
Finished: Yes
Enclosed: Yes
Contiguous:
Yes
Permitted: Yes
Wet Space: No
Addition: No
Conversion: No

32 Floor 3 - Primary Bedroom

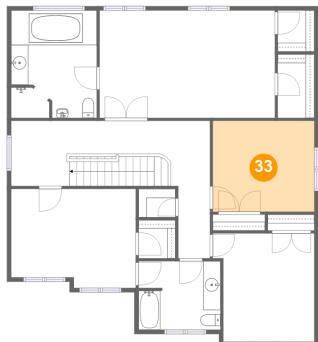


Dimensions: 20'5" x 12'6"
Area: 255 sq. ft
Counted as Living Area:
Yes

Heated: Yes
Finished: Yes
Enclosed: Yes
Contiguous:
Yes
Permitted: Yes
Wet Space: No
Addition: No
Conversion: No

40 Maldives Crescent, Vales of Castlemore, Brampton, Peel County, Ontario, Canada, L6P

33 Floor 3 - Bedroom



Dimensions: 11'10" x 10'7"
Area: 125 sq. ft
Counted as Living Area:
Yes

Heated: Yes
Finished: Yes
Enclosed: Yes
Contiguous:
Yes
Permitted: Yes
Wet Space: No
Addition: No
Conversion: No