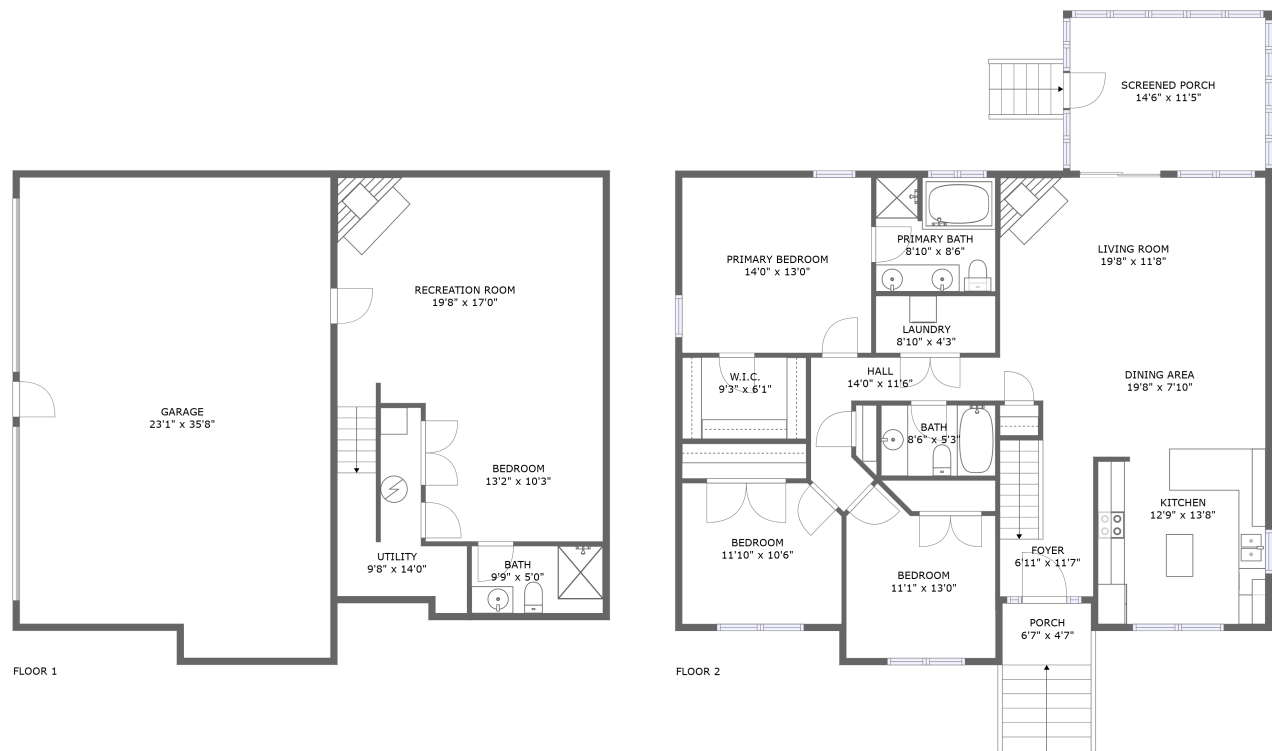




Home report


1218 Lynchburg Turnpike, Salem, Salem city, Virginia, United States, 24153





Property summary


 **1** Garages


 **4** Bedrooms

 **3** Bathrooms

 **0** Half baths

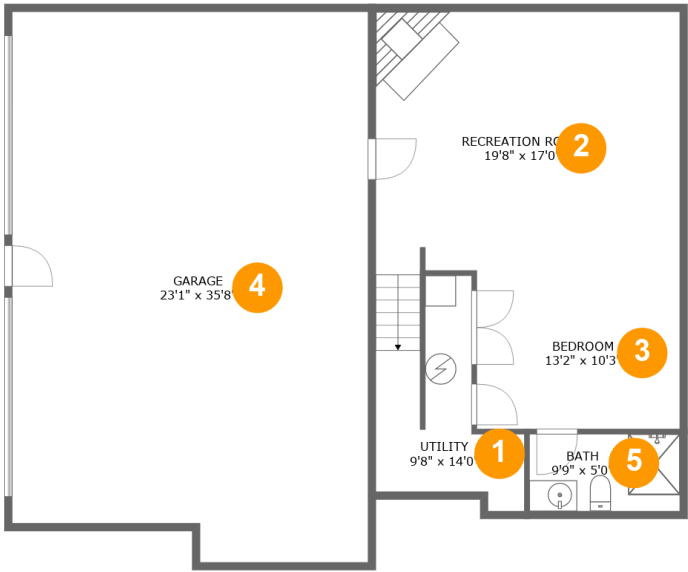
 **2** Floors

 **2,209** Gross living area sqft

 **3,301** Total sqft

Home report

1218 Lynchburg Turnpike, Salem, Salem city, Virginia, United States, 24153



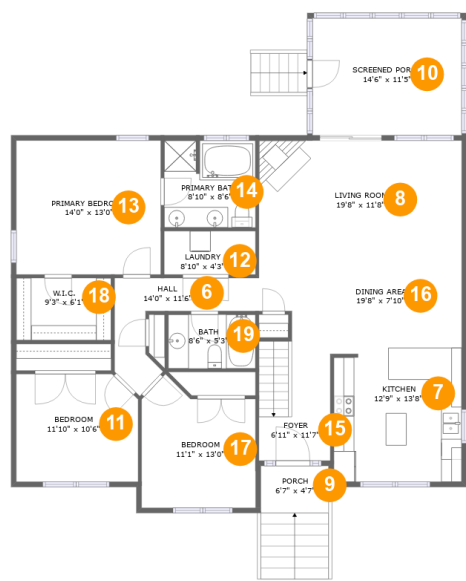
Room dimensions

Floor 1 Total sqft: 1517 Living area: 681

#		Dimensions	sqft	Counted as living area
1	Utility	9'8" x 14'0"	85 sq. ft	Yes
2	Recreation Room	19'8" x 17'0"	345 sq. ft	Yes
3	Bedroom	13'2" x 10'3"	135 sq. ft	Yes
4	Garage	23'1" x 35'8"	792 sq. ft	No
5	Bath	9'9" x 5'0"	49 sq. ft	Yes

Home report

1218 Lynchburg Turnpike, Salem, Salem city, Virginia, United States, 24153



Room dimensions

Floor 2 Total sqft: 1784 Living area: 1528

#		Dimensions	sqft	Counted as living area
6	Hall	14'0" x 11'6"	70 sq. ft	Yes
7	Kitchen	12'9" x 13'8"	169 sq. ft	Yes
8	Living Room	19'8" x 11'8"	229 sq. ft	Yes
9	Porch	6'7" x 4'7"	72 sq. ft	No
10	Screened Porch	14'6" x 11'5"	165 sq. ft	No
11	Bedroom	11'10" x 10'6"	121 sq. ft	Yes
12	Laundry	8'10" x 4'3"	37 sq. ft	Yes
13	Primary Bedroom	14'0" x 13'0"	183 sq. ft	Yes
14	Primary Bath	8'10" x 8'6"	74 sq. ft	Yes
15	Foyer	6'11" x 11'7"	80 sq. ft	Yes
16	Dining Area	19'8" x 7'10"	145 sq. ft	Yes

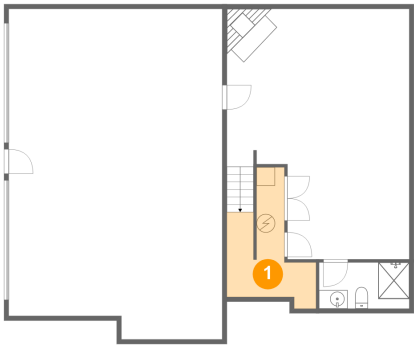
Home report

1218 Lynchburg Turnpike, Salem, Salem city, Virginia, United States, 24153

#		Dimensions	sqft	Counted as living area
17	Bedroom	11'1" x 13'0"	123 sq. ft	Yes
18	W.I.C.	9'3" x 6'1"	56 sq. ft	Yes
19	Bath	8'6" x 5'3"	44 sq. ft	Yes

1218 Lynchburg Turnpike, Salem, Salem city, Virginia, United States, 24153

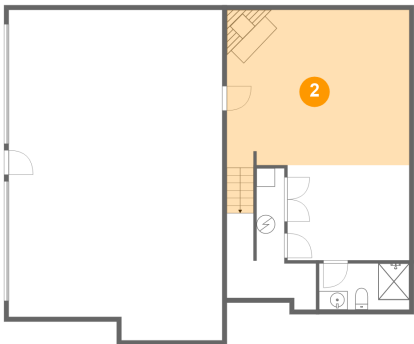
1 Floor 1 - Utility



Dimensions: 9'8" x 14'0"
Area: 85 sq. ft
Counted as living area: Yes

Heated: Yes
Finished: Yes
Enclosed: Yes
Contiguous: Yes
Permitted: Yes
Wet space: No
Addition: No
Conversion: No

2 Floor 1 - Recreation Room

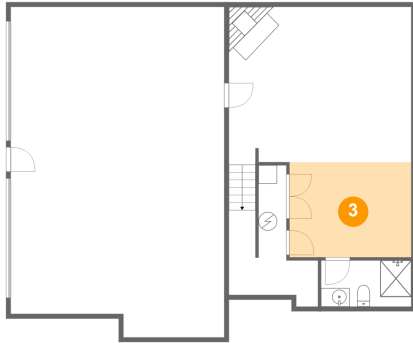


Dimensions: 19'8" x 17'0"
Area: 345 sq. ft
Counted as living area: Yes

Heated: Yes
Finished: Yes
Enclosed: Yes
Contiguous: Yes
Permitted: Yes
Wet space: No
Addition: No
Conversion: No

1218 Lynchburg Turnpike, Salem, Salem city, Virginia, United States, 24153

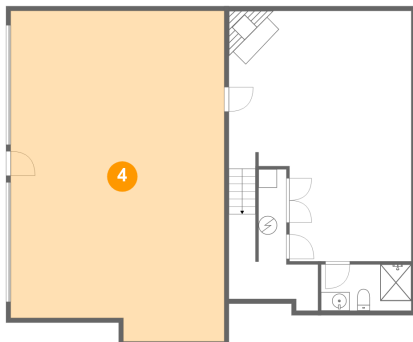
3 Floor 1 - Bedroom



Dimensions: 13'2" x 10'3"
Area: 135 sq. ft
Counted as living area: Yes

Heated: Yes
Finished: Yes
Enclosed: Yes
Contiguous: Yes
Permitted: Yes
Wet space: No
Addition: No
Conversion: No

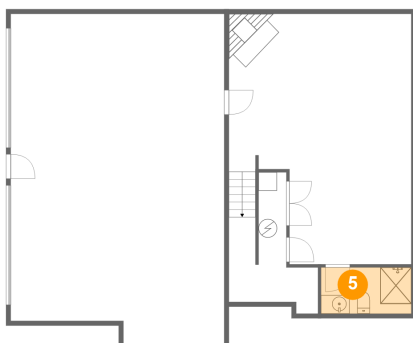
4 Floor 1 - Garage



Dimensions: 23'1" x 35'8"
Area: 792 sq. ft
Counted as living area: No

Heated: No
Finished: No
Enclosed: Yes
Contiguous: Yes
Permitted: Yes
Wet space: No
Addition: No
Conversion: No

5 Floor 1 - Bath

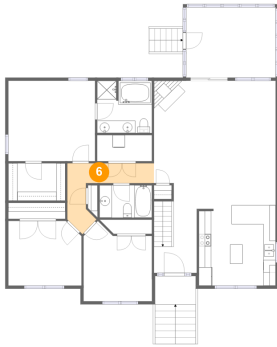


Dimensions: 9'9" x 5'0"
Area: 49 sq. ft
Counted as living area: Yes

Heated: Yes
Finished: Yes
Enclosed: Yes
Contiguous: Yes
Permitted: Yes
Wet space: Yes
Addition: No
Conversion: No

1218 Lynchburg Turnpike, Salem, Salem city, Virginia, United States, 24153

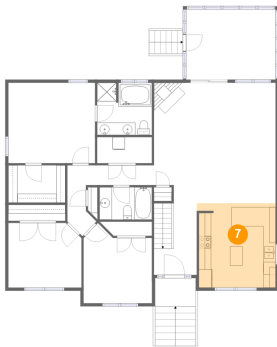
6 Floor 2 - Hall



Dimensions: 14'0" x 11'6"
Area: 70 sq. ft
Counted as living area: Yes

Heated: Yes
Finished: Yes
Enclosed: Yes
Contiguous: Yes
Permitted: Yes
Wet space: No
Addition: No
Conversion: No

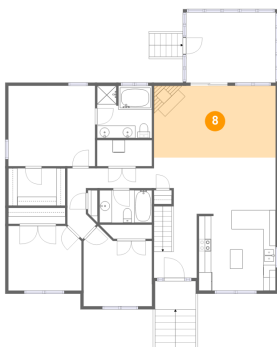
7 Floor 2 - Kitchen



Dimensions: 12'9" x 13'8"
Area: 169 sq. ft
Counted as living area: Yes

Heated: Yes
Finished: Yes
Enclosed: Yes
Contiguous: Yes
Permitted: Yes
Wet space: No
Addition: No
Conversion: No

8 Floor 2 - Living Room

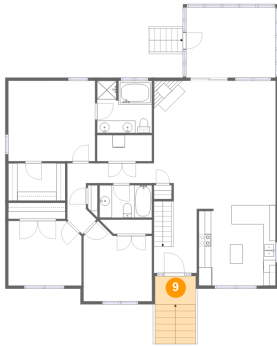


Dimensions: 19'8" x 11'8"
Area: 229 sq. ft
Counted as living area: Yes

Heated: Yes
Finished: Yes
Enclosed: Yes
Contiguous: Yes
Permitted: Yes
Wet space: No
Addition: No
Conversion: No

1218 Lynchburg Turnpike, Salem, Salem city, Virginia, United States, 24153

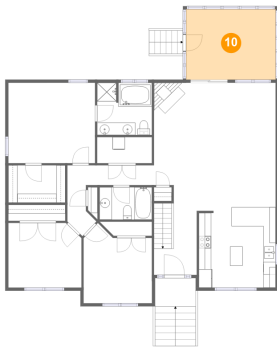
9 Floor 2 - Porch



Dimensions: 6'7" x 4'7"
Area: 72 sq. ft
Counted as living area: No

Heated: No
Finished: Yes
Enclosed: No
Contiguous: Yes
Permitted: Yes
Wet space: No
Addition: No
Conversion: No

10 Floor 2 - Screened Porch



Dimensions: 14'6" x 11'5"
Area: 165 sq. ft
Counted as living area: No

Heated: No
Finished: Yes
Enclosed: No
Contiguous: Yes
Permitted: Yes
Wet space: No
Addition: No
Conversion: No

11 Floor 2 - Bedroom

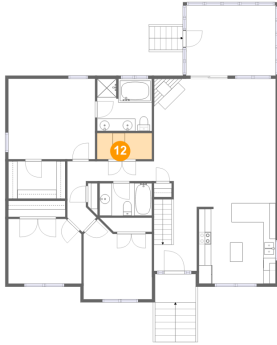


Dimensions: 11'10" x 10'6"
Area: 121 sq. ft
Counted as living area: Yes

Heated: Yes
Finished: Yes
Enclosed: Yes
Contiguous: Yes
Permitted: Yes
Wet space: No
Addition: No
Conversion: No

1218 Lynchburg Turnpike, Salem, Salem city, Virginia, United States, 24153

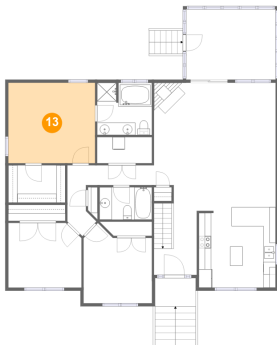
12 Floor 2 - Laundry



Dimensions: 8'10" x 4'3"
Area: 37 sq. ft
Counted as living area: Yes

Heated: Yes
Finished: Yes
Enclosed: Yes
Contiguous: Yes
Permitted: Yes
Wet space: No
Addition: No
Conversion: No

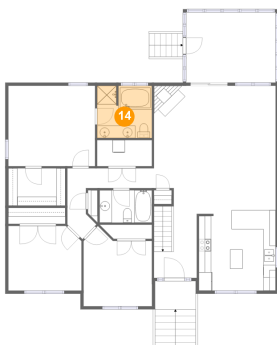
13 Floor 2 - Primary Bedroom



Dimensions: 14'0" x 13'0"
Area: 183 sq. ft
Counted as living area: Yes

Heated: Yes
Finished: Yes
Enclosed: Yes
Contiguous: Yes
Permitted: Yes
Wet space: No
Addition: No
Conversion: No

14 Floor 2 - Primary Bath

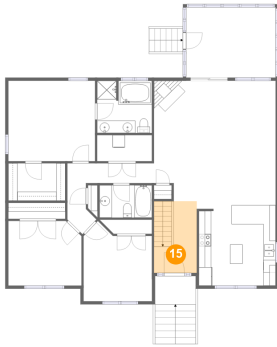


Dimensions: 8'10" x 8'6"
Area: 74 sq. ft
Counted as living area: Yes

Heated: Yes
Finished: Yes
Enclosed: Yes
Contiguous: Yes
Permitted: Yes
Wet space: Yes
Addition: No
Conversion: No

1218 Lynchburg Turnpike, Salem, Salem city, Virginia, United States, 24153

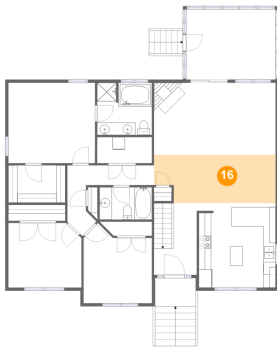
15 Floor 2 - Foyer



Dimensions: 6'11" x 11'7"
Area: 80 sq. ft
Counted as living area: Yes

Heated: Yes
Finished: Yes
Enclosed: Yes
Contiguous: Yes
Permitted: Yes
Wet space: No
Addition: No
Conversion: No

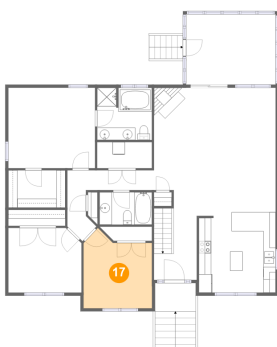
16 Floor 2 - Dining Area



Dimensions: 19'8" x 7'10"
Area: 145 sq. ft
Counted as living area: Yes

Heated: Yes
Finished: Yes
Enclosed: Yes
Contiguous: Yes
Permitted: Yes
Wet space: No
Addition: No
Conversion: No

17 Floor 2 - Bedroom



Dimensions: 11'1" x 13'0"
Area: 123 sq. ft
Counted as living area: Yes

Heated: Yes
Finished: Yes
Enclosed: Yes
Contiguous: Yes
Permitted: Yes
Wet space: No
Addition: No
Conversion: No

1218 Lynchburg Turnpike, Salem, Salem city, Virginia, United States, 24153

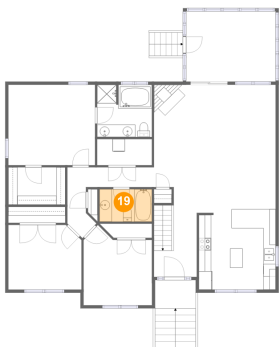
18 Floor 2 - W.I.C.



Dimensions: 9'3" x 6'1"
Area: 56 sq. ft
Counted as living area: Yes

Heated: Yes
Finished: Yes
Enclosed: Yes
Contiguous: Yes
Permitted: Yes
Wet space: No
Addition: No
Conversion: No

19 Floor 2 - Bath



Dimensions: 8'6" x 5'3"
Area: 44 sq. ft
Counted as living area: Yes

Heated: Yes
Finished: Yes
Enclosed: Yes
Contiguous: Yes
Permitted: Yes
Wet space: Yes
Addition: No
Conversion: No