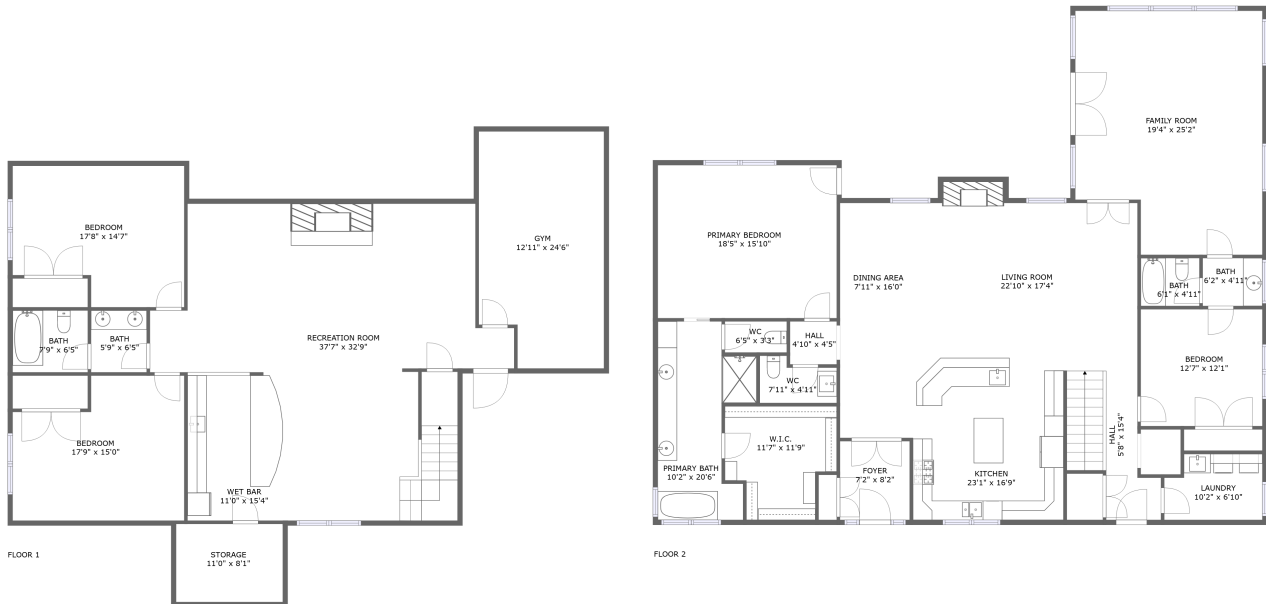


# 2501 Sweetwater Trail, Cheyenne, WY, US



## Property summary

 **0** Garages

 **4** Bedrooms

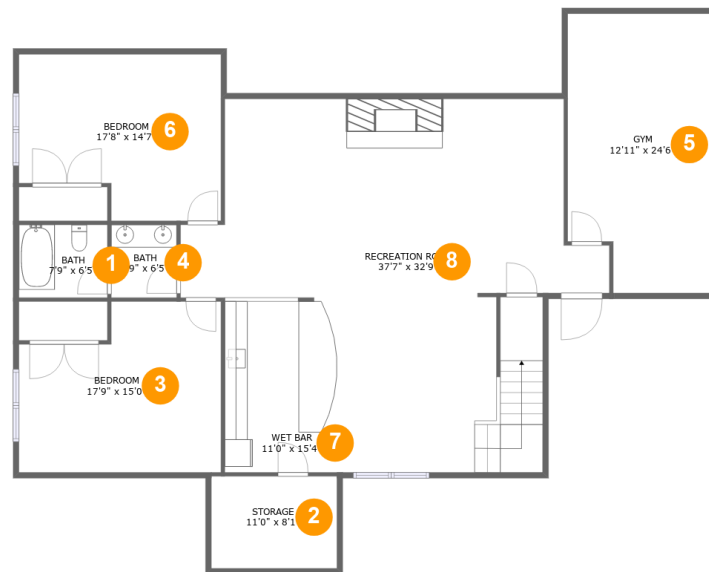
 **3** Bathrooms

 **1** Half baths

 **2** Floors

 **4,652** Gross living area sqft

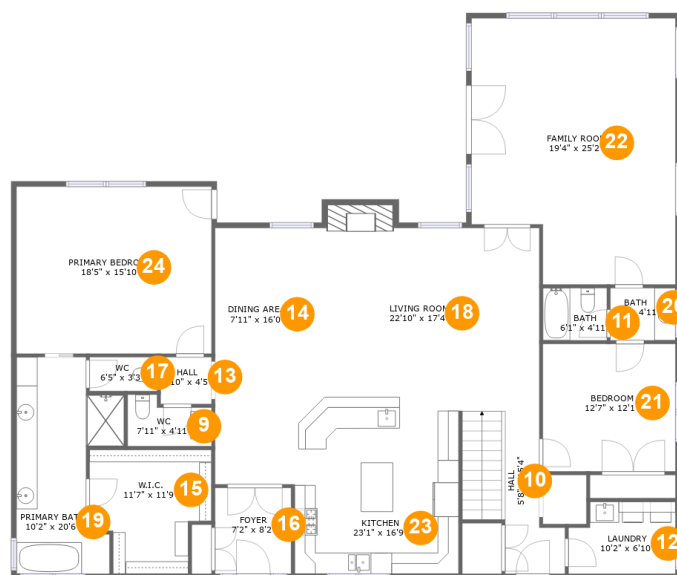
 **4,771** Total sqft

**2501 Sweetwater Trail, Cheyenne, WY, US****Room dimensions**

Floor 1

Total sqft: 2135 Living area: 2032

#		Dimensions	sqft	Counted as living area
1	Bath	7'9" x 6'5"	50 sq. ft	Yes
2	Storage	11'0" x 8'1"	89 sq. ft	No
3	Bedroom	17'9" x 15'0"	235 sq. ft	Yes
4	Bath	5'9" x 6'5"	37 sq. ft	Yes
5	Gym	12'11" x 24'6"	299 sq. ft	Yes
6	Bedroom	17'8" x 14'7"	232 sq. ft	Yes
7	Wet Bar	11'0" x 15'4"	169 sq. ft	Yes
8	Recreation Room	37'7" x 32'9"	813 sq. ft	Yes

**2501 Sweetwater Trail, Cheyenne, WY, US****Room dimensions**

Floor 2

Total sqft: 2636 Living area: 2620

#		Dimensions	sqft	Counted as living area
9	WC	7'11" x 4'11"	32 sq. ft	Yes
10	Hall	5'8" x 15'4"	102 sq. ft	Yes
11	Bath	6'1" x 4'11"	30 sq. ft	Yes
12	Laundry	10'2" x 6'10"	64 sq. ft	Yes
13	Hall	4'10" x 4'5"	21 sq. ft	Yes
14	Dining Area	7'11" x 16'0"	127 sq. ft	Yes
15	W.I.C.	11'7" x 11'9"	116 sq. ft	Yes
16	Foyer	7'2" x 8'2"	59 sq. ft	Yes
17	WC	6'5" x 3'3"	21 sq. ft	Yes
18	Living Room	22'10" x 17'4"	389 sq. ft	Yes
19	Primary Bath	10'2" x 20'6"	161 sq. ft	Yes

Scan captured on Fri, 14 Mar 2025 17:21:55 GMT

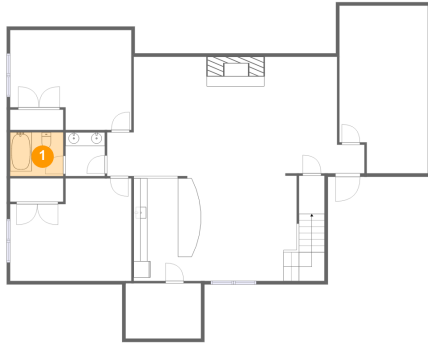
Information is calculated by Cubicasa technology deemed highly reliable but not guaranteed.

**2501 Sweetwater Trail, Cheyenne, WY, US**

#		Dimensions	sqft	Counted as living area
20	Bath	6'2" x 4'11"	31 sq. ft	Yes
21	Bedroom	12'7" x 12'1"	152 sq. ft	Yes
22	Family Room	19'4" x 25'2"	449 sq. ft	Yes
23	Kitchen	23'1" x 16'9"	322 sq. ft	Yes
24	Primary Bedroom	18'5" x 15'10"	292 sq. ft	Yes

# 2501 Sweetwater Trail, Cheyenne, WY, US

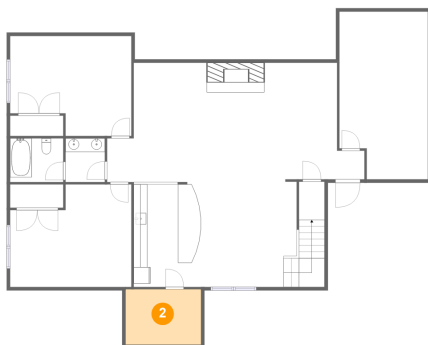
## 1 Floor 1 - Bath



**Dimensions:** 7'9" x 6'5"  
**Area:** 50 sq. ft  
**Counted as living area:** Yes

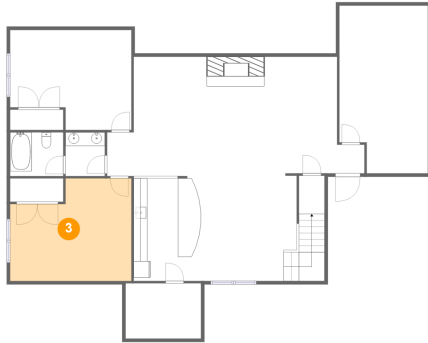
**Heated:** Yes  
**Finished:** Yes  
**Enclosed:** Yes  
**Contiguous:** Yes  
**Permitted:** Yes  
**Wet space:** Yes  
**Addition:** No  
**Conversion:** No

## 2 Floor 1 - Storage



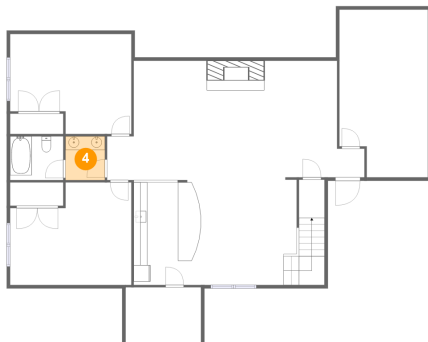
**Dimensions:** 11'0" x 8'1"  
**Area:** 89 sq. ft  
**Counted as living area:** No

**Heated:** No  
**Finished:** No  
**Enclosed:** No  
**Contiguous:** Yes  
**Permitted:** Yes  
**Wet space:** No  
**Addition:** No  
**Conversion:** No

**2501 Sweetwater Trail, Cheyenne, WY, US****3 Floor 1 - Bedroom**

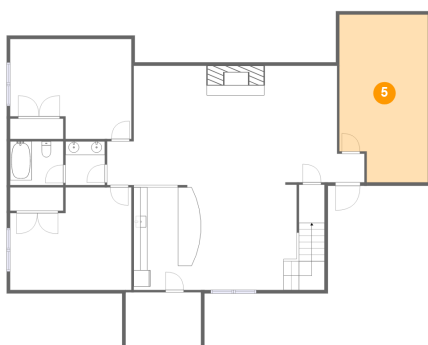
**Dimensions:** 17'9" x 15'0"  
**Area:** 235 sq. ft  
**Counted as living area:** Yes

**Heated:** Yes  
**Finished:** Yes  
**Enclosed:** Yes  
**Contiguous:** Yes  
**Permitted:** Yes  
**Wet space:** No  
**Addition:** No  
**Conversion:** No

**4 Floor 1 - Bath**

**Dimensions:** 5'9" x 6'5"  
**Area:** 37 sq. ft  
**Counted as living area:** Yes

**Heated:** Yes  
**Finished:** Yes  
**Enclosed:** Yes  
**Contiguous:** Yes  
**Permitted:** Yes  
**Wet space:** Yes  
**Addition:** No  
**Conversion:** No

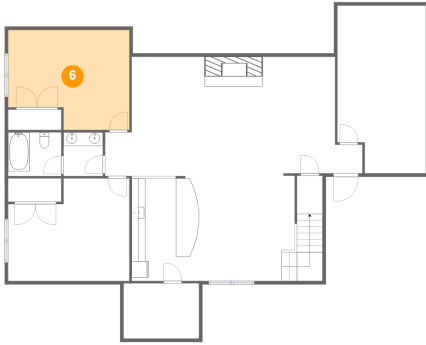
**5 Floor 1 - Gym**

**Dimensions:** 12'11" x 24'6"  
**Area:** 299 sq. ft  
**Counted as living area:** Yes

**Heated:** Yes  
**Finished:** Yes  
**Enclosed:** Yes  
**Contiguous:** Yes  
**Permitted:** Yes  
**Wet space:** No  
**Addition:** No  
**Conversion:** No

# 2501 Sweetwater Trail, Cheyenne, WY, US

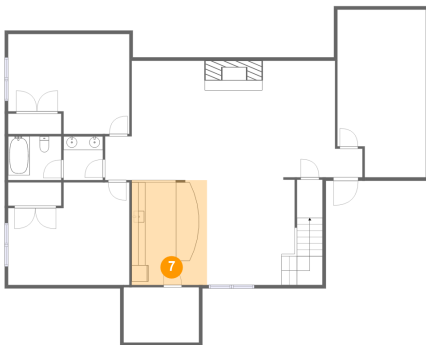
## 6 Floor 1 - Bedroom



Dimensions: 17'8" x 14'7"  
Area: 232 sq. ft  
Counted as living area: Yes

Heated: Yes  
Finished: Yes  
Enclosed: Yes  
Contiguous: Yes  
Permitted: Yes  
Wet space: No  
Addition: No  
Conversion: No

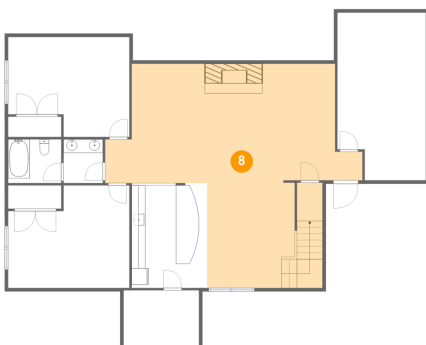
## 7 Floor 1 - Wet Bar



Dimensions: 11'0" x 15'4"  
Area: 169 sq. ft  
Counted as living area: Yes

Heated: Yes  
Finished: Yes  
Enclosed: Yes  
Contiguous: Yes  
Permitted: Yes  
Wet space: No  
Addition: No  
Conversion: No

## 8 Floor 1 - Recreation Room



Dimensions: 37'7" x 32'9"  
Area: 813 sq. ft  
Counted as living area: Yes

Heated: Yes  
Finished: Yes  
Enclosed: Yes  
Contiguous: Yes  
Permitted: Yes  
Wet space: No  
Addition: No  
Conversion: No

# 2501 Sweetwater Trail, Cheyenne, WY, US

## 9 Floor 2 - WC



**Dimensions:** 7'11" x 4'11"  
**Area:** 32 sq. ft  
**Counted as living area:** Yes

**Heated:** Yes  
**Finished:** Yes  
**Enclosed:** Yes  
**Contiguous:** Yes  
**Permitted:** Yes  
**Wet space:** Yes  
**Addition:** No  
**Conversion:** No

## 10 Floor 2 - Hall



**Dimensions:** 5'8" x 15'4"  
**Area:** 102 sq. ft  
**Counted as living area:** Yes

**Heated:** Yes  
**Finished:** Yes  
**Enclosed:** Yes  
**Contiguous:** Yes  
**Permitted:** Yes  
**Wet space:** No  
**Addition:** No  
**Conversion:** No

## 11 Floor 2 - Bath



**Dimensions:** 6'1" x 4'11"  
**Area:** 30 sq. ft  
**Counted as living area:** Yes

**Heated:** Yes  
**Finished:** Yes  
**Enclosed:** Yes  
**Contiguous:** Yes  
**Permitted:** Yes  
**Wet space:** Yes  
**Addition:** No  
**Conversion:** No



# 2501 Sweetwater Trail, Cheyenne, WY, US

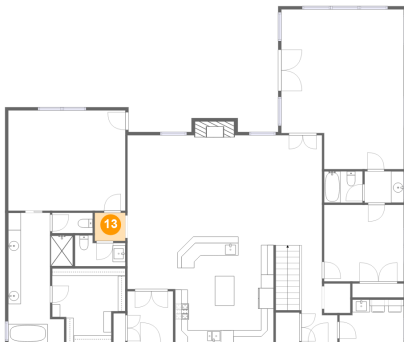
## 12 Floor 2 - Laundry



Dimensions: 10'2" x 6'10"  
Area: 64 sq. ft  
Counted as living area: Yes

Heated: Yes  
Finished: Yes  
Enclosed: Yes  
Contiguous: Yes  
Permitted: Yes  
Wet space: No  
Addition: No  
Conversion: No

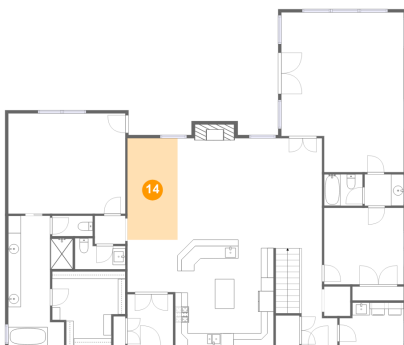
## 13 Floor 2 - Hall



Dimensions: 4'10" x 4'5"  
Area: 21 sq. ft  
Counted as living area: Yes

Heated: Yes  
Finished: Yes  
Enclosed: Yes  
Contiguous: Yes  
Permitted: Yes  
Wet space: No  
Addition: No  
Conversion: No

## 14 Floor 2 - Dining Area



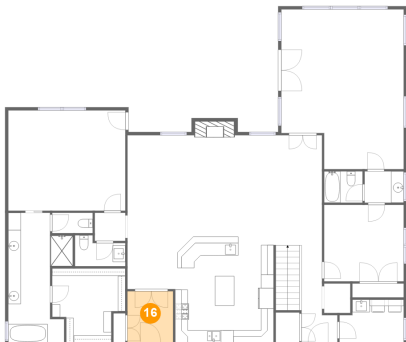
Dimensions: 7'11" x 16'0"  
Area: 127 sq. ft  
Counted as living area: Yes

Heated: Yes  
Finished: Yes  
Enclosed: Yes  
Contiguous: Yes  
Permitted: Yes  
Wet space: No  
Addition: No  
Conversion: No

**2501 Sweetwater Trail, Cheyenne, WY, US****15 Floor 2 - W.I.C.**

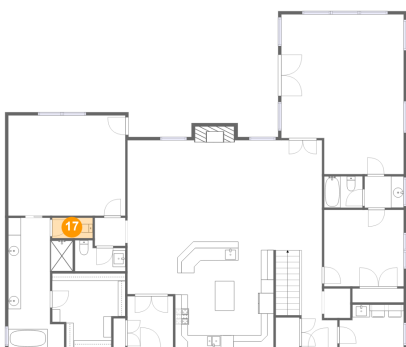
**Dimensions:** 11'7" x 11'9"  
**Area:** 116 sq. ft  
**Counted as living area:** Yes

**Heated:** Yes  
**Finished:** Yes  
**Enclosed:** Yes  
**Contiguous:** Yes  
**Permitted:** Yes  
**Wet space:** No  
**Addition:** No  
**Conversion:** No

**16 Floor 2 - Foyer**

**Dimensions:** 7'2" x 8'2"  
**Area:** 59 sq. ft  
**Counted as living area:** Yes

**Heated:** Yes  
**Finished:** Yes  
**Enclosed:** Yes  
**Contiguous:** Yes  
**Permitted:** Yes  
**Wet space:** No  
**Addition:** No  
**Conversion:** No

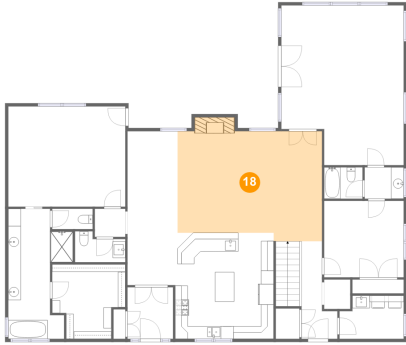
**17 Floor 2 - WC**

**Dimensions:** 6'5" x 3'3"  
**Area:** 21 sq. ft  
**Counted as living area:** Yes

**Heated:** Yes  
**Finished:** Yes  
**Enclosed:** Yes  
**Contiguous:** Yes  
**Permitted:** Yes  
**Wet space:** Yes  
**Addition:** No  
**Conversion:** No

# 2501 Sweetwater Trail, Cheyenne, WY, US

## 18 Floor 2 - Living Room



Dimensions: 22'10" x 17'4"  
Area: 389 sq. ft  
Counted as living area: Yes

Heated: Yes  
Finished: Yes  
Enclosed: Yes  
Contiguous: Yes  
Permitted: Yes  
Wet space: No  
Addition: No  
Conversion: No

## 19 Floor 2 - Primary Bath



Dimensions: 10'2" x 20'6"  
Area: 161 sq. ft  
Counted as living area: Yes

Heated: Yes  
Finished: Yes  
Enclosed: Yes  
Contiguous: Yes  
Permitted: Yes  
Wet space: Yes  
Addition: No  
Conversion: No

## 20 Floor 2 - Bath



Dimensions: 6'2" x 4'11"  
Area: 31 sq. ft  
Counted as living area: Yes

Heated: Yes  
Finished: Yes  
Enclosed: Yes  
Contiguous: Yes  
Permitted: Yes  
Wet space: Yes  
Addition: No  
Conversion: No

# 2501 Sweetwater Trail, Cheyenne, WY, US

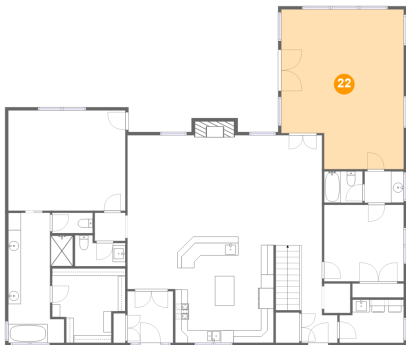
## 21 Floor 2 - Bedroom



**Dimensions:** 12'7" x 12'1"  
**Area:** 152 sq. ft  
**Counted as living area:** Yes

**Heated:** Yes  
**Finished:** Yes  
**Enclosed:** Yes  
**Contiguous:** Yes  
**Permitted:** Yes  
**Wet space:** No  
**Addition:** No  
**Conversion:** No

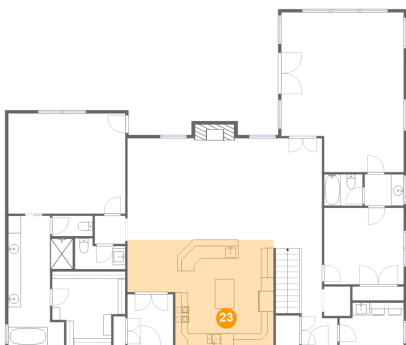
## 22 Floor 2 - Family Room



**Dimensions:** 19'4" x 25'2"  
**Area:** 449 sq. ft  
**Counted as living area:** Yes

**Heated:** Yes  
**Finished:** Yes  
**Enclosed:** Yes  
**Contiguous:** Yes  
**Permitted:** Yes  
**Wet space:** No  
**Addition:** No  
**Conversion:** No

## 23 Floor 2 - Kitchen



**Dimensions:** 23'1" x 16'9"  
**Area:** 322 sq. ft  
**Counted as living area:** Yes

**Heated:** Yes  
**Finished:** Yes  
**Enclosed:** Yes  
**Contiguous:** Yes  
**Permitted:** Yes  
**Wet space:** No  
**Addition:** No  
**Conversion:** No

# 2501 Sweetwater Trail, Cheyenne, WY, US

## 24 Floor 2 - Primary Bedroom



**Dimensions:** 18'5" x 15'10"  
**Area:** 292 sq. ft  
**Counted as living area:** Yes

**Heated:** Yes  
**Finished:** Yes  
**Enclosed:** Yes  
**Contiguous:** Yes  
**Permitted:** Yes  
**Wet space:** No  
**Addition:** No  
**Conversion:** No