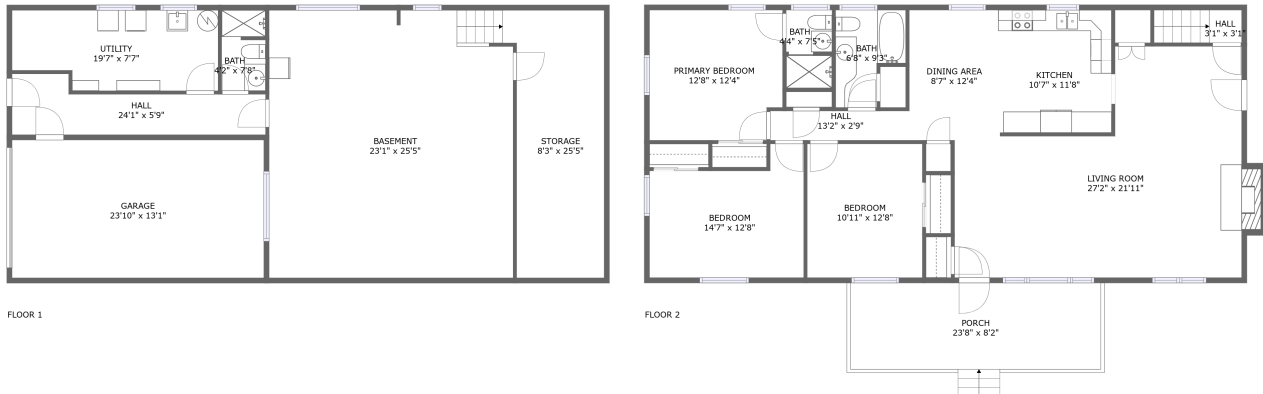






815 Hartsook Boulevard Southeast, Garden City, Roanoke, Roanoke, Virginia, United States,

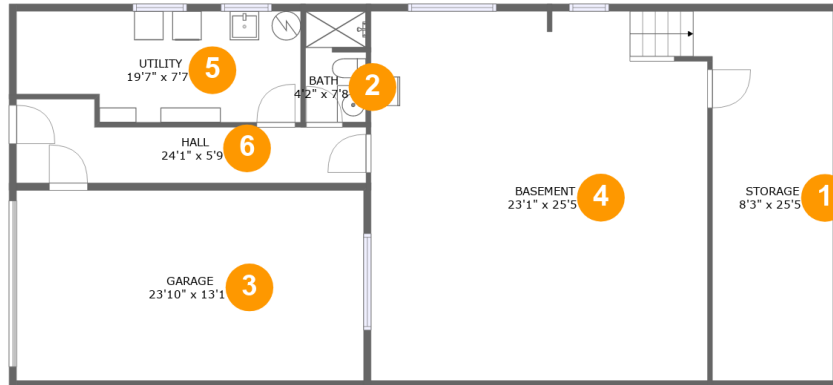


Property Summary

 **1** garages  **3** bedrooms  **3** bathrooms  **0** half baths

 **2** floors  **2,268** Gross Living Area sqft  **3,223** total sqft

815 Hartsook Boulevard Southeast, Garden City, Roanoke, Roanoke, Virginia, United States,



Room Dimensions

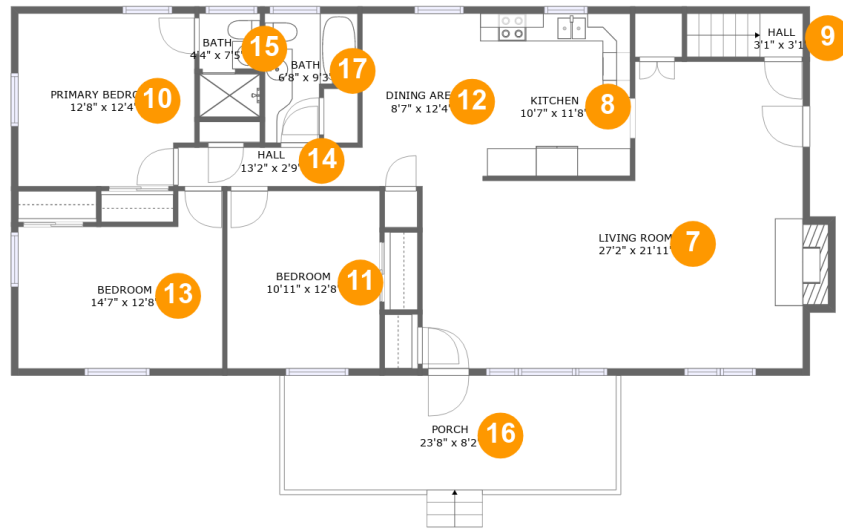
Floor 1

Total sqft: 1508

Living area: 794

#	Room name	Dimensions	Area (sqft)	Counted as Living Area
1	Storage	8'3" x 25'5"	211 sq. ft	No
2	Bath	4'2" x 7'8"	31 sq. ft	Yes
3	Garage	23'10" x 13'1"	312 sq. ft	No
4	Basement	23'1" x 25'5"	588 sq. ft	Yes
5	Utility	19'7" x 7'7"	138 sq. ft	No
6	Hall	24'1" x 5'9"	103 sq. ft	Yes

815 Hartsook Boulevard Southeast, Garden City, Roanoke, Roanoke, Virginia, United States,



Room Dimensions

Floor 2

Total sqft: 1715

Living area: 1474

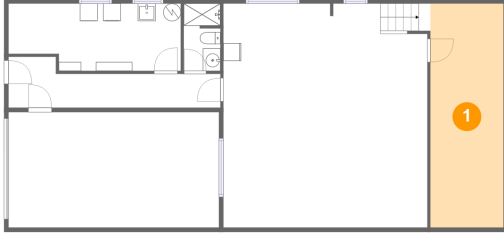
#	Room name	Dimensions	Area (sqft)	Counted as Living Area
7	Living Room	27'2" x 21'11"	479 sq. ft	Yes
8	Kitchen	10'7" x 11'8"	123 sq. ft	Yes
9	Hall	3'1" x 3'1"	26 sq. ft	Yes
10	Primary Bedroom	12'8" x 12'4"	151 sq. ft	Yes
11	Bedroom	10'11" x 12'8"	139 sq. ft	Yes
12	Dining Area	8'7" x 12'4"	105 sq. ft	Yes
13	Bedroom	14'7" x 12'8"	156 sq. ft	Yes
14	Hall	13'2" x 2'9"	37 sq. ft	Yes
15	Bath	4'4" x 7'5"	32 sq. ft	No
16	Porch	23'8" x 8'2"	194 sq. ft	No
17	Bath	6'8" x 9'3"	50 sq. ft	Yes

Scan captured on Wed, 28 Aug 2024 14:58:20 GMT

Information is calculated by CubiCasa technology; deemed highly reliable but not guaranteed.

815 Hartsook Boulevard Southeast, Garden City, Roanoke, Roanoke, Virginia, United States,

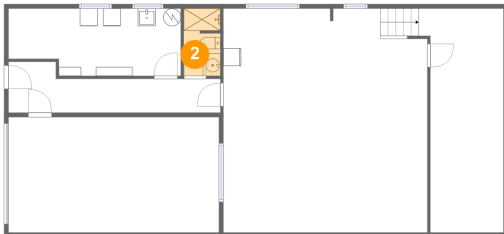
1 Floor 1 - Storage



Dimensions: 8'3" x 25'5"
Area: 211 sq. ft
Counted as Living Area: No

Heated: No
Finished: No
Enclosed: No
Contiguous: Yes
Permitted: Yes
Wet Space: No
Addition: No
Conversion: No

2 Floor 1 - Bath

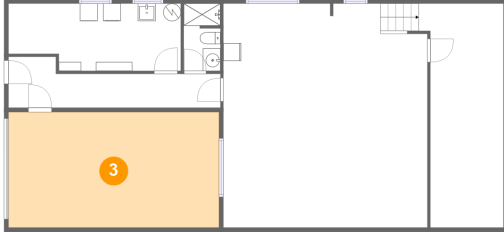


Dimensions: 4'2" x 7'8"
Area: 31 sq. ft
Counted as Living Area:
Yes

Heated: Yes
Finished: Yes
Enclosed: Yes
Contiguous:
Yes
Permitted: Yes
Wet Space: Yes
Addition: No
Conversion: No

815 Hartsook Boulevard Southeast, Garden City, Roanoke, Roanoke, Virginia, United States,

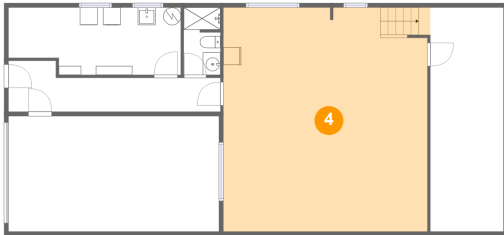
3 Floor 1 - Garage



Dimensions: 23'10" x 13'1"
Area: 312 sq. ft
Counted as Living Area: No

Heated: No
Finished: No
Enclosed: Yes
Contiguous: Yes
Permitted: Yes
Wet Space: No
Addition: No
Conversion: No

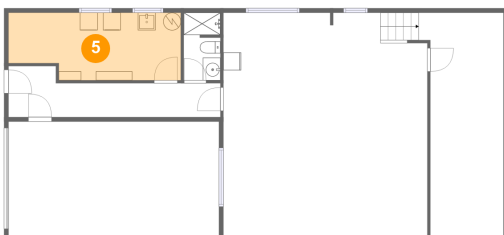
4 Floor 1 - Basement



Dimensions: 23'1" x 25'5"
Area: 588 sq. ft
Counted as Living Area:
Yes

Heated: Yes
Finished: Yes
Enclosed: Yes
Contiguous:
Yes
Permitted: Yes
Wet Space: No
Addition: No
Conversion: No

5 Floor 1 - Utility

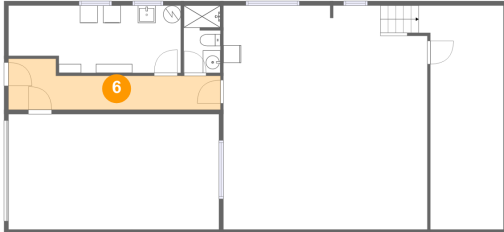


Dimensions: 19'7" x 7'7"
Area: 138 sq. ft
Counted as Living Area: No

Heated: Yes
Finished: No
Enclosed: Yes
Contiguous: Yes
Permitted: Yes
Wet Space: No
Addition: No
Conversion: No

815 Hartsook Boulevard Southeast, Garden City, Roanoke, Roanoke, Virginia, United States,

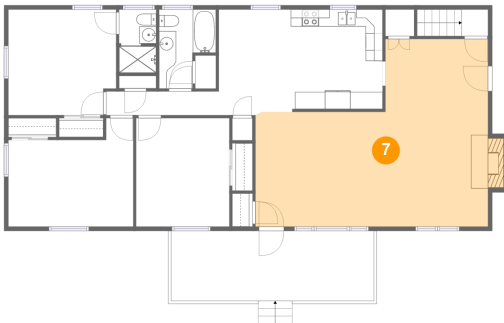
6 Floor 1 - Hall



Dimensions: 24'1" x 5'9"
Area: 103 sq. ft
Counted as Living Area:
Yes

Heated: Yes
Finished: Yes
Enclosed: Yes
Contiguous:
Yes
Permitted: Yes
Wet Space: No
Addition: No
Conversion: No

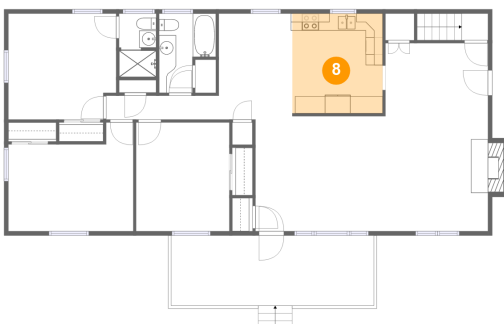
7 Floor 2 - Living Room



Dimensions: 27'2" x 21'11"
Area: 479 sq. ft
Counted as Living Area:
Yes

Heated: Yes
Finished: Yes
Enclosed: Yes
Contiguous:
Yes
Permitted: Yes
Wet Space: No
Addition: No
Conversion: No

8 Floor 2 - Kitchen



Dimensions: 10'7" x 11'8"
Area: 123 sq. ft
Counted as Living Area:
Yes

Heated: Yes
Finished: Yes
Enclosed: Yes
Contiguous:
Yes
Permitted: Yes
Wet Space: No
Addition: No
Conversion: No

815 Hartsook Boulevard Southeast, Garden City, Roanoke, Roanoke, Virginia, United States,

9 Floor 2 - Hall



Dimensions: 3'1" x 3'1"
Area: 26 sq. ft
Counted as Living Area:
Yes

Heated: Yes
Finished: Yes
Enclosed: Yes
Contiguous:
Yes
Permitted: Yes
Wet Space: No
Addition: No
Conversion: No

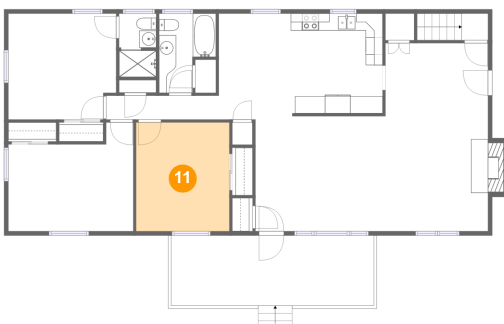
10 Floor 2 - Primary Bedroom



Dimensions: 12'8" x 12'4"
Area: 151 sq. ft
Counted as Living Area:
Yes

Heated: Yes
Finished: Yes
Enclosed: Yes
Contiguous:
Yes
Permitted: Yes
Wet Space: No
Addition: No
Conversion: No

11 Floor 2 - Bedroom

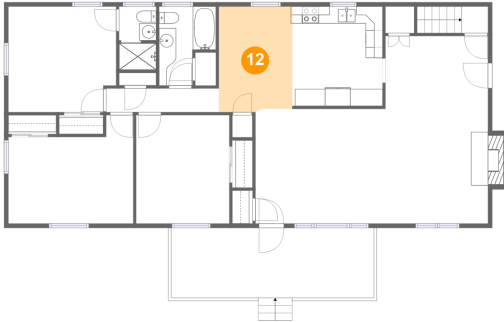


Dimensions: 10'11" x 12'8"
Area: 139 sq. ft
Counted as Living Area:
Yes

Heated: Yes
Finished: Yes
Enclosed: Yes
Contiguous:
Yes
Permitted: Yes
Wet Space: No
Addition: No
Conversion: No

815 Hartsook Boulevard Southeast, Garden City, Roanoke, Roanoke, Virginia, United States,

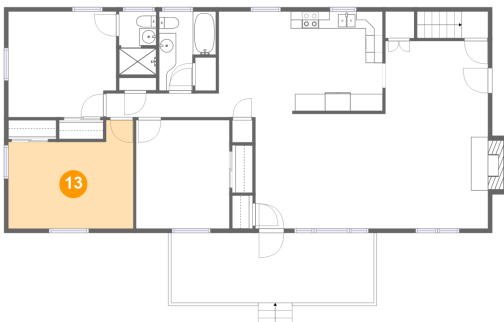
12 Floor 2 - Dining Area



Dimensions: 8'7" x 12'4"
Area: 105 sq. ft
Counted as Living Area:
Yes

Heated: Yes
Finished: Yes
Enclosed: Yes
Contiguous:
Yes
Permitted: Yes
Wet Space: No
Addition: No
Conversion: No

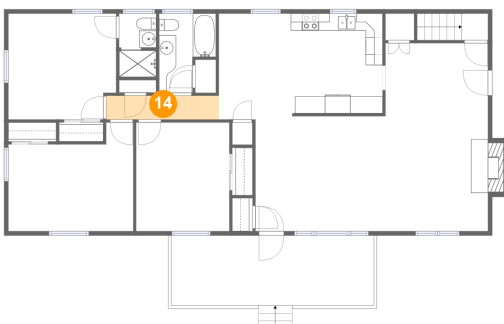
13 Floor 2 - Bedroom



Dimensions: 14'7" x 12'8"
Area: 156 sq. ft
Counted as Living Area:
Yes

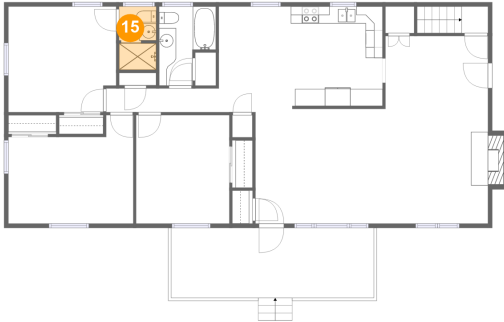
Heated: Yes
Finished: Yes
Enclosed: Yes
Contiguous:
Yes
Permitted: Yes
Wet Space: No
Addition: No
Conversion: No

14 Floor 2 - Hall



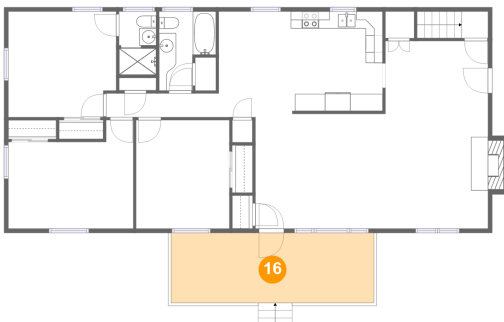
Dimensions: 13'2" x 2'9"
Area: 37 sq. ft
Counted as Living Area:
Yes

Heated: Yes
Finished: Yes
Enclosed: Yes
Contiguous:
Yes
Permitted: Yes
Wet Space: No
Addition: No
Conversion: No

**815 Hartsook Boulevard Southeast, Garden City,
Roanoke, Roanoke, Virginia, United States,****15 Floor 2 - Bath**

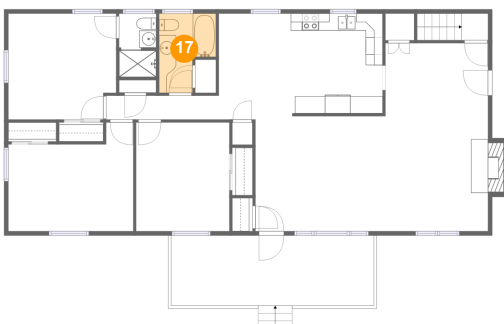
Dimensions: 4'4" x 7'5"
Area: 32 sq. ft
Counted as Living Area: No

Heated: Yes
Finished: Yes
Enclosed: Yes
Contiguous: Yes
Permitted: Yes
Wet Space: Yes
Addition: No
Conversion: No

16 Floor 2 - Porch

Dimensions: 23'8" x 8'2"
Area: 194 sq. ft
Counted as Living Area: No

Heated: No
Finished: Yes
Enclosed: No
Contiguous: Yes
Permitted: Yes
Wet Space: No
Addition: No
Conversion: No

17 Floor 2 - Bath

Dimensions: 6'8" x 9'3"
Area: 50 sq. ft
Counted as Living Area:
Yes

Heated: Yes
Finished: Yes
Enclosed: Yes
Contiguous:
Yes
Permitted: Yes
Wet Space: Yes
Addition: No
Conversion: No