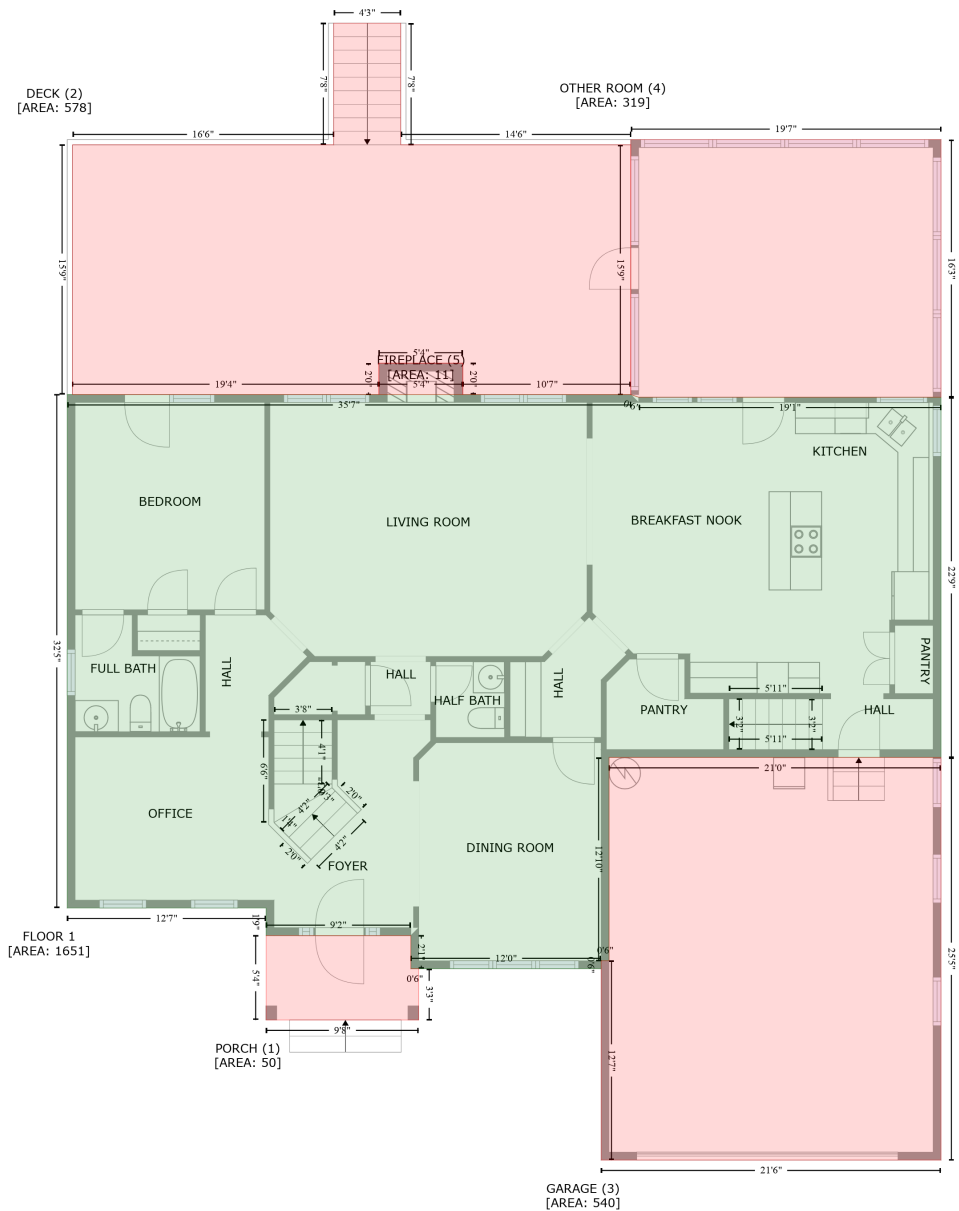


2504 Forest Lake Court, Wake Forest, Wake County, North Carolina, United States, 27587

Gross Living Area: 3608 sq. ft



Space	Area (sq. ft)	Calculation
FLOOR 1 (Living area)	1651	Coordinate Polygon Area Algorithm using inches $-((430.3 + 436.3) * (279.4 - 281.4) + (436.3 + 665.5) * (281.4 - 281.4) + (665.5 + 665.5) * (281.4 - 554.5) + (665.5 + 413.8) * (554.5 - 554.5) + (413.8 + 413.8) * (554.5 - 708.6) + (413.8 + 407.8) * (708.6 - 708.6) + (407.8 + 407.8) * (708.6 - 714.6) + (407.8 + 263.6) * (714.6 - 714.6) + (263.6 + 263.6) * (714.6 - 689.5) + (263.6 + 153.9) * (689.5 - 689.5) + (153.9 + 153.9) * (689.5 - 668.6) + (153.9 + 3.1) * (668.6 - 668.6) + (3.1 + 3.1) * (668.6 - 279.4) + (3.1 + 430.3) * (279.4 - 279.4)) * 0.5 * 0.00694$

2504 Forest Lake Court, Wake Forest, Wake County, North Carolina, United States, 27587

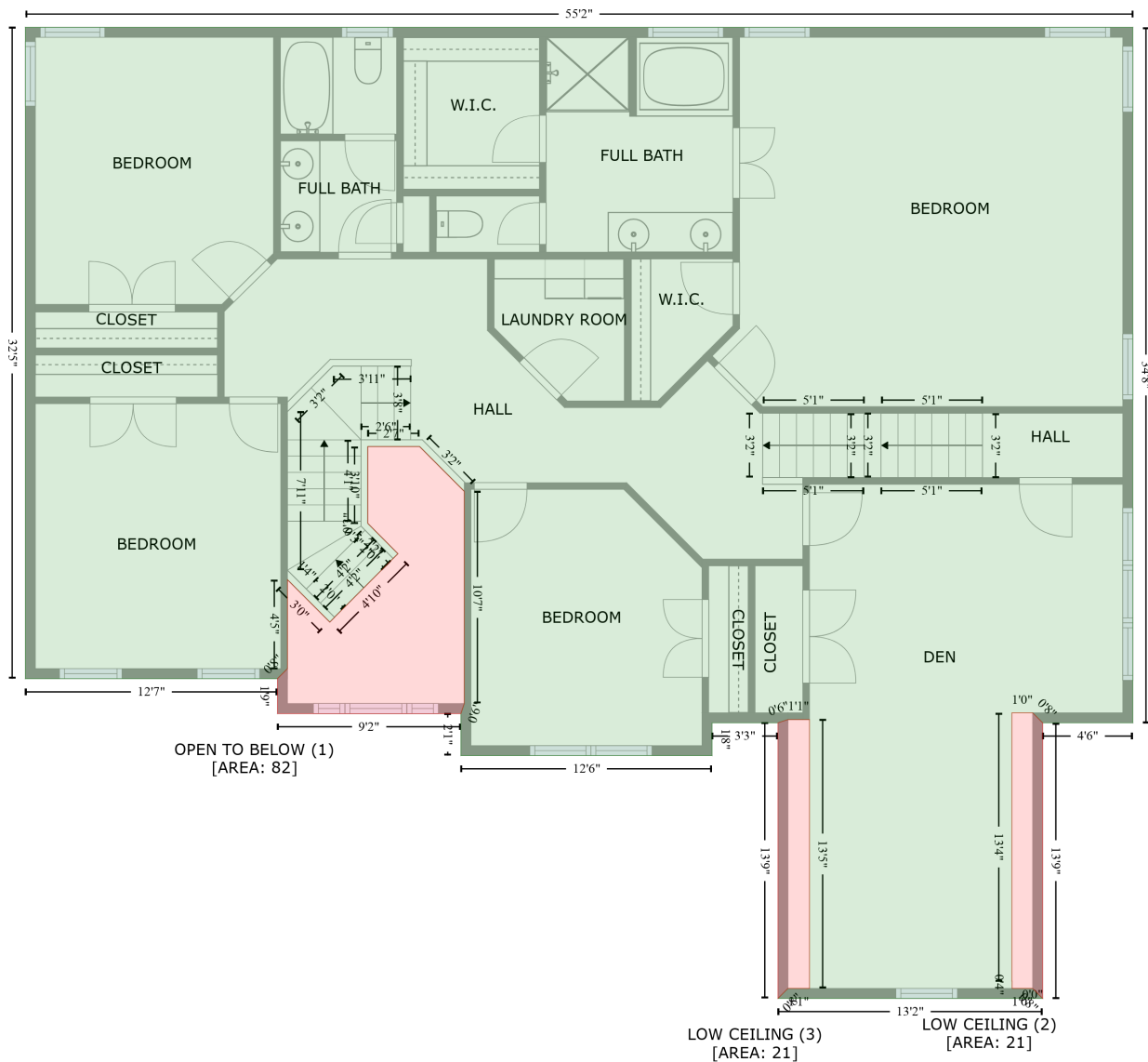
Gross Living Area: 3608 sq. ft

Space	Area (sq. ft)	Calculation <small>Coordinate Polygon Area Algorithm using inches</small>
PORCH (Non-living area)	50	$-\left((263.6 + 263.6) * (689.5 - 714.6) + (263.6 + 269.6) * (714.6 - 714.6) + (269.6 + 269.6) * (714.6 - 753.5) + (269.6 + 153.9) * (753.5 - 753.5) + (153.9 + 153.9) * (753.5 - 689.5) + (153.9 + 263.6) * (689.5 - 689.5)\right) * 0.5 * 0.00694$
DECK (Non-living area)	578	$-\left((255.9 + 255.9) * (-2.1 - 90.1) + (255.9 + 430.3) * (90.1 - 90.1) + (430.3 + 430.3) * (90.1 - 279.4) + (430.3 + 303.1) * (279.4 - 279.4) + (303.1 + 303.1) * (279.4 - 255.6) + (303.1 + 239.4) * (255.6 - 255.6) + (239.4 + 239.4) * (255.6 - 279.4) + (239.4 + 7.1) * (279.4 - 279.4) + (7.1 + 7.1) * (279.4 - 90.1) + (7.1 + 205.1) * (90.1 - 90.1) + (205.1 + 205.1) * (90.1 - -2.1) + (205.1 + 255.9) * (-2.1 - -2.1)\right) * 0.5 * 0.00694$
GARAGE (Non-living area)	540	$-\left((665.5 + 665.5) * (554.5 - 859.7) + (665.5 + 407.8) * (859.7 - 859.7) + (407.8 + 407.8) * (859.7 - 708.6) + (407.8 + 413.8) * (708.6 - 708.6) + (413.8 + 413.8) * (708.6 - 554.5) + (413.8 + 665.5) * (554.5 - 554.5)\right) * 0.5 * 0.00694$
OTHER ROOM (Non-living area)	319	$-\left((665.5 + 665.5) * (86.1 - 281.4) + (665.5 + 436.3) * (281.4 - 281.4) + (436.3 + 430.3) * (281.4 - 279.4) + (430.3 + 430.3) * (279.4 - 86.1) + (430.3 + 665.5) * (86.1 - 86.1)\right) * 0.5 * 0.00694$
FIREPLACE (Non-living area)	11	$-\left((303.1 + 303.1) * (255.6 - 279.4) + (303.1 + 239.4) * (279.4 - 279.4) + (239.4 + 239.4) * (279.4 - 255.6) + (239.4 + 303.1) * (255.6 - 255.6)\right) * 0.5 * 0.00694$

2504 Forest Lake Court, Wake Forest, Wake County, North Carolina, United States, 27587

Gross Living Area: 3608 sq. ft

FLOOR 2
[AREA: 1957]



Space

Area (sq. ft)

Calculation Coordinate Polygon Area Algorithm using inches

FLOOR 2
(Living area)

1957

$$\begin{aligned}
 & -((665.5 + 665.5) * (279.4 - 695) + (665.5 + 611.6) * (695 - 695) + (611.6 + 605.6) * (695 - 689) + \\
 & (605.6 + 593.2) * (689 - 689) + (593.2 + 593.2) * (689 - 849.3) + (593.2 + 593.3) * (849.3 - 849.3) \\
 & + (593.3 + 593.3) * (849.3 - 853.7) + (593.3 + 605.6) * (853.7 - 853.7) + (605.6 + 611.6) * (853.7 - \\
 & 859.7) + (611.6 + 453.3) * (859.7 - 859.7) + (453.3 + 459.3) * (859.7 - 853.7) + (459.3 + 472.1) * \\
 & (853.7 - 853.7) + (472.1 + 472.1) * (853.7 - 693) + (472.1 + 459.3) * (693 - 693) + (459.3 + 453.3) \\
 & * (693 - 695) + (453.3 + 413.8) * (695 - 695) + (413.8 + 413.8) * (695 - 714.6) + (413.8 + 263.6) * \\
 & (714.6 - 714.6) + (263.6 + 263.6) * (714.6 - 689.5) + (263.6 + 265.6) * (689.5 - 683.5) + (265.6 +
 \end{aligned}$$

2504 Forest Lake Court, Wake Forest, Wake County, North Carolina, United States, 27587

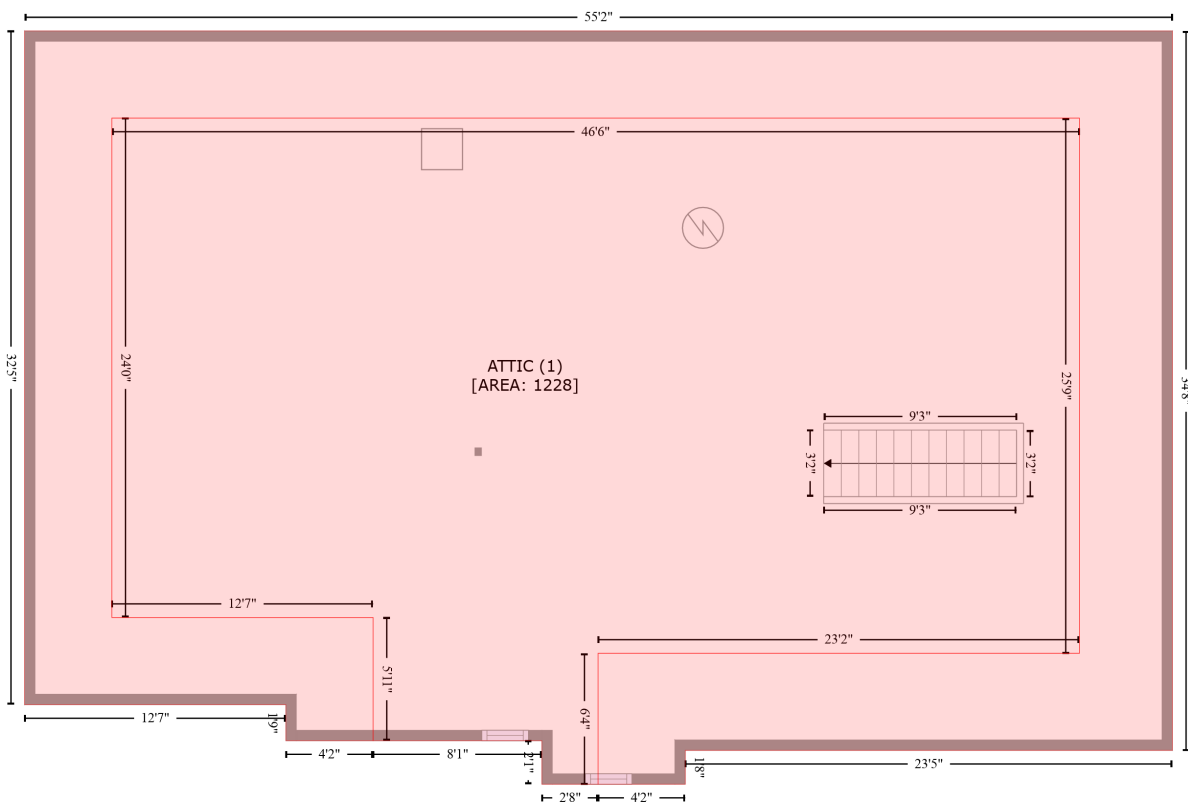
Gross Living Area: 3608 sq. ft

Space	Area (sq. ft)	Calculation <small>Coordinate Polygon Area Algorithm using inches</small>
		$265.6 * (683.5 - 556.7) + (265.6 + 238.9) * (556.7 - 529.9) + (238.9 + 207.9) * (529.9 - 529.9) + (207.9 + 207.9) * (529.9 - 575.8) + (207.9 + 225.9) * (575.8 - 594) + (225.9 + 185.2) * (594 - 634.8) + (185.2 + 159.9) * (634.8 - 609.4) + (159.9 + 159.9) * (609.4 - 662.6) + (159.9 + 153.9) * (662.6 - 668.6) + (153.9 + 3.1) * (668.6 - 668.6) + (3.1 + 3.1) * (668.6 - 279.4) + (3.1 + 665.5) * (279.4 - 279.4) * 0.5 * 0.00694$
OPEN TO BELOW (Non-living area)	82	$-((238.9 + 265.6) * (529.9 - 556.7) + (265.6 + 265.6) * (556.7 - 683.5) + (265.6 + 263.6) * (683.5 - 689.5) + (263.6 + 153.9) * (689.5 - 689.5) + (153.9 + 153.9) * (689.5 - 668.6) + (153.9 + 159.9) * (668.6 - 662.6) + (159.9 + 159.9) * (662.6 - 609.4) + (159.9 + 185.2) * (609.4 - 634.8) + (185.2 + 225.9) * (634.8 - 594) + (225.9 + 207.9) * (594 - 575.8) + (207.9 + 207.9) * (575.8 - 529.9) + (207.9 + 238.9) * (529.9 - 529.9)) * 0.5 * 0.00694$
LOW CEILING (Non-living area)	21	$-((605.6 + 611.6) * (689 - 695) + (611.6 + 611.6) * (695 - 859.7) + (611.6 + 605.6) * (859.7 - 853.7) + (605.6 + 593.3) * (853.7 - 853.7) + (593.3 + 593.3) * (853.7 - 849.3) + (593.3 + 593.2) * (849.3 - 849.3) + (593.2 + 593.2) * (849.3 - 689) + (593.2 + 605.6) * (689 - 689)) * 0.5 * 0.00694$
LOW CEILING (Non-living area)	21	$-((472.1 + 472.1) * (693 - 853.7) + (472.1 + 459.3) * (853.7 - 853.7) + (459.3 + 453.3) * (853.7 - 859.7) + (453.3 + 453.3) * (859.7 - 695) + (453.3 + 459.3) * (695 - 693) + (459.3 + 472.1) * (693 - 693)) * 0.5 * 0.00694$

2504 Forest Lake Court, Wake Forest, Wake County, North Carolina, United States, 27587

Gross Living Area: 3608 sq. ft

LOW CEILING (2)
[AREA: 661]



Space	Area (sq. ft)	Calculation <small>Coordinate Polygon Area Algorithm using inches</small>
ATTIC (Non-living area)	1228	$-\left((611.8 + 611.8) * (329.8 - 639) + (611.8 + 334) * (639 - 639) + (334 + 334) * (639 - 714.6) + (334 + 301.6) * (714.6 - 714.6) + (301.6 + 301.6) * (714.6 - 689.5) + (301.6 + 204.2) * (689.5 - 689.5) + (204.2 + 204.2) * (689.5 - 618.3) + (204.2 + 53.4) * (618.3 - 618.3) + (53.4 + 53.4) * (618.3 - 329.8) + (53.4 + 611.8) * (329.8 - 329.8)\right) * 0.5 * 0.00694$
LOW CEILING (Non-living area)	661	$-\left((665.5 + 665.5) * (279.4 - 695) + (665.5 + 384.4) * (695 - 695) + (384.4 + 384.4) * (695 - 714.6) + (384.4 + 334) * (714.6 - 714.6) + (334 + 334) * (714.6 - 639) + (334 + 611.8) * (639 - 639) + (611.8 + 611.8) * (639 - 329.8) + (611.8 + 53.4) * (329.8 - 329.8) + (53.4 + 53.4) * (329.8 - 618.3) + (53.4 + 204.2) * (618.3 - 618.3) + (204.2 + 204.2) * (618.3 - 689.5) + (204.2 + 153.9) * (689.5 - 689.5) + (153.9 + 153.9) * (689.5 - 668.6) + (153.9 + 3.1) * (668.6 - 668.6) + (3.1 + 3.1) * (668.6 - 279.4) + (3.1 + 665.5) * (279.4 - 279.4)\right) * 0.5 * 0.00694$