

Home report

14143 Manor Avenue, Dolton, Cook County, Illinois, United States, 60419



Property summary



1 Garages



3 Bedrooms



1 Bathrooms



1 Half baths



3 Floors



1,169 Gross living area sqft



2,370 Total sqft

Home report

14143 Manor Avenue, Dolton, Cook County, Illinois, United States, 60419



Room dimensions

Floor 1 Total sqft: 740 Living area: 0

#		Dimensions	sqft	Counted as living area
1	Bath	5'2" x 4'11"	24 sq. ft	No
2	Basement	28'5" x 24'8"	657 sq. ft	No

Home report

14143 Manor Avenue, Dolton, Cook County, Illinois, United States, 60419



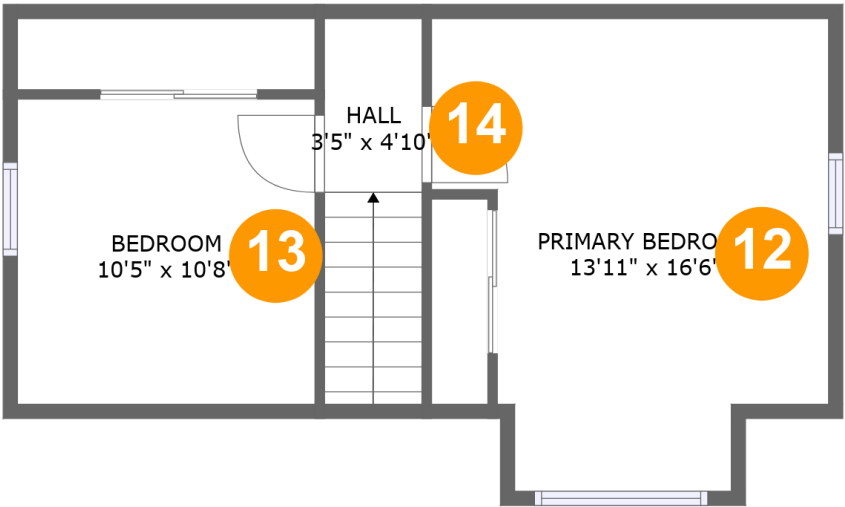
Room dimensions

Floor 2 Total sqft: 1177 Living area: 739

#		Dimensions	sqft	Counted as living area
3	Porch	5'4" x 3'8"	31 sq. ft	No
4	Garage	17'5" x 20'0"	351 sq. ft	No
5	Hall	8'8" x 2'6"	22 sq. ft	Yes
6	Kitchen	11'1" x 11'3"	123 sq. ft	Yes
7	Living Room	17'8" x 13'0"	196 sq. ft	Yes
8	Bedroom	8'11" x 11'4"	101 sq. ft	Yes
9	Deck	3'6" x 5'1"	18 sq. ft	No
10	Dining Area	10'5" x 11'11"	124 sq. ft	Yes
11	Bath	5'3" x 8'5"	39 sq. ft	Yes

Home report

14143 Manor Avenue, Dolton, Cook County, Illinois, United States, 60419



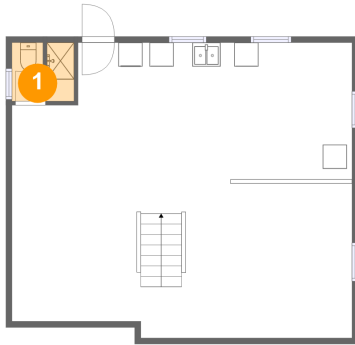
Room dimensions

Floor 3 Total sqft: 453 Living area: 430

#		Dimensions	sqft	Counted as living area
12	Primary Bedroom	13'11" x 16'6"	178 sq. ft	Yes
13	Bedroom	10'5" x 10'8"	111 sq. ft	Yes
14	Hall	3'5" x 4'10"	46 sq. ft	Yes

14143 Manor Avenue, Dolton, Cook County, Illinois, United States, 60419

1 Floor 1 - Bath



Dimensions: 5'2" x 4'11"
Area: 24 sq. ft
Counted as living area: No

Heated: Yes
Finished: No
Enclosed: Yes
Contiguous: Yes
Permitted: Yes
Wet space: Yes
Addition: No
Conversion: No

2 Floor 1 - Basement



Dimensions: 28'5" x 24'8"
Area: 657 sq. ft
Counted as living area: No

Heated: Yes
Finished: No
Enclosed: Yes
Contiguous: Yes
Permitted: Yes
Wet space: No
Addition: No
Conversion: No

3 Floor 2 - Porch



Dimensions: 5'4" x 3'8"
Area: 31 sq. ft
Counted as living area: No

Heated: No
Finished: Yes
Enclosed: No
Contiguous: Yes
Permitted: Yes
Wet space: No
Addition: No
Conversion: No

4 Floor 2 - Garage



Dimensions: 17'5" x 20'0"
Area: 351 sq. ft
Counted as living area: No

Heated: No
Finished: No
Enclosed: Yes
Contiguous: Yes
Permitted: Yes
Wet space: No
Addition: No
Conversion: No

5 Floor 2 - Hall



Dimensions: 8'8" x 2'6"
Area: 22 sq. ft
Counted as living area: Yes

Heated: Yes
Finished: Yes
Enclosed: Yes
Contiguous: Yes
Permitted: Yes
Wet space: No
Addition: No
Conversion: No

14143 Manor Avenue, Dolton, Cook County, Illinois, United States, 60419

6 Floor 2 - Kitchen



Dimensions: 11'1" x 11'3"
Area: 123 sq. ft
Counted as living area: Yes

Heated: Yes
Finished: Yes
Enclosed: Yes
Contiguous: Yes
Permitted: Yes
Wet space: No
Addition: No
Conversion: No

7 Floor 2 - Living Room



Dimensions: 17'8" x 13'0"
Area: 196 sq. ft
Counted as living area: Yes

Heated: Yes
Finished: Yes
Enclosed: Yes
Contiguous: Yes
Permitted: Yes
Wet space: No
Addition: No
Conversion: No

8 Floor 2 - Bedroom



Dimensions: 8'11" x 11'4"
Area: 101 sq. ft
Counted as living area: Yes

Heated: Yes
Finished: Yes
Enclosed: Yes
Contiguous: Yes
Permitted: Yes
Wet space: No
Addition: No
Conversion: No

9 Floor 2 - Deck



Dimensions: 3'6" x 5'1"
Area: 18 sq. ft
Counted as living area: No

Heated: No
Finished: Yes
Enclosed: No
Contiguous: Yes
Permitted: Yes
Wet space: No
Addition: No
Conversion: No

10 Floor 2 - Dining Area



Dimensions: 10'5" x 11'11"
Area: 124 sq. ft
Counted as living area: Yes

Heated: Yes
Finished: Yes
Enclosed: Yes
Contiguous: Yes
Permitted: Yes
Wet space: No
Addition: No
Conversion: No

11 Floor 2 - Bath

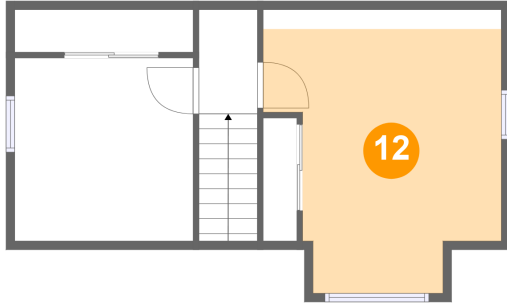


Dimensions: 5'3" x 8'5"
Area: 39 sq. ft
Counted as living area: Yes

Heated: Yes
Finished: Yes
Enclosed: Yes
Contiguous: Yes
Permitted: Yes
Wet space: Yes
Addition: No
Conversion: No

14143 Manor Avenue, Dolton, Cook County, Illinois, United States, 60419

12 Floor 3 - Primary Bedroom



Dimensions: 13'11" x 16'6"
Area: 178 sq. ft
Counted as living area: Yes

Heated: Yes
Finished: Yes
Enclosed: Yes
Contiguous: Yes
Permitted: Yes
Wet space: No
Addition: No
Conversion: No

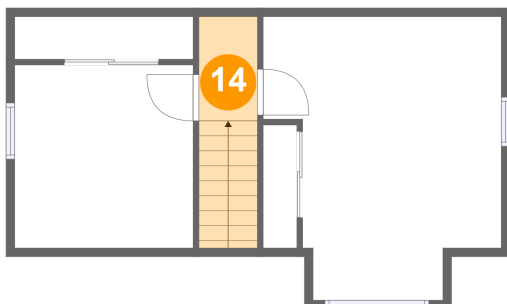
13 Floor 3 - Bedroom



Dimensions: 10'5" x 10'8"
Area: 111 sq. ft
Counted as living area: Yes

Heated: Yes
Finished: Yes
Enclosed: Yes
Contiguous: Yes
Permitted: Yes
Wet space: No
Addition: No
Conversion: No

14 Floor 3 - Hall



Dimensions: 3'5" x 4'10"
Area: 46 sq. ft
Counted as living area: Yes

Heated: Yes
Finished: Yes
Enclosed: Yes
Contiguous: Yes
Permitted: Yes
Wet space: No
Addition: No
Conversion: No