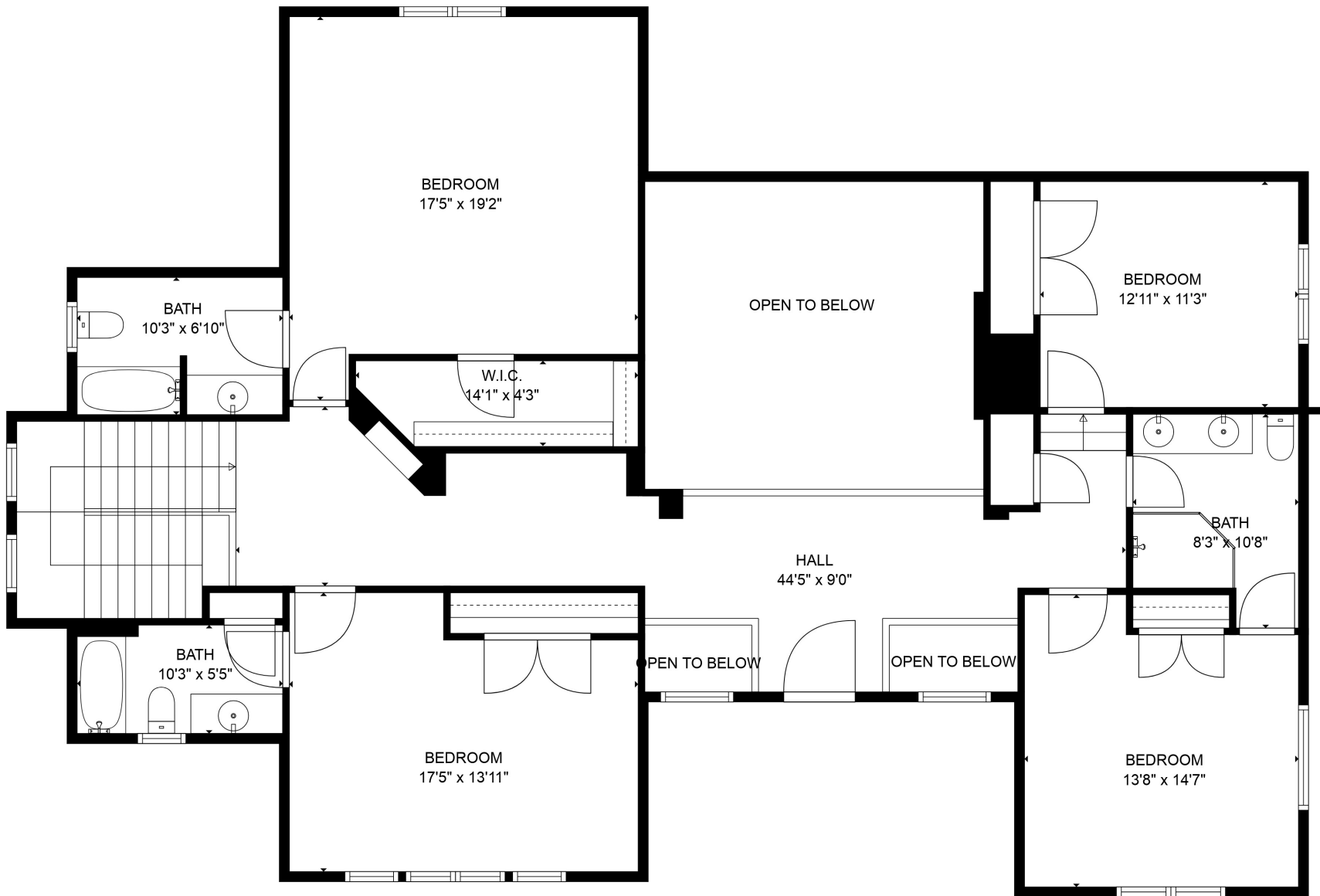


TOTAL: 6870 sq. ft
 BELOW GROUND: 2471 sq. ft, FLOOR 2: 2708 sq. ft, FLOOR 3: 1691 sq. ft
 EXCLUDED AREAS: ELECTRICAL ROOM: 194 sq. ft, STORAGE: 121 sq. ft, GARAGE: 838 sq. ft,
 OPEN TO BELOW: 299 sq. ft

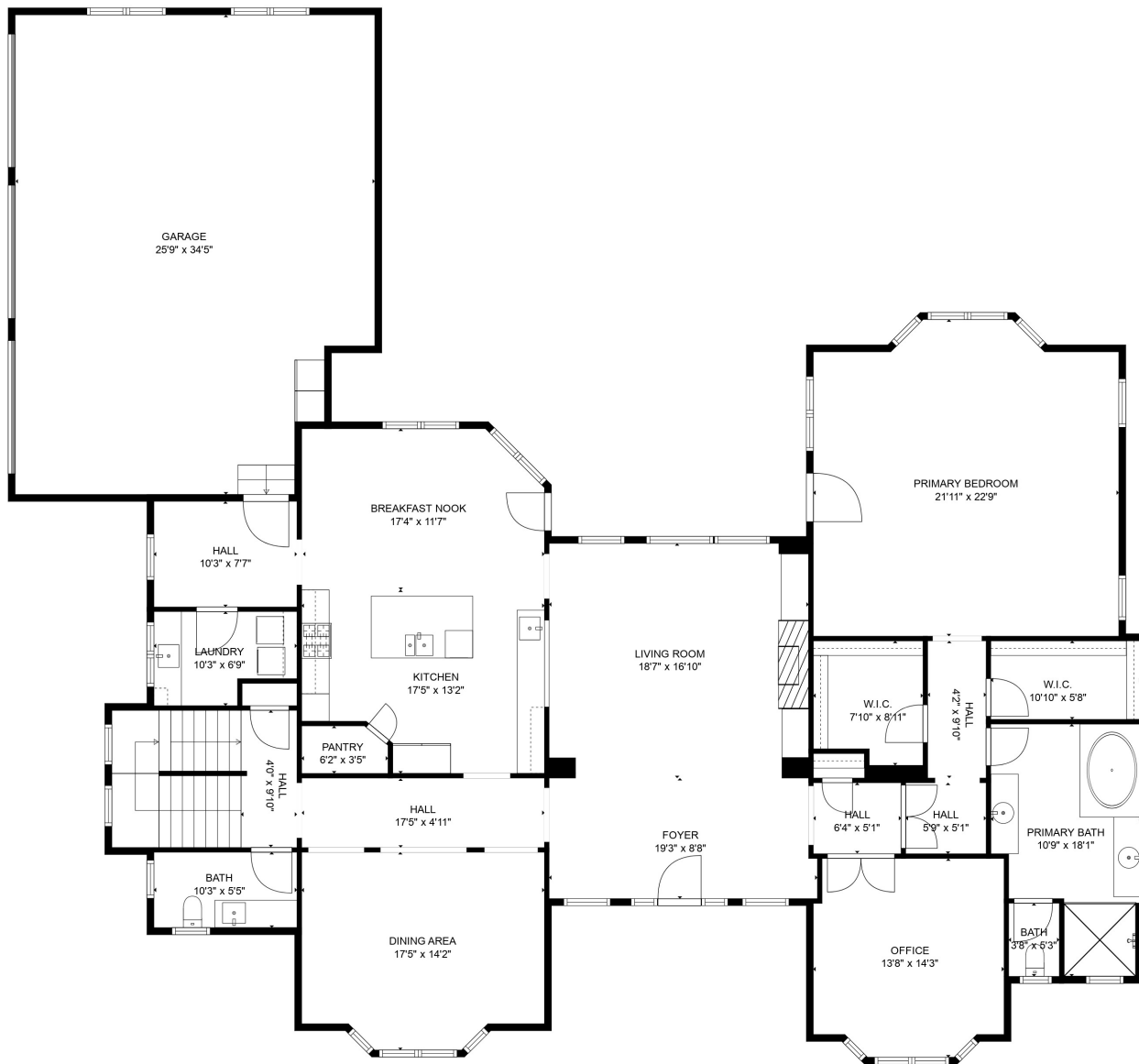
SIZES AND DIMENSIONS ARE APPROXIMATE, ACTUAL MAY VARY.



TOTAL: 6870 sq. ft

BELOW GROUND: 2471 sq. ft, FLOOR 2: 2708 sq. ft, FLOOR 3: 1691 sq. ft
 EXCLUDED AREAS: ELECTRICAL ROOM: 194 sq. ft, STORAGE: 121 sq. ft, GARAGE: 838 sq. ft,
 OPEN TO BELOW: 299 sq. ft

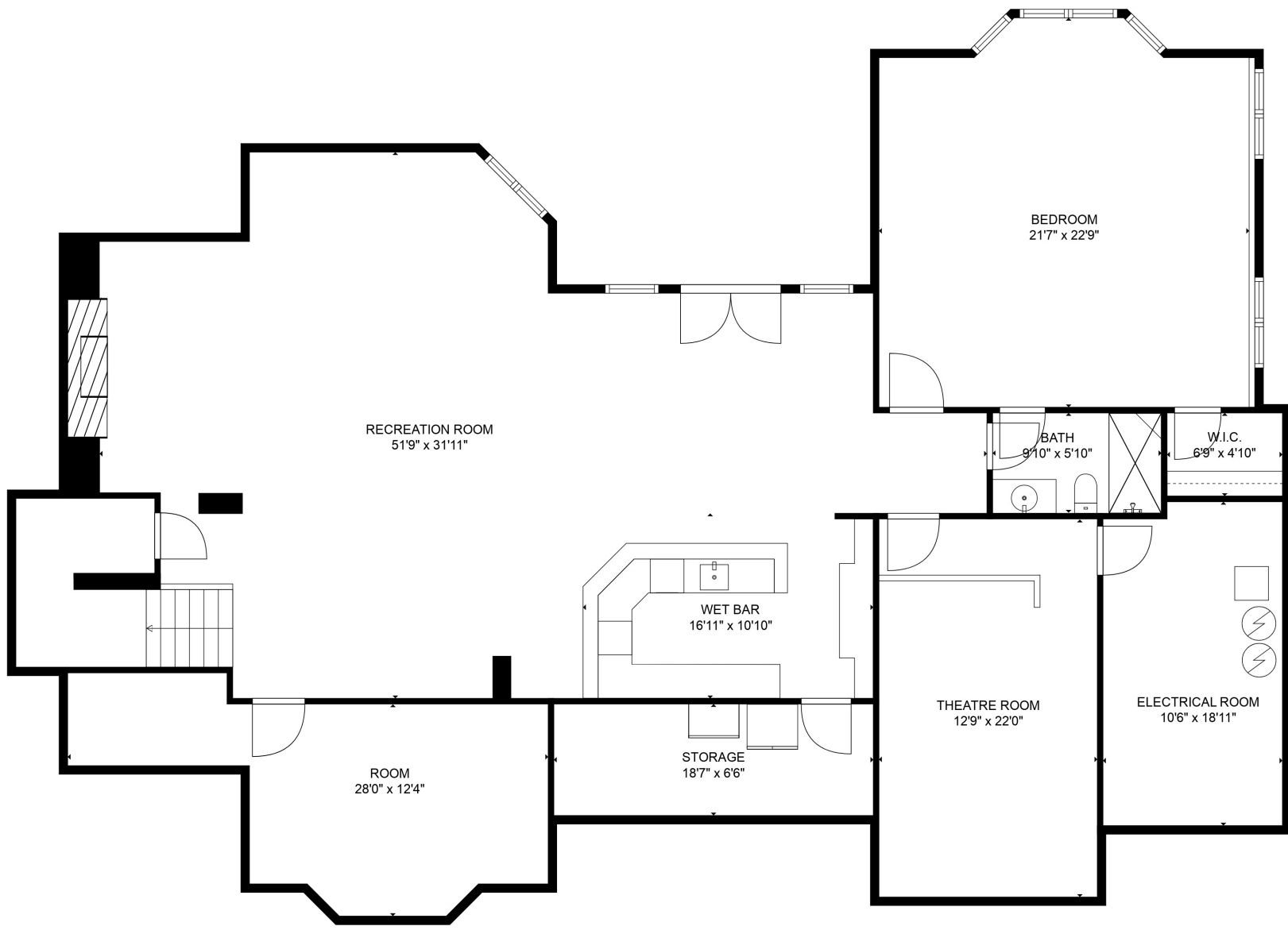
SIZES AND DIMENSIONS ARE APPROXIMATE, ACTUAL MAY VARY.



TOTAL: 6870 sq. ft

BELOW GROUND: 2471 sq. ft, FLOOR 2: 2708 sq. ft, FLOOR 3: 1691 sq. ft
 EXCLUDED AREAS: ELECTRICAL ROOM: 194 sq. ft, STORAGE: 121 sq. ft, GARAGE: 838 sq. ft,
 OPEN TO BELOW: 299 sq. ft

SIZES AND DIMENSIONS ARE APPROXIMATE, ACTUAL MAY VARY.



TOTAL: 6870 sq. ft
 BELOW GROUND: 2471 sq. ft, FLOOR 2: 2708 sq. ft, FLOOR 3: 1691 sq. ft
 EXCLUDED AREAS: ELECTRICAL ROOM: 194 sq. ft, STORAGE: 121 sq. ft, GARAGE: 838 sq. ft,
 OPEN TO BELOW: 299 sq. ft

SIZES AND DIMENSIONS ARE APPROXIMATE, ACTUAL MAY VARY.