

Home report

2170 Colonial Turnpike, Rocky Mount, Franklin County, Virginia,
United States, 24151

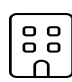


Total Area: 1436 sq. ft

Floor 1: 0 sq. ft, Floor 2: 1436 sq. ft

Excluded: Basement 707 sq. ft, Garage 693 sq. ft, Porch 166 sq. ft, Deck 84 sq. ft, Walls: 178 sq. ft

Property summary

**2**
Floors

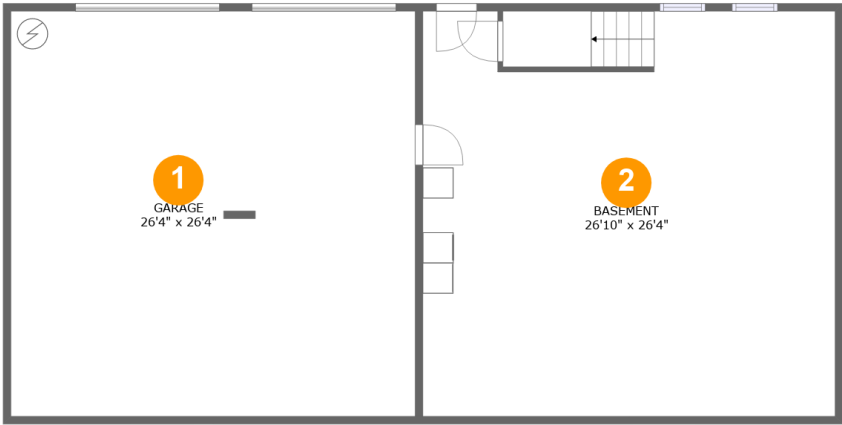
**3**
Bedrooms

**2**
Bathrooms

**1**
Garages

Home report

2170 Colonial Turnpike, Rocky Mount, Franklin County, Virginia,
United States, 24151



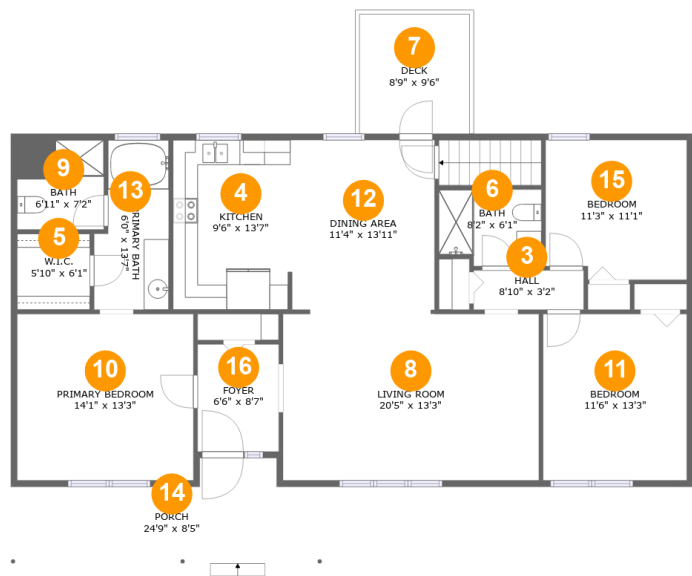
Room dimensions

Floor 1 Total:0sqft Excluded: 1400sqft

#		Max Dimensions	sqft	Included
1	Garage	26'4" x 26'4"	693 sq. ft	No
2	Basement	26'10" x 26'4"	702 sq. ft	No

Home report

2170 Colonial Turnpike, Rocky Mount, Franklin County, Virginia,
United States, 24151



Room dimensions

Floor 2 Total:1436sqft Excluded: 250sqft

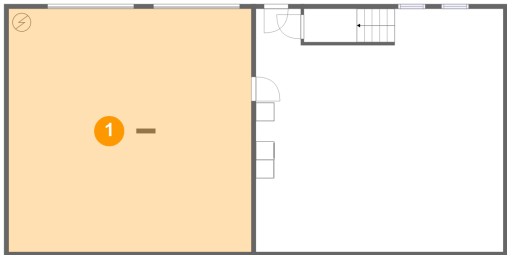
#		Max Dimensions	sqft	Included
3	Hall	8'10" x 3'2"	28 sq. ft	Yes
4	Kitchen	9'6" x 13'7"	128 sq. ft	Yes
5	W.I.C.	5'10" x 6'1"	35 sq. ft	Yes
6	Bath	8'2" x 6'1"	48 sq. ft	Yes
7	Deck	8'9" x 9'6"	84 sq. ft	No
8	Living Room	20'5" x 13'3"	272 sq. ft	Yes
9	Bath	6'11" x 7'2"	49 sq. ft	Yes
10	Primary Bedroom	14'1" x 13'3"	187 sq. ft	Yes
11	Bedroom	11'6" x 13'3"	152 sq. ft	Yes
12	Dining Area	11'4" x 13'11"	157 sq. ft	Yes
13	Primary Bath	6'0" x 13'7"	72 sq. ft	Yes

Home report

2170 Colonial Turnpike, Rocky Mount, Franklin County, Virginia,
United States, 24151

#		Max Dimensions	sqft	Included
14	Porch	24'9" x 8'5"	166 sq. ft	No
15	Bedroom	11'3" x 11'1"	122 sq. ft	Yes
16	Foyer	6'6" x 8'7"	56 sq. ft	Yes

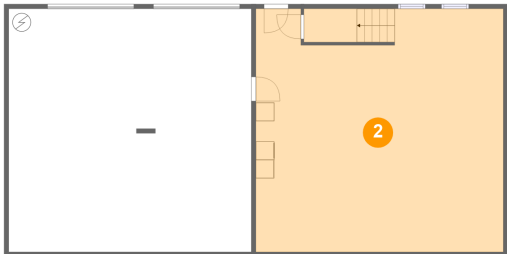
1 Floor 1 - Garage



Max Dimensions: 26'4" x 26'4"
Calculated Area: 693 sq. ft
Included: No

Heated: No
Finished: No
Enclosed: Yes
Contiguous: Yes
Permitted: Yes
Wet space: No
Addition: No
Conversion: No

2 Floor 1 - Basement

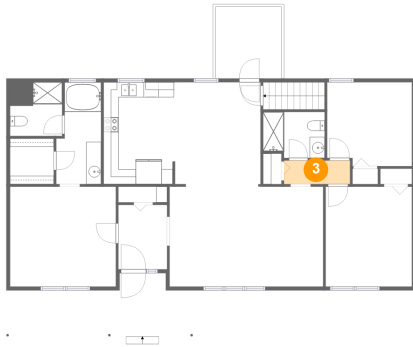


Max Dimensions: 26'10" x 26'4"
Calculated Area: 702 sq. ft
Included: No

Heated: Yes
Finished: No
Enclosed: Yes
Contiguous: Yes
Permitted: Yes
Wet space: No
Addition: No
Conversion: No

2170 Colonial Turnpike, Rocky Mount, Franklin County, Virginia,
United States, 24151

3 Floor 2 - Hall



Max Dimensions: 8'10" x 3'2"
Calculated Area: 28 sq. ft
Included: Yes

Heated: Yes
Finished: Yes
Enclosed: Yes
Contiguous: Yes
Permitted: Yes
Wet space: No
Addition: No
Conversion: No

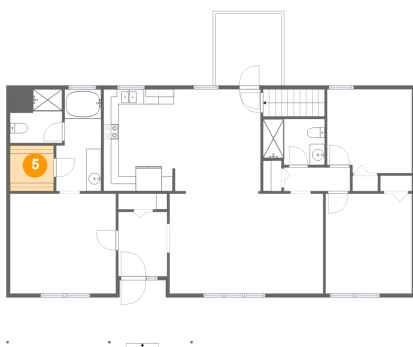
4 Floor 2 - Kitchen



Max Dimensions: 9'6" x 13'7"
Calculated Area: 128 sq. ft
Included: Yes

Heated: Yes
Finished: Yes
Enclosed: Yes
Contiguous: Yes
Permitted: Yes
Wet space: No
Addition: No
Conversion: No

5 Floor 2 - W.I.C.



Max Dimensions: 5'10" x 6'1"
Calculated Area: 35 sq. ft
Included: Yes

Heated: Yes
Finished: Yes
Enclosed: Yes
Contiguous: Yes
Permitted: Yes
Wet space: No
Addition: No
Conversion: No

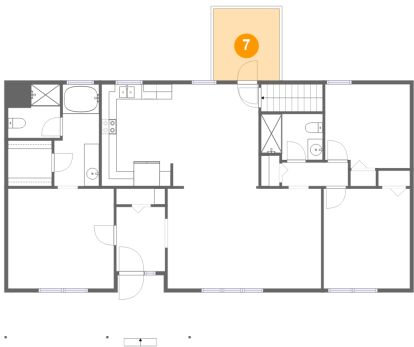
6 Floor 2 - Bath



Max Dimensions: 8'2" x 6'1"
Calculated Area: 48 sq. ft
Included: Yes

Heated: Yes
Finished: Yes
Enclosed: Yes
Contiguous: Yes
Permitted: Yes
Wet space: Yes
Addition: No
Conversion: No

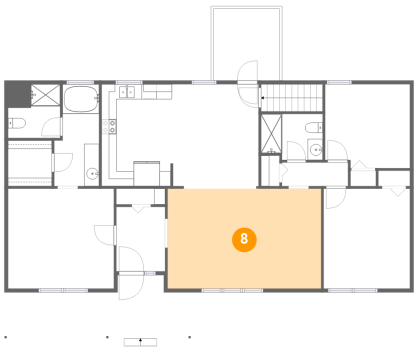
7 Floor 2 - Deck



Max Dimensions: 8'9" x 9'6"
Calculated Area: 84 sq. ft
Included: No

Heated: No
Finished: Yes
Enclosed: No
Contiguous: No
Permitted: Yes
Wet space: No
Addition: No
Conversion: No

8 Floor 2 - Living Room



Max Dimensions: 20'5" x 13'3"
Calculated Area: 272 sq. ft
Included: Yes

Heated: Yes
Finished: Yes
Enclosed: Yes
Contiguous: Yes
Permitted: Yes
Wet space: No
Addition: No
Conversion: No

9 Floor 2 - Bath



Max Dimensions: 6'11" x 7'2"
Calculated Area: 49 sq. ft
Included: Yes

Heated: Yes
Finished: Yes
Enclosed: Yes
Contiguous: Yes
Permitted: Yes
Wet space: Yes
Addition: No
Conversion: No

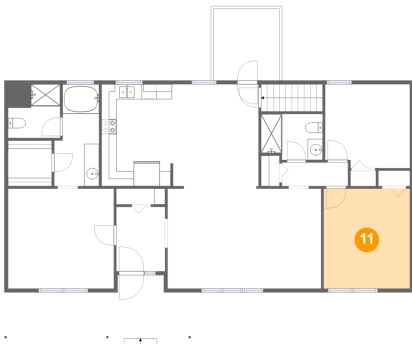
10 Floor 2 - Primary Bedroom



Max Dimensions: 14'1" x 13'3"
Calculated Area: 187 sq. ft
Included: Yes

Heated: Yes
Finished: Yes
Enclosed: Yes
Contiguous: Yes
Permitted: Yes
Wet space: No
Addition: No
Conversion: No

11 Floor 2 - Bedroom

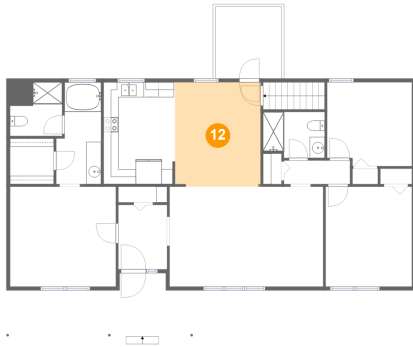


Max Dimensions: 11'6" x 13'3"
Calculated Area: 152 sq. ft
Included: Yes

Heated: Yes
Finished: Yes
Enclosed: Yes
Contiguous: Yes
Permitted: Yes
Wet space: No
Addition: No
Conversion: No

2170 Colonial Turnpike, Rocky Mount, Franklin County, Virginia,
United States, 24151

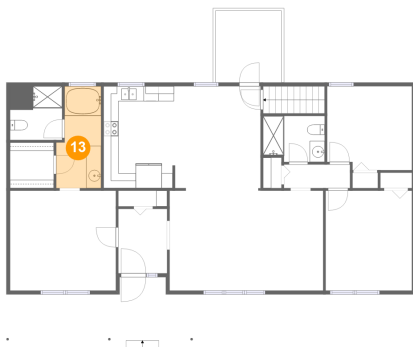
12 Floor 2 - Dining Area



Max Dimensions: 11'4" x 13'11"
Calculated Area: 157 sq. ft
Included: Yes

Heated: Yes
Finished: Yes
Enclosed: Yes
Contiguous: Yes
Permitted: Yes
Wet space: No
Addition: No
Conversion: No

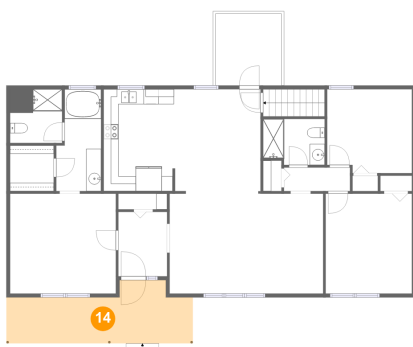
13 Floor 2 - Primary Bath



Max Dimensions: 6'0" x 13'7"
Calculated Area: 72 sq. ft
Included: Yes

Heated: Yes
Finished: Yes
Enclosed: Yes
Contiguous: Yes
Permitted: Yes
Wet space: Yes
Addition: No
Conversion: No

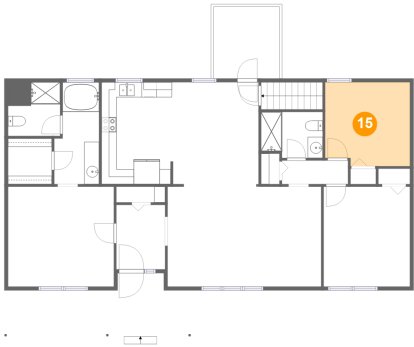
14 Floor 2 - Porch



Max Dimensions: 24'9" x 8'5"
Calculated Area: 166 sq. ft
Included: No

Heated: No
Finished: Yes
Enclosed: No
Contiguous: Yes
Permitted: Yes
Wet space: No
Addition: No
Conversion: No

15 Floor 2 - Bedroom



Max Dimensions: 11'3" x 11'1"
Calculated Area: 122 sq. ft
Included: Yes

Heated: Yes
Finished: Yes
Enclosed: Yes
Contiguous: Yes
Permitted: Yes
Wet space: No
Addition: No
Conversion: No

16 Floor 2 - Foyer



Max Dimensions: 6'6" x 8'7"
Calculated Area: 56 sq. ft
Included: Yes

Heated: Yes
Finished: Yes
Enclosed: Yes
Contiguous: Yes
Permitted: Yes
Wet space: No
Addition: No
Conversion: No