

Home report

2836 Fairway Forest Drive, Fairway Forest, Salem, Salem city,  
Virginia, United States, 24153



Total Area: 4531 sq. ft

Floor 1: 861 sq. ft, Floor 2: 2442 sq. ft, Floor 3: 1228 sq. ft

Excluded: Basement 485 sq. ft, Fireplace 13 sq. ft, Garage 502 sq. ft, Patio 2427 sq. ft, Embeddedwindow 11 sq. ft, Walls: 340 sq. ft

Property summary

 **3** Floors

 **5** Bedrooms

 **4** Bathrooms

Home report

**2836 Fairway Forest Drive, Fairway Forest, Salem, Salem city,  
Virginia, United States, 24153**



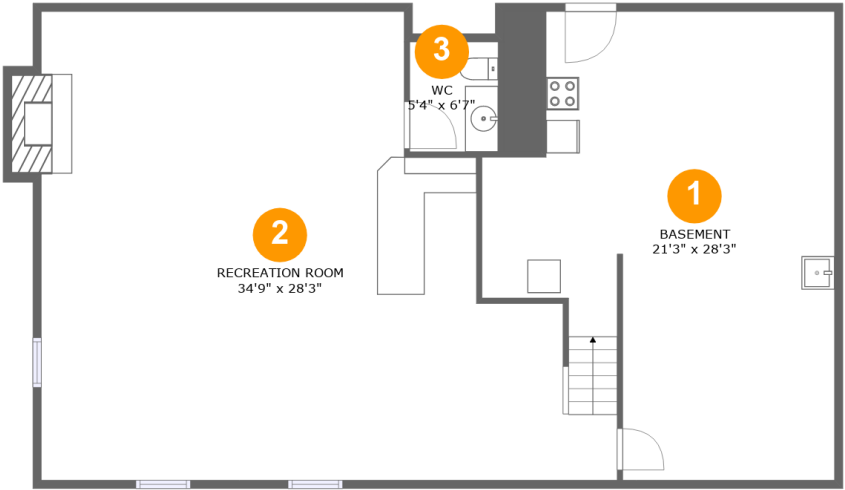
**2**  
Half baths



**1**  
Garages

Home report

2836 Fairway Forest Drive, Fairway Forest, Salem, Salem city,  
Virginia, United States, 24153



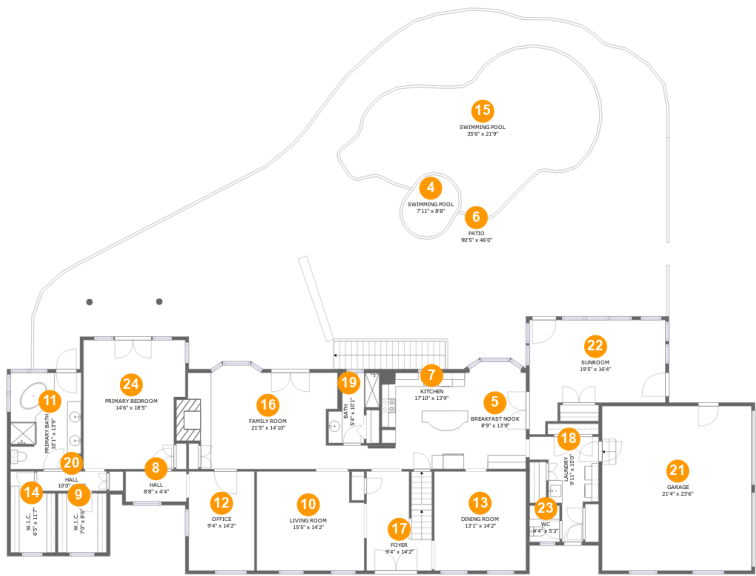
Room dimensions

Floor 1 Total:861sqft   Excluded: 498sqft

#		Max Dimensions	sqft	Included
1	Basement	21'3" x 28'3"	483 sq. ft	No
2	Recreation Room	34'9" x 28'3"	796 sq. ft	Yes
3	WC	5'4" x 6'7"	35 sq. ft	Yes

Home report

2836 Fairway Forest Drive, Fairway Forest, Salem, Salem city,  
Virginia, United States, 24153



Room dimensions

Floor 2 Total:2442sqft   Excluded: 2940sqft

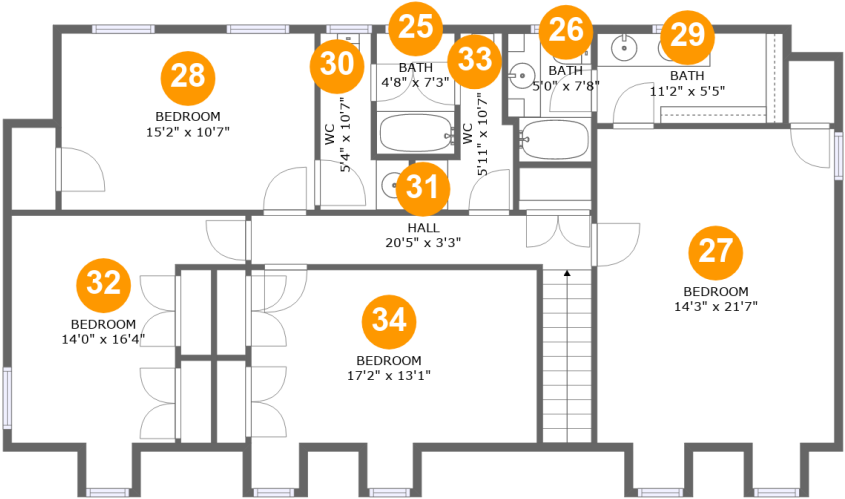
#		Max Dimensions	sqft	Included
4	Swimming Pool	7'11" x 8'8"	53 sq. ft	No
5	Breakfast Nook	8'9" x 13'9"	121 sq. ft	Yes
6	Patio	90'5" x 46'0"	3023 sq. ft	No
7	Kitchen	17'10" x 13'9"	182 sq. ft	Yes
8	Hall	8'8" x 4'4"	38 sq. ft	Yes
9	W.I.C.	7'0" x 8'6"	59 sq. ft	Yes
10	Living Room	15'5" x 14'2"	208 sq. ft	Yes
11	Primary Bath	10'1" x 13'9"	134 sq. ft	Yes
12	Office	9'4" x 14'2"	133 sq. ft	Yes
13	Dining Room	13'1" x 14'2"	186 sq. ft	Yes
14	W.I.C.	6'5" x 11'7"	65 sq. ft	Yes

## Home report

**2836 Fairway Forest Drive, Fairway Forest, Salem, Salem city,  
Virginia, United States, 24153**

#		Max Dimensions	sqft	Included
15	Swimming Pool	35'6" x 21'9"	533 sq. ft	No
16	Family Room	21'5" x 14'10"	296 sq. ft	Yes
17	Foyer	9'4" x 14'2"	130 sq. ft	Yes
18	Laundry	9'11" x 15'0"	93 sq. ft	Yes
19	Bath	5'4" x 10'1"	51 sq. ft	Yes
20	Hall	10'0" x 2'9"	28 sq. ft	Yes
21	Garage	21'4" x 23'6"	502 sq. ft	No
22	Sunroom	19'5" x 16'4"	245 sq. ft	Yes
23	WC	4'4" x 5'3"	23 sq. ft	Yes
24	Primary Bedroom	14'6" x 18'5"	252 sq. ft	Yes

2836 Fairway Forest Drive, Fairway Forest, Salem, Salem city,  
Virginia, United States, 24153



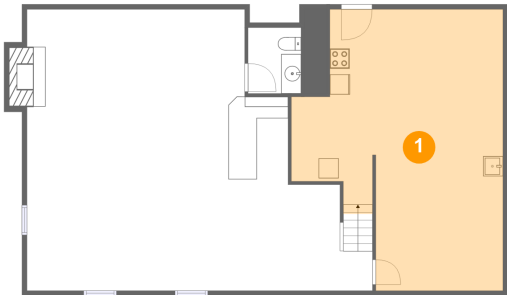
Room dimensions

Floor 3 Total:1228sqft   Excluded: 0sqft

#		Max Dimensions	sqft	Included
25	Bath	4'8" x 7'3"	34 sq. ft	Yes
26	Bath	5'0" x 7'8"	37 sq. ft	Yes
27	Bedroom	14'3" x 21'7"	284 sq. ft	Yes
28	Bedroom	15'2" x 10'7"	161 sq. ft	Yes
29	Bath	11'2" x 5'5"	60 sq. ft	Yes
30	WC	5'4" x 10'7"	39 sq. ft	Yes
31	Hall	20'5" x 3'3"	91 sq. ft	Yes
32	Bedroom	14'0" x 16'4"	154 sq. ft	Yes
33	WC	5'11" x 10'7"	38 sq. ft	Yes
34	Bedroom	17'2" x 13'1"	193 sq. ft	Yes

2836 Fairway Forest Drive, Fairway Forest, Salem, Salem city,  
Virginia, United States, 24153

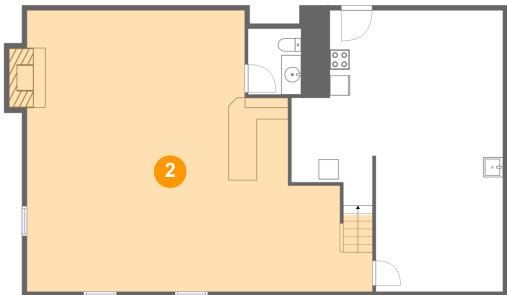
1 Floor 1 - Basement



Max Dimensions: 21'3" x 28'3"  
Calculated Area: 483 sq. ft  
Included: No

Heated: Yes  
Finished: No  
Enclosed: Yes  
Contiguous: Yes  
Permitted: Yes  
Wet space: No  
Addition: No  
Conversion: No

2 Floor 1 - Recreation Room

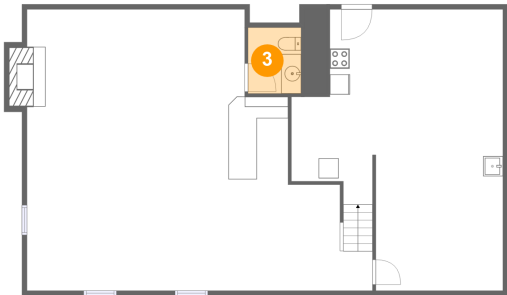


Max Dimensions: 34'9" x 28'3"  
Calculated Area: 796 sq. ft  
Included: No

Heated: Yes  
Finished: Yes  
Enclosed: Yes  
Contiguous: No  
Permitted: Yes  
Wet space: No  
Addition: No  
Conversion: No

2836 Fairway Forest Drive, Fairway Forest, Salem, Salem city,  
Virginia, United States, 24153

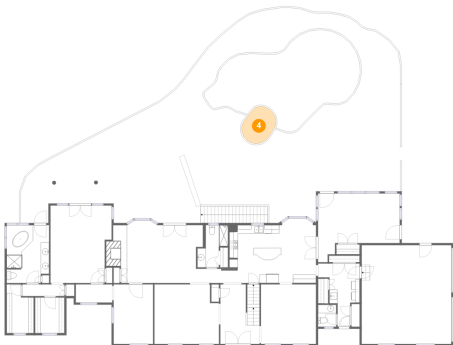
3 Floor 1 - WC



Max Dimensions: 5'4" x 6'7"  
Calculated Area: 35 sq. ft  
Included: No

Heated: Yes  
Finished: Yes  
Enclosed: Yes  
Contiguous: No  
Permitted: Yes  
Wet space: Yes  
Addition: No  
Conversion: No

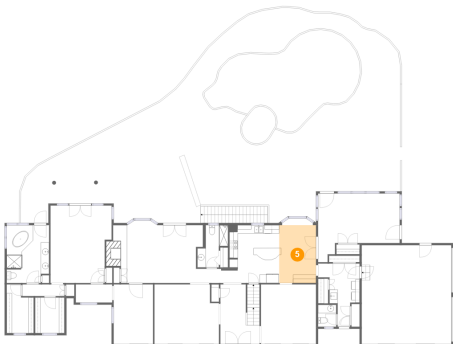
4 Floor 2 - Swimming Pool



Max Dimensions: 7'11" x 8'8"  
Calculated Area: 53 sq. ft  
Included: No

Heated: No  
Finished: No  
Enclosed: No  
Contiguous: Yes  
Permitted: No  
Wet space: No  
Addition: No  
Conversion: No

5 Floor 2 - Breakfast Nook



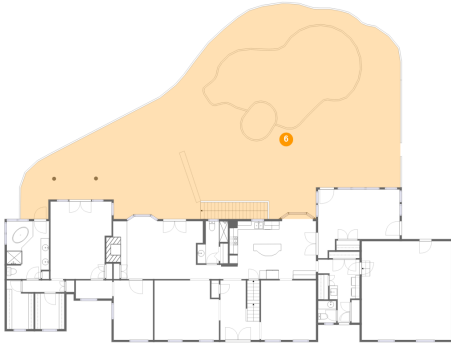
Max Dimensions: 8'9" x 13'9"  
Calculated Area: 121 sq. ft  
Included: Yes

Heated: Yes  
Finished: Yes  
Enclosed: Yes  
Contiguous: Yes  
Permitted: Yes  
Wet space: No  
Addition: No  
Conversion: No



2836 Fairway Forest Drive, Fairway Forest, Salem, Salem city,  
Virginia, United States, 24153

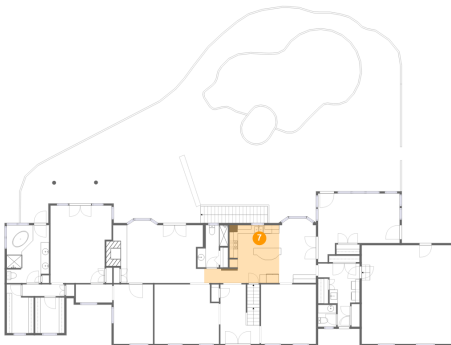
## 6 Floor 2 - Patio



Max Dimensions: 90'5" x 46'0"  
Calculated Area: 3023 sq. ft  
Included: No

Heated: No  
Finished: Yes  
Enclosed: No  
Contiguous: Yes  
Permitted: Yes  
Wet space: No  
Addition: No  
Conversion: No

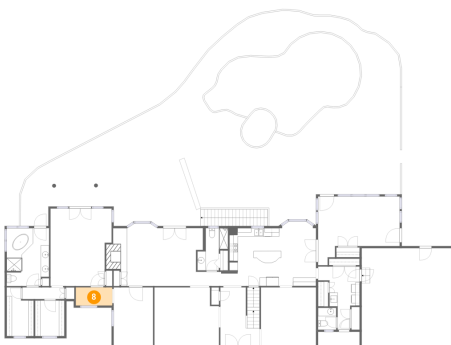
## 7 Floor 2 - Kitchen



Max Dimensions: 17'10" x 13'9"  
Calculated Area: 182 sq. ft  
Included: Yes

Heated: Yes  
Finished: Yes  
Enclosed: Yes  
Contiguous: Yes  
Permitted: Yes  
Wet space: No  
Addition: No  
Conversion: No

## 8 Floor 2 - Hall

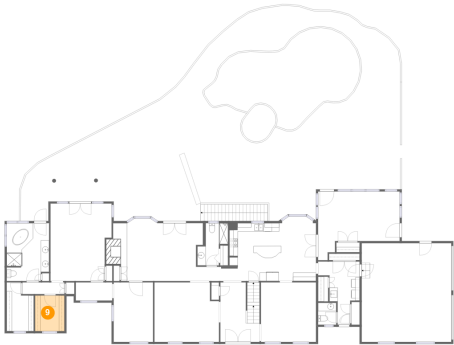


Max Dimensions: 8'8" x 4'4"  
Calculated Area: 38 sq. ft  
Included: Yes

Heated: Yes  
Finished: Yes  
Enclosed: Yes  
Contiguous: Yes  
Permitted: Yes  
Wet space: No  
Addition: No  
Conversion: No

2836 Fairway Forest Drive, Fairway Forest, Salem, Salem city,  
Virginia, United States, 24153

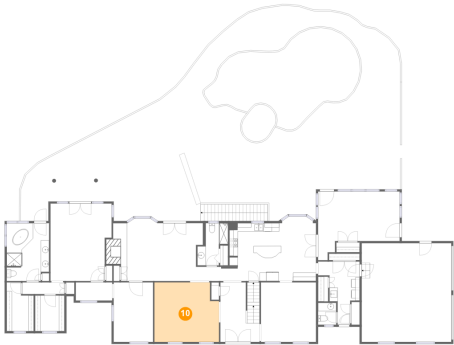
9 Floor 2 - W.I.C.



Max Dimensions: 7'0" x 8'6"  
Calculated Area: 59 sq. ft  
Included: Yes

Heated: Yes  
Finished: Yes  
Enclosed: Yes  
Contiguous: Yes  
Permitted: Yes  
Wet space: No  
Addition: No  
Conversion: No

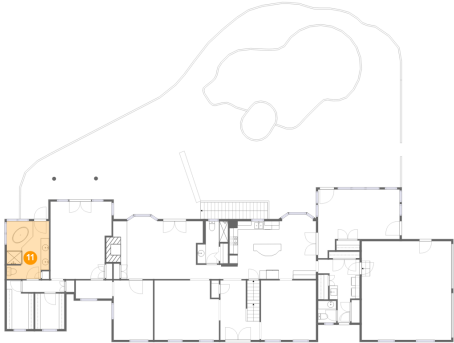
10 Floor 2 - Living Room



Max Dimensions: 15'5" x 14'2"  
Calculated Area: 208 sq. ft  
Included: Yes

Heated: Yes  
Finished: Yes  
Enclosed: Yes  
Contiguous: Yes  
Permitted: Yes  
Wet space: No  
Addition: No  
Conversion: No

11 Floor 2 - Primary Bath

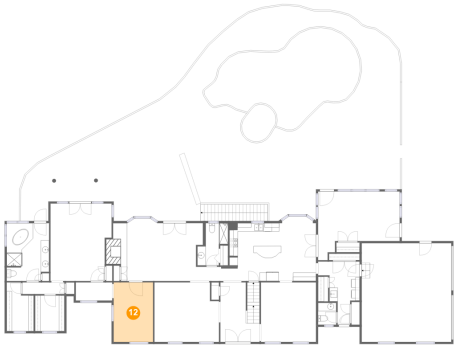


Max Dimensions: 10'1" x 13'9"  
Calculated Area: 134 sq. ft  
Included: Yes

Heated: Yes  
Finished: Yes  
Enclosed: Yes  
Contiguous: Yes  
Permitted: Yes  
Wet space: Yes  
Addition: No  
Conversion: No

2836 Fairway Forest Drive, Fairway Forest, Salem, Salem city,  
Virginia, United States, 24153

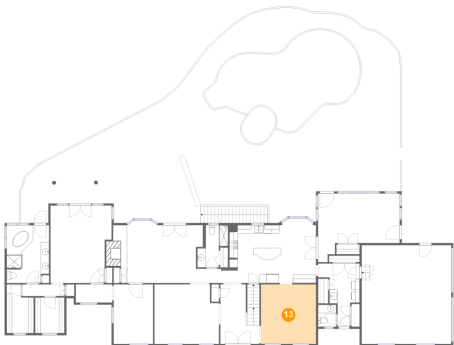
12 Floor 2 - Office



Max Dimensions: 9'4" x 14'2"  
Calculated Area: 133 sq. ft  
Included: Yes

Heated: Yes  
Finished: Yes  
Enclosed: Yes  
Contiguous: Yes  
Permitted: Yes  
Wet space: No  
Addition: No  
Conversion: No

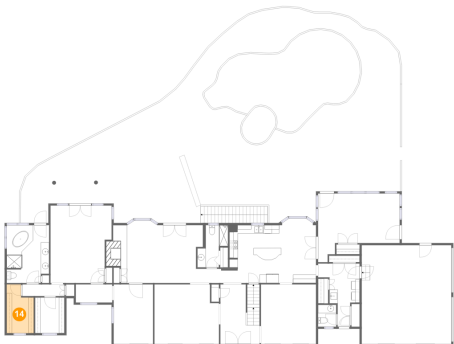
13 Floor 2 - Dining Room



Max Dimensions: 13'1" x 14'2"  
Calculated Area: 186 sq. ft  
Included: Yes

Heated: Yes  
Finished: Yes  
Enclosed: Yes  
Contiguous: Yes  
Permitted: Yes  
Wet space: No  
Addition: No  
Conversion: No

14 Floor 2 - W.I.C.

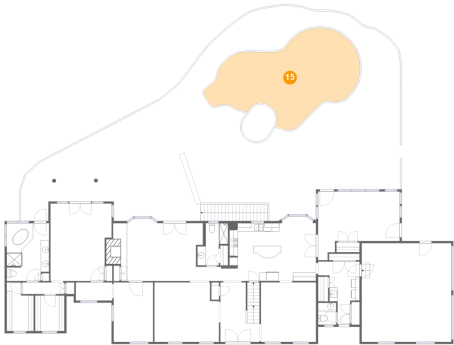


Max Dimensions: 6'5" x 11'7"  
Calculated Area: 65 sq. ft  
Included: Yes

Heated: Yes  
Finished: Yes  
Enclosed: Yes  
Contiguous: Yes  
Permitted: Yes  
Wet space: No  
Addition: No  
Conversion: No

2836 Fairway Forest Drive, Fairway Forest, Salem, Salem city,  
Virginia, United States, 24153

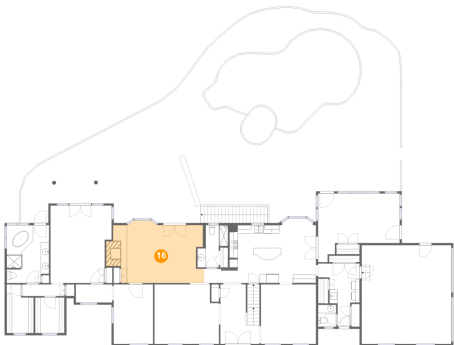
15 Floor 2 - Swimming Pool



Max Dimensions: 35'6" x 21'9"  
Calculated Area: 533 sq. ft  
Included: No

Heated: No  
Finished: No  
Enclosed: No  
Contiguous: Yes  
Permitted: No  
Wet space: No  
Addition: No  
Conversion: No

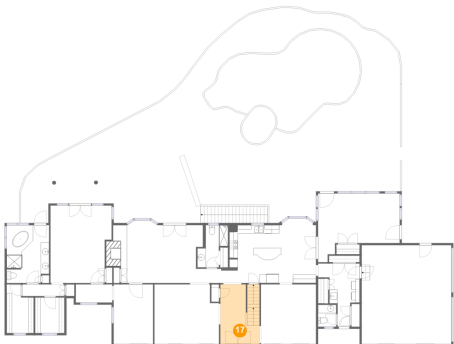
16 Floor 2 - Family Room



Max Dimensions: 21'5" x 14'10"  
Calculated Area: 296 sq. ft  
Included: Yes

Heated: Yes  
Finished: Yes  
Enclosed: Yes  
Contiguous: Yes  
Permitted: Yes  
Wet space: No  
Addition: No  
Conversion: No

17 Floor 2 - Foyer

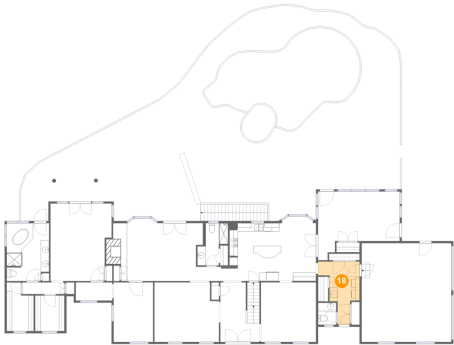


Max Dimensions: 9'4" x 14'2"  
Calculated Area: 130 sq. ft  
Included: Yes

Heated: Yes  
Finished: Yes  
Enclosed: Yes  
Contiguous: Yes  
Permitted: Yes  
Wet space: No  
Addition: No  
Conversion: No

2836 Fairway Forest Drive, Fairway Forest, Salem, Salem city,  
Virginia, United States, 24153

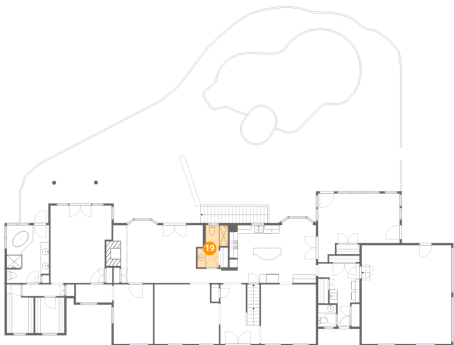
18 Floor 2 - Laundry



Max Dimensions: 9'11" x 15'0"  
Calculated Area: 93 sq. ft  
Included: Yes

Heated: Yes  
Finished: Yes  
Enclosed: Yes  
Contiguous: Yes  
Permitted: Yes  
Wet space: No  
Addition: No  
Conversion: No

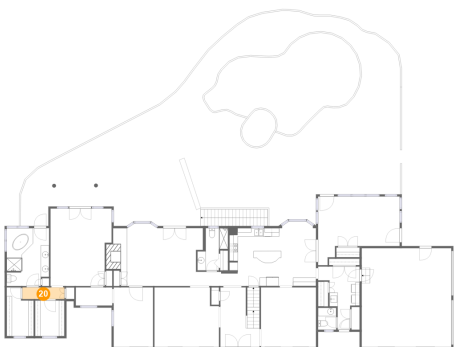
19 Floor 2 - Bath



Max Dimensions: 5'4" x 10'1"  
Calculated Area: 51 sq. ft  
Included: Yes

Heated: Yes  
Finished: Yes  
Enclosed: Yes  
Contiguous: Yes  
Permitted: Yes  
Wet space: Yes  
Addition: No  
Conversion: No

20 Floor 2 - Hall

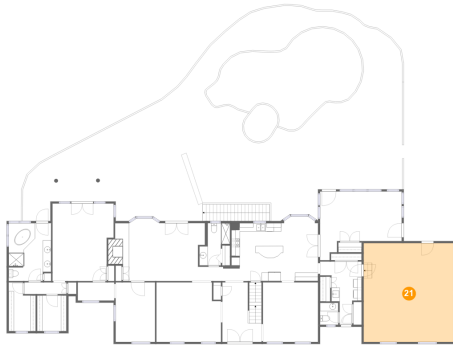


Max Dimensions: 10'0" x 2'9"  
Calculated Area: 28 sq. ft  
Included: Yes

Heated: Yes  
Finished: Yes  
Enclosed: Yes  
Contiguous: Yes  
Permitted: Yes  
Wet space: No  
Addition: No  
Conversion: No

2836 Fairway Forest Drive, Fairway Forest, Salem, Salem city,  
Virginia, United States, 24153

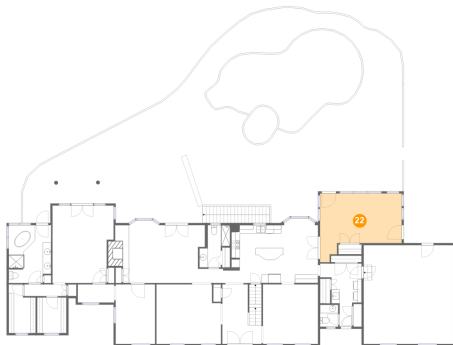
## 21 Floor 2 - Garage



Max Dimensions: 21'4" x 23'6"  
Calculated Area: 502 sq. ft  
Included: No

Heated: No  
Finished: No  
Enclosed: Yes  
Contiguous: Yes  
Permitted: Yes  
Wet space: No  
Addition: No  
Conversion: No

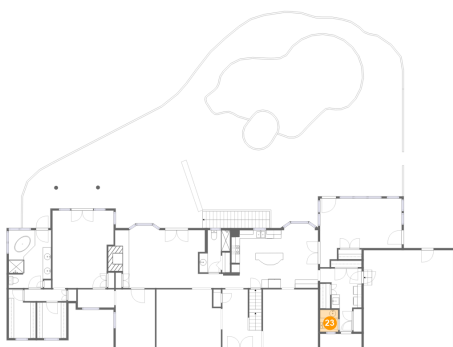
## 22 Floor 2 - Sunroom



Max Dimensions: 19'5" x 16'4"  
Calculated Area: 245 sq. ft  
Included: Yes

Heated: Yes  
Finished: Yes  
Enclosed: Yes  
Contiguous: Yes  
Permitted: Yes  
Wet space: No  
Addition: No  
Conversion: No

## 23 Floor 2 - WC

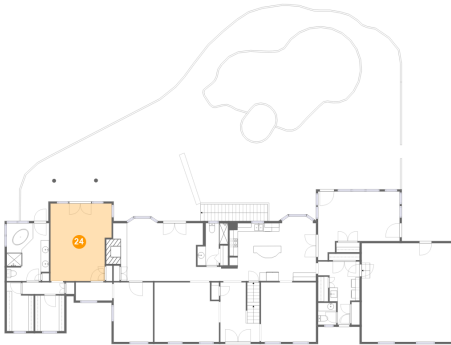


Max Dimensions: 4'4" x 5'3"  
Calculated Area: 23 sq. ft  
Included: Yes

Heated: Yes  
Finished: Yes  
Enclosed: Yes  
Contiguous: Yes  
Permitted: Yes  
Wet space: Yes  
Addition: No  
Conversion: No

2836 Fairway Forest Drive, Fairway Forest, Salem, Salem city,  
Virginia, United States, 24153

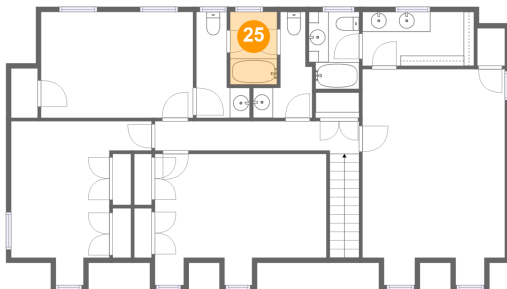
## 24 Floor 2 - Primary Bedroom



Max Dimensions: 14'6" x 18'5"  
Calculated Area: 252 sq. ft  
Included: Yes

Heated: Yes  
Finished: Yes  
Enclosed: Yes  
Contiguous: Yes  
Permitted: Yes  
Wet space: No  
Addition: No  
Conversion: No

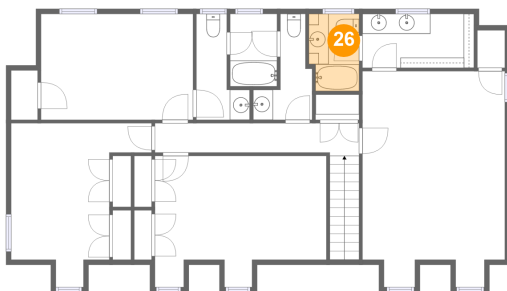
## 25 Floor 3 - Bath



Max Dimensions: 4'8" x 7'3"  
Calculated Area: 34 sq. ft  
Included: Yes

Heated: Yes  
Finished: Yes  
Enclosed: Yes  
Contiguous: Yes  
Permitted: Yes  
Wet space: Yes  
Addition: No  
Conversion: No

## 26 Floor 3 - Bath



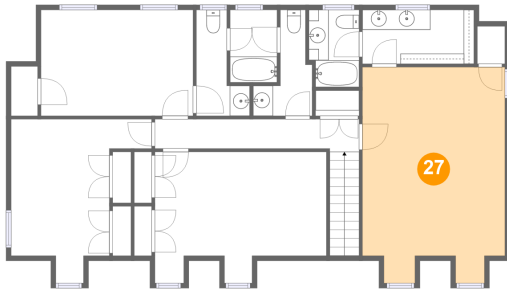
Max Dimensions: 5'0" x 7'8"  
Calculated Area: 37 sq. ft  
Included: Yes

Heated: Yes  
Finished: Yes  
Enclosed: Yes  
Contiguous: Yes  
Permitted: Yes  
Wet space: Yes  
Addition: No  
Conversion: No

## Home report

2836 Fairway Forest Drive, Fairway Forest, Salem, Salem city,  
Virginia, United States, 24153

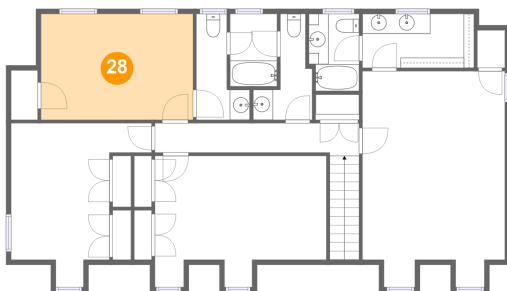
### 27 Floor 3 - Bedroom



Max Dimensions: 14'3" x 21'7"  
Calculated Area: 284 sq. ft  
Included: Yes

Heated: Yes  
Finished: Yes  
Enclosed: Yes  
Contiguous: Yes  
Permitted: Yes  
Wet space: No  
Addition: No  
Conversion: No

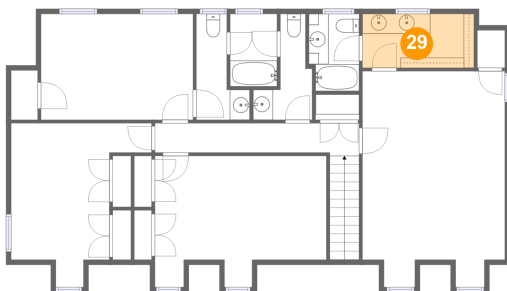
### 28 Floor 3 - Bedroom



Max Dimensions: 15'2" x 10'7"  
Calculated Area: 161 sq. ft  
Included: Yes

Heated: Yes  
Finished: Yes  
Enclosed: Yes  
Contiguous: Yes  
Permitted: Yes  
Wet space: No  
Addition: No  
Conversion: No

### 29 Floor 3 - Bath



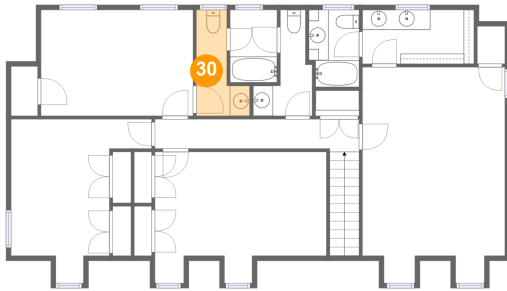
Max Dimensions: 11'2" x 5'5"  
Calculated Area: 60 sq. ft  
Included: Yes

Heated: Yes  
Finished: Yes  
Enclosed: Yes  
Contiguous: Yes  
Permitted: Yes  
Wet space: Yes  
Addition: No  
Conversion: No



2836 Fairway Forest Drive, Fairway Forest, Salem, Salem city,  
Virginia, United States, 24153

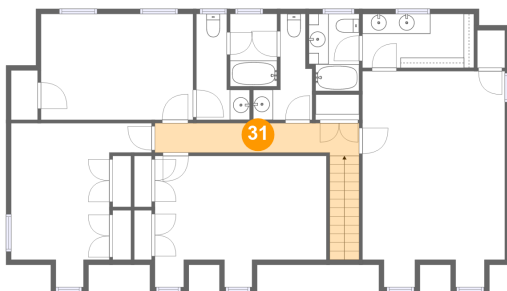
### 30 Floor 3 - WC



Max Dimensions: 5'4" x 10'7"  
Calculated Area: 39 sq. ft  
Included: Yes

Heated: Yes  
Finished: Yes  
Enclosed: Yes  
Contiguous: Yes  
Permitted: Yes  
Wet space: Yes  
Addition: No  
Conversion: No

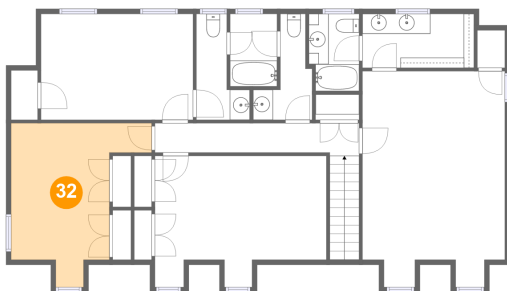
### 31 Floor 3 - Hall



Max Dimensions: 20'5" x 3'3"  
Calculated Area: 91 sq. ft  
Included: Yes

Heated: Yes  
Finished: Yes  
Enclosed: Yes  
Contiguous: Yes  
Permitted: Yes  
Wet space: No  
Addition: No  
Conversion: No

### 32 Floor 3 - Bedroom

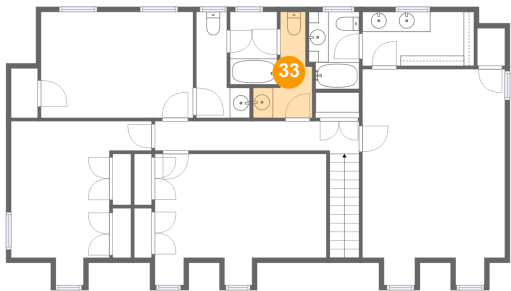


Max Dimensions: 14'0" x 16'4"  
Calculated Area: 154 sq. ft  
Included: Yes

Heated: Yes  
Finished: Yes  
Enclosed: Yes  
Contiguous: Yes  
Permitted: Yes  
Wet space: No  
Addition: No  
Conversion: No

2836 Fairway Forest Drive, Fairway Forest, Salem, Salem city,  
Virginia, United States, 24153

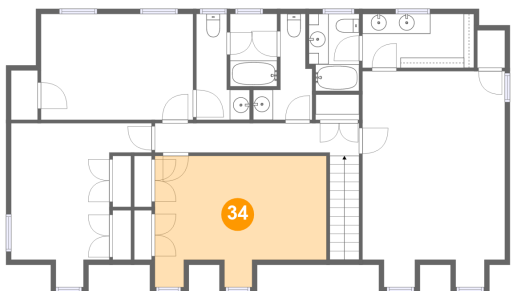
33 Floor 3 - WC



Max Dimensions: 5'11" x 10'7"  
Calculated Area: 38 sq. ft  
Included: Yes

Heated: Yes  
Finished: Yes  
Enclosed: Yes  
Contiguous: Yes  
Permitted: Yes  
Wet space: No  
Addition: No  
Conversion: No

34 Floor 3 - Bedroom



Max Dimensions: 17'2" x 13'1"  
Calculated Area: 193 sq. ft  
Included: Yes

Heated: Yes  
Finished: Yes  
Enclosed: Yes  
Contiguous: Yes  
Permitted: Yes  
Wet space: No  
Addition: No  
Conversion: No