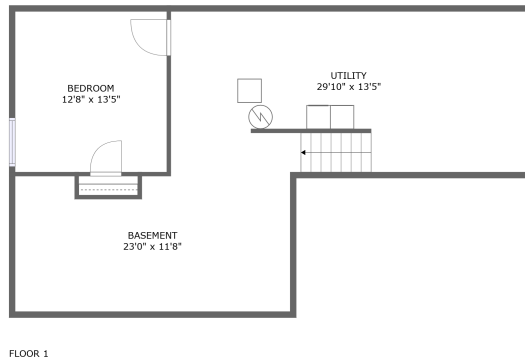
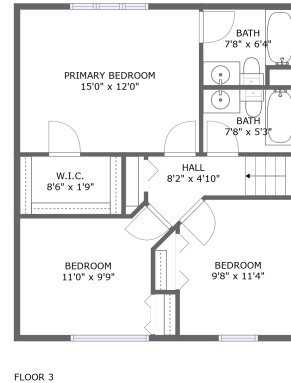
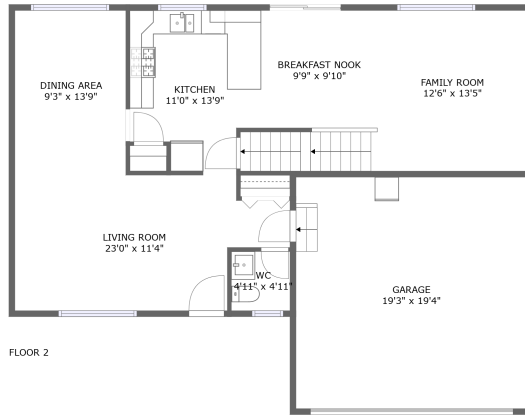



# 313 Persimmon Lane, Oswego, Kendall County, Illinois, United States, 60543



## Property summary

 **1** Garages

 **4** Bedrooms

 **2** Bathrooms

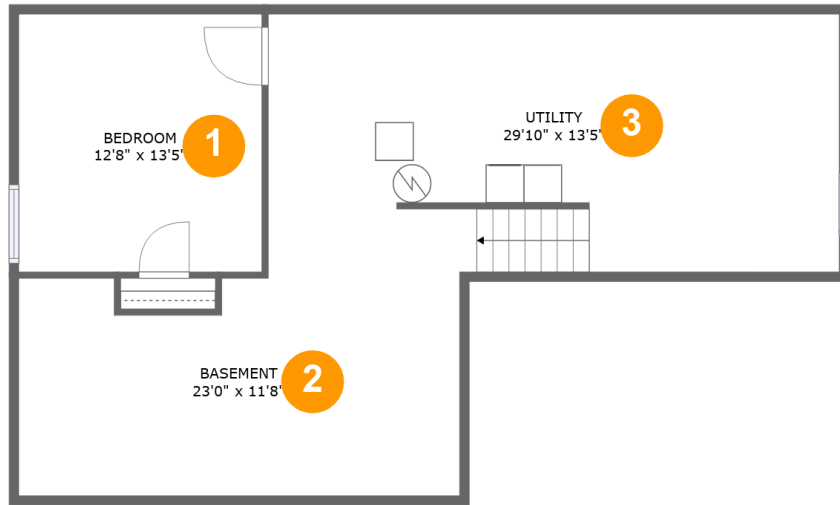
 **1** Half baths

 **3** Floors

 **1,593** Gross living area sqft

 **2,905** Total sqft

**313 Persimmon Lane, Oswego, Kendall County, Illinois, United States, 60543**



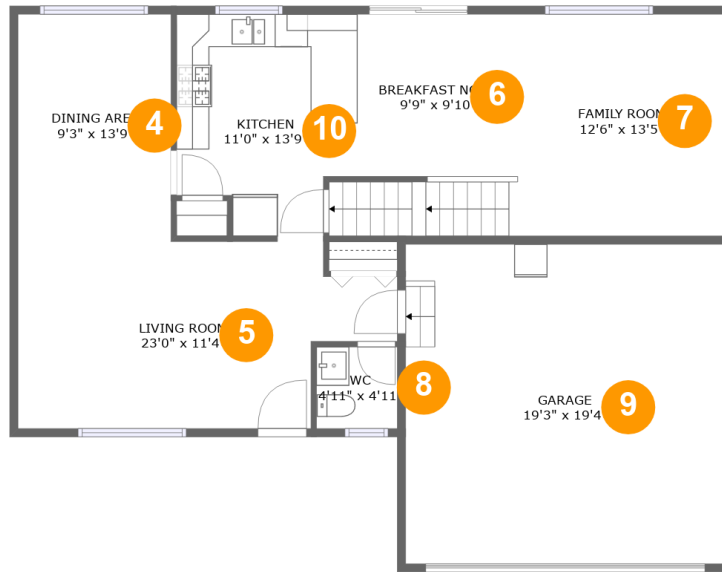
**Room dimensions**

**Floor 1**

**Total sqft: 914 Living area: 0**

#		Dimensions	sqft	Counted as living area
1	Bedroom	12'8" x 13'5"	171 sq. ft	No
2	Basement	23'0" x 11'8"	254 sq. ft	No
3	Utility	29'10" x 13'5"	401 sq. ft	No

**313 Persimmon Lane, Oswego, Kendall County, Illinois, United States, 60543**



**Room dimensions**

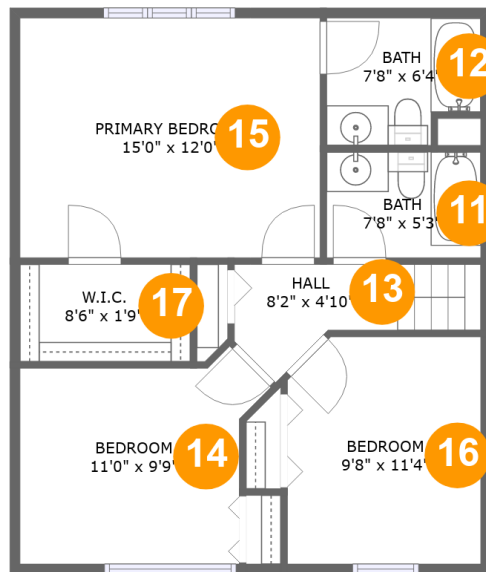
**Floor 2**

**Total sqft: 1312**

**Living area: 914**

#		Dimensions	sqft	Counted as living area
4	Dining Room	9'3" x 13'9"	128 sq. ft	Yes
5	Living Room	23'0" x 11'4"	224 sq. ft	Yes
6	Nook	9'9" x 9'10"	135 sq. ft	Yes
7	Living Room	12'6" x 13'5"	168 sq. ft	Yes
8	Bath	4'11" x 4'11"	24 sq. ft	Yes
9	Garage	19'3" x 19'4"	375 sq. ft	No
10	Kitchen	11'0" x 13'9"	133 sq. ft	Yes

# 313 Persimmon Lane, Oswego, Kendall County, Illinois, United States, 60543



## Room dimensions

Floor 3

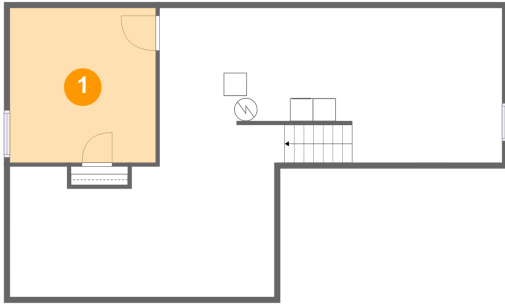
Total sqft: 679

Living area: 679

#		Dimensions	sqft	Counted as living area
11	Bath	7'8" x 5'3"	41 sq. ft	Yes
12	Bath	7'8" x 6'4"	45 sq. ft	Yes
13	Hall	8'2" x 4'10"	47 sq. ft	Yes
14	Bedroom	11'0" x 9'9"	111 sq. ft	Yes
15	Bedroom	15'0" x 12'0"	179 sq. ft	Yes
16	Bedroom	9'8" x 11'4"	107 sq. ft	Yes
17	Cl	8'6" x 1'9"	41 sq. ft	Yes

# 313 Persimmon Lane, Oswego, Kendall County, Illinois, United States, 60543

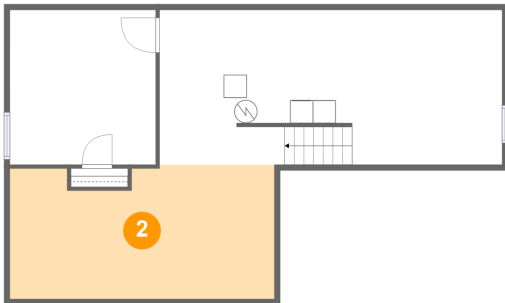
## 1 Floor 1 - Bedroom



Dimensions: 12'8" x 13'5"  
Area: 171 sq. ft  
Counted as living area: No

Heated: Yes  
Finished: No  
Enclosed: Yes  
Contiguous: Yes  
Permitted: Yes  
Wet space: No  
Addition: No  
Conversion: No

## 2 Floor 1 - Basement

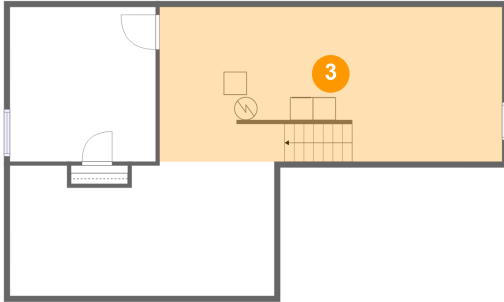


Dimensions: 23'0" x 11'8"  
Area: 254 sq. ft  
Counted as living area: No

Heated: Yes  
Finished: No  
Enclosed: Yes  
Contiguous: Yes  
Permitted: Yes  
Wet space: No  
Addition: No  
Conversion: No

**313 Persimmon Lane, Oswego, Kendall County,  
Illinois, United States, 60543**

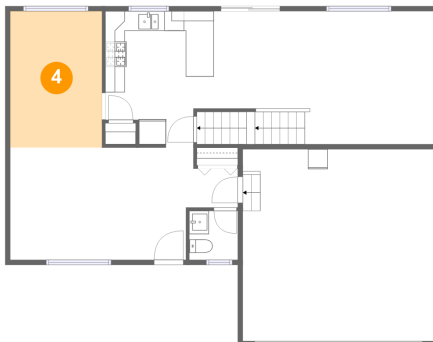
**3 Floor 1 - Utility**



Dimensions: 29'10" x 13'5"  
Area: 401 sq. ft  
Counted as living area: No

Heated: Yes  
Finished: No  
Enclosed: Yes  
Contiguous: Yes  
Permitted: Yes  
Wet space: No  
Addition: No  
Conversion: No

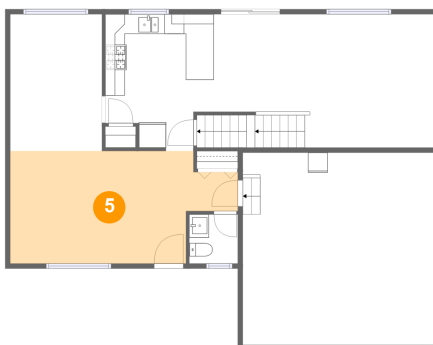
**4 Floor 2 - Dining Room**



Dimensions: 9'3" x 13'9"  
Area: 128 sq. ft  
Counted as living area: Yes

Heated: Yes  
Finished: Yes  
Enclosed: Yes  
Contiguous: Yes  
Permitted: Yes  
Wet space: No  
Addition: No  
Conversion: No

**5 Floor 2 - Living Room**

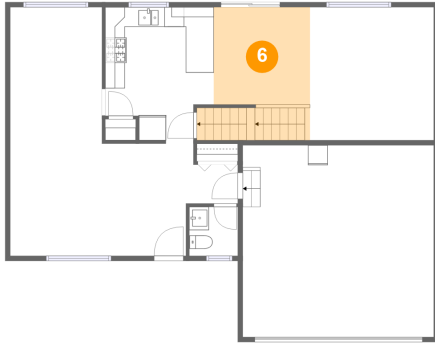


Dimensions: 23'0" x 11'4"  
Area: 224 sq. ft  
Counted as living area: Yes

Heated: Yes  
Finished: Yes  
Enclosed: Yes  
Contiguous: Yes  
Permitted: Yes  
Wet space: No  
Addition: No  
Conversion: No

# 313 Persimmon Lane, Oswego, Kendall County, Illinois, United States, 60543

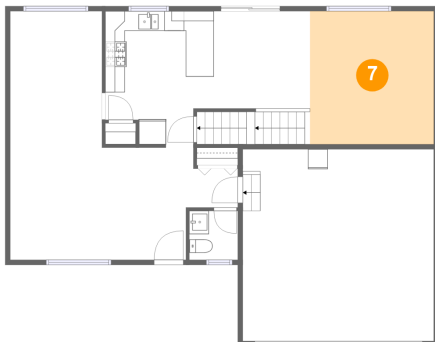
## 6 Floor 2 - Nook



Dimensions: 9'9" x 9'10"  
Area: 135 sq. ft  
Counted as living area: Yes

Heated: Yes  
Finished: Yes  
Enclosed: Yes  
Contiguous: Yes  
Permitted: Yes  
Wet space: No  
Addition: No  
Conversion: No

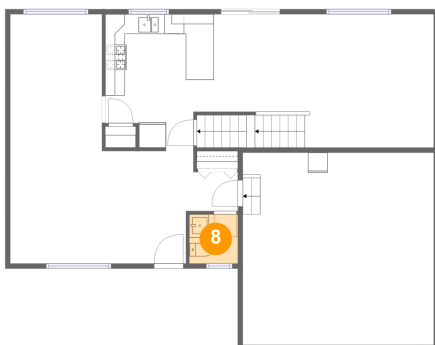
## 7 Floor 2 - Living Room



Dimensions: 12'6" x 13'5"  
Area: 168 sq. ft  
Counted as living area: Yes

Heated: Yes  
Finished: Yes  
Enclosed: Yes  
Contiguous: Yes  
Permitted: Yes  
Wet space: No  
Addition: No  
Conversion: No

## 8 Floor 2 - Bath

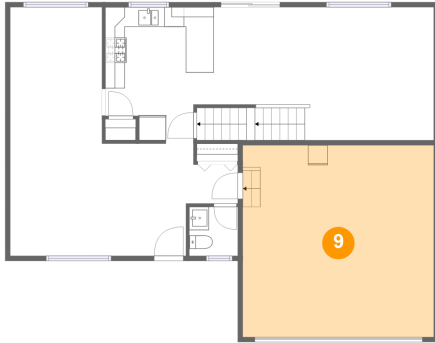


Dimensions: 4'11" x 4'11"  
Area: 24 sq. ft  
Counted as living area: Yes

Heated: Yes  
Finished: Yes  
Enclosed: Yes  
Contiguous: Yes  
Permitted: Yes  
Wet space: Yes  
Addition: No  
Conversion: No

**313 Persimmon Lane, Oswego, Kendall County,  
Illinois, United States, 60543**

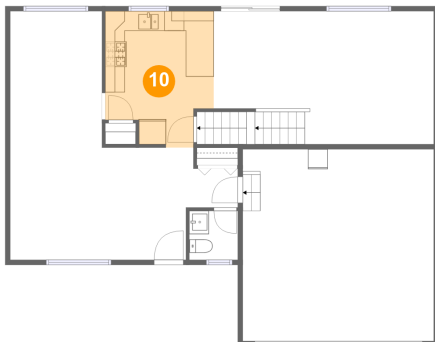
**9 Floor 2 - Garage**



Dimensions: 19'3" x 19'4"  
Area: 375 sq. ft  
Counted as living area: No

Heated: No  
Finished: No  
Enclosed: Yes  
Contiguous: Yes  
Permitted: Yes  
Wet space: No  
Addition: No  
Conversion: No

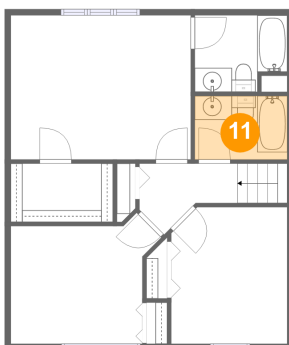
**10 Floor 2 - Kitchen**



Dimensions: 11'0" x 13'9"  
Area: 133 sq. ft  
Counted as living area: Yes

Heated: Yes  
Finished: Yes  
Enclosed: Yes  
Contiguous: Yes  
Permitted: Yes  
Wet space: No  
Addition: No  
Conversion: No

**11 Floor 3 - Bath**



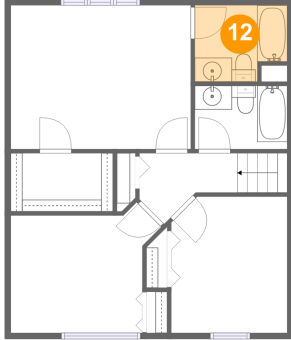
Dimensions: 7'8" x 5'3"  
Area: 41 sq. ft  
Counted as living area: Yes

Heated: Yes  
Finished: Yes  
Enclosed: Yes  
Contiguous: Yes  
Permitted: Yes  
Wet space: Yes  
Addition: No  
Conversion: No



**313 Persimmon Lane, Oswego, Kendall County,  
Illinois, United States, 60543**

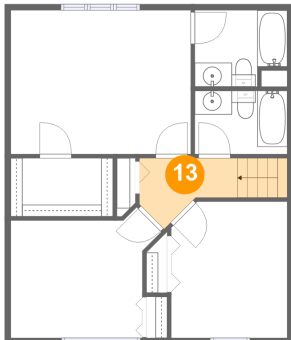
**12 Floor 3 - Bath**



Dimensions: 7'8" x 6'4"  
Area: 45 sq. ft  
Counted as living area: Yes

Heated: Yes  
Finished: Yes  
Enclosed: Yes  
Contiguous: Yes  
Permitted: Yes  
Wet space: Yes  
Addition: No  
Conversion: No

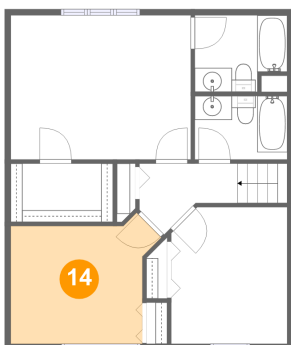
**13 Floor 3 - Hall**



Dimensions: 8'2" x 4'10"  
Area: 47 sq. ft  
Counted as living area: Yes

Heated: Yes  
Finished: Yes  
Enclosed: Yes  
Contiguous: Yes  
Permitted: Yes  
Wet space: No  
Addition: No  
Conversion: No

**14 Floor 3 - Bedroom**

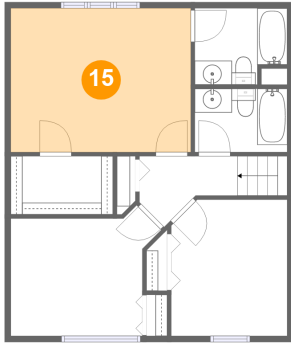


Dimensions: 11'0" x 9'9"  
Area: 111 sq. ft  
Counted as living area: Yes

Heated: Yes  
Finished: Yes  
Enclosed: Yes  
Contiguous: Yes  
Permitted: Yes  
Wet space: No  
Addition: No  
Conversion: No

**313 Persimmon Lane, Oswego, Kendall County,  
Illinois, United States, 60543**

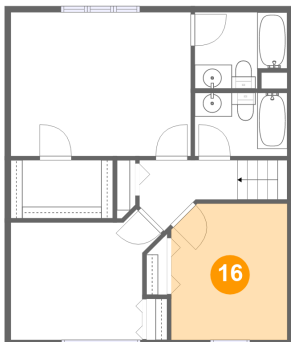
**15 Floor 3 - Bedroom**



Dimensions: 15'0" x 12'0"  
Area: 179 sq. ft  
Counted as living area: Yes

Heated: Yes  
Finished: Yes  
Enclosed: Yes  
Contiguous: Yes  
Permitted: Yes  
Wet space: No  
Addition: No  
Conversion: No

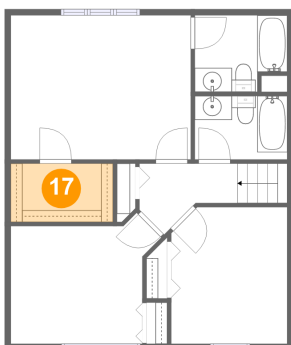
**16 Floor 3 - Bedroom**



Dimensions: 9'8" x 11'4"  
Area: 107 sq. ft  
Counted as living area: Yes

Heated: Yes  
Finished: Yes  
Enclosed: Yes  
Contiguous: Yes  
Permitted: Yes  
Wet space: No  
Addition: No  
Conversion: No

**17 Floor 3 - Cl**



Dimensions: 8'6" x 1'9"  
Area: 41 sq. ft  
Counted as living area: Yes

Heated: Yes  
Finished: Yes  
Enclosed: Yes  
Contiguous: Yes  
Permitted: Yes  
Wet space: No  
Addition: No  
Conversion: No