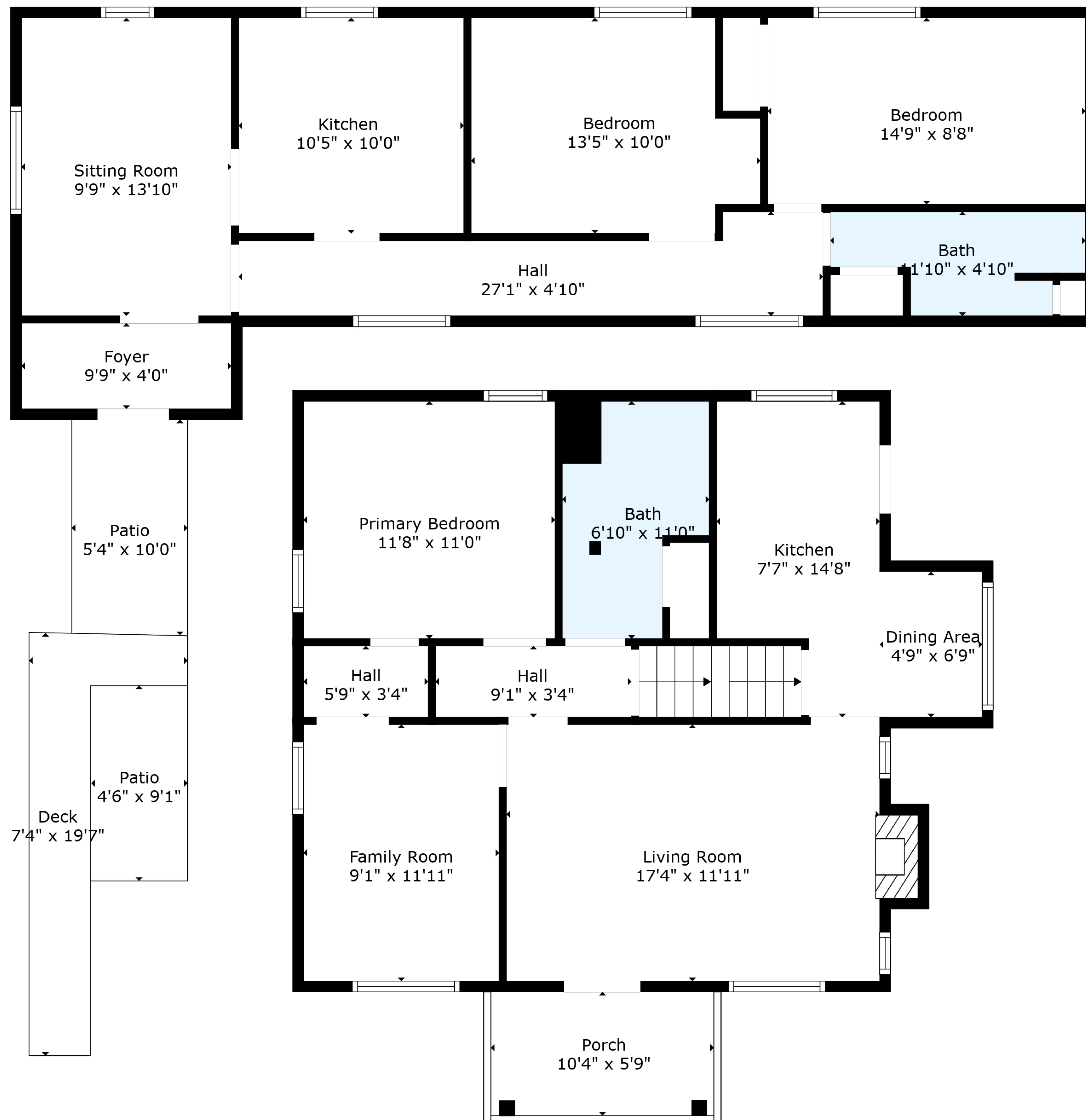


Basement  
26'9" x 17'2"

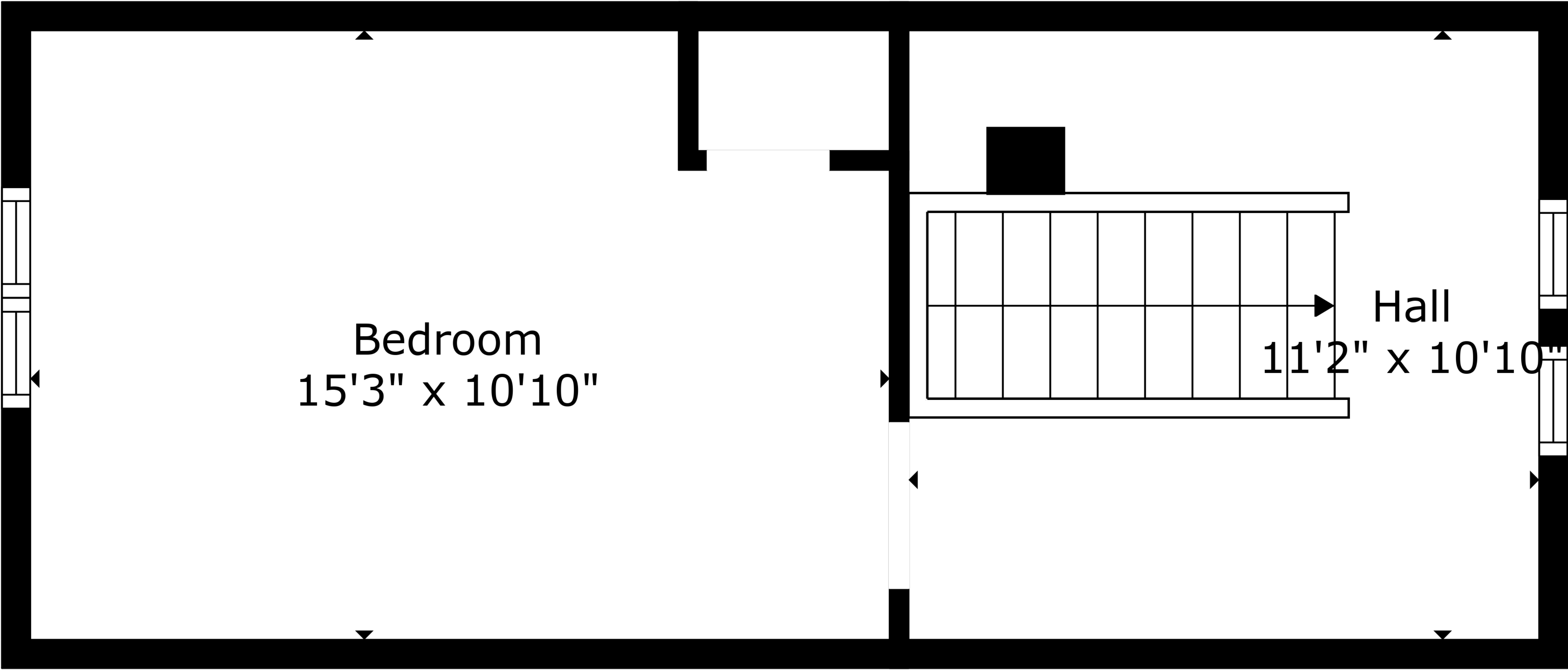
**TOTAL: 1729 sq. ft**

BELOW GROUND: 0 sq. ft, FLOOR 2: 1478 sq. ft, FLOOR 3: 251 sq. ft  
EXCLUDED AREAS: BASEMENT: 460 sq. ft, PORCH: 59 sq. ft, DECK: 67 sq. ft,  
PATIO: 95 sq. ft, FIREPLACE: 9 sq. ft, LOW CEILING: 38 sq. ft  
WALLS: 196 sq. ft

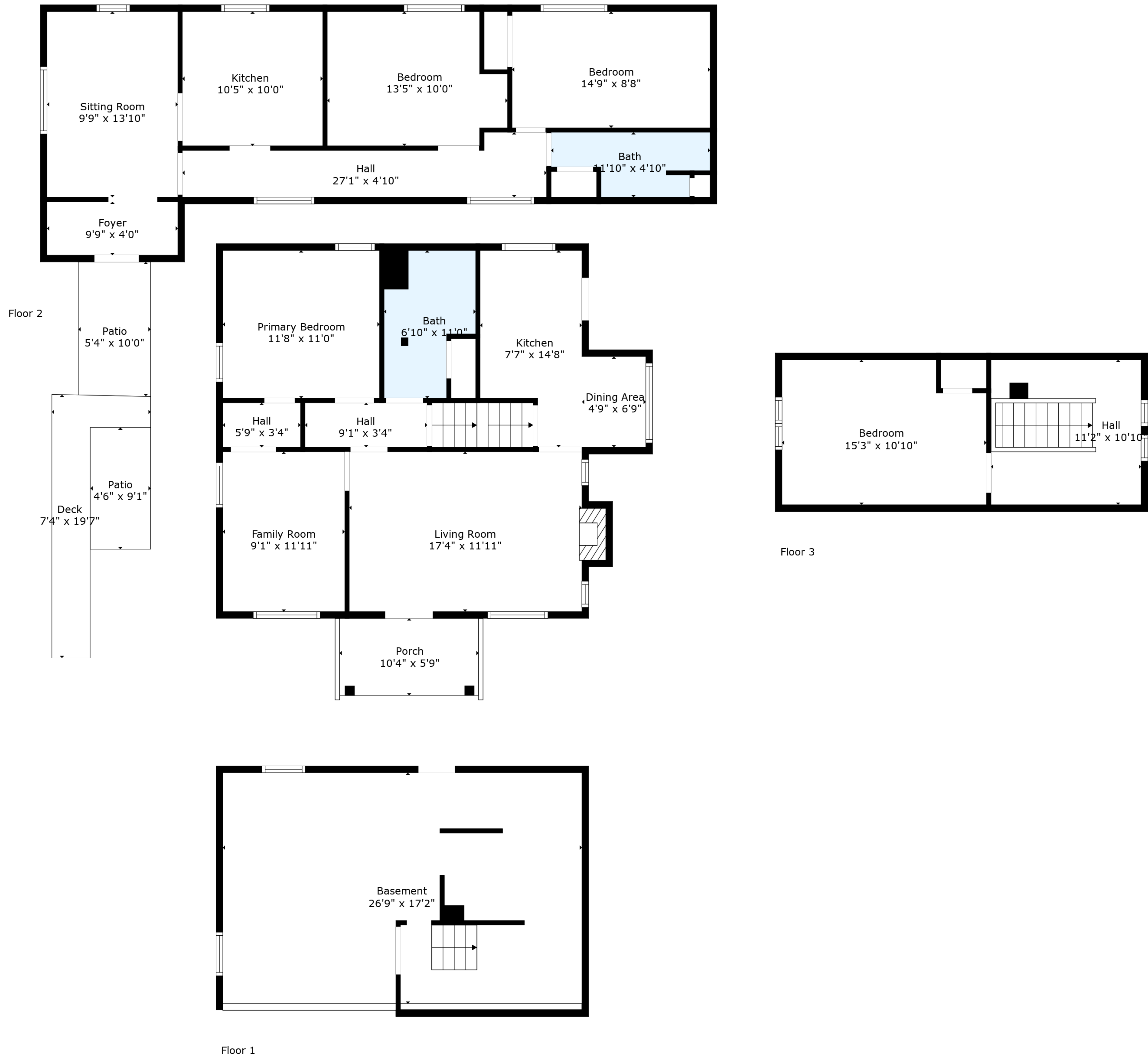


**TOTAL: 1729 sq. ft**

BELOW GROUND: 0 sq. ft, FLOOR 2: 1478 sq. ft, FLOOR 3: 251 sq. ft  
 EXCLUDED AREAS: BASEMENT: 460 sq. ft, PORCH: 59 sq. ft, DECK: 67 sq. ft,  
 PATIO: 95 sq. ft, FIREPLACE: 9 sq. ft, LOW CEILING: 38 sq. ft  
 WALLS: 196 sq. ft



**TOTAL: 1729 sq. ft**  
BELOW GROUND: 0 sq. ft, FLOOR 2: 1478 sq. ft, FLOOR 3: 251 sq. ft  
EXCLUDED AREAS: BASEMENT: 460 sq. ft, PORCH: 59 sq. ft, DECK: 67 sq. ft,  
PATIO: 95 sq. ft, FIREPLACE: 9 sq. ft, LOW CEILING: 38 sq. ft  
WALLS: 196 sq. ft



**TOTAL: 1729 sq. ft**  
BELOW GROUND: 0 sq. ft, FLOOR 2: 1478 sq. ft, FLOOR 3: 251 sq. ft  
EXCLUDED AREAS: BASEMENT: 460 sq. ft, PORCH: 59 sq. ft, DECK: 67 sq. ft,  
PATIO: 95 sq. ft, FIREPLACE: 9 sq. ft, LOW CEILING: 38 sq. ft  
WALLS: 196 sq. ft