

Home report

100 Bridgewater Pointe Place, Westlake Corner, Moneta,
Franklin County, Virginia, United States, 24121, 201





MAIN

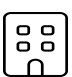
Property summary

 **0** Garages

 **4** Bedrooms

 **3** Bathrooms

 **0** Half baths

 **1** Floors

 **2,227** Gross living area sqft

 **2,507** Total sqft

Home report

100 Bridgewater Pointe Place, Westlake Corner, Moneta,
Franklin County, Virginia, United States, 24121, 201



Room dimensions

Floor 1 Total sqft: 2507 Living area: 2227

#		Dimensions	sqft	Counted as living area
1	Laundry	3'10" x 3'8"	14 sq. ft	Yes
2	W.I.C.	9'7" x 5'7"	54 sq. ft	Yes
3	Balcony	19'4" x 22'9"	280 sq. ft	No
4	Kitchen	8'4" x 13'0"	103 sq. ft	Yes
5	Bath	11'7" x 5'9"	66 sq. ft	Yes
6	WC	3'4" x 5'7"	16 sq. ft	Yes
7	Bedroom	14'1" x 10'9"	145 sq. ft	Yes
8	Bath	11'4" x 6'0"	68 sq. ft	Yes
9	Primary Bath	12'10" x 12'10"	126 sq. ft	Yes
10	Dining Area	12'10" x 9'8"	117 sq. ft	Yes
11	Foyer	6'0" x 10'8"	52 sq. ft	Yes

Home report

100 Bridgewater Pointe Place, Westlake Corner, Moneta,
Franklin County, Virginia, United States, 24121, 201

#		Dimensions	sqft	Counted as living area
12	Living Room	19'4" x 21'10"	384 sq. ft	Yes
13	Hall	6'2" x 18'3"	79 sq. ft	Yes
14	Bedroom	14'3" x 16'4"	201 sq. ft	Yes
15	Bedroom	14'1" x 14'2"	184 sq. ft	Yes
16	Primary Bedroom	22'4" x 14'0"	277 sq. ft	Yes
17	Hall	17'7" x 7'3"	86 sq. ft	Yes
18	Hall	9'8" x 4'4"	42 sq. ft	Yes

100 Bridgewater Pointe Place, Westlake Corner, Moneta,
Franklin County, Virginia, United States, 24121, 201

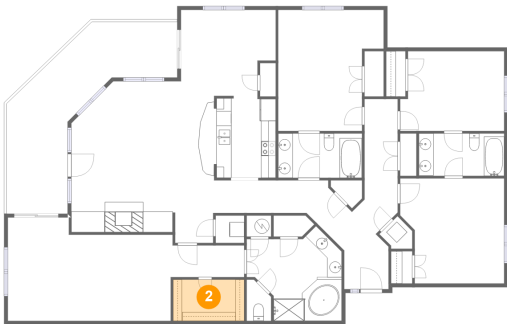
1 Floor 1 - Laundry



Dimensions: 3'10" x 3'8"
Area: 14 sq. ft
Counted as living area: Yes

Heated: Yes
Finished: Yes
Enclosed: Yes
Contiguous: Yes
Permitted: Yes
Wet space: No
Addition: No
Conversion: No

2 Floor 1 - W.I.C.



Dimensions: 9'7" x 5'7"
Area: 54 sq. ft
Counted as living area: Yes

Heated: Yes
Finished: Yes
Enclosed: Yes
Contiguous: Yes
Permitted: Yes
Wet space: No
Addition: No
Conversion: No

100 Bridgewater Pointe Place, Westlake Corner, Moneta,
Franklin County, Virginia, United States, 24121, 201

3 Floor 1 - Balcony



Dimensions: 19'4" x 22'9"
Area: 280 sq. ft
Counted as living area: No

Heated: No
Finished: Yes
Enclosed: No
Contiguous: Yes
Permitted: Yes
Wet space: No
Addition: No
Conversion: No

4 Floor 1 - Kitchen



Dimensions: 8'4" x 13'0"
Area: 103 sq. ft
Counted as living area: Yes

Heated: Yes
Finished: Yes
Enclosed: Yes
Contiguous: Yes
Permitted: Yes
Wet space: No
Addition: No
Conversion: No

5 Floor 1 - Bath



Dimensions: 11'7" x 5'9"
Area: 66 sq. ft
Counted as living area: Yes

Heated: Yes
Finished: Yes
Enclosed: Yes
Contiguous: Yes
Permitted: Yes
Wet space: Yes
Addition: No
Conversion: No

100 Bridgewater Pointe Place, Westlake Corner, Moneta,
Franklin County, Virginia, United States, 24121, 201

6 Floor 1 - WC



Dimensions: 3'4" x 5'7"
Area: 16 sq. ft
Counted as living area: Yes

Heated: Yes
Finished: Yes
Enclosed: Yes
Contiguous: Yes
Permitted: Yes
Wet space: Yes
Addition: No
Conversion: No

7 Floor 1 - Bedroom



Dimensions: 14'1" x 10'9"
Area: 145 sq. ft
Counted as living area: Yes

Heated: Yes
Finished: Yes
Enclosed: Yes
Contiguous: Yes
Permitted: Yes
Wet space: No
Addition: No
Conversion: No

8 Floor 1 - Bath

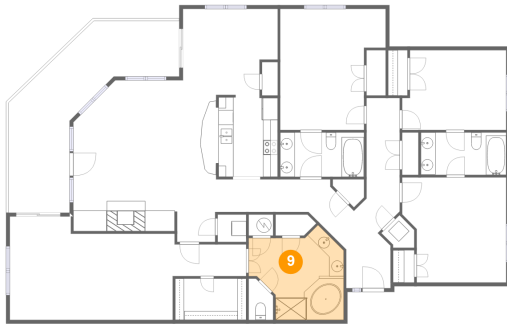


Dimensions: 11'4" x 6'0"
Area: 68 sq. ft
Counted as living area: Yes

Heated: Yes
Finished: Yes
Enclosed: Yes
Contiguous: Yes
Permitted: Yes
Wet space: Yes
Addition: No
Conversion: No

100 Bridgewater Pointe Place, Westlake Corner, Moneta,
Franklin County, Virginia, United States, 24121, 201

9 Floor 1 - Primary Bath



Dimensions: 12'10" x 12'10"
Area: 126 sq. ft
Counted as living area: Yes

Heated: Yes
Finished: Yes
Enclosed: Yes
Contiguous: Yes
Permitted: Yes
Wet space: Yes
Addition: No
Conversion: No

10 Floor 1 - Dining Area



Dimensions: 12'10" x 9'8"
Area: 117 sq. ft
Counted as living area: Yes

Heated: Yes
Finished: Yes
Enclosed: Yes
Contiguous: Yes
Permitted: Yes
Wet space: No
Addition: No
Conversion: No

11 Floor 1 - Foyer

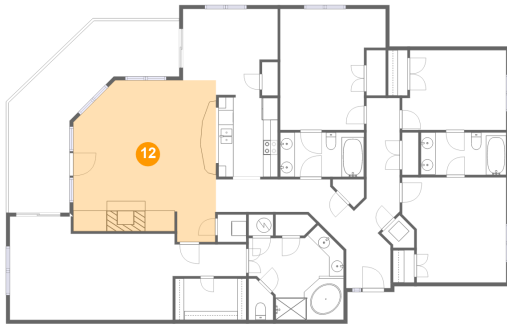


Dimensions: 6'0" x 10'8"
Area: 52 sq. ft
Counted as living area: Yes

Heated: Yes
Finished: Yes
Enclosed: Yes
Contiguous: Yes
Permitted: Yes
Wet space: No
Addition: No
Conversion: No

100 Bridgewater Pointe Place, Westlake Corner, Moneta,
Franklin County, Virginia, United States, 24121, 201

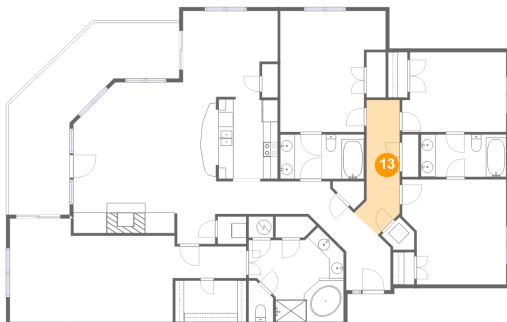
12 Floor 1 - Living Room



Dimensions: 19'4" x 21'10"
Area: 384 sq. ft
Counted as living area: Yes

Heated: Yes
Finished: Yes
Enclosed: Yes
Contiguous: Yes
Permitted: Yes
Wet space: No
Addition: No
Conversion: No

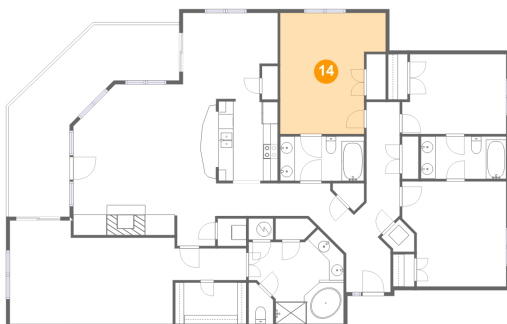
13 Floor 1 - Hall



Dimensions: 6'2" x 18'3"
Area: 79 sq. ft
Counted as living area: Yes

Heated: Yes
Finished: Yes
Enclosed: Yes
Contiguous: Yes
Permitted: Yes
Wet space: No
Addition: No
Conversion: No

14 Floor 1 - Bedroom



Dimensions: 14'3" x 16'4"
Area: 201 sq. ft
Counted as living area: Yes

Heated: Yes
Finished: Yes
Enclosed: Yes
Contiguous: Yes
Permitted: Yes
Wet space: No
Addition: No
Conversion: No

100 Bridgewater Pointe Place, Westlake Corner, Moneta,
Franklin County, Virginia, United States, 24121, 201

15 Floor 1 - Bedroom



Dimensions: 14'1" x 14'2"
Area: 184 sq. ft
Counted as living area: Yes

Heated: Yes
Finished: Yes
Enclosed: Yes
Contiguous: Yes
Permitted: Yes
Wet space: No
Addition: No
Conversion: No

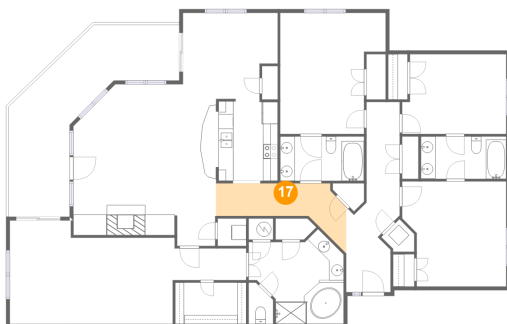
16 Floor 1 - Primary Bedroom



Dimensions: 22'4" x 14'0"
Area: 277 sq. ft
Counted as living area: Yes

Heated: Yes
Finished: Yes
Enclosed: Yes
Contiguous: Yes
Permitted: Yes
Wet space: No
Addition: No
Conversion: No

17 Floor 1 - Hall

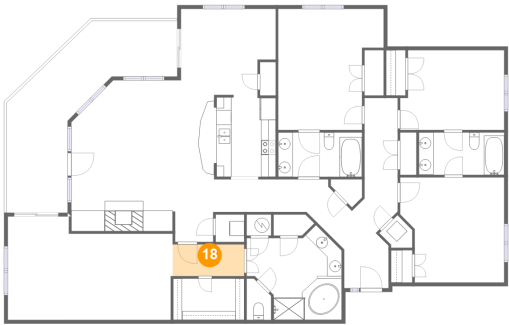


Dimensions: 17'7" x 7'3"
Area: 86 sq. ft
Counted as living area: Yes

Heated: Yes
Finished: Yes
Enclosed: Yes
Contiguous: Yes
Permitted: Yes
Wet space: No
Addition: No
Conversion: No

100 Bridgewater Pointe Place, Westlake Corner, Moneta,
Franklin County, Virginia, United States, 24121, 201

18 Floor 1 - Hall



Dimensions: 9'8" x 4'4"
Area: 42 sq. ft
Counted as living area: Yes

Heated: Yes
Finished: Yes
Enclosed: Yes
Contiguous: Yes
Permitted: Yes
Wet space: No
Addition: No
Conversion: No