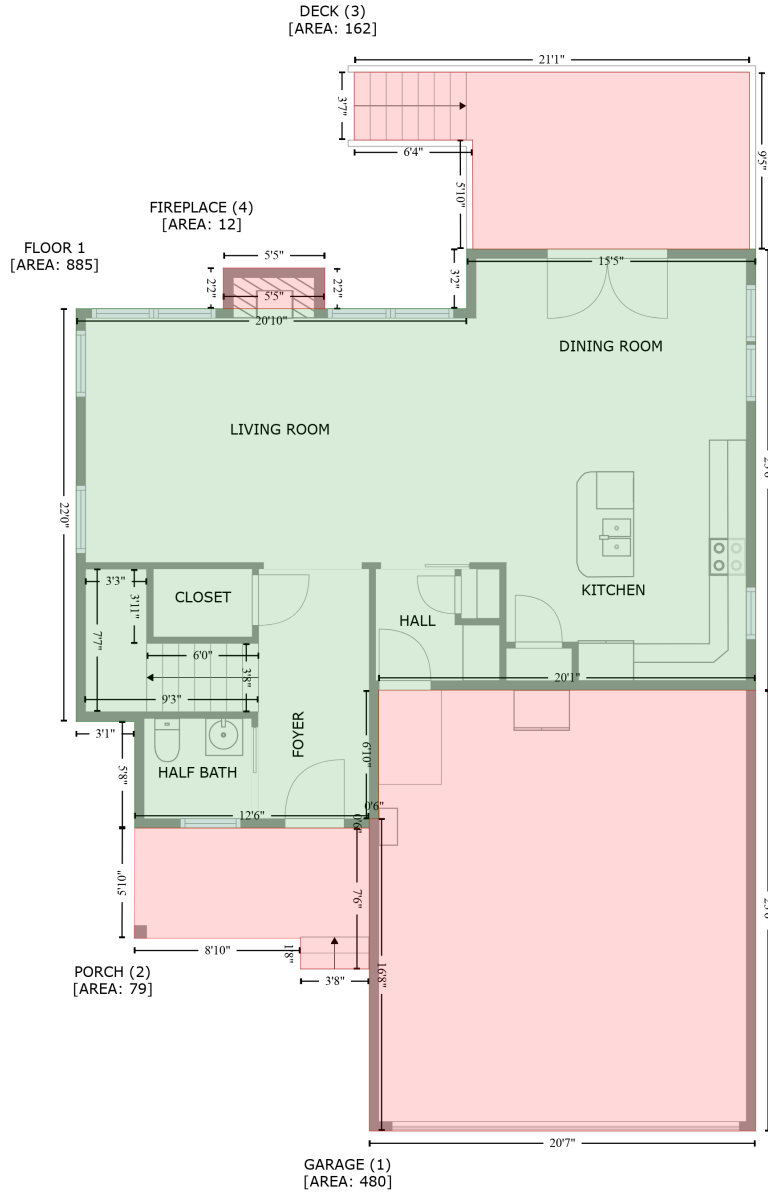


512 Wheddoncross Way, Wake Forest, Wake County, North Carolina, United States, 27587

Gross Living Area: 1970 sq. ft



Space	Area (sq. ft)	Calculation
FLOOR 1 (Living area)	885	$-\left((547.2 + 547.2) * (34.6 - 316.6) + (547.2 + 306.1) * (316.6 - 316.6) + (306.1 + 306.1) * (316.6 - 398.8) + (306.1 + 300.1) * (398.8 - 398.8) + (300.1 + 300.1) * (398.8 - 404.8) + (300.1 + 150.1) * (404.8 - 404.8) + (150.1 + 150.1) * (404.8 - 336.7) + (150.1 + 112.7) * (336.7 - 336.7) + (112.7 + 112.7) * (336.7 - 72.7) + (112.7 + 362.3) * (72.7 - 72.7) + (362.3 + 362.3) * (72.7 - 34.6) + (362.3 + 547.2) * (34.6 - 34.6)\right) * 0.5 * 0.00694$
GARAGE	480	$-\left((547.2 + 547.2) * (316.6 - 598.5) + (547.2 + 300.1) * (598.5 - 598.5) + (300.1 + 300.1) * (598.5 - 598.5)\right) * 0.5 * 0.00694$

512 Wheddoncross Way, Wake Forest, Wake County, North Carolina, United States, 27587

Gross Living Area: 1970 sq. ft

Space	Area (sq. ft)	Calculation <small>Coordinate Polygon Area Algorithm using inches</small>
(Non-living area)		$398.8 + (300.1 + 306.1) * (398.8 - 398.8) + (306.1 + 306.1) * (398.8 - 316.6) + (306.1 + 547.2) * (316.6 - 316.6) * 0.5 * 0.00694$
PORCH (Non-living area)	79	$-((300.1 + 300.1) * (404.8 - 494.9) + (300.1 + 256.2) * (494.9 - 494.9) + (256.2 + 256.2) * (494.9 - 475.2) + (256.2 + 149.9) * (475.2 - 475.2) + (149.9 + 150.1) * (475.2 - 404.8) + (150.1 + 300.1) * (404.8 - 404.8)) * 0.5 * 0.00694$
DECK (Non-living area)	162	$-((543.2 + 543.2) * (-78.6 - 34.6) + (543.2 + 366.3) * (34.6 - 34.5) + (366.3 + 366.2) * (34.5 - -35.1) + (366.2 + 290.6) * (-35.1 - -35.1) + (290.6 + 290.6) * (-35.1 - -78.6) + (290.6 + 543.2) * (-78.6 - -78.6)) * 0.5 * 0.00694$
FIREPLACE (Non-living area)	12	$-((271.7 + 271.7) * (46.6 - 72.7) + (271.7 + 206.8) * (72.7 - 72.7) + (206.8 + 206.8) * (72.7 - 46.6) + (206.8 + 271.7) * (46.6 - 46.6)) * 0.5 * 0.00694$

512 Wheddoncross Way, Wake Forest, Wake County, North Carolina, United States, 27587

Gross Living Area: 1970 sq. ft

FLOOR 2
[AREA: 1085]



Space	Area (sq. ft)	Calculation <small>Coordinate Polygon Area Algorithm using inches</small>
FLOOR 2 (Living area)	1085	$-((547.2 + 547.2) * (72.7 - 362.3) + (547.2 + 477.6) * (362.3 - 362.3) + (477.6 + 477.6) * (362.3 - 503.3) + (477.6 + 300.1) * (503.3 - 503.3) + (300.1 + 300.1) * (503.3 - 404.8) + (300.1 + 150.1) * (404.8 - 404.8) + (150.1 + 150.1) * (404.8 - 336.7) + (150.1 + 112.7) * (336.7 - 336.7) + (112.7 + 112.7) * (336.7 - 72.7) + (112.7 + 547.2) * (72.7 - 72.7)) * 0.5 * 0.00694$